



Investor Presentation

www.AnalytixInsight.com

ALY:TSX-V

June 2023

Forward-looking statements

Statements about the AnalytixInsight Inc.'s (the "Company" or "ALY") future expectations and all other statements in this presentation other than historical facts, are "forward-looking statements" within the meaning of applicable Canadian securities legislation, Section 27A of the Securities Act of 1933, Section 21E of the Securities Exchange Act of 1934, and as that term is defined in the Private Securities Litigation Reform Act of 1995. The Company intends that such forward-looking statements be subject to the safe harbors created thereby. The information in this document contains information relating to the Company that is based on the beliefs of the Company and/or its management, as well as assumptions made by any information currently available to the Company or its management. When used in this document, the words "anticipate," "estimate," "expect," "intend," "plans," "projects," and similar expressions, as they relate to the Company or its management, are intended to identify forward-looking statements. Such statements reflect the current view of the Company regarding future events and are subject to certain risks, uncertainties and assumptions, including the risks and uncertainties noted. Should one or more of these risks or uncertainties materialize, or should underlying assumptions prove to be incorrect, actual results may vary materially from those described herein as anticipated, believed, estimated, expected, intended or projected. In each instance, forward-looking information should be considered in light of the accompanying meaningful cautionary statements herein. Factors that could cause results to differ include, but are not limited to, successful performance of internal plans, the impact of competitive services and pricing and general economic risks and uncertainties. The Company does not undertake to update any forward-looking information, except in accordance with applicable securities laws. Unless required to be updated pursuant to securities laws, these statements speak only as of the date of this presentation.

AI-Driven Strategic Initiatives



CapitalCube

Financial Analytics

Fundamental financial analytics platform covering 50,000 stocks. Robo-advisor and ETF analysis.



MarketWall

Fintech Solutions

European online financial broker. Developer of financial trading and research solutions.



Euclides Technologies

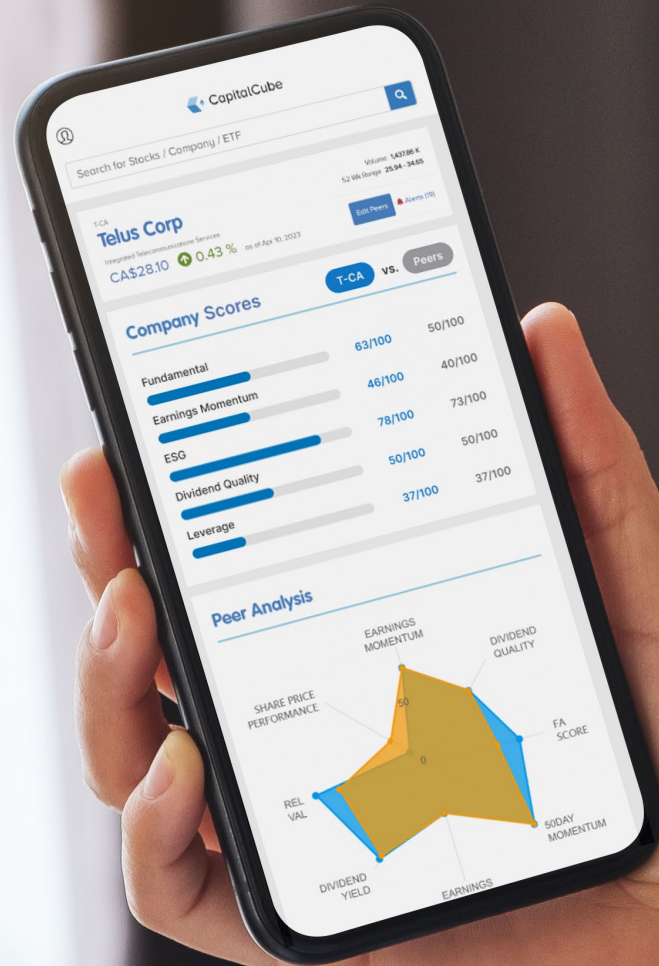
Workforce Optimization

Solutions for the mobile field service industry. Integrating and implementing enterprise software.



Financial Analytics 50,000 Stocks & ETFs Artificial Intelligence

*Transforming data into insightful
financial content for individuals and
world-leading institutions*



Artificial Intelligence for Investors

Capable of 100 billion daily computations, CapitalCube transforms raw financial data into insightful narratives on 50,000 global stocks & North American ETFs for institutions and individuals around the world.



Machine-created reports

On-demand reports for 50,000 stocks worldwide using AI and natural language generation.



Peer-based analysis

Analyzing companies against their industry peers - across borders and currencies.



Worldwide stocks



AI-driven insights



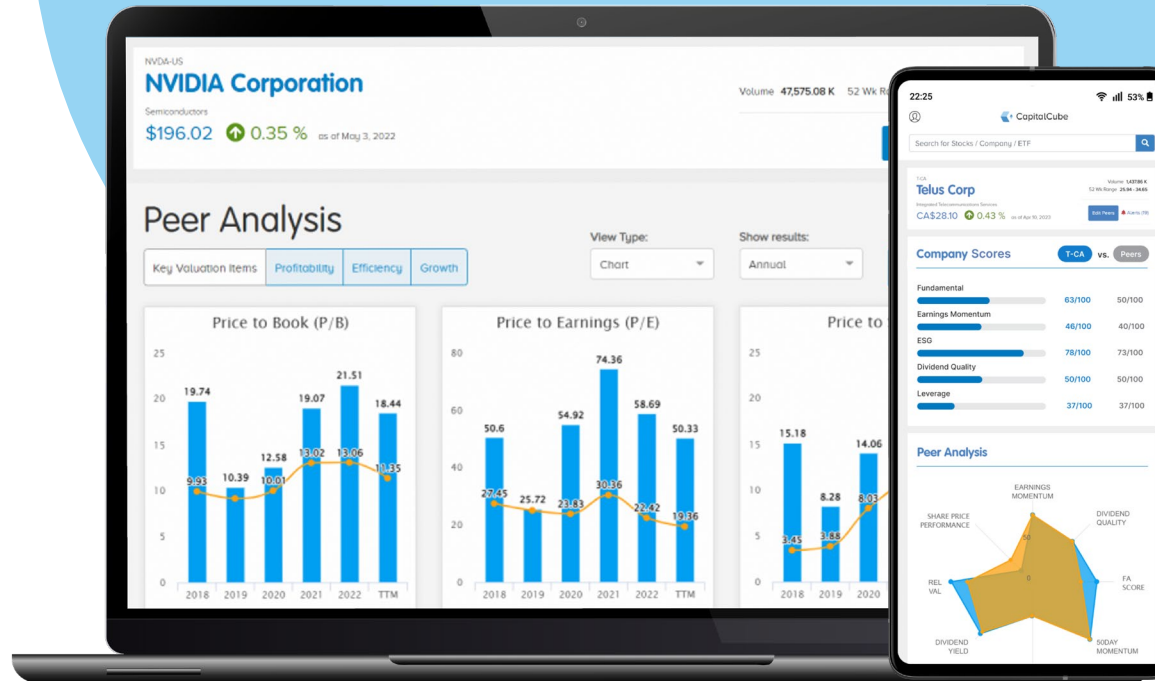
Proprietary scoring

Unique scores to evaluate the strength and performance of companies against their peers.



Stock & ETF screeners

200+ different fundamental and technical criteria points to allow for granular, in-depth screening.



CapitalCube Advanced Tools

Transforming raw financial data into actionable insights, CapitalCube is equipped with powerful tools enabled by AI & Machine Learning.



Unstructured data insights

Data from Twitter, Reddit, news releases, and news articles, analyzing sentiment, social media 'hype' indicators, and controversy risk.



ETF analysis

Insights on performance, holdings, sector and asset allocation, and comparison analysis against peer groups.



Robo-advisor

Robo-analysis of stocks and North American ETFs, automatic rebalancing to maintain desired risk profile, and benchmarking.

Refinitiv Partnership

AI-Driven Research Distribution Agreement

+85,000 AI-driven CapitalCube reports have been published to Refinitiv terminals on company earnings, dividend quality, and pre-revenue company analysis.

Refinitiv

An LSEG Business

One of the world's largest providers of financial markets data and infrastructure.

190

Countries

\$6.25 billion in revenue, +40,000 customers, and 400,000 end users across 190 countries.

REFINITIV



18.68

A

B

4.03

5

D

23.92

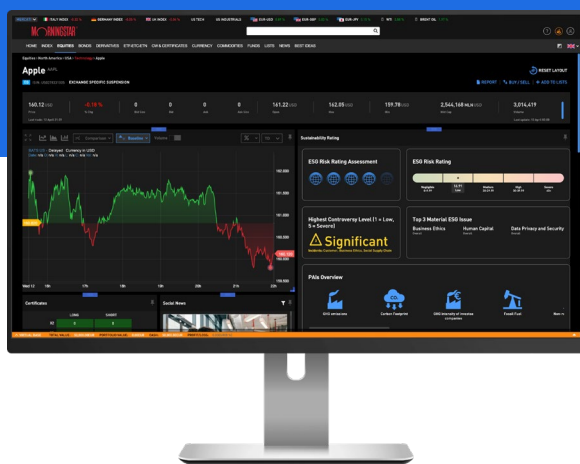




Fintech trading & research solutions

Developer of AI-assisted fintech solutions for individuals, banks, and brokers.

MarketWall's Fintech Product Solutions



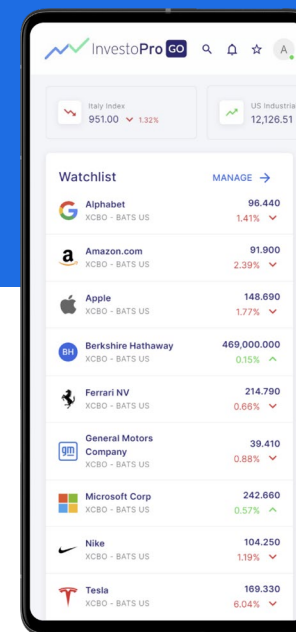
GEMINA

White-label enterprise trading and research platform to support digital transformation.



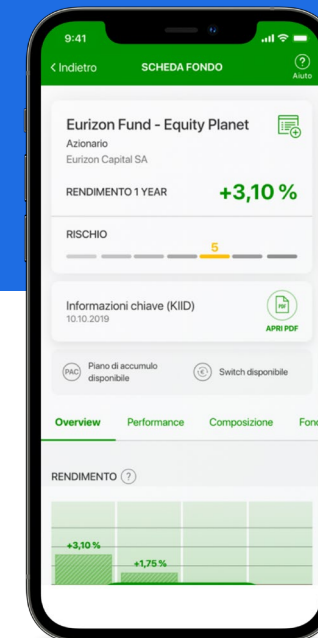
InvestoPro

Multi-device trading platform combining AI-driven analysis and scoring, technical analysis, financial education, and news.



InvestoPro GO

Simple and fast discount trading app with ultra user-friendly interface and real-time quotes.



Investo

Bank-scale trading app with financial analysis, market news, portfolios, and trading.

GEMINA – Fintech Research Platform

Designed to support the digital transformation of Banks, Brokers, and Institutions, to allow customers to achieve cost savings and faster time-to-market with easy integrations.

White-label AI-Assisted Trading Platform

GEMINA is an AI-assisted multi-device trading platform rich in fundamental analysis, in-house editorial content, third party research, and more.



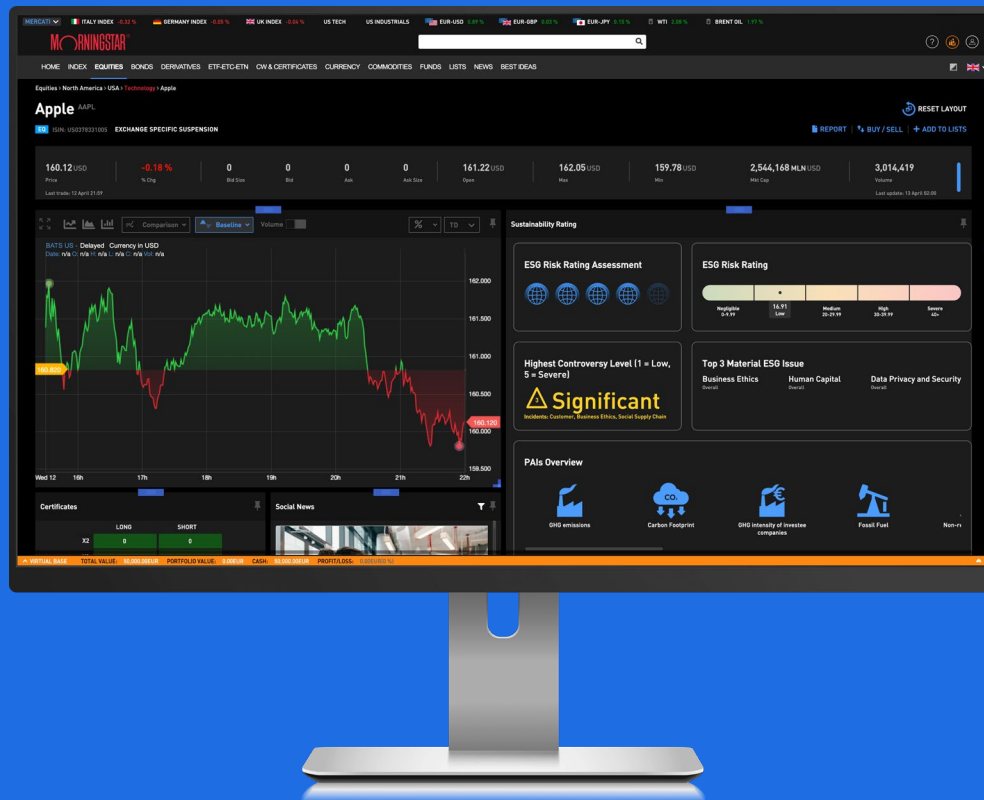
Cloud-enabled platform

Offered as cloud service (Microsoft Azure) or on-premise.



Institutional customers

Implemented by leading European financial institutions.



Morningstar Partnership

Morningstar Global Market: GEMINA-Based Offering

Morningstar launched Morningstar Global Market, an innovative enterprise research and market data platform targeted for institutional users,

- Enabling cost savings and faster time-to-market with easy integrations,
- Marketed and sold by Morningstar,
- Available in EMEA.

Progressive

Web app

Web-based for easy integrations, and major cost reductions compared to industry alternatives

29

Countries

Global investment research and financial services firm with \$1.87 billion in revenue.



InvestoPro – European Online Financial Broker

Licensed and launched in Italy in partnership with Intesa Sanpaolo.

A multi-device trading platform that combines AI-driven analysis reports and scoring, technical analysis, financial education, news, and more.



Retail trading tools

€9-12/trade and €20/month for full access to InvestoPro premium trading and research content.



Financial tools & content

Financial markets editorials, Morningstar financial research, education tools, and virtual trading.



Marketed to Intesa Sanpaolo customers

Built in collaboration with Intesa Sanpaolo, InvestoPro is offered to the bank's clients at discount pricing.



InvestoPro GO – Discount Trading

A purposely designed version of InvestoPro for mobile users to provide an ultra user-friendly interface and real-time quotes for on-the-go retail traders looking for an easy stock trading solution.



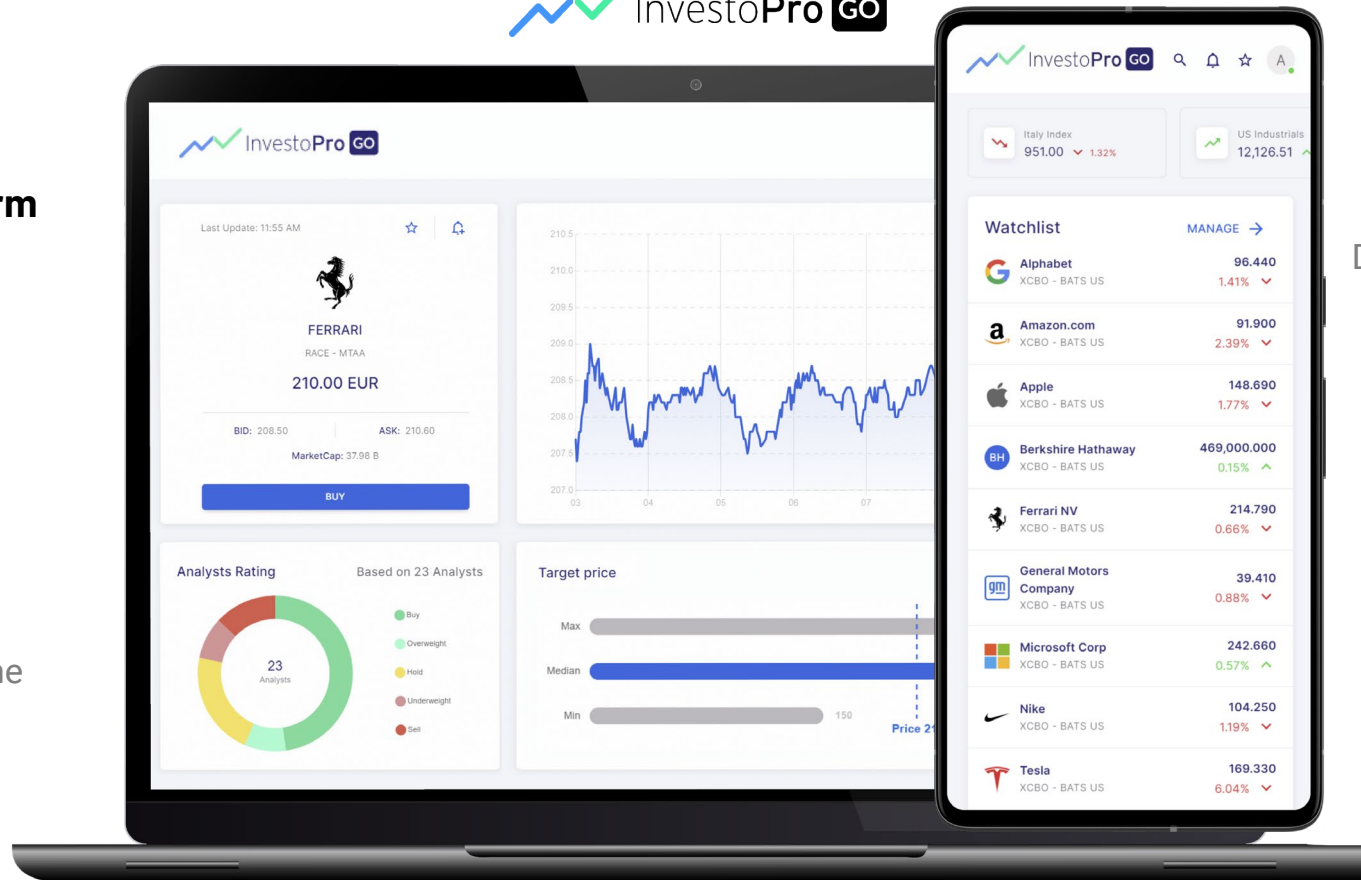
Discount trading platform

€3.90-9.90 trading fees.
No monthly fees.



Mobile app

Trade anywhere and anytime
with our website or app.



Samsung Partner

Developed to support mobile
partnership with Samsung.



Real-time quotes

Equities, ETF, and
Certificates trading.

Samsung Electronics Partner



InvestoPro & Samsung Italia

As a Samsung Electronics partner, InvestoPro financial apps are preloaded on certain Samsung devices in Europe.



Samsung Quick Access

InvestoPro GO is a Quick Access link on the start page of the Samsung Internet Browser.

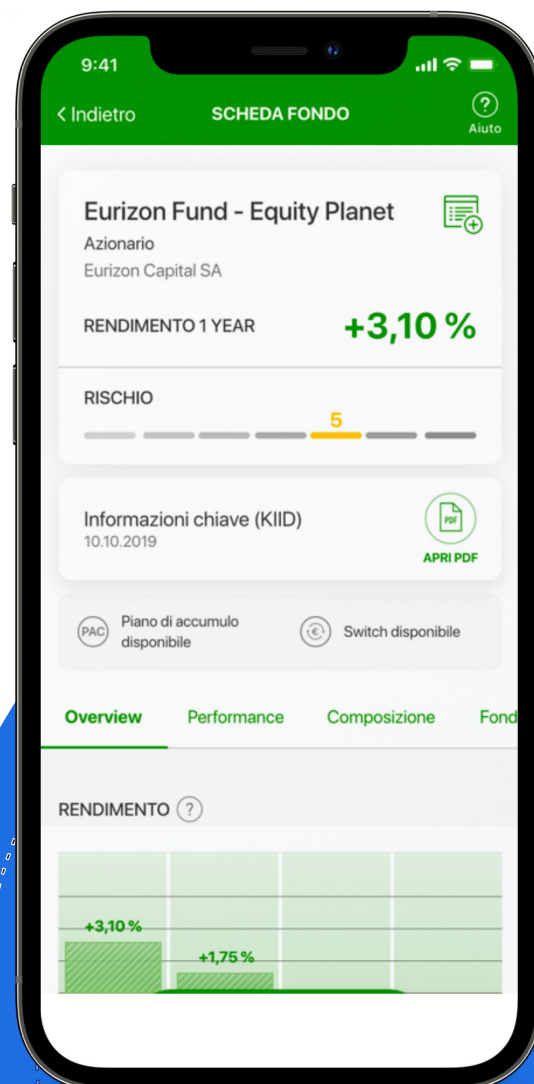


Samsung Recommended App

InvestoPro to be recommended to users as an exclusive digital trading app as part of its App Installer.



Investo – The Intesa Sanpaolo Trading App



9:41

Search

WATCHLIST

RACE-IT	516.11	1.12	+0.09%
F-US	421.51	2.34	+0.45%
GM-US	222.14	0.93	-0.03%
RNO-FR	763.13	3.45	+0.10%
SCT-PT	112.45	1.45	-1.03%
MBG-DE	433.11	6.77	-0.01%
VOW-DE	31,452	0.01	+0.11%

INVESTO

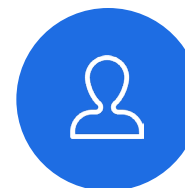
APPL-US
Max 166.02 Min 165.12 -0.86%

RACE-IT



Developed by MarketWall

Launched in 2018, Investo is licensed to Intesa Sanpaolo for €4M/year.



~1 million users

Investo accounts for about 54% of the bank's retail trading order flow.



Trading & research

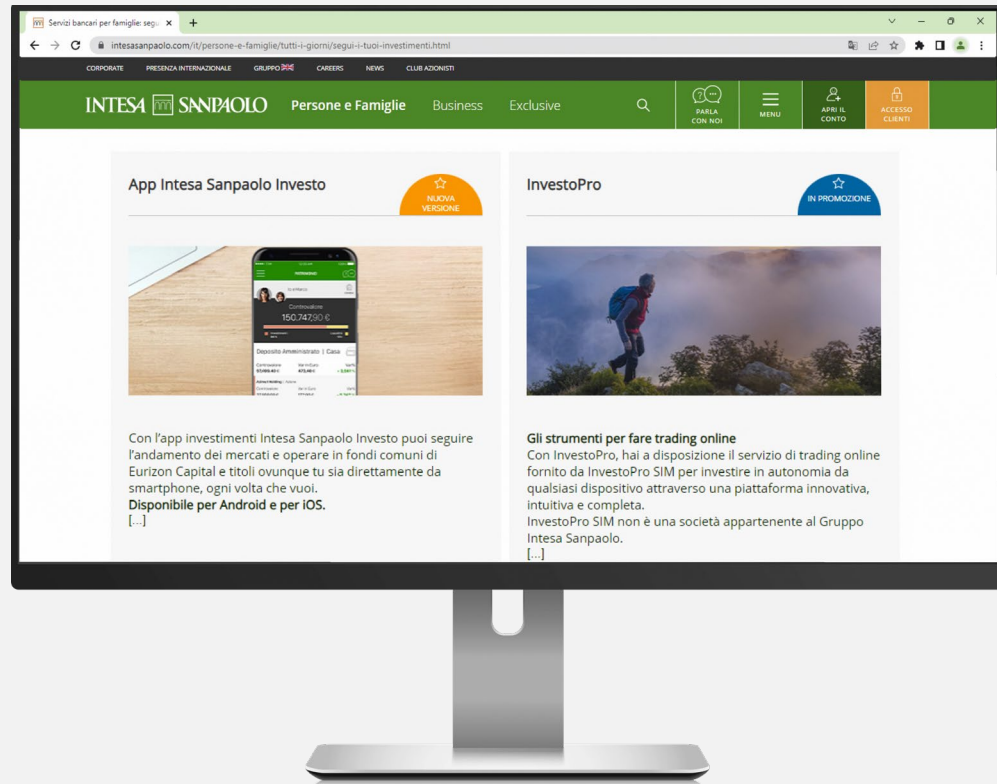
Easy-to-use app with financial analysis, market trends, push notifications, and more.



App Constellation

Investo is integrated into Intesa Sanpaolo's Banking 'App Constellation,' with 8.5M users.

Intesa Sanpaolo Partnership



Joint venture partner: INTESA  SANPAOLO
Italy's digital bank

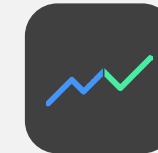
Intesa Sanpaolo, with +22M customers in 40 countries, is a 33% shareholder in MarketWall.

***Investo** and **InvestoPro** stock trading applications, both developed by MarketWall, are marketed to Intesa Sanpaolo's retail customers.*



Investo App

- Developed by MarketWall
- Launched in 2018
- Trading app licensed by Intesa Sanpaolo
- ~1 million active users
- 54% of retail trading volume



InvestoPro

- Developed by MarketWall
- Launched in 2021
- AI-assisted, multi-device trading platform available to Intesa Sanpaolo customers
- Morningstar portfolio tools

North American Trading & Research Platform

AnalytixInsight is developing a stock trading and research platform for North American users, banks, and brokers that will integrate the attributes of CapitalCube, InvestoPro, and GEMINA.



White-label solution

Banks and brokers can license and deploy solution under their own brand.



Advanced tools

AI-driven financial analysis and scoring, portfolio analysis, and robo-advisory.



Investor Education

Virtual trading tools, real-time news, education resources.



AI solutions for the mobile field service industry

*Systems integration and
implementation specialist for the
Field Service Management industry.*



Euclides Technologies

Workforce Optimization: Systems implementors & integrators

Solutions for global enterprises to maximize efficiency, increase revenue, reduce costs, and improve customer satisfaction.

Specializing in the Energy, Utilities, Telcom, and Oil & Gas industries with worldwide customers representing +100,000 field service personnel.



IFS Partner

Euclides is an IFS Channel Partner, selling and implementing Field Service Management and Planning and Scheduling Optimization software.



Zinier Partner

Leveraging Zinier's field service automation platform together with Euclides' expertise in data science and workforce optimization.



Capital Structure & Financial Information



AnalytixInsight ALY.V

Market cap: ~25M

Shares O/S: 97.2M

Options: 4M (\$0.31 - \$0.75)

Warrants: 7.6M (\$0.70 - \$0.90)

(6.6M are traded TSX-V:ALY.WT)



AnalytixInsight Financials

YE 2022 Revenue: \$1.7M

Q1 2023 Revenue: \$0.2M



MarketWall Financials

YE 2022 Revenue: \$6.1M

Q1 2023 Revenue: \$2.7M

(49%-owned, NOT consolidated in
AnalytixInsight financial statements)

TEAM MEMBERS



Prakash Hariharan

Chairman and CEO

Former portfolio manager at Front Street Capital. Financial Engineering degree, York University, BSc in Chemical Engineering. MBA from the Schulich School of Business.



Chaith Kondragunta

Managing Director

Co-founder AnalytixInsight, previously CEO. Current CEO of Aira Matrix.



Adi Hod

COO, Euclides Technologies

Co-founder of Euclides Technologies. Former member of ClickSoftware Professional Services team.



Natalie Hirsch, CPA

Chief Operating Officer

Former VP, Operations at Coinsquare. She holds a BASc and MMPA from the University of Toronto, and MBA from Tel Aviv University.



Scott Urquhart

VP, Corporate Development

Former investment banker at a Canadian-based investment banking & securities brokerage firm.



Marco Roscio Ricon

CEO, MarketWall

Former head of desktop and internet applications at London Stock Exchange.

AnalytixInsight Inc.



Prakash Hariharan, CEO

Prakash.Hariharan@AnalytixInsight.com



Contact

ir@analytixinsight.com
www.AnalytixInsight.com



**TSX Venture
Exchange**

ALY