



DEMOUNTABLE
CONCEPTS

• AMERICA'S SWAP BODY •

Single Air-Swap System Quick Guide



Demountable Concepts, Inc.

(844) 364-4021

demount.com

Statement of Compliance

Cargo Containment System:

The cargo containment system installed upon this truck chassis when properly maintained in good working and operating order, complies with the North American Cargo Securement Standard, which is codified in the following sections of the U.S. Department of Transportation, Federal Motor Carrier Safety Administration Part 393- Parts and Accessories Necessary for Safe Operation, Subpart I - Protection Against Shifting and Falling Cargo (May 2015), §§ 393.100, 393.102, 393.104, 393.106, 393.114. In addition, this system complies with Part 1 and 2 of the North American Cargo Securement Standard.

The cargo containment system also complies with Canadian National Safety Code for Motor Carriers NSC Standard 10 for Cargo Securement, Divisions 2, 3, 4, 5 (June 2013)

Lighting System:

The lighting system installed upon this truck chassis when properly maintained in good working and operating order, complies with Federal Motor Vehicle Safety Standard (FMVSS) 108, Lamps, Reflective Devices, and Associated Equipment, and the certification labeling requirements in the Code of Federal Regulations (CFR) Part 567, established by the National Highway Traffic Safety Administration (NHTSA)

This vehicle is certified as a Final Stage vehicle and complies with all FMVSS regulations in effect on the date of final manufacture.

Special Note to Enforcement Officer:

This vehicle is a swap body system. The container or box is the cargo or payload and is demountable from the truck for loading and unloading purposes. This vehicle complies with all cargo securement and vehicle lighting standards as noted above.

For additional information please visit: www.demount.com/compliance



Cargo Compliance Info.



Lighting Compliance Info.

Demountable Containers, standard truck bodies equipped with legs so they can be swapped between trucks and be loaded without the truck present.



Straight Trucks, with a lifting and locking system installed on their chassis for mounting, demounting, and transporting containers.

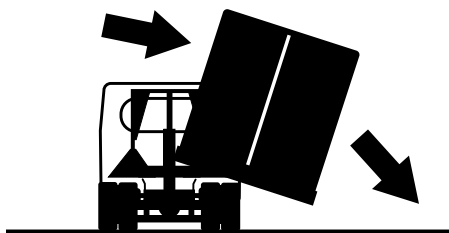


Yard Hostler Cab-Chassis with a lifting system for mounting, demounting, locking, and transporting containers in yard with legs deployed.





WARNINGS!



- **Safely operate this equipment at all times.**
- An improperly secured container that falls off a truck could result in serious injury or death.



- Drivers are responsible for making sure the container is properly secured to the truck before moving.



- All individuals who operate this vehicle must have sufficient training to operate this type of vehicle and should have a valid driver's license. This manual is not intended to be a training guide for your operation. It is the operator's responsibility to obtain sufficient training in order to operate this vehicle safely. **DO NOT** attempt to operate this vehicle without adequate training. Operating this vehicle without adequate training could result in serious injury or death.



- **DO NOT** tamper with the lock warning system.



- Be sure all people are clear of the container when mounting and demounting.



- To avoid injury **ALWAYS** USE HANDLES to operate legs and **NEVER** put fingers into holes in legs.



- Read and understand all safety labels on the equipment.



- Failure to check that chassis is centered and straight when backing under or pulling out is the primary cause of damage.



- Do not pull out from standing container before checking that all the legs are set.



- NEVER attempt to raise or lower the lift system while the vehicle is in motion.



When demounting bodies:

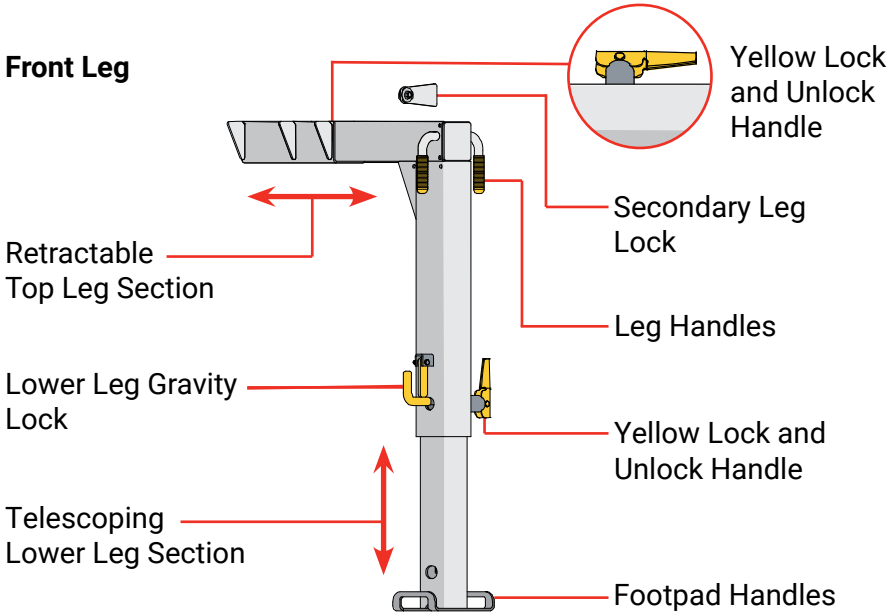
- All legs must be deployed and in proper position with yellow spring lock engaged.
- Bodies must be unlocked.
- The in cab alarm and light must function correctly - alarm light and buzzer are ON.

When transporting the container on chassis:

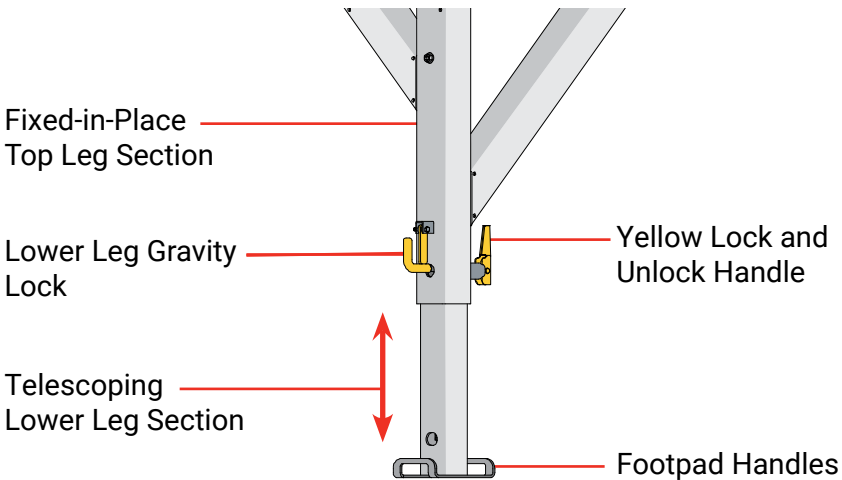
- The container must be properly locked onto the truck - Visually confirm by checking locking hooks and levers before each use.
- Hooks must be undamaged and functioning correctly.
- All legs must be locked and stored in place.
- Safety lockout key must be correctly in place.
- Only operate vehicle with air suspension at normal ride height.
- All lights must be functional.
- Review the pre-trip inspection procedure in this manual before every operation and report any defect or problem on your daily driver inspection report (DVIR).

Container Legs

Front Leg



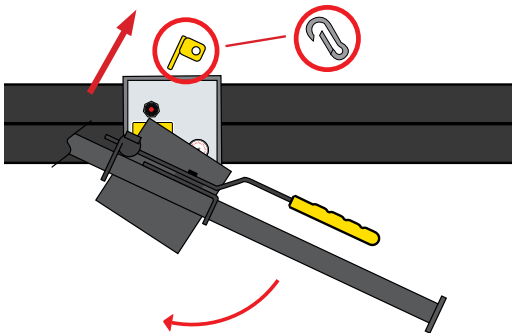
Rear Leg





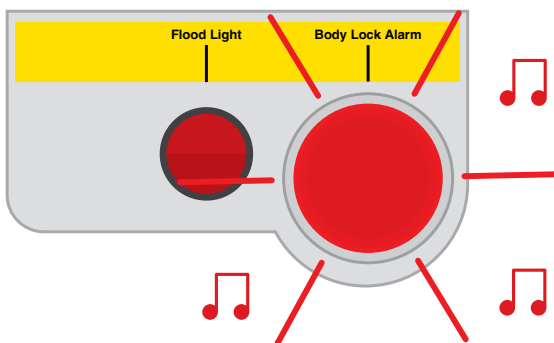
1. Inside the cab, start the truck.

- Engage the parking brake.
- Air pressure must be 120 PSI for the system to operate.



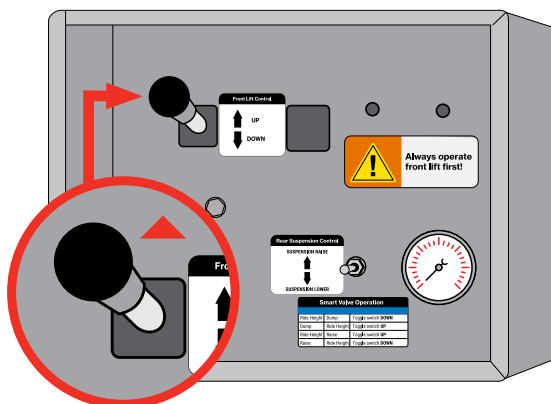
2. At the lifter control box:

- Remove secondary safety clip and locking key.
- Push the yellow safety handle inward to release the locking assembly.
- Lower the locking bar to expose the controls.



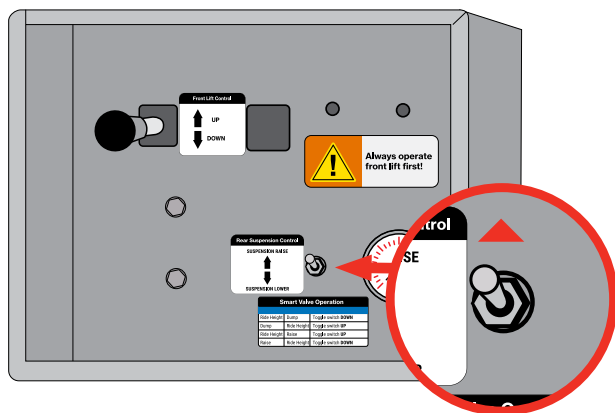
3. The container is now unlocked from the chassis.

- The alarm in the cab will flash and make a sound.
- This will continue until the locking assembly is engaged.



4. At the lifter control box hold the front lift control lever in the “UP” position to raise the front lift assembly.

ALWAYS operate the front lift assembly first.



5. Push the rear suspension control smart-valve toggle switch up to the “SUSPENSION RAISE” position for 1 second to raise the rear suspension.



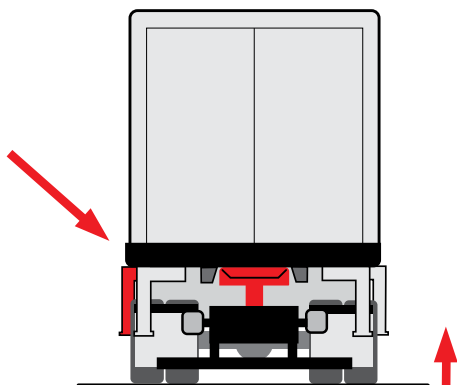
NOTICE:

Always wear gloves for hand protection when working with legs.



WARNING:

NEVER put fingers into holes in legs.
ALWAYS use handles when working with legs.



6. DEPLOY THE LEGS

Start with the front driver's side container leg.

The lift system and container must be in the raised position.



7. Unlock secondary safety latch.



8. Unlock the top leg section using the yellow handle to disengage the spring lock pin.



9. Pull leg out completely.



10. Lock the top leg section into place using the yellow handle.



NOTE: The top leg section must be locked in place. To confirm, be sure the yellow handle is secure and not loose.



11. Unlock the lower leg section using the yellow handle to disengage the spring lock pin.



12. Release lower leg gravity lock and lower the lower leg section using the footpad handle.

It is permissible to push lower leg down using foot.



13. Lock the lower leg section in place using the yellow handle. **The leg is now deployed.**



NOTE: The lower leg section must be locked in place. To confirm, be sure the yellow handle is secure and not loose.



14. Repeat the previous steps on the passenger side front container leg.

**15. Move to the rear leg**

Unlock the lower leg section using the yellow handle to disengage the spring lock pin.

**16. Release the lower leg gravity lock and lower the bottom leg section using the foot pad handle.**

It is permissible to push lower leg down using foot.

**17. Lock the lower leg section in place using the yellow handle. The rear leg is now deployed.**

NOTE: The lower leg section must be locked in place. To confirm, be sure the yellow handle is secure and not loose.

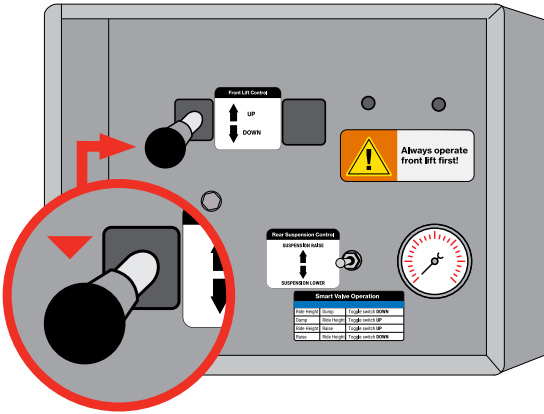




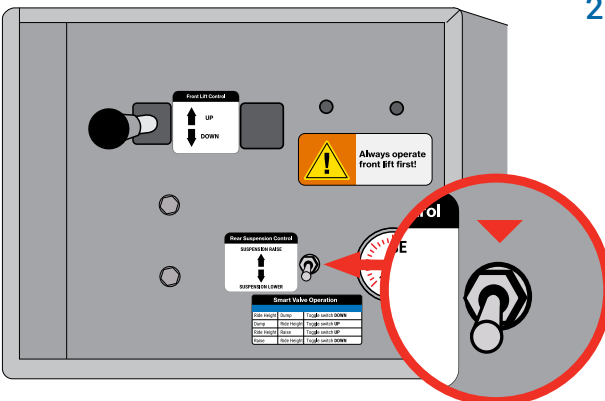
18. Repeat the previous steps on the other rear leg.



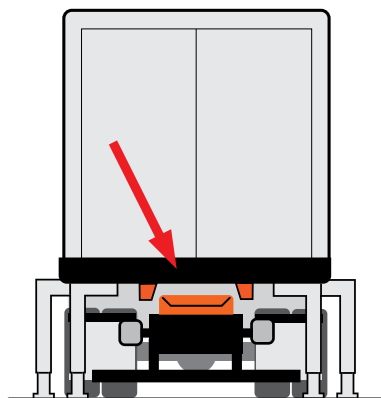
WARNING: Confirm all legs are correctly locked in place.



19. Return to the lifter control box and hold the front lift control lever in the "DOWN" position to lower the front lift assembly.



20. Push the rear suspension control smart-valve toggle switch down to the "SUSPENSION LOWER" position for 1 second to lower the rear suspension to ride height.



21.



Warning: Check for clearance before pulling out

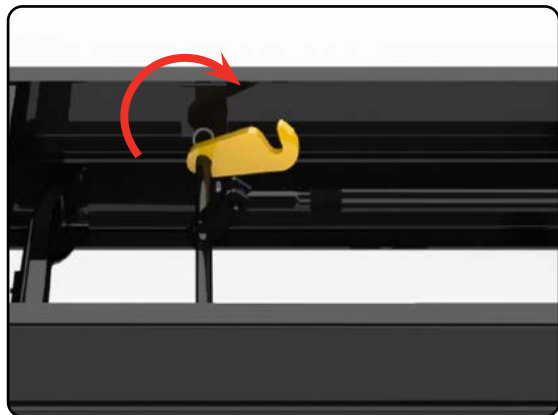
22. Return to the cab of the truck.

- Pull straight out until the chassis is clear of the container.



1. Make sure the locking hooks are in the unlocked and down position.

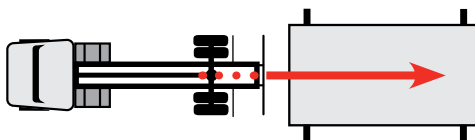
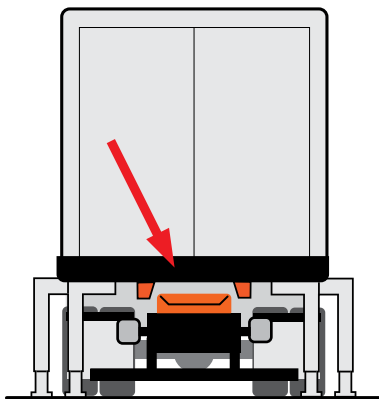
The in-cab container lock alarm will sound until a container is locked in place.

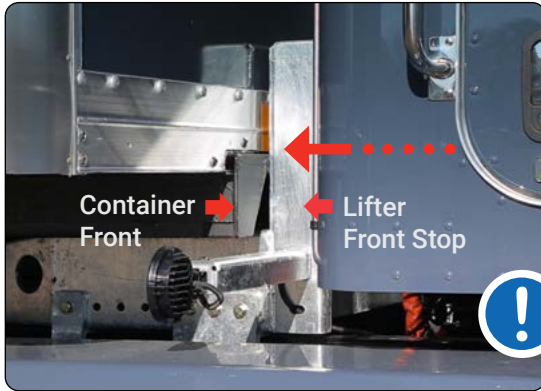


2. Be sure suspension is at normal ride height.



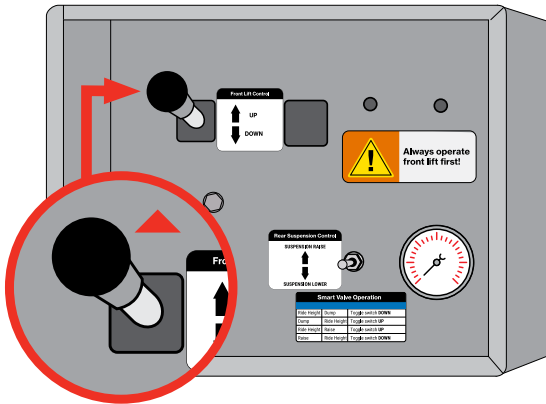
3. Be sure the chassis is aligned straight in front of the container.





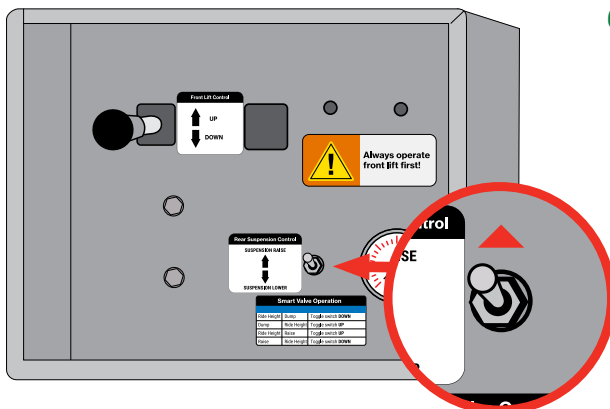
4. Slowly back the truck straight under the container until the front stops on the lifter contact the front of the container.

G.O.A.L. = **Get Out And Look**. Not getting out to check alignment is the number one cause of damage.



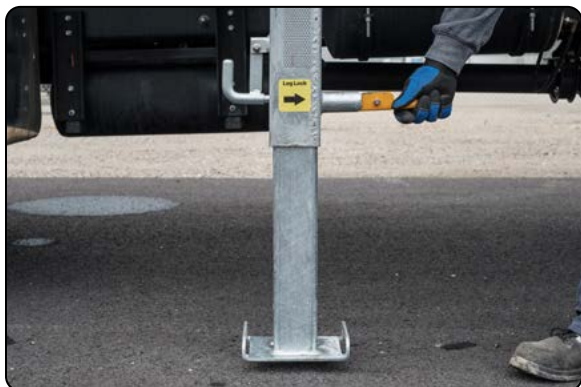
5. **ALWAYS** operate the front lift assembly first. At the lifter control box hold the front lift control lever in the "UP" position to raise the front lift assembly.

Raise it until the front container legs are off the ground.



6. Push the rear suspension control smart-valve toggle switch to the "SUSPENSION RAISE" position for 1 second to raise the rear suspension.

Raise it until the rear legs are off the ground.



7. STORE THE LEGS

Start with the driver's side front leg.

Unlock the lower leg section using the yellow handle to disengage the spring lock pin.



8. Release lower leg gravity lock and raise the lower leg section using the foot pad handle.



9. Lock the lower leg section in place using the yellow handle.



NOTE: The lower leg section must be locked in place. To confirm, be sure the yellow handle is secure and not loose.





10. Unlock top leg section under container using the yellow handle to disengage the spring lock pin.



11. Push the leg in completely.



12. Lock the top leg section into place using the yellow handle. **This will lock the entire leg into place.**



NOTE: The top leg section must be locked in place. To confirm, be sure the yellow handle is secure and not loose.





- 13.** Flip down the secondary safety latch.

Next, repeat the previous steps on the passenger side front leg.



- 14.** Move to the rear leg

Unlock the lower leg section using the yellow handle to disengage the spring lock pin.



- 15.** Release lower leg gravity lock and raise the lower leg section using the foot pad handle.



16. Lock the lower leg section in place using the yellow handle.



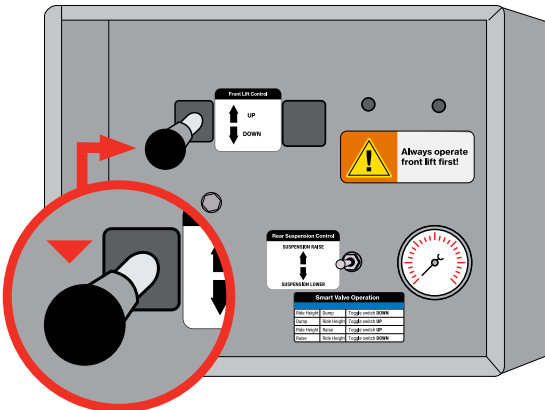
NOTE: The lower leg section must be locked in place. To confirm, be sure the yellow handle is secure and not loose.



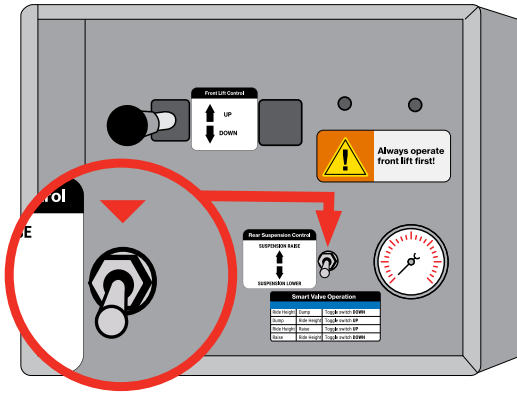
17. Repeat the previous steps on the other rear leg.



WARNING: Confirm all legs are stored and correctly locked in place.



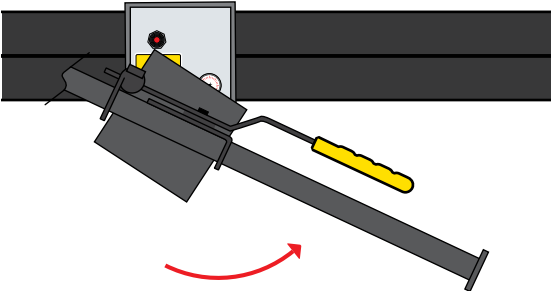
18. Return to the lifter control box and hold the front lift control lever in the "DOWN" position to lower the front lift assembly.



19. Push the suspension control smart-valve toggle switch down to “SUSPENSION LOWER” for 1 second to go from raised to ride height.

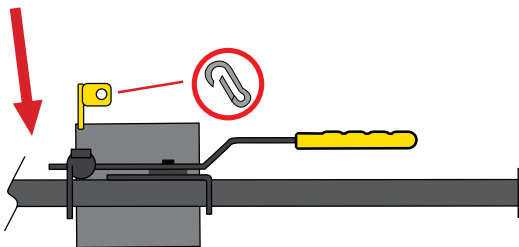


NOTE: Truck automatically returns to ride height at approximately 10 mph.



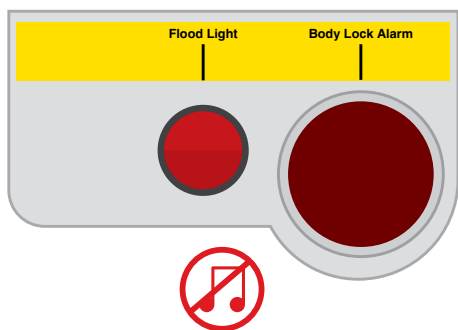
20. Lock the container onto the truck by raising the lifter locking bar.

- The hooks will engage, locking the container to the chassis.



21. The yellow spring-loaded safety handle will move into place.

- Insert the safety locking key.
- Use secondary safety clip to ensure the key stays in place.



22. When the locking hooks are engaged the alarm on the dash will stop flashing and sounding.



23. Confirm that the container is locked onto the truck.

- Visually check that the container locking hooks are securely attached to the locking bars on the underside of the container.



24. Return to the cab. **Be sure suspension is at normal ride height.**

The truck is now ready to be driven.



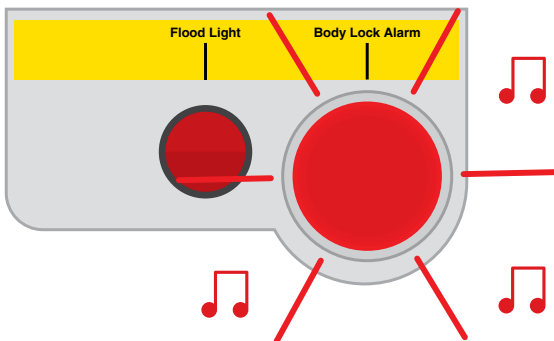
WARNING: An improperly secured container that falls off a chassis can result in injury or death. It is the driver's responsibility to make sure that the container is properly locked onto the chassis before each trip.



1. Each set of hooks must be undamaged, working correctly, and the container must be locked onto the chassis.



2. All legs must be properly stowed and locked.



3. The in-cab alarm must work properly. When container is unlocked the alarm sounds and flashes.



WARNING! Operation of the airbag lifting device is prohibited if it is not functioning correctly.

WARNING! Repair activities may only be carried out by qualified personnel using suitable tools. Do not work in any way which impairs safety when handling the airbag lifting device.

WARNING! Maintenance work may only be carried out by authorized, trained personnel. These persons must also have read and understood this documentation.

WARNING! Continually check the airbags for damage, as otherwise there is a risk of accidents.

WARNING! If air-bag(s) must be removed (only possible when airbag lifting device is raised), then the airbag lifting device must be braced mechanically to prevent it from lowering.

CAUTION! Malfunctions and unanticipated changes in the airbag lifting device must be rectified without delay.

**NOTICE!**

These specifications apply to normal transport conditions. Where operating conditions are less favorable, the maintenance and inspection intervals must be adapted accordingly.

Chassis-Lift Servicing	Servicing Interval	Activity
Visual inspection of airbag lifting device	Daily/before starting (before each use)	<p>Check the airbag lifting device for cracks, deformation and loose bolted connections and the airbag itself for cuts or pinching.</p> <p>Damaged airbag lifting devices must immediately be taken out of operation and repaired or replaced.</p>
Visual inspection of locking hooks	Daily/before starting (before each use)	<p>Check the hooks and linkage for looseness, damage, bending or other irregularities.</p> <p>Damaged hooks must immediately be taken out of operation and repaired or replaced.</p>
Lubrication of bearings	Every 90 days	<p>Lubricate the bearings on the frame using the grease nipples and also grease the lifting pads two times (2X).</p> <p>Normal, commercially available and water-repellent grease can be used for lubrication.</p>

Chassis-Lift Servicing	Servicing Interval	Activity
Wear inspections of airbag, bearing.	During vehicle inspection	<p>At regular intervals, check the wearing parts, in particular the airbag and bearing. To do this, raise the airbag lifting device to its maximum height without any load.</p> <p>If there are any visible signs of cuts, pinching or abrasion that could have damaged the airbag, the bag must immediately be replaced.</p>
Drain air bag	Monthly	With the body removed, raise the air lift to full height to increase pressure. Open manual drain valve on locking frame.

Daily Maintenance Check List

- ☐ Check warning system
- ☐ Check that locking lever is in good working order

90-Day Maintenance Check List

- ☐ Check all truck lights
- ☐ Remove body from truck and power wash truck chassis
- ☐ Grease all locking shafts
- ☐ Grease locking lever
- ☐ Check measurements of front hooks
- ☐ Check measurements of rear hooks
- ☐ Adjust front and rear hooks if required
- ☐ Check body stops



WARNING! Damaged components, i.e. components that are permanently deformed, broken or cracked must always be replaced.

Servicing Support Legs

To ensure that the support leg can be moved easily in the support bearing, the support tube can be greased if required.

The support tube on the support bearing should be lubricated at least every three months.

Support legs as well as their attachment and mounting on the swap body should be regularly checked for correct function, damage and wear. The intervals must be defined according to the frequency of container swaps, e.g. at least every 14 days if there are several swaps every day, or at least every 3 months if the swap intervals are longer.



DEMOUNTABLE CONCEPTS

• AMERICA'S SWAP BODY •

**Training videos and
documentation available online at
support.demount.com/amazon**



Contact Info: US, Canada & Mexico

Toll Free: (844) 364-4021

Online: [demount.com](https://support.demount.com)

Demountable Concepts, Inc.
200 Dr. Leo J. McCabe Blvd.
Glassboro, NJ 08028 USA