



Peterbilt 567/579 NGP (Next Generation Peterbilt) High Roof / Low Roof 4" Extended Panel Instructions

1002 – 5/7/20



Pre-Inspect Truck

(You need to know what works before starting to disassemble.)

Marker Horn

Speakers

Heater

Washer Pump

ABS Brake System

Rear Utility Lights

Evacuate A/C & Drain Heater Lines to Sleeper.

- Disconnect Battery.
- Block Floor on Cab behind Door & In Front of Air Ride.
- Loosen All Air Ride Bolts & Prep for Removal.
- Remove the shock from the sleeper.
- Remove the torque rod from frame and sleeper.
- Remove the air bags.
- Remove the air control valve.

AT THIS TIME, DAYCAB COMPANY DOES NOT MANUFACTURE AN AIR RIDE SYSTEM FOR THE NGP. YOU WILL NEED TO CONTACT PETERBILT FOR AN AIR RIDE SOLUTION. MAKE NOTE THAT YOU MAY NEED TO INSTALL THE AIR RIDE PRIOR TO INSTALLING PANEL, WHILE SLEEPER IS OFF, FOR BOLT ACCESS.

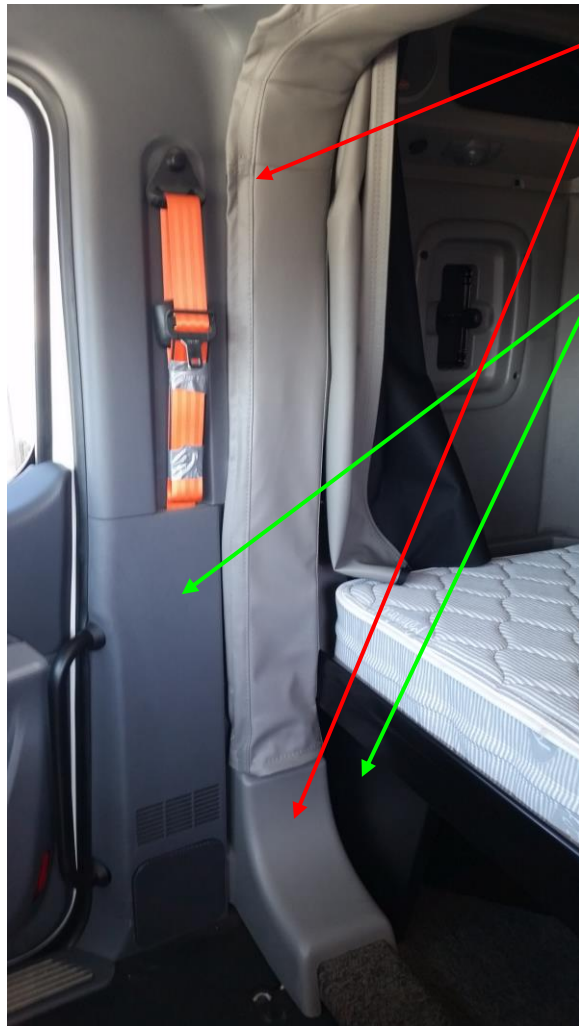


B8-E Rivet, used for panel installation.



Black Interior Screw, used for interior installation.

Removal of Components



Before removing sleeper you should unbutton interior trim boot from cab.

Unplug sleeper wiring.

You may need to remove passenger closet or passenger side interior panels to access these disconnects.



1



Remove side shrouds if equipped.



Remove sleeper bolts.



Remove black gasket connecting sleeper to cab.

Remove sleeper.



Once sleeper is removed clean flange outside of cab (walkthrough ring).

Our panel installs on the outside of the walkthrough ring inside the huck/rivet line. There is no need for any rivet/huck removal. There is an internal channel that we rivet into. You have about 1/8" of tolerance.

Pull from the **inside** of the ring and mark a line at .8125" (13/16") on each side and top/bottom.

Position panel on flange (line up to your prior marks). Using the panel as a template, drill a hole through the walkthrough ring in each corner and each side with a 17/64" drill bit.

Make sure that you DO NOT drill into the side wall of the flange channel.

Insert test rivets into holes but do not pull yet. **They may feel as though they "bottom out" but the pre pull of the rivet gun will take up this slack.** Once you are satisfied with the test location, drill remaining holes.

Remove panel, clean burrs, and apply a bead of alumilastic to the panel laying the bead over the holes. Spread thin.

Install panel.

Use silicone on the inside of your cab.

<p style="text-align: center;">Interior Installation</p>	<p>Reinstall your interior plastic behind doors and above/around conversion. You will need to reuse your upholstery boot trim and possibly trim the lower plastic interior to fit.</p> <p>Install conversion interior using black interior screws. Screw into the areas of fiberglass core. Lower section should bend with angle and stick out into your cab at lower sides.</p> <p style="text-align: right;">4</p>
----------------------------------------------------------	----------------------------------------------------------------------------------------------------------------------------------------------------------------------------------------------------------------------------------------------------------------------------------------------------------------------------------------------------------------------------------------------------------------------

If you are changing the “USE” of your truck/tractor (i.e. changing from 5th wheel to dump bed), you should contact a local brakes or parts dealer for information on changing the brake-proportioning valve. You may end up with only front brakes.

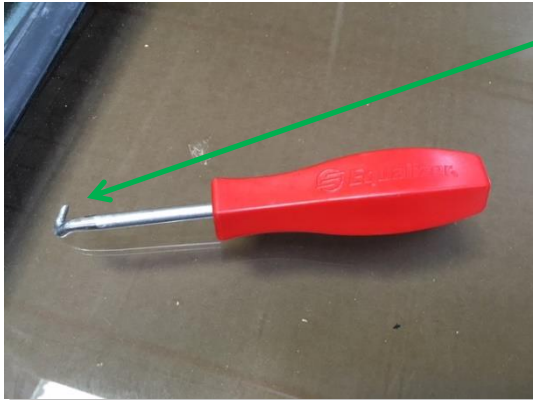
Sometimes when converting from a sleeper to a day cab you will evacuate the AC lines and cut the lines leading to the sleeper. Use your own judgement or a certified AC technician to cap/plug the AC lines. At Daycab Company we crimp the ends and solder close.

tech@daycabs.com
www.daycabs.com

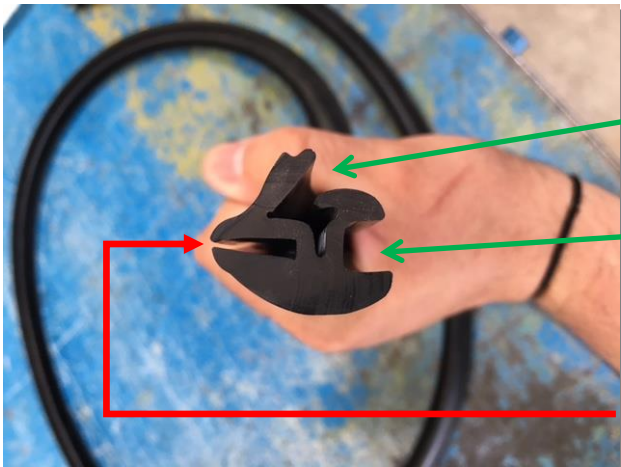


GASKET-WINDOW INSTALLATION INSTRUCTIONS

1001



You will need a window gasket tool. You can purchase one through your local auto store.

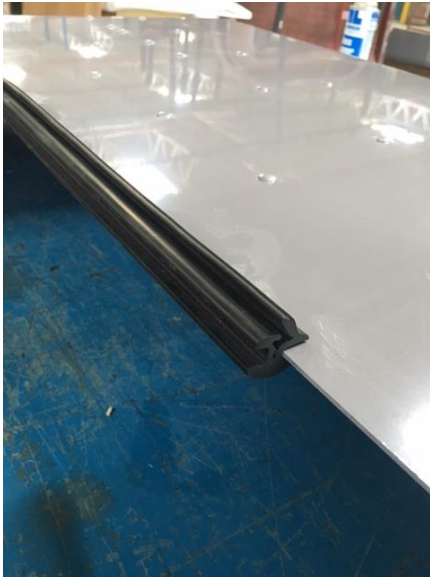


Outside of truck (gelcoat/painted side)

Glass Side

Panel Side

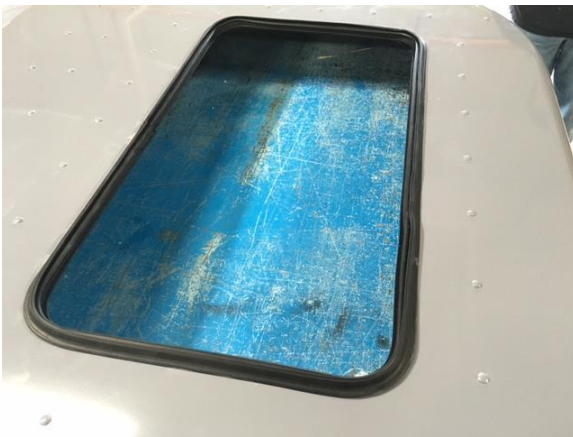
1



Clean area of debris around window opening.

Start installing the gasket by placing one end in the lower center of the window cutout.

Work your way around the opening.



Window Gasket Installed



Make sure that the two ends meet up and touch flush.



Remove bump-pads from glass (if attached).

The side with the Daycab Company sticker goes towards the outside of the truck (painted side of panel).



Start glass installation by sliding in a corner into gasket (+) and pivoting other side into opposing corner.



Use gasket tool to “flip” gasket lip over glass.

You will need to use soapy water/window cleaner to get gasket lubricated. This will make glass installation a lot easier.



Once you get glass fully inserted into gasket, you will need to use the gasket tool to push the locking flap into the gasket around the whole window. This locks the window into place.

Make sure that the gasket ends are forming a tight seam



Inspect the corners to make sure that no wrinkles are visible and that the locking flap is tight.

Paint Process for Fiberglass Parts



1. Wash with a mild, non-abrasive dish soap and rinse.
2. Sand panel. We recommend using 320 grit sand paper/ Scotch-Brite pads.
3. Rinse with water and dry.
4. Clean with anti-static surface cleaner according to directions on container.
5. Your panel is now prepped and ready for paint.

Notes:
