

## Stairs, Crossover Stairs

Stairs for various commercial and industrial applications such as access to machinery, elevated doorways, jobsite trailers, mezzanines.

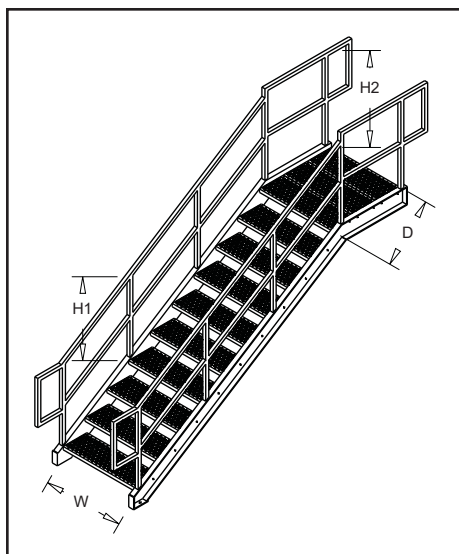
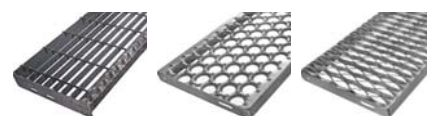
Crossover stairs allow for easy traversing of piping, ducting, production lines, or other obstructions.

**Crossover stairs to traverse machinery/ducting.  
Stairs with landing at top. Free standing stairs.**

- 32.5° angle, 7"/11" rise/run
- 45° angle, 7"/7" rise/run
- 36" wide treads, 40.5" overall width.
- One piece or modular construction
- 36" high guardrail on stairs, 42" high on platform.
- Hot dip galvanized

### Options:

- Steel or Aluminum C Channel construction.
- Closed Risers
- Debris shield under treads.
- Bar grating, diamond channel, or round channel treads.
- 1 ½" SQ tube or 1.66" round pipe guardrail.
- 12" Handrail Extensions at top and bottom.



Material	ASTM-A36 & ASTM A500
Guardrail	1 ½" 0.125 wall tube 1 ¼" sch 40 pipe
Stringer	C 8 x 11.5 channel

Dimensions	H1	36"
	H2	42"
	D	36"
	W	36"