



2021, January 1st
data subject to change

Lightgogo kit

LED Post Top Lighting

Smart Lighting kits 40 to 60 Watts



[Installation Instructions
on Page 9 and Page 10]

20, 40, 60 Watts

3000K/4000K/5000K

5 Years Warranty

Calculated L80>100,000h @ Ta 25°C



Why Lightgogo kit ?

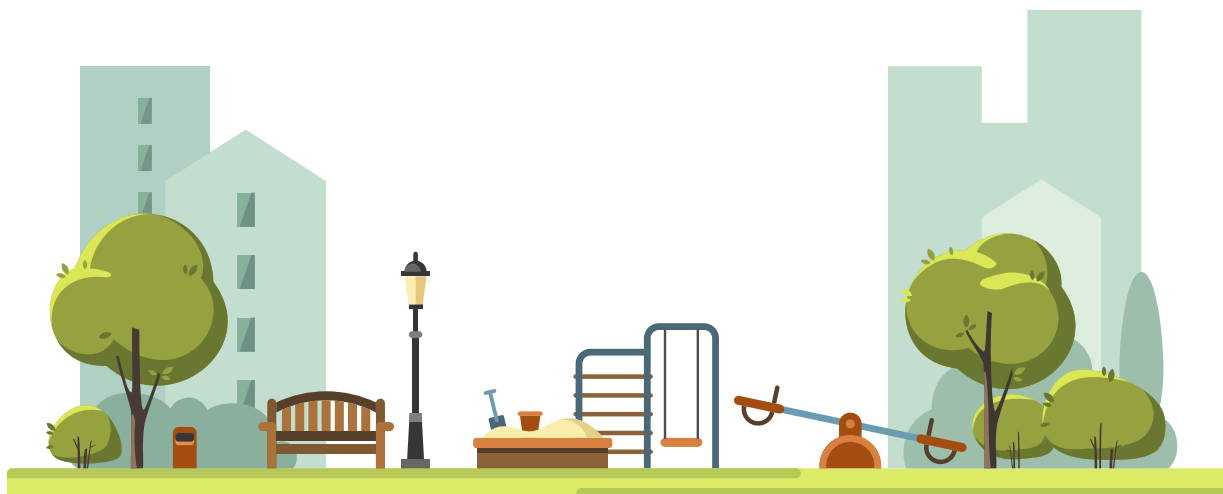
World's first motion detectable classic outdoor lanterns. Lightgogo kit is LED post top light, offers the world's first motion detectable, programmable, smart dimming, energy efficiency, and together with the quality of light for classic outdoor lanterns.

Built with full smart features. Lightgogo kit has all its smart features of Lightgogo 1's smart solution, such as the unique 10-period programmable, human microwave sensing functions. And it's sensing delay time settable based on each period's control.

Improved optical system for better energy saving. The optical system provides improved horizontal and vertical uniformity. Reduced glare and improved lighting control.

ANETHIC's unique optical technology effectively aims the light where needed. This smart post-top lighting kit can yield up to a 70-percent reduction in system energy, compared with standard HID systems.

Longer lifespan, lower expenses. This reliable system operates well in cold temperatures, and offers more than 15 years of service life, reducing maintenance frequency and expenses, based on a rated 100,000-hour life and 12 hours of operation per day.



Lighting Features

Programmable + Smart dimming + Motion sensor + Delay time settable

- The world's first smart solution for classic outdoor lanterns, with functions of motion detachable, programmable, and smart dimming built-in.
- Unique 10-period programmable load power based on each period's control.
- Remote controller's wireless communication, allowing for setting, reading parameters, reading status, etc.
- Extensible to IoT remote communication monitoring functions.

180lm/w + Up to 70% super energy saving Kits

- Super high-efficiency up to 185LM/W, more than 15 years of service life.
- 70 CRI at 3000K, 4000K, and 5000K typical.
- Super energy saving kits, up to 70-percent reduction in system energy.

Applications

- Local Roadways
- Parks and Pathways
- Antique Streetscapes
- University and Business Campuses



Side View

Design Features (with housing)

Lamp housing with die-cast aluminum body

Microwave motion detection sensor

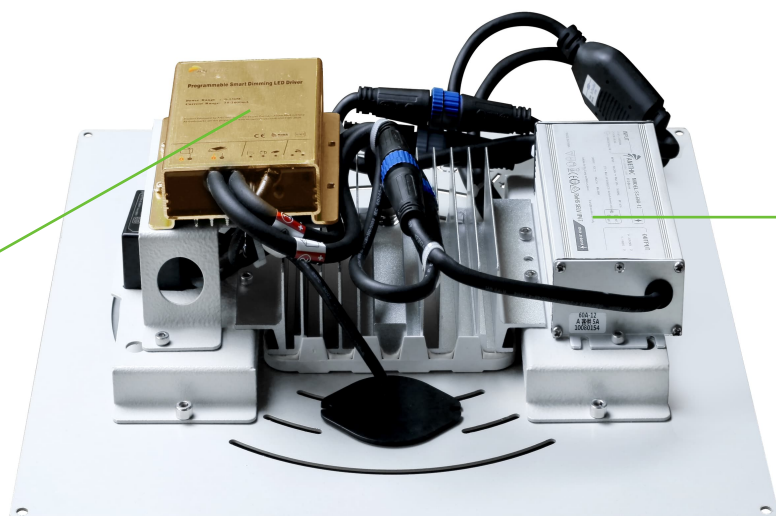
Super High efficiency LEDs Module up to 180lm/w

Die cast mounting pipe stop. Adjustable for 40-60mm diameter mounting pipe



Design Features (kit)

10-period
programmable smart
dimming LED driver

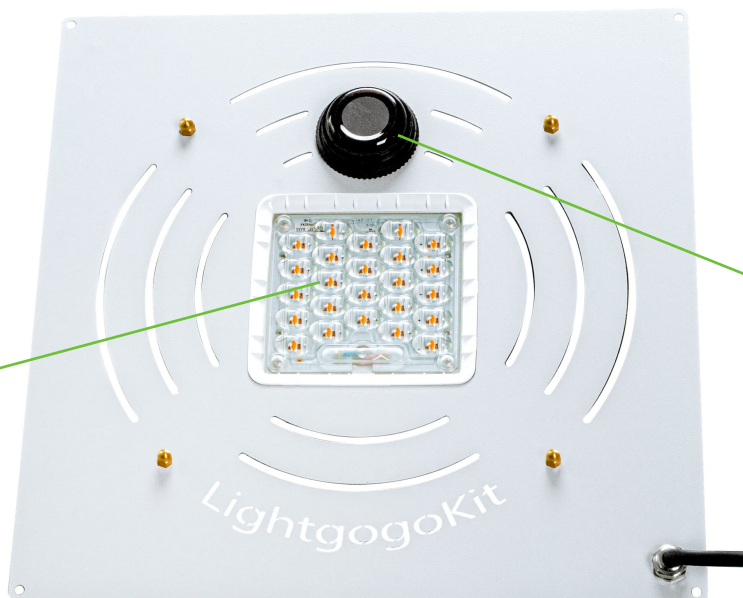


Constant voltage power
supply with surge
protection 6KV and
additional separate
secondary SPD 10KV

Note

The kits are customizable to fit square, round, and different sizes of housings

Super High efficiency
LEDs Module up to
180lm/w



Microwave motion
detection sensor

Specifications

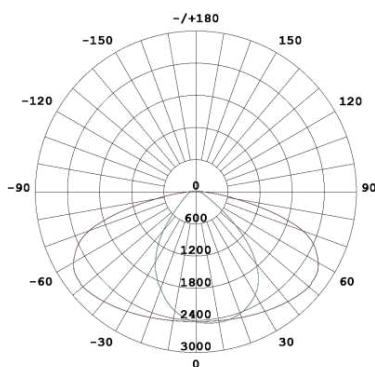
Model Name	Lightgogo kit		
Total Power	20 W	40 W	60 W
Smart Controller's Input Voltage (batType)	12 Vdc	12 Vdc	12 Vdc
Load Current(max.) (LED-Cur)	0.8 A	1.5 A	2.0 A
Lumen (<i>lamp output</i>)	3700 lm	7,400 lm	10,500 lm
Efficiency (<i>lamp output</i>)	Up to 185 lm/w		
CCT	Standard 3000K (3000K/4000K/5000K upon request)		
CRI	> 70		
Lifetime	100,000 hours at 25°C ambient temperature		
Operating temperature range	-30 to 45°C		
Electrical	Input voltage 100-240Vac, 50/60Hz, Power Factor(PF): >90 Total Harmonic Distortion(THD): <20%. 10KV SPD		
Dimming	Unique 10-period programmable with motion detection smart controlling system. Dali, 1-10V, PWM upon request		
Options	0.5m External cable (other length upon request) IoT remote communication monitoring functions		
Construction & Finish	Housing: ADC12 die-cast aluminum Screws: 304 stainless screws Corrosion resistant polyester powder paint, minimum 2.0 mil. thickness		
Standard Color	Black color (RAL & custom colors available)		
Mounting	Adaptor for post-top mounting diameter 60mm		
IP rating	IP67		
Impact Resistance	IK08		
Standard & Certifications	CE, RoHS		

Note

The power supply's output voltage=smart controller's input voltage=12vdc,
smart controller's output voltage=LED module's input voltage which is 20-27Vdc.

Lighting Distributions

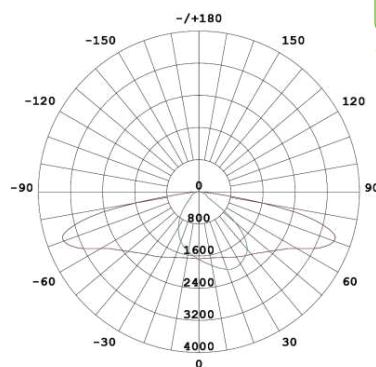
Type I Short
(2210)
1,0500 Lumens
60 W, 5000 K



Symmetric 150° x 70°

The default lens option

Type I Short
(2219)
1,0500 Lumens
60 W, 5000 K



Symmetric 160° x 80°

Remote Controller



Programming Settings by Remote Controller

No.	Code	Description	Default parameters	Data range	Step length
1	BatType	Smart controller's input voltage choosing	Li12	12V or 24V	-
2	S-D-Time	Sensing delay time	10S	0 second to 60 mints	1S
3	PV-Wake	PV wake up	Yes	Yes/No	-
4	L-Con-V	Light control voltage	5.0V	3.0V~11.0V	1V
5	L-Con-DT	Light control delay time	10S	5 second to 60 mints	1S
6	Over-DV	Over discharge voltage	11.2V	7.5V~17.0V	0.1V
7	Over-DRV	Over-discharge recovery voltage	12.6V	7.5V~17.0V	0.1V
8	Chg-Volt	Charge voltage	14.6V	7.5V~17.0V	0.1V
9	Chg-CR-V	Charge recovery voltage	13.6V	7.5V~17.0V	0.1V
10	Cold Chg	To charge at min. temperature	-35°C	-40°C~-00°C	1°C
11	HeatWork	To work at max. temperature	65°C	40°C~90°C	1°C
12	LED-Cur	LED load current	600mA	150mA~10A	10mA
13	SmartPow	Smart power	Auto	Auto/Low/Mid /High/No/USE	
14	Load Pow Set	10-period power settings table	Press To Enter The Load Parameters Setting Interface		
15	Re-Deflt	Restore factory default values	No	Yes/No	-
16	AC-SW-V	Switching voltage between solar and mains 100-240Vac for hybrid system	11.5V	2.0V~17.0V	0.1V

Note

1. Above parameters under green color are available for the Lightgokit and Lightgogo I series.
2. All parameters are available for Lightgogo4, Lightgogo5, and ANETHIC's other solar street light products.
3. The Switching Voltage is only available for ANETHIC's Hybrid products and systems.
4. The 12Vdc is a standard system, voltages of code no. 6/7/8/9 will automatically*2 to run a 24Vdc system.

10-Period Power Settings Table

Find no.14 with code "Load Pow Set" in main menu and press to enter the 10-period Load Parameters Setting Interface below

No.	Code	Description	Default parameters	Data range	Step length
a	S-Time-1	1 - period	4:00	0 to 15 hours	1 minute
b	S-C-Pow1	Power with human motion sensed	70%	0~100%	1%
c	S-L-Pow1	Power without human motion sensed	20%	0~100%	1%
d	S-Time-2	2 - period	5:00	0 to 15 hours	1 minute
e	S-C-Pow2	Power with human motion sensed	40%	0~100%	1%
f	S-L-Pow2	Power without human motion sensed	10%	0~100%	1%
g	S-Time-3	3 - period	6:00	0 to 15 hours	1 minute
h	S-C-Pow3	Power with human motion sensed	60%	0~100%	1%
i	S-L-Pow3	Power without human motion sensed	20%	0~100%	1%
j	S-Time-4	4 - period	0:00	0 to 15 hours	1 minute
k	S-C-Pow4	Power with human motion sensed	100%	0~100%	1%
l	S-L-Pow4	Power without human motion sensed	10%	0~100%	1%
m	S-Time-5	5 - period	0:00	0 to 15 hours	1 minute
n	S-C-Pow5	Power with human motion sensed	100%	0~100%	1%
o	S-L-Pow5	Power without human motion sensed	10%	0~100%	1%
p	S-Time-6	6 - period	0:00	0 to 15 hours	1 minute
q	S-C-Pow6	Power with human motion sensed	100%	0~100%	1%
r	S-L-Pow6	Power without human motion sensed	10%	0~100%	1%
s	S-Time-7	7 - period	0:00	0 to 15 hours	1 minute
t	S-C-Pow7	Power with human motion sensed	100%	0~100%	1%
u	S-L-Pow7	Power without human motion sensed	10%	0~100%	1%
v	S-Time-8	8 - period	0:00	0 to 15 hours	1 minute
w	S-C-Pow8	Power with human motion sensed	100%	0~100%	1%
x	S-L-Pow8	Power without human motion sensed	10%	0~100%	1%
y	S-Time-9	9 - period	0:00	0 to 15 hours	1 minute
z	S-C-Pow9	Power with human motion sensed	100%	0~100%	1%
a	S-L-Pow9	Power without human motion sensed	10%	0~100%	1%
b	MorTime	10 - period	0:00	0 to 15 hours	1 minute
c	S-C-Pow	Power with human motion sensed	100%	0~100%	1%
d	S-L-Pow	Power without human motion sensed	10%	0~100%	1%
Go Back		Go Back To Main Menu	Press To Go Back To The Main Menu Setting Table		

Note

Above parameters are all available for Lightgogo 1/4/5/kit series products

Key Functions of Remote Controller

Send information...

- I. Determine the working time, from 0 seconds to 60 minutes after motion detection, check it with code no. 2 “S-D-Time”.
- II. Setup the load power according to request, with code no. 12 “LED-Cur”.
- III. Design your very personal and professional settings, with each period’s working time, power before and after motion detection, find code no. 14 “Load Pow Set” and press to enter the load parameters setting interface.

Receive parameters and check the working status...

- I. To receive and check the parameters have sent, and make sure things are all right.
- II. Check the load info. such as working current, voltage, and power, etc.
- III. Find out the total working time in the past few days, such as totally sensing hours, total working hours, totally working days etc. That helps to make a better decision for better parameter settings.

To simply test your lamp...

- I. By pressing the “Test” key of the remote controller, to send a test command to the lamp.
- II. The test powers are 100%, 70%, 50%, and 30% in turn.

Remote Controller



Steps to Run a Remote Controller

Step 1: Press any key to turn on the remote controller device.

Step 2: Determine all your parameters in main menu.

Step 3: Enter the load parameters setting interface, to have your full working time and power settings.

Step 4: Find the “Send” key, then press it to send parameters to the smart LED street light, and it's done.

Note

To have perfect parameters of your system, you need to read carefully the User Manual of the remote controller, and there are more functions are waiting for you to discover.

Ordering Information

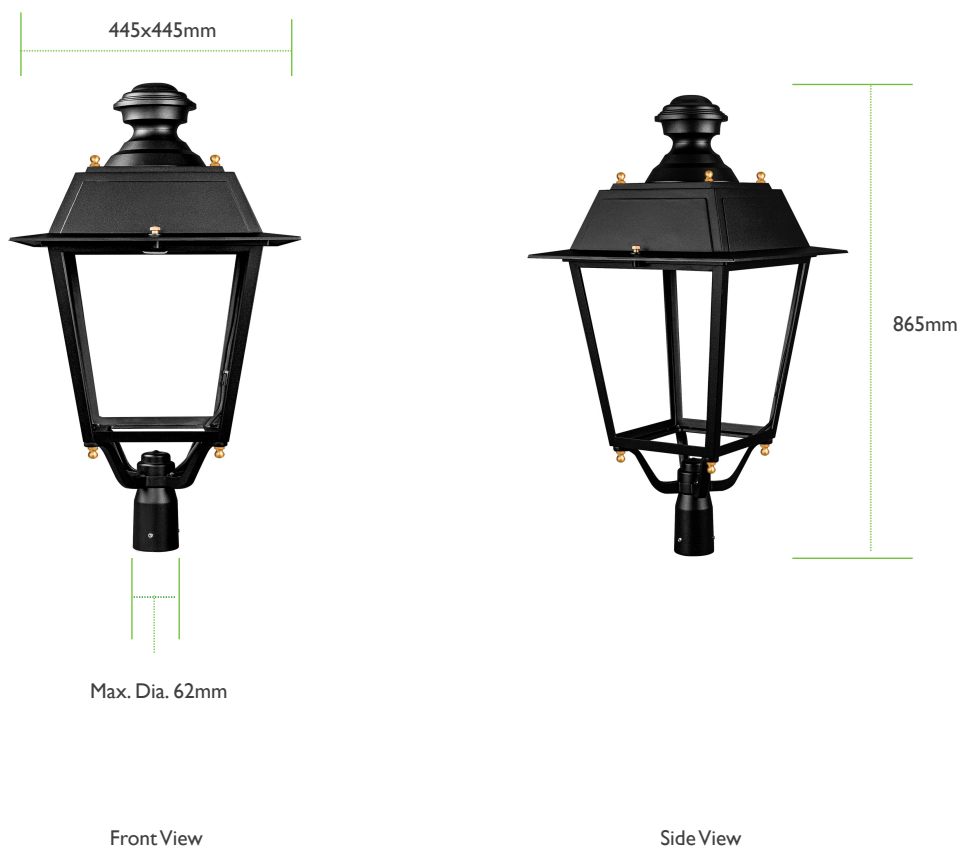
Example: Lightgogokit-20WEPW2219PI

Product Code	Power	—	Voltage	Light color	Optics	LEDs	—	Options
Lightgogokit-20W	20 W	—	E	PW	2219	PI	—	Example
Lightgogo kit-20W	20W		E: 100-277V	WW: 3000 K NW: 4000 K PW: 5000 K	2210, 2219	PI: Super bright 5050 LEDs		Photocell IoT Controlling System
Lightgogo kit-40W	40 W							
Lightgogo kit-60W	60 W							

Note

Please contact us for the options and the lead time which will be varied depending on the options selected.

Packaging Information



Product Code	Packaging Unit	Product Dimensions LxWxH	Net Weight	Packaging Dimensions LxWxH	Gross Weight	Volume	Quantity In 20ft Container
Lightgogo kit with square housing	One carton box	445x445x865 mm	8.0 kg	455x455x880 mm	9.5 kg	0.17 m ³	130 Sets
Lightgogo kit light engine	One carton box	350x350x10 mm	3.5 kg	380x380x140 mm	4.5 kg	0.014 m ³	1700 Sets



All trademarks are the property of their respective owners. Information provided is subject to change without notice. All values are design or typical values when measured under laboratory conditions.
© 2021 ANETHIC

E-mail: anethic@anethic.com

WhatsApp: +86 135 3008 9063

Web: www.ANETHIC.com