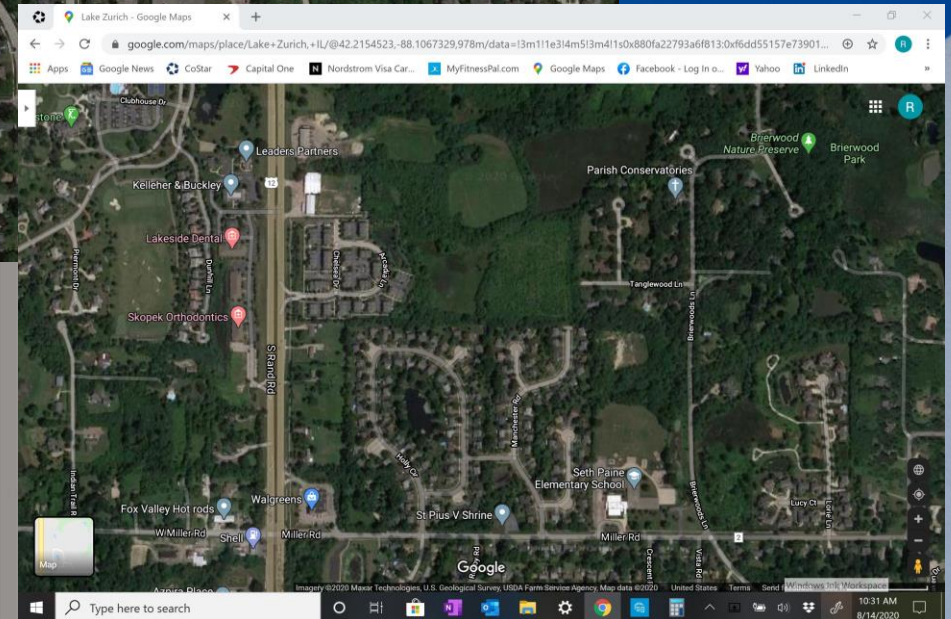
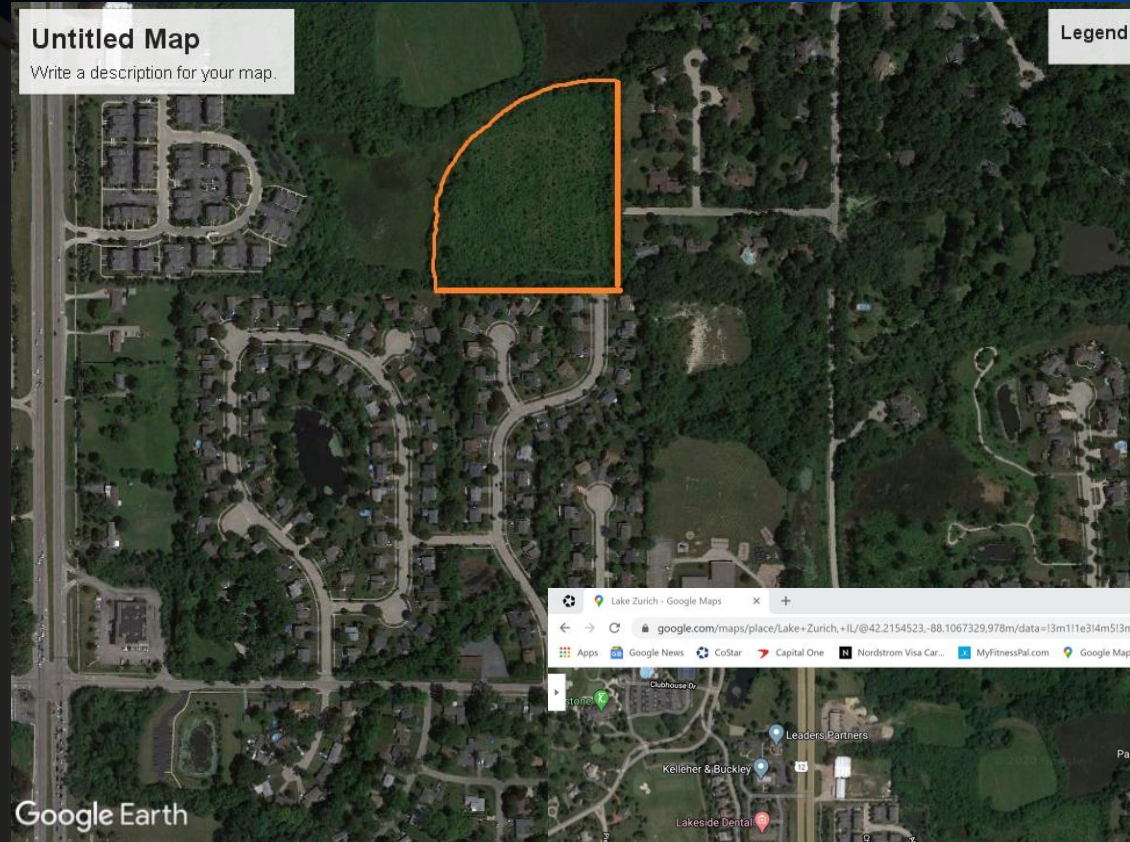


Manchester Road, Lake Zurich, IL

Platted Residential Land Site
For Sale: \$850,000

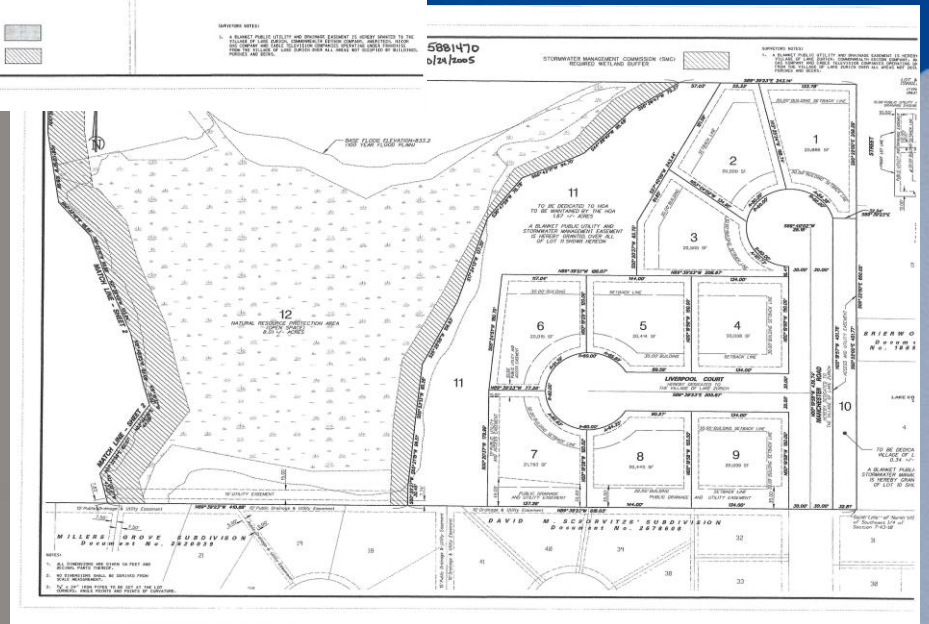
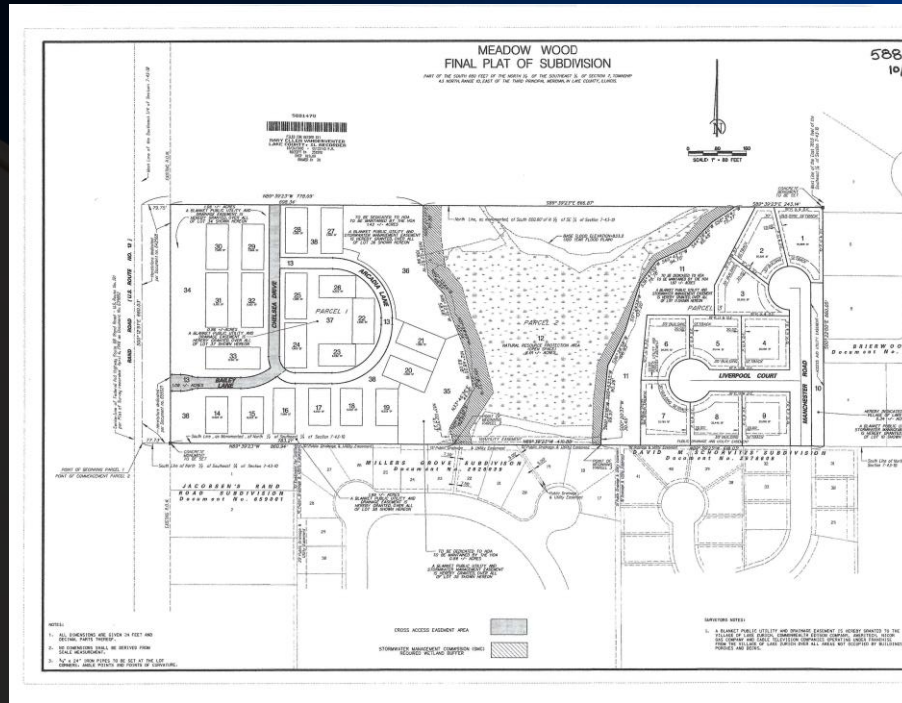


Ron L Roberti
Senior Broker
847.651.0656
ron@resourcecommercial.net



Site Highlights

- +/- 7.7 Acres
- Currently Zoned R-4 for 9 Single Family Homes
- Potential Rezoning to Multifamily
- Utilities Stubbed to Manchester
- Buffered by Wetlands to the West, Hawthorn Woods to the East
- Ingress / Egress - Rand Road to Miller Road east to Manchester North



Area Highlights

- Top Tier School District
- Walk to Elementary School
- Close to Rand Road Corridor Shopping, Banking, Dining, Entertainment
- Near Lakefront / Paulus Park



Manchester Road, Lake Zurich, IL

Disclaimer

The information contained in the memorandum has been obtained from sources we believe to be reliable; however, Resource Commercial Advisors, or any of their officers, employees, or agents, has not verified, and will not verify any of the information contained herein and makes no warranty or representation whatsoever regarding the accuracy or completeness of the information provided. This memorandum does not purport to be all-inclusive or to contain all the information which prospective lessee or purchaser may desire. References to square footage or age are approximate. No legal liability is assumed or shall be implied with respect thereto. The owner expressly reserves the right at its sole discretion to reject any or all proposals or expressions of interest in the property and to terminate discussions with any party at any time with or without notice.

Agency Disclosure

Ron Roberti ("Licensee") of Resource Commercial Advisors is acting solely on behalf of the Owner or Lessor of the real estate and any information given to the Licensee by the Purchaser/Lessee may be disclosed to the Owner//Lessor.



Ron L Roberti
Senior Broker
847.651.0656
ron@resourcecommercial.net

Manchester Road, Lake Zurich, IL