

MCR Technologies Group, Inc.

Home of the *Weigh Shark*, not just another scale company!



Belt Scale Application Form (Rev. 05/21/2021)

Company: _____

Contact Name: _____

Phone: _____

Email: _____

Application Data:

Project or Conveyor Name: _____

Material Conveyed: _____

Wet or Corrosive Application: _____

Type of Equipment to be installed on: _____

Belt Width: _____

Belt Speed: _____

Idler Spacing (Center to Center): _____

Max Tons Per Hour: _____ Min Tons Per Hour: _____

Conveyor Length: _____

Idler Type: B, C, or D (Type E or F requires a Heavy Duty Application)

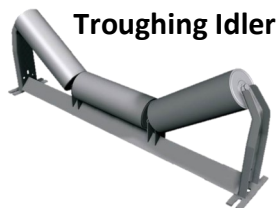
Does Conveyor Belt Angle Change during operation (up/down or side to side): _____

Accuracy Desired: _____

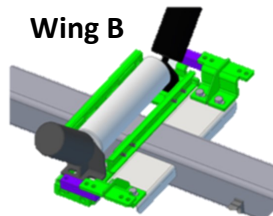
Power Source: Direct line or Generator _____

Idler Design: _____ (Please submit photo of idler)

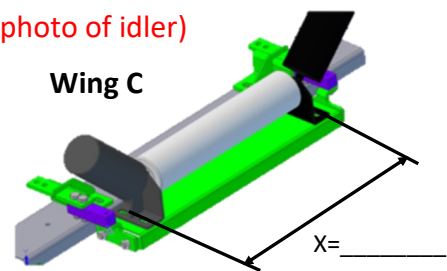
Note—When used with portable equipment the accuracy could decrease based on the type of load and installation.



Troughing Idler



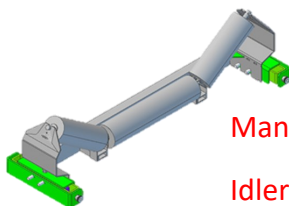
Wing B



Wing C

Provide "X" dimension for Wing

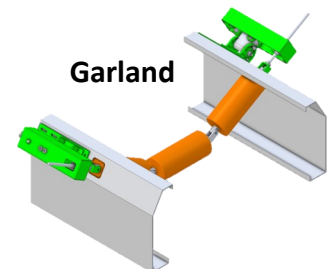
CIT - Channel Insert Idler



Required For CIT Idler

Manufacture Name _____

Idler Model _____



Garland

MCR Technologies Group, Inc
P.O. Box 1016 Sterling, IL 61081
815.622.3181
www.weighshark.com
sales@weighshark.com

MCR Technologies Group, Inc is a North American Distributor
for the following German Companies



Digital Metal Detector

CONVEYOR
SAFETY SWITCHES



Analog Metal Detector

MCR Technologies Group, Inc.

Home of the *Weigh Shark*, not just another scale company!

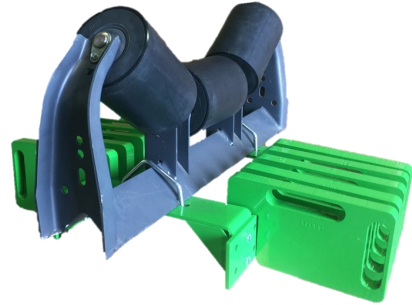


Belt Scale Application Form Options

Mark "X" by the item you would like quoted.

Calibration Weights

- Calibration Weights and Bracket
- Weights only
- Mounting Bracket only



Radios

- Omni or Directional Radio



Remote Display

- Standard Display Screen (7" Diagonal)
- XL Display Screen (10" Diagonal)

Plant Efficiency: 78%				
Scale Name	Total	Rate	Speed	Eff %
C1	2697.9	163.1	254.4	47%
C7	3994.5	233.7	316.2	67%
C5	4397.6	276.6	221.4	102%
C1	21.4	1355.3	546.7	100%
C6	3976.7	241.4	246.0	97%
C3	3814.5	221.8	235.6	63%

Metal Control Box

- Metal Control box with window



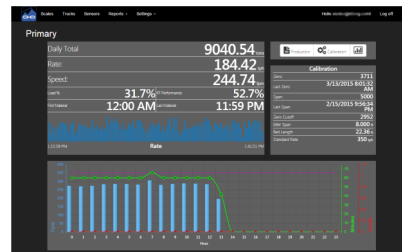
Protective Metal Cabinet

- Large HD Metal Enclosure Cabinet with lock for Control Box or Printer (24" x 20" x 8.75")



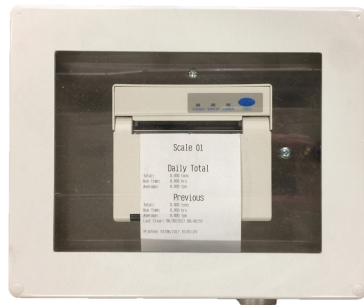
AggLink

- Ability to see totals from Control Box on Smart Phones, Computers, and Tablets.



Printers

- 12 Volt
- 24 Volt
- 110 Volt



MCR Technologies Group, Inc
P.O. Box 1016 Sterling, IL 61081
815.622.3181
www.weighshark.com
sales@weighshark.com