

Rule Based Configuration

Change how the job is printed based on rules

Many organisations restrict the use of colour printers due to the high costs of printing. Some even stop purchasing colour printers altogether as an extreme method of reducing their printing budgets. While this action may reduce costs, it also removes the clear business benefits of printing in colour. It can also drive up costs elsewhere in the organisation, as colour printing is outsourced rather than produced internally.

With uniFLOW, there are other ways to allow all users to enjoy the benefits of colour printing without losing control of the printing budget.

By using uniFLOW and the uniFLOW Universal Driver, the administrator can define how documents are printed when certain rules are matched. Rules can include the application used to create the print job, the number of pages in the document or its total cost. For example, emails can be set to be automatically printed in black and white or jobs over twenty pages to be double sided.

As well as automatically changing the printing properties of the job, uniFLOW can provide an interactive prompt to the user to change their printing behaviour. For example, when a user prints a web page in colour, they can be prompted to change the job to be printed in black and white or to keep the output in colour. The user does not have to delete the original job and re-submit it, but only presses a button on the pop-up. The user can also see the cost savings that would be made from changing how the job will be printed.

Through the use of automatic and interactive printing changes, the organisation can allow users to benefit from accessing colour devices, without printing costs spiraling out of control. Any savings made from uniFLOW changing how the job will be printed are stored in the database for later reporting¹.

Advantages of using uniFLOW

- An integrated solution with functions including print/copy accounting, secure printing, job routing and document capture
- A modular system allowing it to be configured specifically to address the needs of your business

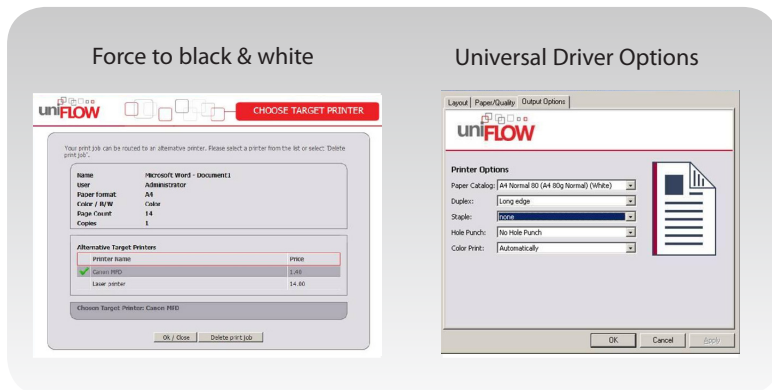
Advantages of using the Rule Based Routing Configuration

- Automatically change how the job will be printed based on rules
- Prompt the user to change how the job will be printed
- Different rules can apply to printers, users and groups
- Allow all users to gain the benefits of colour printing without risking the printing budget
- Avoids the printing of unnecessary costly jobs
- Ensures that users are aware of the costs involved with printing

1 Features require the Statistics module

Rule Based Configuration

Change how the job is printed based on rules



Rule Based Configuration functionality

General Features

- Automatically changes document finishing options based on rules
- Ability to prompt user before changing finishing options
- Option to set multiple rules per printer
- Different rules can apply to different users and groups
- User notified of cost savings from changing printing options via web page
- Cost savings made from changing job options recorded in database¹

Configurable Finishing Options

- Colour or black/white printing
- Single or double sided printing
- Multi position stapling
- Hole punch
- Z-Fold

Routing Criteria

- Cost of job
- Job name
- Total pages in job
- Number of copies
- Number of pages
- Job contains colour
- Job is printed single sided
- Originating PC name
- Time of day
- Size (in bytes)
- Printer status

Required software and modules

- uniFLOW Basic License (WE, BE, CE, EE)
- The Rule Based Configuration features require the Rules and Routing module

Software Operating System uniFLOW server

- Windows 2000/2003/2008
- Internet Information Server 5.0 (2000), 6.0 (2003), 7.0 (2008)
- Internet Explorer 5.5 or higher (Internet Explorer 7 recommended)

Software Operating System uniFLOW client (optional)

- Windows NT/2000/XP/2003/Vista
- Internet Explorer 5.5 or higher
- Macintosh MacOS 9.1, 9.2, 10.x