



UP TO  
**87%**  
ENERGY SAVINGS

Fluorescent batten light replacement

## Vico

Improved efficacy, Eco Dim switch & LiFePO4 battery

The Vico LED batten offers a quality T8 or T5 fluorescent batten replacement that will last for many years. It uses a series of quality Samsung LED modules that provide industry leading efficacy of up to 142 lumens per watt.

The Vico is an important addition to enLighten's growing range of intelligent LED lighting solutions for long lit low occupancy spaces, with a range that includes 2ft (600mm) 16W, 4ft (1200mm) 30W & 5ft (1500mm) 42W models.

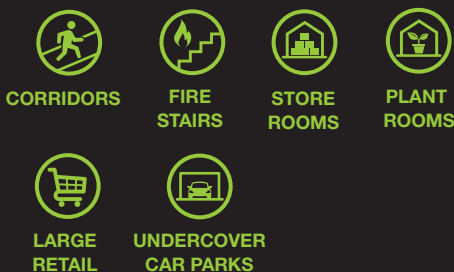
The new Eco Dim switch allows the batten to operate in half power mode, this results in halving the light output as well.



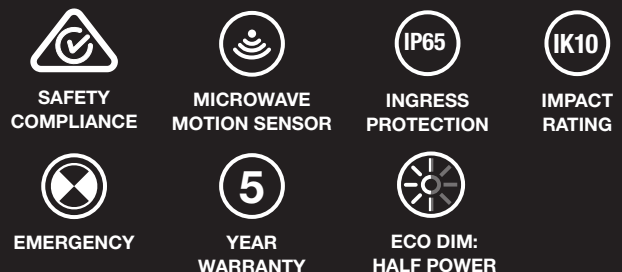
### OPTIONS AND BENEFITS

- **Emergency and non emergency** options available
- **Microwave sensor option** to maximise energy savings
- **Ease of installation** with screwless gear tray and large terminal blocks
- **2ft, 4ft and 5ft options available**
- **Environmentally friendly & stable** LiFePO4 battery
- **Eco Dim** - Switch to half power with a flick of a switch
- **IP65** - Ingress protection
- **IK10** - Highest level of impact resistance
- **Expected life >160,000hrs @L70** delivered by high quality Samsung LEDs
- **Robust & water-resistant** UV stabilised case
- **High luminaire efficacy** of up to 142 Lm/W
- **5 year warranty**

### APPLICATIONS



### FEATURES



**PRODUCT RANGE**

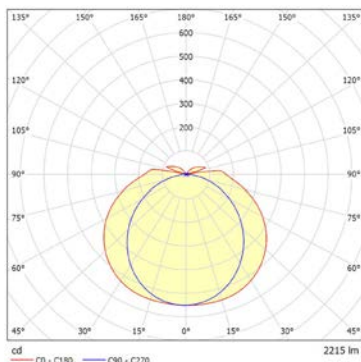
| Model #       | Description                     | Lumens (lm)<br>Full light | Rated Power (W) |         |
|---------------|---------------------------------|---------------------------|-----------------|---------|
|               |                                 |                           | Full light      | Standby |
| <b>BL06</b>   | 600mm standard                  | 2215                      | 16W             | N/A     |
| <b>BL06S</b>  | 600mm with MW sensor            | 2215                      | 16W             | 5W      |
| <b>BL06E</b>  | 600mm emergency                 | 2215                      | 16W             | N/A     |
| <b>BL06ES</b> | 600mm emergency with MW sensor  | 2215                      | 16W             | 5W      |
| <b>BL12</b>   | 1200mm standard                 | 4220                      | 30W             | N/A     |
| <b>BL12S</b>  | 1200mm with MW sensor           | 4220                      | 30W             | 7W      |
| <b>BL12E</b>  | 1200mm emergency                | 4220                      | 30W             | N/A     |
| <b>BL12ES</b> | 1200mm emergency with MW sensor | 4220                      | 30W             | 7W      |
| <b>BL15</b>   | 1500mm standard                 | 5710                      | 42W             | N/A     |
| <b>BL15S</b>  | 1500mm with MW sensor           | 5710                      | 42W             | 10W     |
| <b>BL15E</b>  | 1500mm emergency                | 5710                      | 42W             | N/A     |
| <b>BL15ES</b> | 1500mm emergency with MW sensor | 5710                      | 42W             | 10W     |

**TECHNICAL INFORMATION**

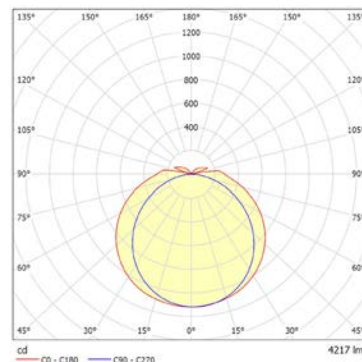
| Optical                             |   |
|-------------------------------------|---|
| Light source                        | Samsung LEDs  |
| Lumen output                        | 2215 - 5710 lumens  |
| CRI                                 | Ra >80  |
| CCT                                 | 4000K, 5000K standard and 5700K available on request                |
| Electrical                          |   |
| Power consumption                   | 16W - 42W full light output   |
| Operating frequency                 | 50/60Hz   |
| Operating voltage range             | 220- 240V AC  |
| Emergency light                     |   |
| Battery rating                      | 6.4V 3000 mAh LiFePO4   |
| Discharge time                      | 90 minutes  |
| Environmental                       |   |
| IP rating                           | IP65  |
| Impact rating                       | IK10  |
| Weight                              | 600mm - 1.8kg, 1200mm - 2.9kg, 1500mm - 3.4kg                       |
| Ambient temperature range           | -25°C to +40°C (standard models)<br>0°C to +40°C (emergency models) |
| Material Composition (body)         | Polycarbonate, UV stabilised  |
| Material Composition (diffuser)     | Polycarbonate, UV stabilised  |
| Expected Lifespan                   | >160,000 hours @L70   |
| Controls - Optional                 |   |
|                                     | Integrated microwave motion sensor                                  |
| Microwave sensor range              | 360 deg; max 8m (adjustable)  |
| Microwave sensor operating interval | 5 sec to 10 min (default setting 30 sec)                            |
| Warranty*                           |   |
|                                     | 5 years (battery 2 year)  |

Data subject to change without notice  
\* Refer to warranty policy

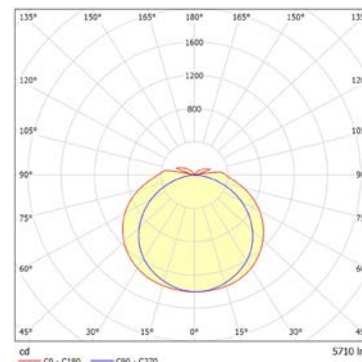
**PHOTOMETRICS**



Model: BL06

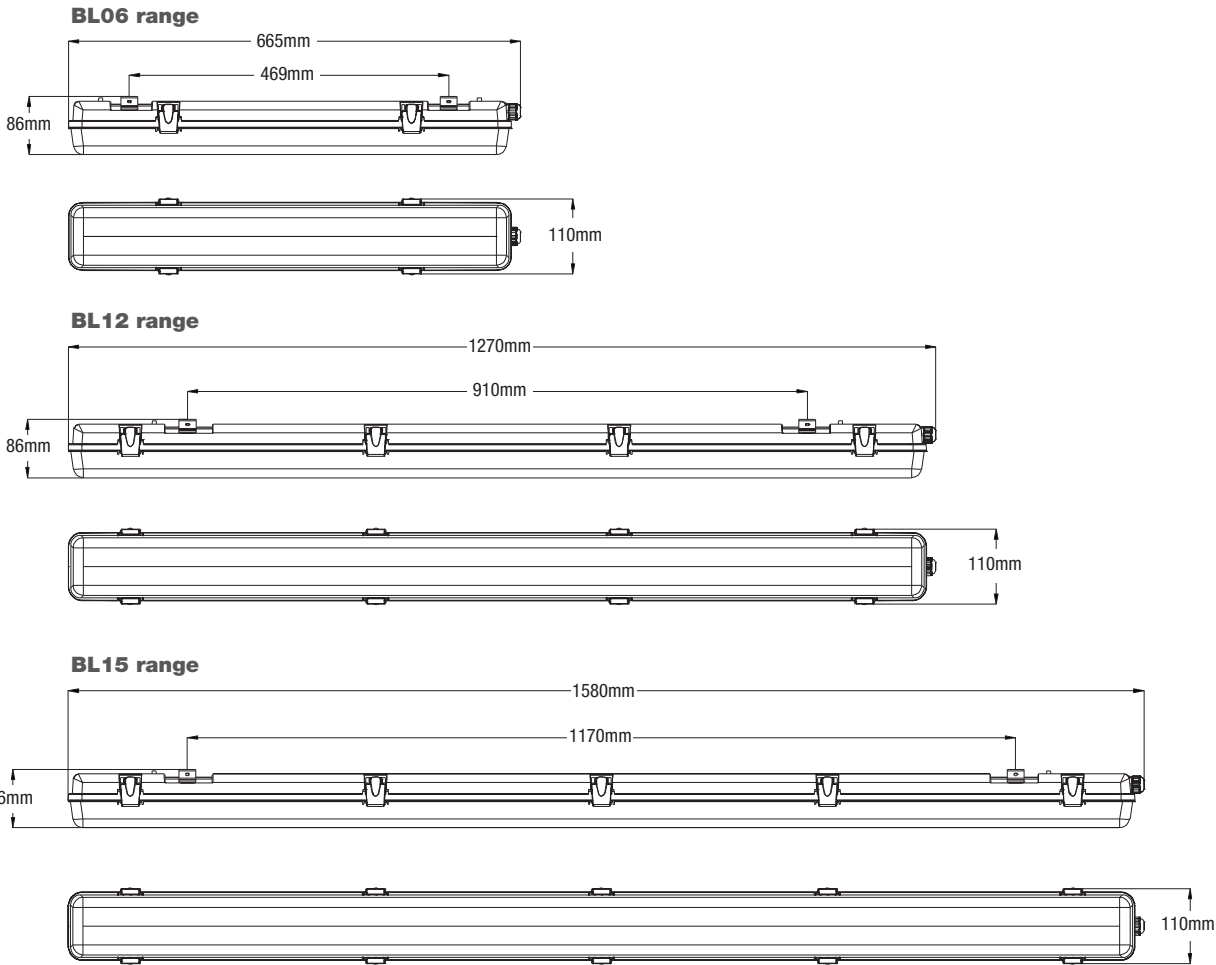


Model: BL12



Model: BL15

## DIMENSIONS



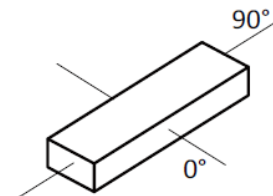
## OPTIONAL CONTROLS

Optional microwave sensor enables the light fitting to operate on a standby level of light output (20%) in both non-emergency and emergency models. On detection of movement, the light will switch to full power (100%) before returning to standby light output, after a set period of time, i.e. 5s, 30s, 3min, 10min. The fittings can then switch off after 90s/3mins or remain on standby.

The Vico can now be easily switched to half power mode via an internal switch which reduces light output to half and saves energy.

## EMERGENCY CLASSIFICATION

| Model#         | C0  | C90 |
|----------------|-----|-----|
| BL06E / BL06ES | D80 | D32 |
| BL12E / BL12ES | D63 | D40 |
| BL15E / BL15ES | D63 | D40 |



## COMPLIANCE

The Vico batten range meets or exceeds all relevant standards and regulatory requirements.

For a full compliance and testing list visit [www.enlighten.com.au](http://www.enlighten.com.au). IES files, warranty, installation and product guides are also available for download.

Sold nationally through major electrical wholesalers.



