

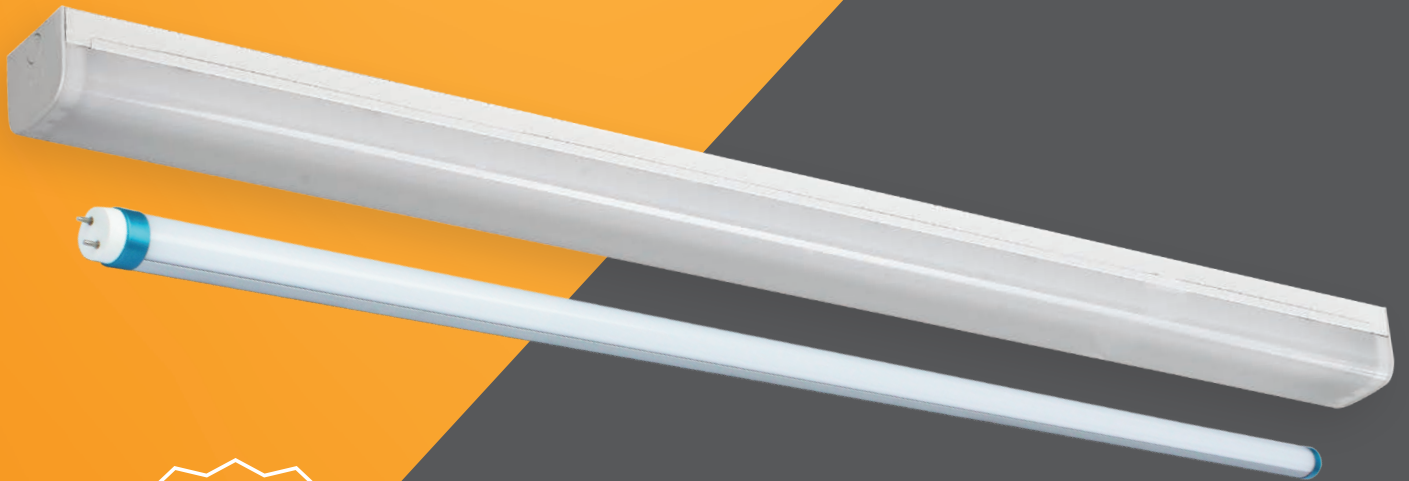
AT8B-I20-D-S (Single)
AT8B-I20-D-T (Twin)



ELITE TUBE BATTEN - IK08

SAVE ON FUTURE MAINTENANCE BY USING BATTENS WITH REPLACEABLE LAMPS

- Flicker-free replaceable-lamps
- 5 year warranty (7 years for registered projects)
- Surge protection, heat sinks, and Rubycon caps mean our lights last up to 5x longer



BY USING THE LATEST CHIPS OUR
LEDS USE **20% LESS POWER** THAN
COMPETITOR BRANDS. THIS MEANS
BIGGER POWER SAVINGS FOR YOU

MOST LED BATTENS
DON'T HAVE
REPLACEABLE PARTS.

OURS DO.

THIS MEANS LESS
WASTE, AND LESS
MAINTENANCE COSTS
FOR YOU.

SPECIFICATIONS

POWER	240V AC
SOURCE LUMENS	1,900 (Single) / 3,800 (Twin)
CCT	4000K / 6000K
AMBIENT TEMPERATURE	-20°C - 50°C
CHIP LIFESPAN	120,000hrs (L70 B50)
DIMENSIONS	1234mm L x 90mm W x 70 mm H
EMERGENCY CLASSIFICATION	D50
WARRANTY	7 Years
POWER FACTOR	> 0.92
BEAM ANGLE	> 120°
IK RATING	IK08
IP RATING	IP20
WATTAGE	15W (Single) / 30W (Twin)
CRI (RA)	> 80
SDCM (COLOUR MATCHING)	< 4
THD	< 15%
REPLACEABLE TUBES	Yes
FLICKER FREE	Yes
CAPACITOR	Rubycon
IC	Silergy

CERTIFICATIONS & STANDARDS

ISO 9001:2008, ISO 14001:2004, AS/NZ 60598.2, SAA, RCM/C-Tick, RoHS, LM-79-08, LM-80-08



FluoroCycle



PRODUCT STEWARDSHIP
Australian Government Accredited

CALL US ON (07) 3147 8783
INFO@AUSTEPLIGHTING.COM.AU

AUSTEPLIGHTING.COM.AU

AT8B-IP65-120-D-S (Single)
AT8B-IP65-120-D-T (Twin)



ELITE TUBE BATEN - IP65

SAVE ON FUTURE MAINTENANCE BY USING BATTENS WITH REPLACEABLE LAMPS

- Flicker-free replaceable-lamps
- 5 year warranty (7 years for registered projects)
- Surge protection, heat sinks, and Rubycon caps mean our lights last up to 5x longer



BY USING THE LATEST CHIPS OUR
LEDS USE **20% LESS POWER** THAN
COMPETITOR BRANDS. THIS MEANS
BIGGER POWER SAVINGS FOR YOU

MOST LED BATTENS
DON'T HAVE
REPLACEABLE PARTS.

OURS DO.

THIS MEANS LESS
WASTE, AND LESS
MAINTENANCE COSTS
FOR YOU.

SPECIFICATIONS

POWER	240V AC
SOURCE LUMENS	1,900 (Single) / 3,800 (Twin)
CCT	4000K / 6000K
AMBIENT TEMPERATURE	-20°C - 50°C
CHIP LIFESPAN	120,000hrs (L70 B50)
EMERGENCY CLASSIFICATION	D50
WARRANTY	7 Years
POWER FACTOR	> 0.92
BEAM ANGLE	> 120°
IK RATING	IK09
IP RATING	IP65
WATTAGE	15W (Single) / 30W (Twin)
CRI (RA)	> 80
SDCM (COLOUR MATCHING)	< 4
THD	< 15%
REPLACEABLE TUBES	Yes
FLICKER FREE	Yes
CAPACITOR	Rubycon
IC	Silergy

CERTIFICATIONS & STANDARDS

ISO 9001:2008, ISO 14001:2004, SAA • RCM/C-Tick, RoHS, TUV, LM-79-08, LM-80-08



FluoroCycle



PRODUCT STEWARDSHIP
Australian Government Accredited

CALL US ON (07) 3147 8783
INFO@AUSTEPLIGHTING.COM.AU

AUSTEPLIGHTING.COM.AU

AT8B-G-I20-D-S (Single)
AT8B-G-I20-D-T (Twin)



GENERIC TUBE BATEN

SAVE ON FUTURE MAINTENANCE BY USING BATTENS WITH REPLACEABLE LAMPS

- Wide body for make good of existing lights
- 3 year warranty (5 years for registered projects)
- Replaceable lamps for easy maintenance



BY USING THE LATEST CHIPS OUR
LEDS USE **20% LESS POWER** THAN
COMPETITOR BRANDS. THIS MEANS
BIGGER POWER SAVINGS FOR YOU

MOST LED BATTENS
DON'T HAVE
REPLACEABLE PARTS.

OURS DO.

THIS MEANS LESS
WASTE, AND LESS
MAINTENANCE COSTS
FOR YOU.

SPECIFICATIONS

POWER	240V AC
SOURCE LUMENS	1,800 (Single) / 3,600 (Twin)
CCT	4000K / 6000K
AMBIENT TEMPERATURE	-20°C - 50°C
CHIP LIFESPAN	50,000hrs (L70 B50)
DIMENSIONS	1230mm L x 69mm W x 90 mm H 1230mm L x 124mm W x 90 mm H
EMERGENCY CLASSIFICATION	D50
WARRANTY	5 Years
POWER FACTOR	> 0.9
BEAM ANGLE	> 120°
IP RATING	IP20
WATTAGE	16W (Single) / 32W (Twin)
CRI (RA)	> 80
SDCM (COLOUR MATCHING)	> 5
REPLACEABLE TUBES	Yes

ASK ABOUT OUR SISTER PRODUCT THE ELITE TUBE BATTEN,

Which comes with 120,000hr L70 flicker-free tubes and 7 year warranty.



FluoroCycle



PRODUCT STEWARDSHIP
Australian Government Accredited

CALL US ON (07) 3147 8783
INFO@AUSTEPLIGHTING.COM.AU

AUSTEPLIGHTING.COM.AU

AT8B-F-120-D-S (Single)
AT8B-F-120-D-T (Twin)



ELITE TUBE BATTEN - F SERIES

SAVE ON FUTURE MAINTENANCE BY USING
BATTENS WITH REPLACEABLE LAMPS

- Flicker-free replaceable-lamps
- 5 year warranty (7 years for registered projects)
- Surge protection, heat sinks, and Rubycon caps mean our lights last up to 5x longer



BY USING THE LATEST CHIPS OUR
LEDS USE **20% LESS POWER** THAN
COMPETITOR BRANDS. THIS MEANS
BIGGER POWER SAVINGS FOR YOU

MOST LED BATTENS
DON'T HAVE
REPLACEABLE PARTS.

OURS DO.

THIS MEANS LESS
WASTE, AND LESS
MAINTENANCE COSTS
FOR YOU.

SPECIFICATIONS

POWER	240V AC
SOURCE LUMENS	1,900 (Single) / 3,800 (Twin)
CCT	4000K / 6000K
AMBIENT TEMPERATURE	-20°C - 50°C
CHIP LIFESPAN	120,000hrs (L70 B50)
DIMENSIONS	1230mm L x 69mm W x 90 mm H 1230mm L x 124mm W x 90 mm H
EMERGENCY CLASSIFICATION	D50
WARRANTY	7 Years
POWER FACTOR	> 0.92
BEAM ANGLE	> 120°
IP RATING	IP20
WATTAGE	15W (Single) / 30W (Twin)
CRI (RA)	> 80
SDCM (COLOUR MATCHING)	< 4
THD	< 15%
REPLACEABLE TUBES	Yes
FLICKER FREE	Yes
CAPACITOR	Rubycon
IC	Silergy

CERTIFICATIONS & STANDARDS

ISO 9001:2008, ISO 14001:2004, AS/NZ 60598.2, SAA, RCM/C-Tick, RoHS, LM-79-08, LM-80-08



FluoroCycle



PRODUCT STEWARDSHIP
Australian Government Accredited

CALL US ON (07) 3147 8783
INFO@AUSTEPLIGHTING.COM.AU

AUSTEPLIGHTING.COM.AU