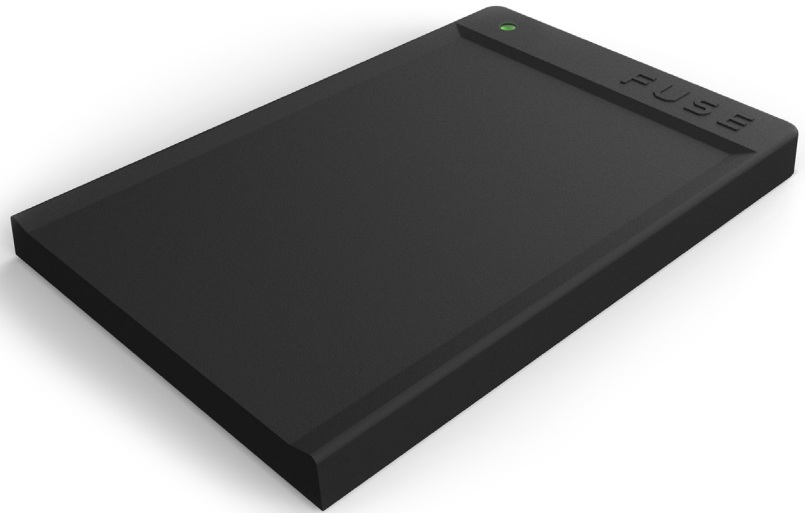


FUSE

CARD CHARGER, PROGRAMMER
AND ENROLLMENT SUPPORT



FUSE Manager Lite

The FUSE Manager Lite is a companion product for FUSE Biometric Cards for access control. The Manager Lite is used to charge the cards and offers user interface for biometric enrollment. In addition, it is used for various setup and configuration tasks performed on FUSE cards prior to being issued to users. The FUSE Manager Lite consist of a low-profile USB desktop device and a matching Windows application.

- Provides energy through NFC field to charge batteries inside the cards
- User interface for enhanced enrollment experience
- Enables set-up and programming prior to usage
- Incorporates a powerful two-way secure NFC channel for a password-protected communication with the cards
- Not card specific, can be used with multiple cards

FUSE

CARD CHARGER, PROGRAMMER
AND ENROLLMENT SUPPORT

PRODUCTS IN SCOPE

Description	Variant	Product number
FUSE Manager Lite	Access Control	FID-CC1-V1

SPESIFICANTIONS

Power Source	Standard USB
Desktop Device Dimensions	L102 x W64 x H8mm, (Card jig: L85.60 × W53.98 × H0.78 mm)
Operational Frequency	13.56 MHz
RFID Interface	NFC Type-IV (password protected)
Operating Temperature	(0° to 50° C) (32° to 122° F)
Storage Temperature	(-20° to 70° C) (-4° to 158° F)
Compatible Cards	FID-MC-G1-V1, FID-EV2-G1-V1, FID-iC-G1-V1