



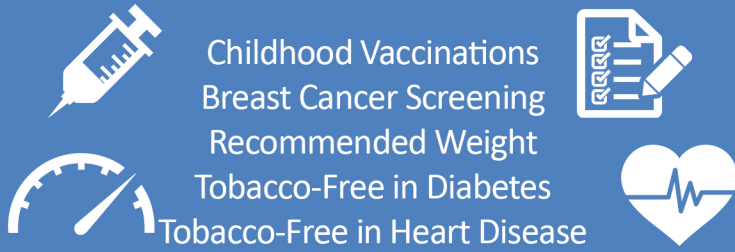
WISCONSIN COLLABORATIVE *for* HEALTHCARE QUALITY

2019 Wisconsin Health Disparities Report

Purpose

- ✓ Identify where substantial disparities in health outcomes and care exist in Wisconsin
- ✓ Accelerate programs working to eliminate disparities in Wisconsin
- ✓ Engage stakeholders of all backgrounds to work collectively to reduce disparities

American Indian/Alaska Native



Black



American Indian and Black populations experienced multiple substantial disparities across many measures

- Consider addressing root causes of health such as social & economic factors, with focused efforts on selected measures

Hispanic/Latino



White



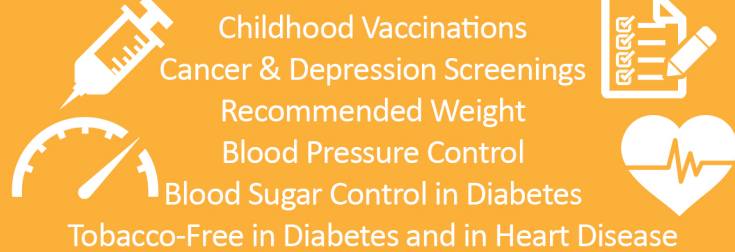
Asian/Pacific Islander



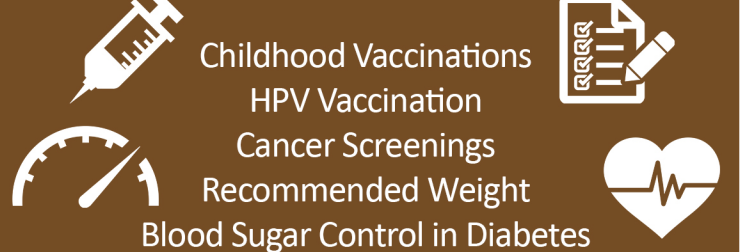
Hispanic/Latino, White, and Asian/Pacific Islander populations experienced fewer substantial disparities

- Consider targeting selected measures with focused efforts, in addition to root causes when indicated

Medicaid Insurance



Uninsured



Those on Medicaid or Uninsured experienced multiple substantial disparities across many measures

- Consider addressing root causes of health such as social & economic factors, with focused efforts on selected measures

Commercial Insurance



Medicare Insurance



Those on Commercial insurance or Medicare experienced fewer substantial disparities

- Consider targeting selected measures with focused efforts, in addition to root causes when indicated



VIEW THE REPORT
www.wchq.org/Disparities.php



VIEW THE REPORT APPENDIX
www.hipxchange.org/WCHQDisparities