



1117 Manhattan Avenue



1117 Manhattan Avenue

2,500sf

PRICING

Available upon request

FRONTAGE

25'

POSSESSION

Immediate





1117 Manhattan Avenue

2,500sf storefront with pre-war details on Greenpoint's main retail corridor and adjacent to the waterfront luxury developments at the Greenpoint Landing Promenade.





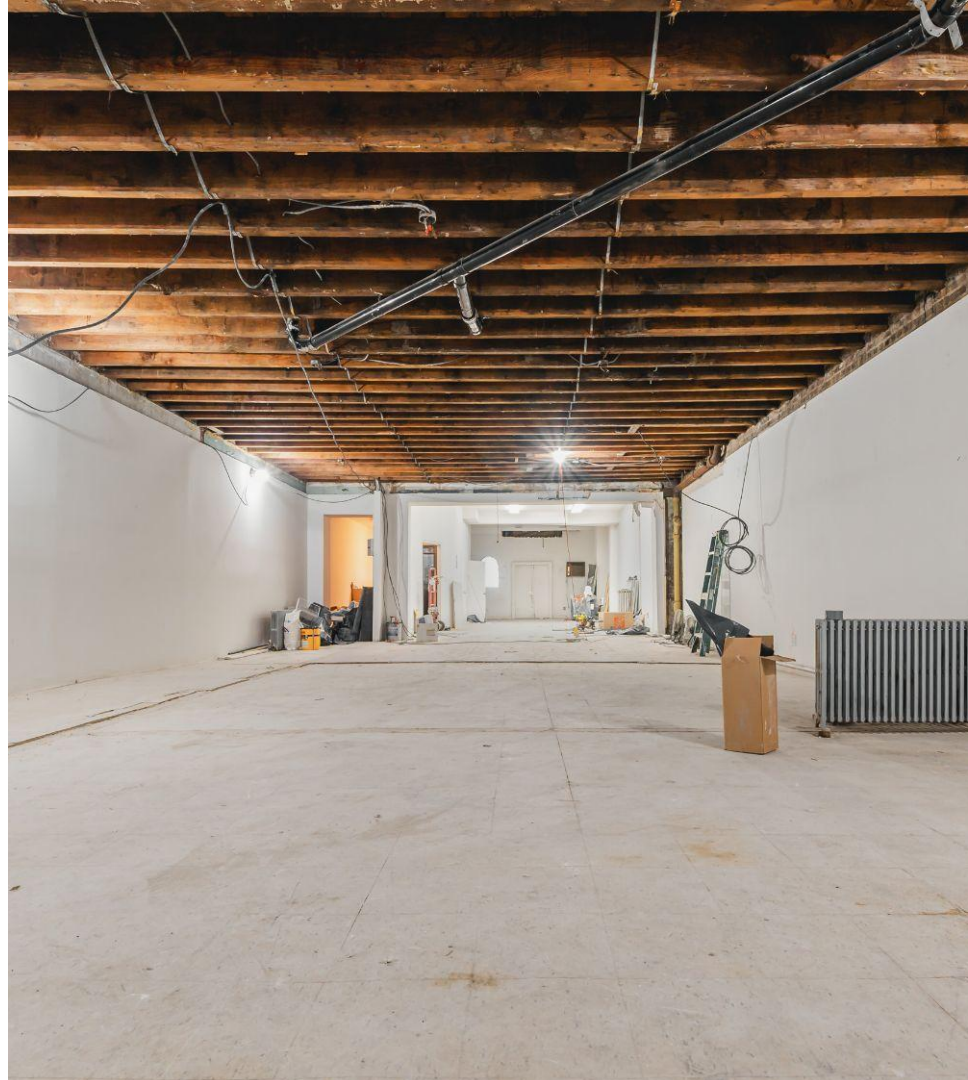
1117 Manhattan Avenue

With a fully-open box layout featuring 25' of frontage, a single-story rear half with easy venting capability, and ample electric/gas available; this space is primed and ready for any modern Food & Beverage, retail, or studio concept suited to cater to Greenpoint's young professional scene.

Basement
TI offered
Water available

Gas available
SLA applicable
Foot traffic

All uses Considered
Single-story portion

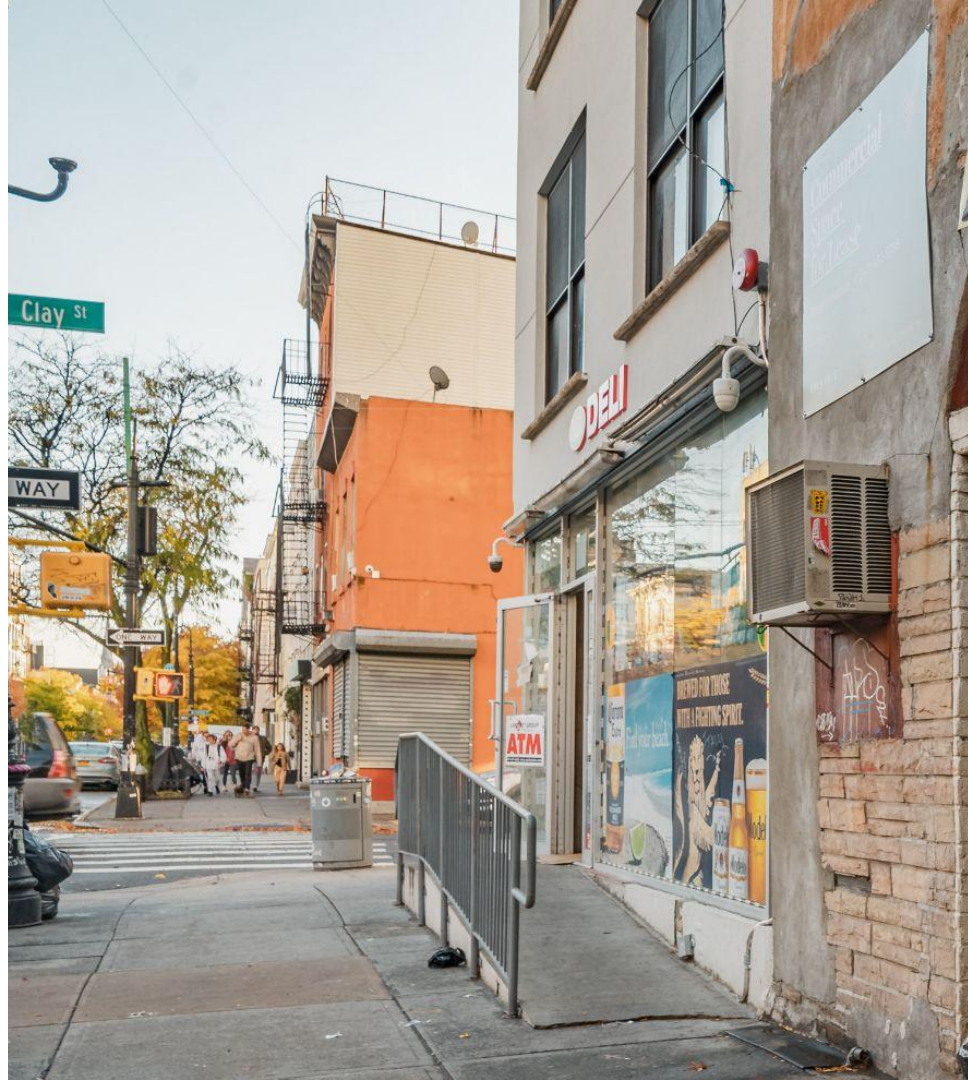






Surrounds

Enjoy robust foot-traffic from neighboring Blue Slip luxury towers, au courant Box House Hotel, the Brooklyn Expo Center, and the re-imagined Transmitter Park; and share success with renowned neighboring standouts Esme, Le Fanfare, Chez Ma Tante, Paulie G's, St Vitus, and Glasserie. One block from the Pulaski Bridge (quick 405 access), a straight shot to the Manhattan Ave G, and a short stride to Greenpoint Playground, Newtown Barge Park, and the Greenpoint Esplanade.





Begin.

John Burnham
Managing Principal

+1 (917) 972-1750 (o)

+1 (917) 708-2018 (c)

jburnham@valkyrie.nyc

