

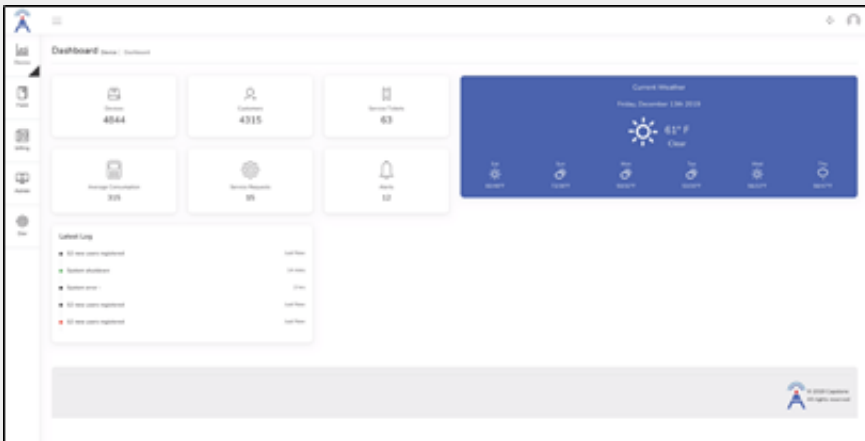
# IntelliH2O® Water Management Application (WMA)



## PRODUCT OVERVIEW

The IntelliH2O® Water Management Application (WMA) is a robust cloud-based water management solution that fully Integrates with the suite of Diehl meters. The application may be accessed via desktop, laptop or mobile device and offers an industry-leading suite of user-friendly features. The utilities will be able to set permission for departments or personnel to give access or limit functionality (i.e restriction on billing or personal info).

## DASHBOARD



From the Capstone WMA Dashboard utilities can easily navigate to devices, customers, billing, service tickets and any alerts that the system might have. This graphical user interface (GUI) makes an everyday task like creating customers one click away. Along with a high-level overview of the system, you get a granular look of activity through the most recent logs.

## DEVICE MANAGEMENT

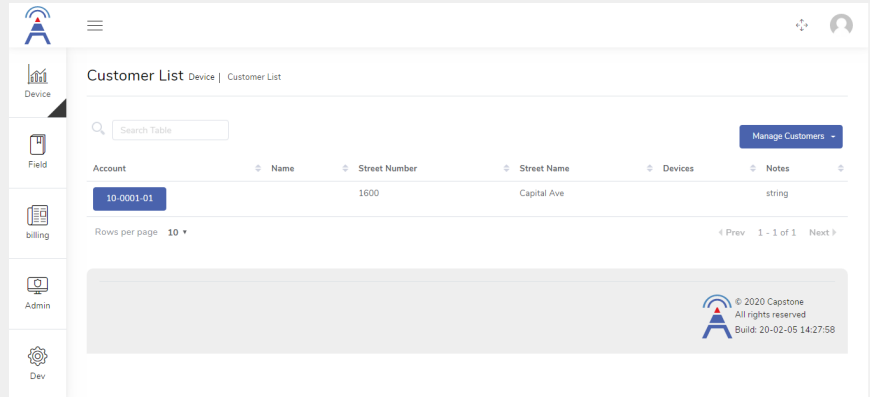
The utility employees will need to be able to rapidly manage the devices for the entire entity in a simplistic way. With these key features, information is trackable and organized to help efficiently run the utility.

- Schedule management
- Grouping of devices for billing or reporting purposes
- Overall system health
- Mapping to show device location and overall system health

## W A T E R M A N A G E M E N T A P P L I C A T I O N

# CUSTOMER MANAGEMENT

Utilities can manage customer data pertaining to the residents consumption of water such as account numbers, account status, and devices. This data is used to merge device consumption readings with billable customer data.



The screenshot shows a web application interface for managing customer data. The page title is "Customer List" and it includes a search bar, a table with columns for Account, Name, Street Number, Street Name, Devices, and Notes, and a "Manage Customers" button. The table contains one row with the following data: Account: 10-0001-01, Name: (blank), Street Number: 1600, Street Name: Capital Ave, Devices: (blank), Notes: string. The interface also features a sidebar with navigation icons for Device, Field, billing, Admin, and Dev, and a footer with copyright information: © 2020 Capstone, All rights reserved, Build: 20-02-05 14:27:58.

Account	Name	Street Number	Street Name	Devices	Notes
10-0001-01		1600	Capital Ave		string

# BILLING



Typically, municipalities will run separate software for residential bill generation. The platform will be required to interface with these systems using primarily fixed-width files but where applicable an API is preferred. The meter system's role in this relationship is to generate billing details for a given date range that can then be populated into the billing file.

# ALERTS

Alerts serve both the end resident and the municipality with the intent to alert both entities of potential issues in the system.

- Low/High Temperature
- Device Failure
- Constant Flow/Leak Detection
- Low Battery
- Excessive Usage
- No Usage

