

**HORNE
BROS**



Builder Joiners Glaziers

- Building/Alterations
- Joinery
- Design Work
- Automotive Glass

- Glass
- Kitchens
- Concrete Cutting

Old Station Road, Ohakune. Phone 06-385-8444



**Lions
thank
their
farmers
P3**



**Kerri's
cancer
help
P5**



**New
chair for
Ngati
Rangi
P7**



**High
time
for high
tea
P8**

Ruapehu welcomes end of 3-waters reform uncertainty

Ruapehu's mayor Don Cameron said that Ruapehu welcomed the certainty that Government's announcement that participation in reform of the 3 waters sector would be mandatory for all councils.

"Now that Government has taken the need for consultation on the reforms off the table, we can focus our attention on the transition and planning for what our future roles and responsibilities will look like without 3 waters," he said.

"We also welcome the establishment of the working groups to address the outstanding issues raised by councils with the proposed model specifically around the concerns about ownership, local voice and control of water assets.

"It is pleasing to see that the proposed working groups will also undertake work on legislation and policies to ensure entity support for council's growth aspirations and the unique requirements of rural community water schemes which were other areas of concern to Ruapehu."

Mr Cameron noted that rural councils

with small rating bases always had a lot to gain financially from the proposed reforms.

"In Ruapehu's case it was estimated that we needed to spend upwards of \$600m on 3 waters infrastructure over the next 30-40 years.

"Over the next ten years we were facing our debt climbing by over \$65m to address drinking water compliance standards alone.

"Being freed from the debt implications this level of spending will entail, while making good use of our \$16.4m share of the \$2.5b 'better off-not worse off' package, should provide Council with the financial capability to start addressing some of our communities' growing well-being needs in areas such as housing.

"In the interim we will continue to work constructively alongside Government and the sector to ensure the best possible outcomes for our communities from the reform process."



Antika Wood and Sarah Delbecque were outside Liquorland in Ohakune last week, collecting for the Breast Cancer appeal - all dressed in pink to fit the theme. The local appeal raised \$846. Covid-19 restrictions have severely affected the Pink Ribbon Appeal for the second year, but people can still donate by going to pinkribbonappeal.org.nz or scanning the QR code.



Bayleys has the network and know-how to get the result you want.

Contact your local Bayleys Ruapehu team today to find out more about the benefits of listing with Bayleys.

Bayleys Ruapehu

06 385 0170 | bayleys.co.nz

BARTLEY REAL ESTATE LIMITED, BAYLEYS, LICENSED UNDER THE REA ACT 2008



ALTOGETHER BETTER

Residential / Commercial / Rural / Property Services

New 'face and voice' of Whanganui River

By Moana Ellis, Local Democracy Reporter

The Government and Whanganui River iwi have jointly appointed a new Pou Tupua to act and speak on behalf of Te Awa Tupua, the special status accorded to the Whanganui River.

Environment Minister David Parker and Ngā Tāngata Tiaki o Whanganui last week named Keria Ponga as the new appointee. She joins Turama Hawira who has held the two-person office since 2017 with Kahurangi Dame Tariana Turia. Dame Tariana stepped down earlier this year.

The role of the Pou Tupua is to promote, protect and advocate for the status of Te Awa Tupua.

The Minister acknowledged Dame Tariana for her contribution in the role of Te Pou Tupua.

The depth of experience and knowledge that Dame Tariana has contributed has been invaluable in this inaugural term. Together with the iwi of Te Awa Tupua, I acknowledge her leadership and dedication to upholding Tupua te Kawa," Parker said.

Ngā Tāngata Tiaki o Whanganui chair Sheena Maru said the appointees will be the face and voice of Te Awa Tupua for the next three years. The office was established through the Te Awa Tupua (Whanganui River Claims Settlement) Act 2017, which recognises the river as a living and indivisible whole, comprising all its physical and metaphysical elements from the mountains to the sea.

Maru said there is much work ahead for the Pou Tupua and river iwi to support understanding of what this means.

The story of Te Awa Tupua, including the treaty claims



that led to the river becoming the first in the world to gain legal rights of personhood in 2017, is central to the New Zealand Pavilion offering at Expo 2020 Dubai. The pavilion was designed in partnership with Whanganui River iwi and at the end of September a small group from river iwi carried out a dawn ritual in Dubai to give rise to the mouri of the exhibition. Next month, Maru will travel to Dubai to maintain the Whanganui River iwi relationship, uphold the mouri (life principle) and guide understanding of the exhibition and the intent of the Awa Tupua legislation.

This has been a ground-breaking settlement that a lot of the world is looking towards," Maru said.

"At the heart of the settlement framework is legal recognition of the interconnectedness of the Whanganui River, its peoples, and its resources but there is much more work to be

done to foster understanding to protect and enhance the health and wellbeing of the Te Awa Tupua and its indivisible whole, incorporating its tributaries.

"We've got to start to invest ourselves in building our people to understand what this means and to know how to pull the levers in particular places, as well as ensuring that the likes of our regional and local government, other Government ministries and NGOs understand what can be achieved through working together through Tupua te Kawa, our innate values and principles."

Whanganui kaumatua John Niko Maihi said the Pou Tupua role was important to upholding Tupua te Kawa on behalf of the Whanganui River.

The iwi of Te Awa Tupua remain steadfast in the belief that our people are intrinsically connected to the health and wellbeing of the whole Awa, its mouri and its mana," Maihi said.

"It is with that in mind that we are assured that both [appointees] shall perform the role of Te Pou Tupua given their knowledge and experience in both worlds."

Maru said the appointments were made jointly by the Crown and iwi with interests in the Whanganui River.

"They symbolise both the partnership between iwi and the Crown and the Crown's ongoing responsibility to uphold Te Awa Tupua. These appointments support a strong future for the Whanganui River and its communities," Maru said.

Ponga, together with her late husband Royce Te Rangitautahi Ponga, has been central to many key efforts for the Whanganui River. Born and raised at Pūtiki on the banks of the river, alongside her elders, she has worked for 40 years in community development, private enterprise, business mentoring and economic development and has held governance and leadership roles in several organisations, includ-



Keria Ponga.

ing Ātihaū-Whanganui Incorporation and the Sarjeant Gallery Trust.

Hawira, a tikanga and cultural advisor, iwi historian and experienced educator, was mentored in the ritual practises of the Whare Wānanga o Aotearoa. He has been a trustee and director of hapū and iwi trusts and organisations, including Morikaunui Incorporation and as chair of the Ngā Rauru Iwi post settlement governance entity, and has presented research on behalf of claimants of the wider Whanganui-Ruapehu district, including in the Whanganui District Inquiry, WAI 903.

Because of Covid-19 measures, the necessary karakia to dedicate the new term of the Pou Tupua will be recited by individual iwi and hapū along the river, Maru said. A formal ceremony will be held when it is safe to do so.



Turama Hawira.

What's on round Ruapehu

Raetihi Christmas Carnival 11 December

Alzheimers Whanganui – Ohakune 29 November

Ski, Board & Bike
Cnr Ayr St & Goldfinch St, Ohakune
06-385-8433, tcbskiandboard.co.nz



Please email: ads@rupahebulletin.co.nz or call 06 385

8532 or if you have something to add to this column.

Eating out in the Ruapehu District

CYPRUS TREE

79 Clyde St, Ohakune

Ph: 06 385 8857

Contemporary café, bar and restaurant. Come and try our new small plates menu. Enjoy quality wine, craft beer, food and friendly service in our spacious, family friendly establishment. Fireside lounge and children's play area, cosy indoors or perfect alfresco dining with spectacular mountain views. A great place for casual get togethers or special occasions. Open 7 days, 4pm till late.

INDUSTRY BAR & GRILL

55 Clyde Street, Ohakune

Ph: 06 385 9006

Come on in and enjoy our delicious \$20 mains or try one of our new signature dishes. At Industry we welcome everyone to share some great times. To make a booking give us a call or message us on Facebook. Open 7 days from 4pm. www.industrybarandgrill.co.nz

KINGS BAR & RESTAURANT

3 Rimu St Ohakune Junction

Ph: 06 385 8648

Est in 1913, historic Kings offers an inviting menu by locally renown chefs, a great selection of boutique wines and is the exclusive venue to offer Ruapehu Brewing Company beers on tap. See our Facebook page for what's on. Open 7 days from 4pm.

POWDERKEG

Bottom of the mountain road

Ph: 06 385 8888

The iconic Powderkeg gives you that warm alpine feel with large open fires, hot mulled wine and a great craft beer selection. With over 30 years' commitment to service and good quality free range food. Follow us on instagram @powderkegbar for our weekly deals, parties and giveaways. Great breakfast and delicious brunch cocktails. Open 7am – 10.30am and reopening 3pm daily 7 days a week. See you at The Keg.

UTOPIA CAFÉ/RESTAURANT

47 Clyde St, Ohakune

Ph: 06 385 9120

Open 7 days from 7:30am – 4pm for all day breakfast and lunch. A cosy memorable atmosphere with a great range of yummy food and beverages, including regional famous Volcano coffee, Allgarnics juices, iced blended Mocha and chocolate, 7 kinds of smoothies. There is a function room too for meetings and special occasions. Speedy free WiFi! A perfect place for everybody!

2 • **RUAPEHU BULLETIN** 3 November 2021

Just a flying visit



We'll be carrying out helicopter Inspections of power lines in your area soon. Inspecting lines is critical to delivering you a safe, reliable service.

Flights are weather dependent and may change, see website for updates.

WHERE WE'RE FLYING:

- Ōhakune
- Tangiwhā

WHEN WE'RE FLYING:

November
2021

keeping you connected

0800 367 546
thelinescompany.co.nz

Job uptake

From Page 3

lack of suitable childcare or work commitments amongst other things.

Council chief executive Clive Manley said Council's civil defence capabilities and other resources were being made available to support the vaccination objectives.

"The hui has agreed to create three separate work groups focusing on developing plans to address community vaccination issues, iwi vaccination issues and the clinical response.

"These will be worked on over the coming week and will be reported back to the group at another hui on Friday next week," he said.

"Council was also re-branding our mobile iSite caravan that had been originally purchased to operate from the Park and Ride in National Park Village.

"Because of Covid-19 we have not been able to use it as planned and so we want to repurpose it to take information and vaccinations to where the people are."

The plan initially is to set the caravan up outside the Taumarunui New World and they want a second mobile solution for outside the 4 Square.

"If people are available to help with the vaccination drive in some way please come along to the hui next Friday 5 November at 9.30am in the Miriama Room (lower floor, Cossie Club)," invites Mr Manley.

Horizons adds two Māori wards

Two Māori wards will be added to the Horizons Regional Council table, after councillors unanimously adopted its final representation arrangements for the 2022 and 2025 local government elections.

Horizons Regional Council chair Rachel Keedwell says that Horizons' final representation arrangements include the current six general constituencies of Ruapehu, Whanganui, Manawatu-Rangitikei, Palmerston North, Taranaki and Horowhenua, plus two new Māori constituencies: Raki Māori (Māori North) and Tonga Māori (Māori South).

"The eight constituencies will be represented by 12 general and two Māori representatives," says Cr Keedwell.

"Following a change to the Local Electoral Act earlier this year, Council resolved to establish a Māori constituency or constituencies for the 2022 and 2025 local elections. This resulted in a full review of Council's representation arrangements."

The adoption of an initial representation arrangement proposal, which included two new Māori constituencies in addition to the current six general constituencies was publicly notified for submissions between September – October 2021.

In addition to the arrangements members of the public were also asked whether they agreed with the proposed names for the two Māori constituencies.

"Eleven submissions were received and considered before (the) final adoption."

Cr Keedwell says that an increase from 12 to 14 councillors will not equate to an increase in rates.

"While the funding to pay councillors

comes out of rates, central government sets the total amount that can be used for this. This set amount will remain the same, regardless of the number of councillors."

A public notice calling for appeals by persons or organisations that made a submission will now be issued. Any decisions on appeals will be made by the Local Government Commission (LGC).

Council's representation arrangements will be confirmed by the LGC by 10 April 2022. This will allow sufficient time for potential candidates to put their names forward for the elections late next year.

To be eligible to stand as a candidate for the Māori and general constituencies, a candidate must be a New Zealand citizen, enrolled as a Parliamentary elector anywhere in New Zealand, and nominated by two electors whose names are on the roll in the constituency the candidate is standing for.

Candidates do not have to be of Māori descent or enrolled on the Māori roll to stand for a Māori constituency. Anyone who is eligible can stand for election in the constituency they want to represent.

Candidates may not stand for more than one constituency in the region at the same time, so a candidate couldn't stand in both a general and a Māori constituency.

The roll a member of the public is registered on will determine which constituency they can vote in. If they are on the general roll they can vote in one of Horizons' general constituencies and if they are on the Māori roll they can vote in one Māori constituency.

North community work to drive vaccination uptake

With almost half of all eligible people in Taumarunui still to get their second Covid-19 shot, local iwi and community organisations are working together to get everyone possible fully vaccinated.

Representatives from local iwi, health-care, education, Council and others met at the Manunui Room in Taumarunui last week to agree an action plan on how to get this done.

The latest vaccination figures from the Waikato District Health Board show that only 52.6% of people have received both vaccination shots in Taumarunui.

For Maori, 37.8% have received both vaccination shots while for all other groups it was 65.5%.

The low 52.6% fully vaccinated number is in-line with national figures showing Ruapehu is second bottom in the country for double vaccinated people.

The hui discussed learnings from the first lockdown last year, including the importance of sharing information to help find and access the hard to get to, or isolated communities, as well how to best work with vaccine hesitant people.

Maxin Ketu from Ngāti Hāua Iwi Trust said it was important to recognise that there were a number of reasons besides mistrust of the vaccine as to why people may not be vaccinated including a lack of resources to get to a clinic, living in remote rural areas,

Turn to Page 2

Lions thank farmers for fundraising grazing



Ruapehu Lions Club members Fred Collett and Rene Haeberli, standing, are pictured with the Club's guests at a dinner on Saturday night, held to thank the farmers who have supported the Club with their cattle raising fundraising efforts. The farmers have supported the campaign by providing grazing for the Club's cattle, or in some cases, their own cattle. Funds raised from the campaign have helped support local squash player Jayden Bailey, Leukaemia support, Youth Suicide Prevention, Camp Quality, Orautoha School, and Lion International projects. The farmers are: Bernice and Glen Wilson; Shey and Tony McLean; Zoe and Hayden Todd; Dan Leary; Nic Leary; Carla and Hamish Blackburn; Kandy Mott; Tania and Greg Windle; Neil Whale; Graham Fraser; Rene Haeberli; Kerry Windle (cattle transport).

DOES YOUR COMMUNITY ORGANISATION NEED FUNDING?

Apply to the
Trustpower
Heartland
Community Fund

\$12,000
available
this round
★★★★★

Applications
open
1-30 NOVEMBER

DOWNLOAD AN APPLICATION FORM AT:
TRUSTPOWER.CO.NZ/HEARTLAND

**HEARTLAND
COMMUNITY
FUND**



In partnership with:
**KING COUNTRY
ELECTRIC POWER TRUST**



neate
architecture

New Houses Developments Alterations

Commercial Reclads Relocatables

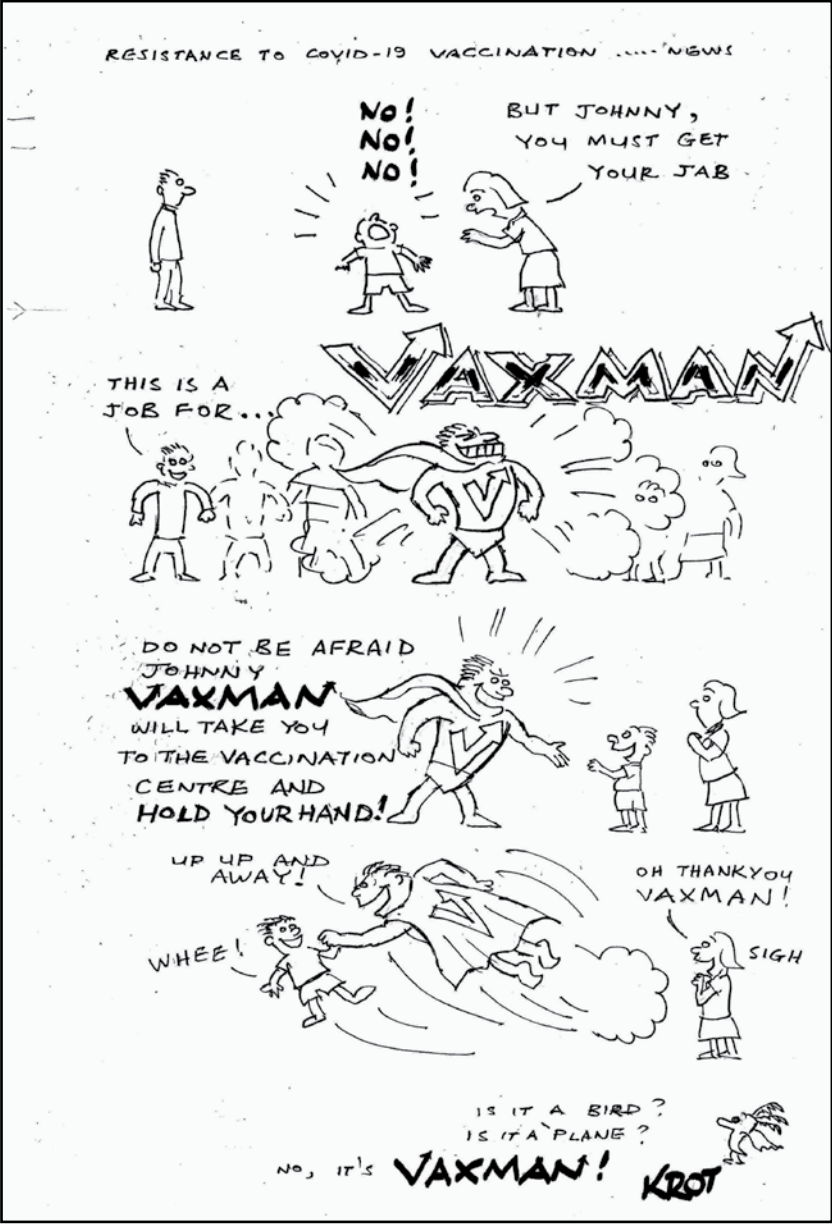
P: 06 777 3550

E: admin@neate.co.nz

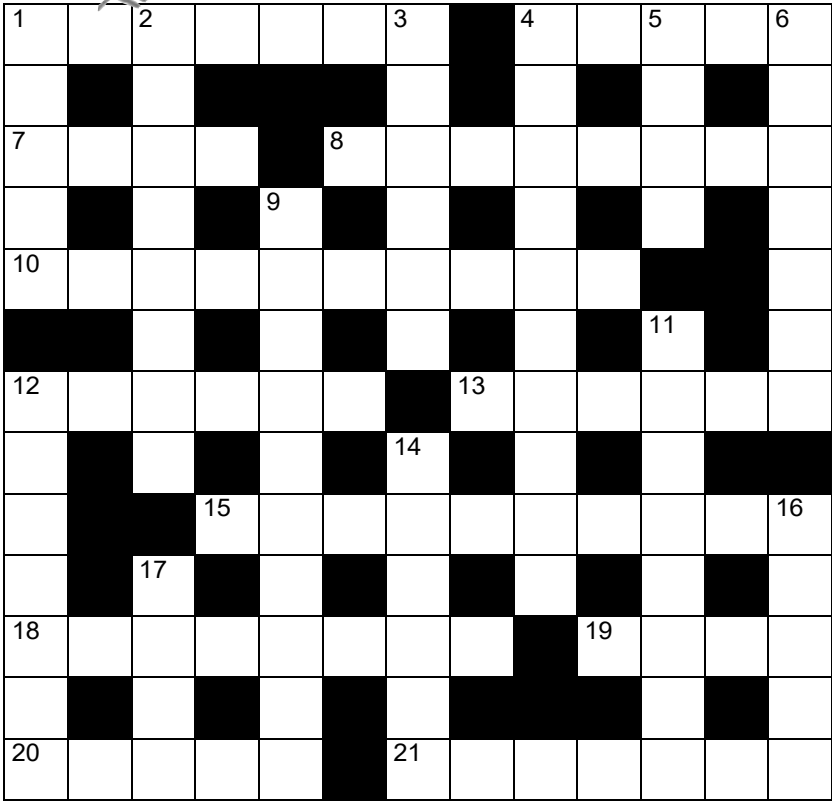
PO: Box 45 4660

Visit Us: <https://www.neate.co.nz/>





THE NZ CROSSWORD 1856



©THE PUZZLE COMPANY

Across

1. Illicit relationships (7)
4. Lubricated (5)
7. Depend (4)
8. Animal featured in a Hunterville statue (8)
10. Occupation or profession (4,2,4)
- 12/13. Dog breed featured in a statue beside Lake Tekapo (6,6)
15. Subject of a 6.5m statue in central Gore (5,5)
18. Scarcity (8)
19. Duo (4)
20. Baby discovered in bulrushes on the banks of the Nile (5)
21. Highest (7)

Down

1. Pointer (5)
2. Legend (8)
3. Sudden gust of wind (6)
4. Mildly unwell (3,2,5)
5. Manicured grass (4)
6. Morning to evening (7)
9. Uncomfortable facts (4,6)
11. Mythical city of gold (2,6)
12. Festival held in Alexandra every spring (7)
14. First name of former US president Eisenhower (6)
16. Fortune telling cards (5)
17. 60 painted replicas of these are found in the streets of Morrinsville (4)

Previous solution

Across: 1. Bogus, 4. Ignite, 9. Taringa, 10. Molar, 11. Even, 12. Collins, 13. Ute, 14. Icon, 16. Gig, 20. Apostle, 21. Chat, 24. Hyena, 25. Knock-up, 26. Papaya, 27. Torso.

Down: 1. Bather, 2. Gorse, 3. Sand, 5. Gambling, 6. Ill will, 7. Egress, 8. Sauce, 13. Unsteady, 15. Close-Up, 17. Wash up, 18. Gecko, 19. Stop-go, 22. Hiker, 23. Port.

Ian McKelvie 'can't abide' current Covid-19 response

Local member of Parliament Ian McKelvie supported the Government's Covid-19 response, but "can't abide" it now. He expresses this view in his latest column

• Like most New Zealanders I was fully supportive of the Government's initial approach to protecting New Zealand and New Zealanders from the health and economic implications of Covid-19. We were in uncharted territory and a united front was the best approach.

But I can't abide what's going on now.

The wheels have fallen off. The government's promise of open and honest communication is disingenuous and hypocritical. It's impossible to understand where they are taking us – more concerning – I don't think they actually know!

We have inconsistent and at times heart-breaking enforcement of the current Covid and MIQ restriction rules.

Meanwhile the Member of Parliament for Mt Albert, who happens to be New Zealand's Prime Minister Jacinda Ardern, hasn't been to Auckland or visited her electorate since before the start of the latest lockdown on 17 August.

What's more, her Government have managed to politicise everything from housing, water, employment, farming and the vaccination roll-out to race relations and

the environment.

For 11 long weeks, many New Zealanders but especially Aucklanders have suffered irreparable damage to their lives and livelihoods. Businesses have gone broke, people have lost their jobs or had to survive on a much lower income; thousands of senior students throughout New Zealand have left school to support their families, changing the course of their lives forever. The list goes on...

But the PM refuses to front. It's unacceptable. We all know people in Auckland, family, friends who are suffering. Those who are following the rules are becoming increasingly frustrated and angry at those who continue to flout them and halt progress. The Government's shift from Alert Levels to Traffic Lights is beyond confusing.

Then there's the implications for delayed healthcare and surgeries, which we're feeling here. Despite no current Covid cases and just one historic case in the greater region over the past year, MidCentral DHB cancelled 177 elective surgeries in the six weeks between 6 August and 26 September. At the same time the Whanganui DHB stopped 934 first specialist assessments and MidCentral 2152; along with 25 and 127 endoscopy procedures respectively. The long-term implications of delaying urgent medical care is concerning, and it's no exaggeration to say a matter of life and death in some cases.

All cold comfort for everyday New Zealanders who are just trying to get ahead.

Letters

A steady increase in property crimes is being countered with a high rate of Police clearance rates, thanks to good CCTV coverage and information from the community.

Waimarino Police Sergeant Lane Demchy said the string of property crimes started at Queens Birthday Weekend, when eight vehicles were stolen around Ohakune.

The offenders were apprehended and charged.

In July, several snowboards were stolen from Whakapapa and Tūroa ski areas, with the thieves based in Turangi arrested after information was provided by members of the public.

A series of burglaries in recent months in Clyde Street, Ohakune in September were resolved and the offenders charged.

Other burglaries are still being investigated.

In September, a 15-year-old visitor stole a car in Raetihi, then another in Ohakune. He and another local offender were arrested after they were caught breaking into another car in Ayr Street.

In October a local man was arrested for burglary to property in Clyde Street. He was held in custody after the offence.

"A combination of CCTV in Ohakune and Raetihi and the help of the public has seen the majority of these offences that have been occurring resolved after we've been able to identify the offenders so they can be held to account for their actions," said Sgt Demchy.

"We've been able to recover a lot of stolen property as well."

Sgt Demchy also had a warning for people to be aware that there have been some thefts of courier parcels from people's property. He said people should make arrangements with courier companies to leave parcels in a secure location.



ISSN 1170-1676 (print)

ISSN 1178-7406 (online)

Published by Ruapehu Media Ltd

Phone (06) 385 8532

Ruapehu's only locally owned weekly community newspaper. Established 1983.

Reaching homes every Wednesday in Ohakune, National Park, Raetihi, Waiouru and surrounding rural areas.

Publishing Editor: Robert Milne – robert @ ruapehubulletin.co.nz
Advertising Rep: Jude Chevin – ads @ ruapehubulletin.co.nz

Printed by Stuff Printers, Petone

Advertising Rates

Display		Classifieds
Casual	\$5.40 per col cm	Run-ons (16 words) \$10.00
300cm	\$4.32 per col cm	Extra words, 61c each
500cm	\$4.05 per col cm	Bold Display Classified \$4.87
1000cm	\$3.56 per col cm	
2500cm	\$3.24 per col cm	
5000cm	\$2.91 per col cm	

Preferred position 15% extra.

Advertising Deadline 5pm Friday
ALL RATES PLUS GST

Community and Emergency Services

Alzheimers Whanganui Inc

For support phone 06-345 8833

Email: admin@alzheimerswhanganui.org.nz

Budget Advice

Phone or text Noeline 027-259-5285, or phone 06-385-3253 and leave a message.

Cancer Society Whanganui

06 348 7402 or Kerri Dewson-Pratt 022 196 7355

Child, Adolescent and Sexual Health Nurse

06-385-5019

Child Youth and Family Service

0508-326 459 or 06-965-3539

Churches

Anglican, 06-385-4957. Baptist, a/h 06-385-3100. Catholic, 06-385-8858 or 027 606 5186. Gospel Chapel, 06-385-8453. Presbyterian, 06-388-0675 or 06-385-8708. Waiouru – duty chaplain 06-387-5599 ext 7031 or 021-493-692

Civil Defence

Andrew Chambers 07 895 8188, 021 247 7340

CLAW community free legal advice

Whanganui 06-348-8288

Disability Resources Centre (Whanganui)

Vivienne Bird, 0800-789-654

Doctors: In an emergency call 111

Ruapehu Health Ltd 06-385-4211

Information Centres

Ohakune 06-385-8427, Raetihi 06-385-4805

IRD appointments

06-901-6162

Ngati Rangī Community Health Centre

06-385-9580

Plunket Society

Plunket Nurses 06-385-8265, Car Seats 06-385-5019

Police and Search & Rescue Emergency, call 111

Ohakune 06-385-0100, Raetihi 06-385-4002, Waiouru 06-387-6884, Military Police 0800-50-11-22

Red Cross

Shelagh Buck 06-385-8610

Rotary, Raetihi - Ohakune

027-344-5669

Ruapehu REAP

0800-00-REAP (0800-00-7327)

Ruapehu Maori Wardens

Rangi Bristol 027-442-4593

St John

In an emergency call 111

Taumarunui Counselling Services

For confidential counselling in Waimarino phone 07-895-6393

Victim Support Contact Centre

0800 842 846

Waimarino Cancer Society

Co-ordinator 06-385-3404, 0204-080-4905

Waimarino Health Care Centre

Raetihi 06-385-5019

Women's Refuge

0800-800-4-refuge 0800-4-733-84

Waimarino Community Toy Library

027 728 2413 leave a message (turned on open days only)

Waimarino-Waiouru Community Board

John 'Luigi' Hotter, 06-385-8193; Allan Whale, 06-385-9139; Cynthia Dowsett 06-385-8086. RDC reps Rabbit Nottage, 021 111 6514, Vivienne Hoeta 022-65-88-320, Janelle Hinch 022 385 8683. Other ward councillors: Elijah Pue 027 740 6253

National Park Community Board

Board members: Simon O'Neill 021-661-159; Peter Zimmer 027 479 1926; Mark Bolten 021 191 5385; Clark McCarthy 027 475 0561. RDC rep, Murray Wilson 07-892-2774.

Taumarunui/Ohura Ward Committee

07-893-8575; Graeme Cosford, 07-895-7572; Karen Ngatai, 07-896-6658; Kim Wheeler 027-229-1527; Adie Doyle 027-495-3308; Robyn Gram 027 389 1912; Lyn Neeson 07 895 7803

Ruapehu Mayor

Don Cameron, 021 202 7629

Guidelines is published free of charge. Please help us to keep it up to date – call us if your details change, or if you see something that needs changing: 06-385-8532

Kerri brings the cancer support

Meet Kerri Dewson-Pratt – Waimarino’s cancer supportive care co-ordinator.

Kerri is a trained social worker based in Whanganui, covering Taihape, Marton and the Waimarino.

She visits the Waimarino at least once a month, for support clinics for local cancer patients at Waimarino Health in Raetihi, at Ngati Rangi Health in Ohakune and also home visits.

The Cancer Society offers help to cancer patients with transport to treatments, access to services such as massage therapists and others that can help patients.

She runs ‘living well’ workshops – four one-hour sessions on suitable exercise, sleep relaxation, dealing with treatment

side effects and the ‘new normal’ for cancer sufferers. These support workshops can help during and after treatment.

The Society can also provide petrol vouchers and food vouchers for those families who need help when someone is undergoing cancer treatment.

There is now a Waimarino connection in the Cancer Society Whanganui centre – Cassy Nation is now a health promoter for the Society.

Kerri says she looks after around 4-10 cancer patients in the Waimarino at any one time.

Contact 06-348 7402 or 022-196-7355 for more information.



Cancer support co-ordinator Kerri Dewson-Pratt and local Society member Peggy Frew discuss the support calendar for the Waimarino.

Power crews back working on the network

From Monday 8 November, TLC crews will undertake limited planned maintenance work on the electricity network supplying the King Country and Ruapehu District.

While in Alert Levels 3 or 4, they have been focused on minimising power outages, scaling down planned maintenance work, and attending to unplanned outages. With several key essential network improvement projects required to operate a reliable and safe network, TLC confirmed they are now getting back to work in a controlled manner.

GM network, Mike Fox, said some of the network projects required the power to be temporarily turned off and customers will have time to plan for when this happens.

“We know for some, turning the power

off is not ideal. However, undertaking planned work now means we can give customers early notice so that they can plan, and reduce the likelihood of unexpected power outages in the future.

“It’s important we get work underway again to prevent a large backlog of planned work developing and we’ll be planning the work so it affects as fewer customers as possible while parts of our network region remain in level 3.

“Electricity retailers will notify affected customers in advance of a planned outage – and we display information about outages on our website,” said Fox.

The lines business confirmed while a return to planned work was underway, the business will still follow strict covid safety protocols.

Name suppression for trio accused of flouting Covid-19 restrictions

One Waimarino woman and two Taihape women accused of flouting Covid-19 restrictions by travelling to Auckland for an anti-lockdown protest appeared in court in Taihape last week, gaining temporary name suppression.

The women, aged 50, 52 and 53, entered no pleas to one charge each of breaching an order issued under the Covid-19 Public Health Response Act.

They are accused of travelling to a mass gathering attended by thousands at the Auckland Domain on 16 October.

The women face maximum penalties of a \$4000 fine or six months’ prison.

One appeared in court wearing a blue sweatshirt with “voices of freedom” written on the front.

Justice of the Peace Jeffrey Wong imposed the same bail conditions on each of the women, including that they do not contact each other, do not cross Covid-19 alert-level borders and comply with Covid-19 restrictions.

When asked if she understood, one of the women replied: “I don’t understand any of this, I’m sorry,” before the JP explained what was meant.

All three said they would abide by the bail restrictions.

Police prosecutor Sergeant David Grey did not oppose the interim name suppression, saying it was appropriate that they had the chance to seek legal advice.

The women will reappear in court in November.

Report acknowledgement to Jimmy Ellingham, Manawātū reporter for Radio New Zealand.

Protect yourself, your whānau and community
Vaccination Clinic



Where

Winstone Pulp International Ltd

When

**Thursday 11 November &
Thursday 2 December**

**Employees, contractors
and public welcome**

10am - 3pm

*Or book your vaccination for
a day and time that suits you*



Book My Vaccine

**0800 28 29 26
BookMyVaccine.nz**

**Unite
against
COVID-19**



RUAPEHU Summertime **BULLETIN**

**Priceless newspaper
Summer 2020-2021**

Your guide to Ruapehu in summer

*After four enthralling and challenging days on their journey from Whakahoro, Unique Whanganui River Experience cultural navigator Hone Turu, second from left, guides his manuhiri from Pōkeno to the end of their adventure at Pipiriki.
Photo: Liz Brooker.*



PRINTING SOON!

Deadline Monday 22 November

**Book your space – call Jude 06 385 8532
or 0274 993 697**

or email: ads@ruapehubulletin.co.nz

Ngāti Rangi appoint new chair

Ngāti Rangi entities Te Tōtarahoe o Paerangi and Ngā Waihua o Paerangi have announced the appointment of Whetu Moataane as their new chairperson.

“Whetu brings a wealth of experience to the role having been the deputy chair of the board for the past year, following the inaugural trustee election,” states the Trust in a press release.

His governance experience includes the chair of the Ngāti Rangi rūnanga Te Kāhui o Paerangi, Raetihi Marae Trust and Raetihi Primary School Board of Trustees. He is also a member of the Awa FM executive committee.

“I acknowledge Dr Rāwiri Tinirau for his contribution as the chair over the past year,” says Whetu Moataane.

“His leadership has set the foundation for the Trust to continue to strive towards the vision set for us in Te Ara ki te Moungaroa, and his ongoing support as a sitting Trustee is of huge value.”

The board also appointed Sarah Bell as deputy chairperson.

“Myself, Sarah and indeed our board are committed to continuing to provide clear leadership and direction for Ngāti Rangi, particularly in this uncertain environment where the health and wellbeing of our uri and wider community must be front of mind.

“Ensuring we keep our fingers on the pulse with our people both here at home, throughout the motu and the four corners of the world, will be pivotal for us as we work to meet the needs of our people within our current reality.

“We must also continue to keep our focus on supporting the growth of our collective capacity and capability, and most importantly the aspirations of the tribe in order to vibrantly exist as a people now and in 1000 years.”

Both Mr Moataane and Ms Bell’s appointments are effective immediately.

Promise of Covid clinics on the road

On Saturday morning had the Whanganui DHB vaccination team heading back to school with one of it’s many mobile community clinics at Cullinane Collage, as well as multiple mobile Covid-19 vaccination sites on offer this week.

Although none are yet planned for the Waimarino, the invitation has been extended, says WDHB.

“Reaching our communities has always been a critical part of ensuring vaccination accessibility for everyone, and having our younger generation actively taking responsibility for keeping themselves, whanau and communities safe is fantastic,” says Rhonda Morris, engagement and design team lead for the Whanganui District Health Board.

“There were many community clinics happening this weekend through the rohe, and the vaccination teams are committed to hold them when and where they are needed,” says Rhonda Morris.

“If your workplace, whanau group, school or community organisation would like a visit from the vaccination

team, or a pop up clinic in your neighbourhood, please get in touch with us and we can work with you to make this happen.”

She said bookings can be made through 0800 888 479.

There will be the usual clinics as well as pop ups continuing over the next weeks.

Waimarino clinics are being held today, 3 November, at Raetihi 10:30 – 3pm (The Centre, 14-16 Seddon St, Raetihi) and also on Thursday 4 November.

If you’re able to head out of town, vaccination clinics are held every day at:

Te Rito – 9am – 4pm (62 Victoria Ave City centre Whanganui) – Walk ins

Central City Pharmacy – 9am – 4:30pm (121 Victoria Avenue, Whanganui)

And on Wednesday:

Living Waters Medical – 8:30am – 4pm (5 Rakau Road, Castlecliff, Whanganui)

Turn to Page 8



Whetu Moataane, Ngāti Rangi's new chair.

BAYLEYS

NEW LISTING



Ohakune 9a Shannon Street

A surprise on Shannon Street

This fantastic brand new ski chalet is an absolute gem. Complete with quality chattels and furnishings, it is ready to move on in and enjoy immediately. Thought has gone into every aspect of the property to provide a convenient lock up and leave, stylish chalet for the discerning buyer.

Call now

bayleys.co.nz/2900424

2 1

Asking Price \$545,000

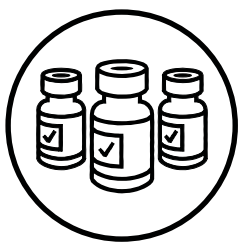
Jenny Dekker 027 455 5674

jenny.dekker@bayleys.co.nz

BARTLEY REAL ESTATE LTD, BAYLEYS, LICENSED REAA 2008

Protect against COVID-19

WAIMARINO Vaccination Clinics



Wednesday 3 November, 10am - 3pm

The Centre, 14 Seddon Street, Raetihi

BOOK NOW!

You can book now by calling:

0800 28 29 26

or going online to:

BookMyVaccine.nz

or Ngāti Rangi:

0800 N RANGI

Or just walk on in!

Visit: health.govt.nz and covid19.govt.nz for more information



Whanganui Regional Health Network



WHANGANUI DISTRICT HEALTH BOARD



Unite against COVID-19

Changes to College entranceway

Eye on Ruapehu College, contributed by staff and students

Those of you that have had to visit the college recently may have noticed the renovations being done on the main building. The second phase of the renovations has begun and the front office has been temporarily moved to the library. To find the library visitors need to walk between the main building and the outside courts.

Farewell

This week the College will farewell Campbell Hart after six years as head of physical education and rugby coach ensuring the rugby teams were competitively placed in the Whanganui competition. He also established the Junior Diploma programme for Year 9 and 10 students.

Mr Hart is taking on the assistant principal role at Taumarunui High School.

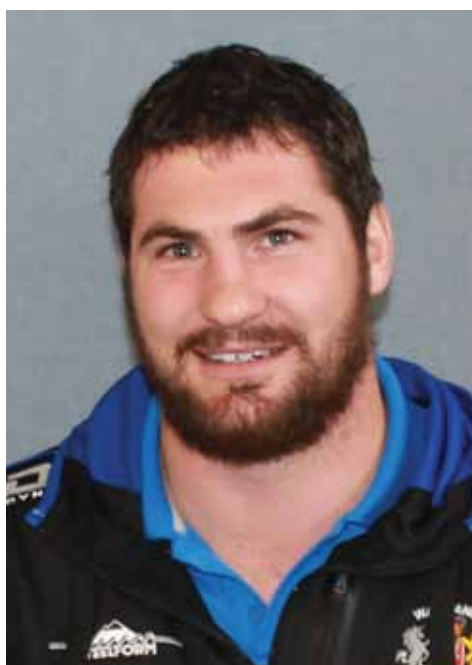
College tours

Every Monday and Tuesday afternoons during November, College principal Marama Allen will also be conducting tours for prospective students and their families. Parents are asked to phone the College to book a time as Covid-19 protocols will be followed.

High Tea

Last week Level 2 students, with the addition of a few Level 1 students, were part of a two-day 'High Tea' course run by Industry Training Solutions from Palmerston North.

The students learnt about steeping tea and what temperatures and times the different teas needed. They then as a team made sandwiches and role-played both the customer and as the service staff in a cafe.



Campbell Hart, leaving for Taumarunui.

They had a lot of fun challenging each other with ordering with different impairments and complaints (as customers). The students commented on how difficult it must be to have challenging customers and to always be polite and have a smile on your face.

Sports

A sports assembly will be held this week to recognise all students that have participated in college sports this year. This is instead of the normal sports breakfast the college would host.



Rating high teas at the College last week.

Covid vaccination clinics

From Page 7

Caltex – 9am – 3:30pm (Victoria Ave)

And on Thursday:

Te Rito – 9am – 4pm (62 Victoria Ave, City centre, Whanganui 4500) – Walk ins

Central City Pharmacy 9:30am – 12:30pm (121 Victoria Avenue, Whanganui)

Living Waters Medical 8:30am – 4pm (5 Rakau Road, Castlecliff, Whanganui)

Te Poho Marton 10am – 3pm (85 Henderson Line, Marton)

Friday:

Te Rito – 9am – 4pm (62 Victoria Ave, City centre, Whanganui) – Walk ins

Central City Pharmacy 1:30pm – 4:30pm (121 Victoria Avenue, Whanganui)

Living Waters Medical – 8:30am – 4pm (5

Rakau Road, Castlecliff, Whanganui)

Butcharts Gonville – 10am – 3pm (91 Tawa Street, Gonville, Whanganui)

Saturday:

Te Rito – 9am – 4pm (62 Victoria Ave, City centre, Whanganui) – Walk ins

Atihau – 9am – 1pm (25 Te Anaua Street, Putiki)

Central City Pharmacy – 9am – 4:30pm (121 Victoria Avenue, Whanganui)

4 Square, Cross Street, Castlecliff – 9am – 4pm

"Professionals are always on hand to discuss

concerns, answer questions and provide advice

and comfort - please reach out. We are all in this

together, and the best response to protect our rohe,

is to get the vaccination. Let's spend summer with

our loved ones whanau, not in lockdowns."

Ruapehu Bulletin Experts

Landscaping



Certified Horticulturists (Hort.Cert.NZ)

KRISTIN 022 350 9220 VICKI 021 606 743

facebook.com/naturescapersnz

naturescapersnz@gmail.com

Handyman

- Interior & Exterior house painting
- Timber repairs
- Fence & Deck building
- Kitchen & Bathroom refits

homehandyman46@gmail.com

Call Luke for a free quote

Ph 022 414 5303

Refrigeration & Heat Pumps



Design, Installation, Service



FUJITSU | NEW ZEALAND'S FAVOURITE AIR*

Ph 020 412 80295

Auto Service



- WoF – cars \$50, trailers \$35 all makes & models
- Qualified mechanics
- Tyres – cars, motorbikes, ATV's, side-by-side
- Batteries

Right here in Raetihi

Ph 06-385 4216

Butchers

Cecil's Meat & Veg
Quality meat products

Beef, pork, lamb and chicken, all cuts available.

Small goods made in store.
• Bacon • Sausages • Hams
• Pork Brawn • Black Pudding

-We are licensed to slaughter and process all home kill and wild game.

Open 6am - 5pm weekdays & 8am - 1pm Saturday
109 Hakiaha Street, Taumarunui.
Opposite the Railway Station

Ph 07 895 7570

Property Maintenance



- ▶ Minor house alterations
- ▶ Decks
- ▶ Sheds
- ▶ Bathrooms
- ▶ Fences
- ▶ Lawns
- ▶ Grounds maintenance
- ▶ Water blasting

Contact John on 027 445 6041
or porters@xtra.co.nz

Ph 027 445 6041

Septic Tank Work

Bennett's Septic Tank Cleaning Services

Septic tanks, water tanks, grease traps.

Call us for fast efficient service.

Phone Chris on 06-388-0452

Ph 06 388 0452



WWW. ohakune.info

Ohakune... your mountain town

Do you want a FREE listing on our updated site? Contact us ads@ruapehubulletin.co.nz or 06 385 8532

Appliances

Guaranteed heating, even on the coldest days

HyperCore is the only heat pump in NZ that guarantees its full rated heating capacity right down to -15 degrees!



Free quotes. Total 5-year Warranty.

Your Local 100% Independent Store & Heat Pump Installers

Ohakune TV Electrical

Ph 06 385 8700

Auto Services

AUTO SERVICE CENTRE



Authorised Holden Service Centre

Full workshop services for all vehicles, wheel alignments, computer diagnostics, warrant of fitness inspections, parts, batteries, engine oils.

84 Clyde Street, Ohakune
After hours 027 448 4080
autoservicecentre@hotmail.co.nz

Ph 06 385 9222

Plumbing / Drainlaying

B&M PLUMBING LTD

- Plumbing & Drainlaying
- Pumps - sales, servicing & installation of all pumps
- Fires & Solar
- 5 Ton Digger with Augers, Ditchwitch & Tip Truck

"Your local Registered Certifier"



Call Brian 027 436 1075

Email:

bmfred@xtra.co.nz



Ph 06 385 4718

Furnishers



WANGANUI FURNISHERS

Quality furniture flooring and window treatments for the discerning

Geoff Anderson 33 Victoria Avenue, Wanganui
027 283 9551 email wangafurn@xtra.co.nz

Ph 06 345 4554

Gas Fitting

Plumbing & Gasfitting

Cut down on your power bill.
Go gas hot water & heating
– supplied and installed.
Call for a consultation.

Phone Denise 027 482 7488 or

Email

accounts@aplumbingandgas.co.nz

Ph 06 343 6866

Engineering

Ohakune ENGINEERING

- Manufacturing and repairs
- Access equipment hire
- Engineering supplies
- BOC gases
- 20T & 50T crane hire

29 Burns St, Ohakune.
027 473 0188 Mark or 027 444 2058 Bruce
Email: sales@ohakune-eng.co.nz

Ph 06 385 8952

Electrician

Are you looking for an electrician who:

- Turns up on time?
- Keeps his promises?
- Offers efficient service & sound advice?

Then call Jake Fah at



REGISTERED ELECTRICIAN
Ohakune - Raetihi - Rangataua -
Horopito - National Park
PH. 06 385 3393

Ph 021 770 123

Carpet Cleaning



WANGANUI CARPET & UPHOLSTERY CLEANING

24 HOUR FLOOD CALLOUT

We specialise in stains, odours and hard to clean carpets and fabrics.

P.U.R.T - Pet Urine Removal Treatment

cdwanganui@outlook.co.nz

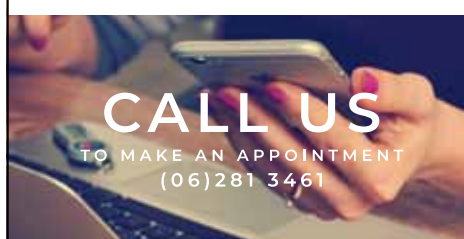
www.chemdry.co.nz

Wanganui & Ruapehu Regions

0800 22 78 22

Lawyers

YOUR DIGITAL LAWYERS



CALL US

TO MAKE AN APPOINTMENT
(06) 281 3461

WE CAN MEET WITH YOU VIA VIDEO CONFERENCE
FROM YOUR SMARTPHONE, TABLET OR COMPUTER

www.dewhirstlaw.co.nz

Ph 06 281 3461

Build, Renovate, Decorate

dreams and schemes

amanda mconachy
027 321 4050

advanced trade certified painter/decorator

- interiors/exterior • wallpapering/borders
- stencilling • special paint effects • waterblasting
- colour concepts • decorating advice • free quotes

john andrews LBP
027 627 4984

renovation specialist – 38 years

- consultancy • all aspects of construction
- design • gibstopping • planning
- concrete placement • drawings • tile laying

Land development

VERSATILE BOBCATS LTD

Bobcat+Truck Hire
Section clearing
Driveways Formed

For All Your Land Development Requirements

Contact Steve Gray **Free Quotes**
PH: 0276 854 854 / 06 3854 854

Ph 06-385-4854

Ads



Rats!

This space could have been yours.
Call us today to grab it for next week.

Ph 06 385 8532

Motor Vehicle Sales



Go Further



mazda

Award Winning Models



Call Dave anytime...
027 485 7693

davescott@xtra.co.nz
I come to see you from my home office

Wanganui Motors | Ford | Mazda

Ph 027 485 7693

Property Management

Shelley Oliver
Property Manager



Your Local Property Managers
Your Property Management Specialists

Only 8.5% + GST m. 027 903 5566
Commission on rentals p. 0800 114 978
All inclusive e. shelley@ylpm.co.nz
No other fees w. www.ylpm.co.nz

* No inspection fees * No Admission Fees * No Account Fees
* No Disbursement Fees * No Maintenance Fees * No Tribunal Fees

Ph 027 903 5566

Plumbing / Drainlaying



THE PLUMBERS THAT MAKE IT HAPPEN

Bathroom / Kitchen Renovations
New Builds Woodburning Fires
Central Heating Systems
Domestic & Commercial Plumbing Maintenance

"Your comfortable living experts"
www.matthobbsplumbing.co.nz

06 3881400 / 021 0263 4206



www.ohakune.info

Ohakune... your mountain town

Do you want a FREE listing on our updated site? Contact us ads@ruapehubulletin.co.nz or 06 385 8532

Hire

Why buy it ... hire it!
TWEEDDALE HIRE

CHECK OUT OUR EXTENSIVE RANGE OF HIRE EQUIPMENT.
SEE OUR WEBSITE
WWW.TWEEDDALE.CO.NZ



PARTY HIRE: floodlights, tables & chairs, heaters, spit roasters, wheelie bins, chafing dishes, crockery & cutlery, dehumidifier, flute & wine glasses, universal food cooker, portaloos & showers, 3-section marquee, horse float.

Marquee Hire



FOR THE BIG JOBS:
digger hire, cherry pickers, pumps, wood splitters, generators, car trailers, post hole borers, furniture trailer, concrete equipment, rollers & compactors, portable trencher



Ph 06 387 5022

Upholsterers



- Furniture Upholstery
- Vehicle Upholstery
- Tarpaulins • Canvas & Leather
- Shade sails • Saddlery

Factory, SH49, Tangiwai, Ohakune.
Mobile 0274-467-289 Fax 06-385-8483
email: westlorne@xtra.co.nz
www.westlorne.co.nz

Ph 06 385 8487

Arborist



Quality Tree Pruning
Difficult Tree Removals
Chipper & Stump Grinding
Emergency Call Outs
Truck and digger
Qualified Staff
Fully Insured
Landscaping/yard maintenance

E: treestylerswhanganui@gmail.com
For a free quote – call Clay Winter on

028 404 3525

Heat Pumps

Call our Refrigeration Engineers for a
FREE Heat Pump quote

- Interest free terms
- Professional Accredited Installer
- 6 year warranty

0800 10 70 90



NEW ZEALAND'S FAVOURITE AIR*



137 Hakiaka Street, Taumarunui

Ph 07 895 7348

Building Supplies

PlaceMakers

OHAKUNE

FOR ALL YOUR BUILDING PROJECT & DIY NEEDS

MON to FRI 7.30am – 5pm | SAT 9am – MIDDAY

7 BURNS ST (06) 385 8414

Ph 06-385 8414

FOR SALE

FIREWOOD LOGS. Pine logs for sale. 4 meters long, 500mm max diameter. 4 ton or 10 ton truck loads available early November to New Year. \$80 per ton, free delivery in the Waimarino area and extra charge outside the Waimarino. Text or call 021 055 4794.

FORESTRY SEEDLINGS, Management Services. Grow your Carbon Now. Local Expertise available. Waimarino Tree Resource. Ian 027 444 3441

TANK SPECIALISTS, water or septic. Delivered price quoted. Buy direct. Ph 0800-487-633.

BUSINESS NOTICES

LAWNMOWING AND SECTION maintenance – Phone Alpine Property Services 0800-896-689 or 027-353-5189 email: info@alpinelawns.co.nz.

WORK WANTED

GARDEN MAINTENANCE. Garden tidy up, very thorough, takes pride. Phone Mike 022 171 1032

DEATH NOTICES

BARRINGTON, FIONA MAIRE nee RITCHFIELD passed on 31 October 2021 aged 49 years after a long battle with illness. Loved wife of Rob and mother of Sam and Will. Much loved and cherished daughter of Alan and Carol, Karen and Terry. Sister and sister-in-law of Glen and Kelly, Tony and Hope, Chelle and Vallenge. Loved by all her nieces and nephews.

BUSINESS NOTICES

Wanganui Eyecare

Optometrist Consultations
16 November

Waimarino Health – 22 Seddon St, Raetihi

• Eye Examinations • Contact Lenses
• Prescription Glasses • Glaucoma Screening

0800 439 374

RUAPEHU LAW

Mark McGhie has an office at
Raetihi Chambers
Seddon Street
Fridays 9am – 1pm

Phone for appointment 021 2444 291

PUBLIC NOTICES



Raetihi Christmas Carnival Stall Registration

**Under Covid-19 Level 2
Only 30 stalls available**

Stallholder registration forms available from
Raetihi Information Centre or phone Kay 027
924 7252 kayhenare@icloud.com
or Maaki 021 401 272

Cut off date for registrations is 26 November

PUBLIC NOTICES

Got questions? Try Alpha

Free Alpha course running every Wednesday night for 8 weeks.

Starts 3 November, 7pm at The Centre Seddon Street, Raetihi.

Open to anyone interested in exploring and discovering the relevance of the Christian faith. Supper provided.

For more information contact
Kathy 027 656 1141 or Val 027 865 0612



Meeting – Weston Kirton

**Tuesday 9 November
– 10am-midday**
Ruapehu District Council
offices – Ohakune.

Please come by and chat to us about your concerns or suggestions – we look forward to meeting you!

Appointments required. Contact 027 494 4497



Ngā Waihua o Paerangi Trust November Clinics

**By appointment/Drop In
Personal Health Nurse** - Friday 5, 12, 19 & 26
(9 - 11.30) **Free Cervical Screening**

SERVICES AVAILABLE
Kaupapa Maori Mental Health and Addictions (Clem)
Supporting/ addressing needs of Tangata Whaiora
Drug & Alcohol Intervention
Te Putanga Pukenga Program
A/H Emergencies – Mental Health Assessment & Treatment Team 0800 653 358

Whānau Ora (Tina, Darnella, Neha Sophia and Mel)
Wrap around services for those with High Health and Social needs.

Advice & advocacy Support
Support for GP Practice
Smoking Cessation

Tamariki Ora (Tina and Katherine)
Well Child Checks for pepe 0-5 years
Kaiawhina Additional Support

He Puna Ora (Awhi)
Coordinated care with hapu māmā and or whanau/ māmā with pēpi 0-3yrs which focuses on strengths and growing connections within Te Ao Maori

Te Whare Āhuru Ki Ruapehu Housing Project (Megan and Aroha)

Bowel Screening

If you have any queries relating to the Bowel Screening Project, please contact Darnella 0272 455 278 or Darnella.Hawira@ngatirangi.com

Appointments/More Information Contact Admin
Mon-Fri- 8.30am-5pm 06 3859 580 /0, 0274758347
or email Katherine.Herewini@ngatirangi.com

We have an AED Defibrillator available on site.

SITUATIONS VACANT



Hey kids – need extra pocket money?

The Ruapehu Bulletin requires Wednesday morning deliverers in Ohakune. Phone Robert on 06-385-8532.

PUBLIC NOTICES

Mangawhero River Walkway Working Bee

5.30pm Thursday

Meet at the Shannon Street swingbridge
Broom control

The Chocolate Eclair Shop

Helps us celebrate our retirement

As a THANK YOU to our loyal customers, we will be open every day from 4 November until we close on 12 November with \$1 cakes (maximum 1 dozen per customer) and giveaways (while stocks last - in-store only).

We would like to thank our loyal customers, extremely hard working staff and our supportive family. Without them, we could never have done it.

We look forward to seeing Geoff, Ella and family opening The Chocolate Eclair Shop next year. We wish them all the best and hope they enjoy running the business as much as we have.



PROPRIETORS OF PIPIRIKI TOWNSHIP NO.1 AND OTHER BLOCKS INCORPORATION

NOTICE OF HUI

Special General Hui

To discuss Tourism development in Pipiriki including the Pipiriki House site.

We will be seeking nominations for 3 shareholders to join our Kotahi Team to help us work through the opportunities for Pipiriki House.

Due to Covid Alert Level 2 requirements we are holding our hui online, to be livestreamed from the Paraweka Marae.

Those who live in Pipiriki / up the awa are welcome to attend at Paraweka Marae.

All other shareholders can join online (links below), as capacity is limited to 40 people with social distancing.

An interactive livestream from the Pipiriki bubble is the best way to keep everyone healthy and safe and involved.

Please join us and contribute to the vision.

**Hui will be held on
Saturday 6 November 2021 at 10am
at Paraweka Marae, Pipiriki – for local
attendance only
and will be livestreamed for everyone
else via ZOOM:**

<https://us02web.zoom.us/j/89984838023?pwd=WEhGU0V2REl0TG5keDhTFVUU1BVZz09>
Meeting ID: 899 8483 8023
Passcode: 445566

Or the link through our website
<http://www.pipirikin.co.nz/page-15/>

For more information and updates go to the website www.pipirikin.co.nz or www.pipirikin.co.nz/page-20/ or our Pipiriki Facebook page.

PUBLIC NOTICES

2021 ELECTION OF TRUSTEES DECLARATION OF RESULTS

The results for the 2021 Trustee elections for the Ngāti Tūwharetoa Fisheries Charitable Trust that closed on Friday 22 October 2021 are:



Ngāti Tūwharetoa (BOP) Settlement Trust (1 vacancy)	Votes Received
TE RIINI, Karilyn	1,396
ADLAM, Rae Beverley	503
INFORMAL	4
BLANK VOTING PAPERS	101

Karilyn TE RIINI is declared elected as the Trustee for the Ngāti Tūwharetoa (BOP) Settlement Trust.

Tūwharetoa Bay of Plenty Ward (1 vacancy)	Votes Received
SIMPSON-ALMOND, Shaneen	1,105
TE RIRE, Jonathan	781
INFORMAL	3
BLANK VOTING PAPERS	115

Shaneen SIMPSON-ALMOND is declared elected as the Trustee for the Tūwharetoa Bay of Plenty Ward.

Tūwharetoa Māori Trust Board (1 vacancy)	Votes Received
BIDDLE, Heemi James	1,241
IWIKAU, Channey Duncan Turoa	698
INFORMAL	6
BLANK VOTING PAPERS	59

Heemi James BIDDLE is declared elected as the Trustee for the Tūwharetoa Māori Trust Board.

The voter return was 19.64%, being 2,004 votes cast from 10,202 eligible electors, of which 56.29% voted via the internet and 43.71% voted by post.

Anthony Morton
Returning Officer – Ngāti Tūwharetoa Fisheries Charitable Trust
PO Box 3138, Christchurch 8140
0800 666 041
iro@electionz.com



PUBLIC NOTICES



FINAL PROPOSAL FOR REPRESENTATION ARRANGEMENTS FOR THE 2022 LOCAL ELECTIONS

On 27 October 2021 Horizons Regional Council considered the submissions received on its initial proposal regarding the representation arrangements for the Council to apply for the local elections to be held on 8 October 2022.

Submissions

The Council received 12 submissions, including 1 late submission and 1 submission that was subsequently withdrawn.

On its proposal to have 14 regional councillors, 12 elected from 6 general constituencies and 2 from 2 Māori constituencies:
3 submissions were in favour and 8 opposed summarised as follows:

- One submitter supporting the maintenance of Ruapehu representation (accepted).
- One submitter sought a goal of 50 percent Māori councillors (rejected – legislation specifies how the number is calculated).
- Three submitters opposed increasing the total number of councillors. One submitter sought a reduction in the total number of councillors, to 10 (rejected – the Council considers 14 councillors provides fair and effective representation).
- One submitter sought that Horizons review the two Māori constituencies after two election cycles (accepted subject to any change in legislative requirements).
- One submitter proposed an alternative arrangement for general constituencies to achieve even population distribution between councillors, including: 4 councillors for Palmerston North; 2 for Whanganui urban; 1 each for Feilding and Levin and 1 each for 4 'districts' (Northern, Southern, Eastern and Western) (rejected – the submission does not meet the legislative requirements and the Council consider the proposal provides for fair and effective representation).
- One submitter proposed that the boundary between the 2 Māori constituencies should be at the Rangitikei River (rejected – there is no indication of support from iwi or hapū and to the extent that it is practicable, constituency boundaries should conform with the boundaries of territorial authority districts or wards).

On its proposal to support or oppose the names Raki Māori and Tonga Māori for Maori constituencies:

2 submissions were in favour and 4 opposed, 3 neither supported nor opposed and 2 supported either iwi engagement or a decision to be made by the electors concerned (the Council accepted the support and rejected the opposition).

Final proposal

Having considered all of the submissions, the Council adopted its initial proposal as its final proposal. Council considers the proposal is the most appropriate to ensure that all the Region's communities of interest are effectively represented, and the arrangements do not create barriers to participation.

Council representation

It is proposed that Council comprises 14 members elected from 6 general and 2 Māori constituencies as shown in the tables below:

Constituency	Description
Ruapehu	Ruapehu District and the parts of Waitomo and Stratford Districts located within the region.
Whanganui	Whanganui District.
Manawātū-Rangitikei	Manawātū District, all of Rangitikei District except the part located in the Hawkes' Bay Region, and including the part of Taupō District within the region.
Palmerston North	Palmerston North City.
Horowhenua	Horowhenua District.
Tararua	Tararua District except the part of the district located in Greater Wellington Region.
Raki Māori	All of Ruapehu District, Whanganui District and Manawātū District; all of Rangitikei District except the part located in the Hawkes' Bay Region; and including those parts of Stratford District and Waitomo District located within the region.
Tonga Māori	Palmerston North City, all of Horowhenua District, and all of Tararua District except the part located in Greater Wellington Region.

The population that each member will represent (rounded to the nearest hundred) is as follows:

Constituency	Population (2020 Statistics NZ estimate)	Members	Population per member
General constituencies			
Ruapehu	9130	1	9130
Whanganui	39700	2	19850
Manawātū-Rangitikei	41800	2	20900
Palmerston North	80700	4	20175
Horowhenua	31000	2	15500
Tararua	16000	1	16000
Total general constituencies	218330	12	18194
Māori constituencies			
Raki Māori	18280	1	18280
Tonga Māori	17560	1	17560
Total Māori constituencies	35840	2	17920
Total	254170	14	

Section 19V(2) of the Local Electoral Act 2001 requires that the population each member represents for the general constituencies must be within the range of 18,194 +/- 10% (16,375–20,013), unless particular community of interest considerations justify otherwise. Section 19V(2) of the Local Electoral Act 2001 also requires that the population each member represents for the Māori constituencies must be within the range of 17,920 +/- 10% (16,128 – 19,712), unless particular community of interest considerations justify otherwise.

The representation of Ruapehu, Manawātū-Rangitikei, Palmerston North, Horowhenua and Tararua Constituencies fall outside the stipulated range. Council considers that the existing arrangements are the most appropriate to ensure that Ruapehu, Manawātū-Rangitikei, Palmerston North, Horowhenua and Tararua's communities of interest are effectively represented, and the arrangements do not create barriers to participation.

Appeals and objections

Any person who made a submission on the Council's initial proposal may lodge an appeal against the Council's decision. The appeal must relate to the matters raised in that person's submission.

Appeals must be made in writing and must be received by Council no later than **11.59pm, Sunday 5 December 2021.**

Further information

Any queries regarding the Council's decision should be directed to:

- Katharine Tongs, Electoral Official (Freephone 0508 800 800 or 06 9522 800)
- Physical address - Horizons Regional Council, 11-15 Victoria Avenue, Palmerston North 4442
- Postal address – Horizons Regional Council, Private Bag 11025, Palmerston North 4442
- Email – submissions@horizons.govt.nz

Michael McCartney
CHIEF EXECUTIVE

PUBLIC NOTICES

MEETING CANCELLATION

The Strategy & Policy Committee meeting previously advertised to be held on 9 November 2021, has been cancelled.

M J McCartney
CHIEF EXECUTIVE

KCT Trust Deed

The King Country Trust (KCT) want to make a real difference to the day-to-day lives of their consumer beneficiaries.

KCT has reviewed their Trust Deed to ensure it best serves their beneficiaries, reflects changing technology and is understood by all.

It's important that everyone has a chance to look at and consider what might be proposed as needing to change.

As a beneficiary, you still have an opportunity to review and provide feedback on these changes.

You can review the Trust Deed changes and provide feedback via our website: <https://kcpowertrust.co.nz/trust-deed-review/>

Online and postal submissions need to be received by 12th November 2021. The Trust will hear any oral submissions at their meeting to be held at Oreti Village Resort in Pukawa on 26th November 2021 at 10.00am - and will then use this feedback inform their final decision at their next Trust meeting to be held at the same time and at the same location on 21st January 2022. This Trust meeting will also be open to the public.

These meeting venues will be subject to COVID restrictions at the time. Please refer to our website for up-to-date information.

For more information please contact:
Adie Doyle on 027 4953308 or
adiedoylenz@gmail.com

**www.
ohakune.
info**

**Need old
newspapers for
your garden,
packing or
firelighting?**

**We have lots here at the
Bulletin office, 45 Clyde St,
Ohakune**

**Come in and grab a
bundle!**

Snow passes for 2020 sell fast

More than 60% of Mt Ruapehu’s 2022 Early Bird Season Passes had been sold by Friday, reports the company.

As it did last year, Ruapehu Alpine Lifts has put a cap on the number of passes it will sell.

The milestone was reached after the passes had been on sale for seven days.

“We are really looking forward to joining you in making the most of 2022 on New Zealand’s mightiest maunga,” says RAL.

“With the cap in place, this now of course means that only 40% of our Early-bird Season Passes are still available for you to purchase. We do anticipate these will sell out in the next couple of weeks.”

The company asks people who need to contact them to be patient.

“Our guest services team has been working really hard, fielding a large number of enquiries. It is taking a bit longer to respond than normal, up to four days in some cases.

“Please be assured, if you already have an enquiry sitting with the team, or have one you need to send through, you will not miss out on an Earlybird Season Pass while sitting in their queue.”

Holders of a 2021 season pass will have the price frozen for their 2022 pass, equaling a \$50 discount.

The Company is also offering 50% credits to Auckland and Northland residents who were unable to use their passes for more than four days.



Dylan Story slashes his way to the end of the 2021 snow season. Photo: Scott Nationa.



Robin’s family in happier times, after the Greenlea Rescue Helicopter rushed her daughters to hospital in 2014. You can donate to the Trust at <https://www.rescue.org.nz/donate/>

Ruapehu rescue helicopter throwback

The Phillips Search and Rescue Helicopter service looks back at a mission in 2014, to a car crash in the Ruapehu District.

Robin can vividly recall the moment she got a call from her daughters’ ski coach to say they had been involved in a crash at a T-intersection in National Park in 2014.

“I ignored phone calls from family because I was in a ski rep meeting,” said Robin, who runs a ski race programme, “but then the coach phoned!”

Robin raced to what she describes as “a hideous intersection” where she encountered a dreadful scene; her two 12-year-old daughters being pulled from a wreck.

“The whole road was closed off at all four directions of the intersection to allow the Greenlea Rescue Helicopter to fly in and land,” she said.

Robin flew in the helicopter with daughter Amy, while her second daughter, Hannah, went by road ambulance.

“Seeing my daughter strapped up in the helicopter was very emotional. I know that some parents can’t fly with their children; I personally don’t know how I would have coped in that scenario.”

The girls spent the next two weeks in Waikato Hospital suffering concussion and breaks to jaws, collarbones and pelvises with Hannah enduring the confines of a wheelchair for a further six weeks.

“The community were amazing,” said Robin, “and their support to our family over the ensuing weeks showed us we were part of that community.”

“I hope my family never need the helicopter service again, but if someone else does, I am happy to contribute and be a part of the community.”

Local newspaper advertising is alive and well right here in Ruapehu

There is a lot of talk about the demise of newspapers, following the explosion of on-line media. But local community newspapers like the **Ruapehu Bulletin** reach as many people as they always did. With the cacophony of information through electronic media, our readers like to pick up their **Bulletin** and read about the people and places in their community.

You can by-pass the confusing and eye-watering number of websites (last count, well over half a billion) and talk directly with your customers by advertising each week in the **Ruapehu Bulletin**.

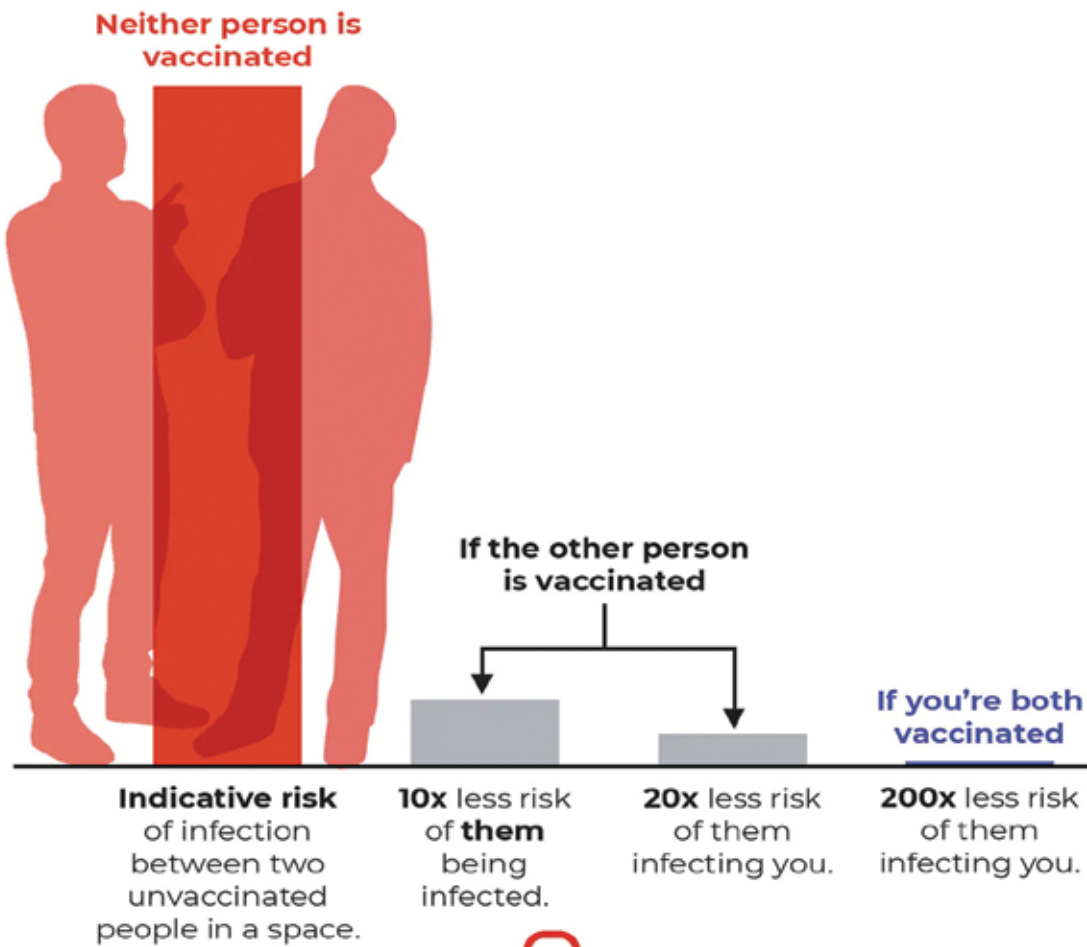
Your stories,
your people,
your community,
your newspaper,
your place to
reach your
customers



Contact Jude today
for details of our
*Starter Pack on 06 385 8532
Email ads@ruapehubulletin.co.nz



What’s the risk of socialising with vaccinated or unvaccinated people?



Some people have wondered what’s the point in getting vaccinated against Covid-19, when you can still catch the disease. Melbourne University has come up with this graphic to show the numbers and risks around the virus for the vaccinated and the unvaccinated. One analogy to consider would be whether to wear a seatbelt in a car. If you crash, a seatbelt is likely to save your life, but it’s not a 100% guarantee. But you would still wear it because it is possible – even probably – that it will save your life.