

# Hideaway



1,520 sq. ft.

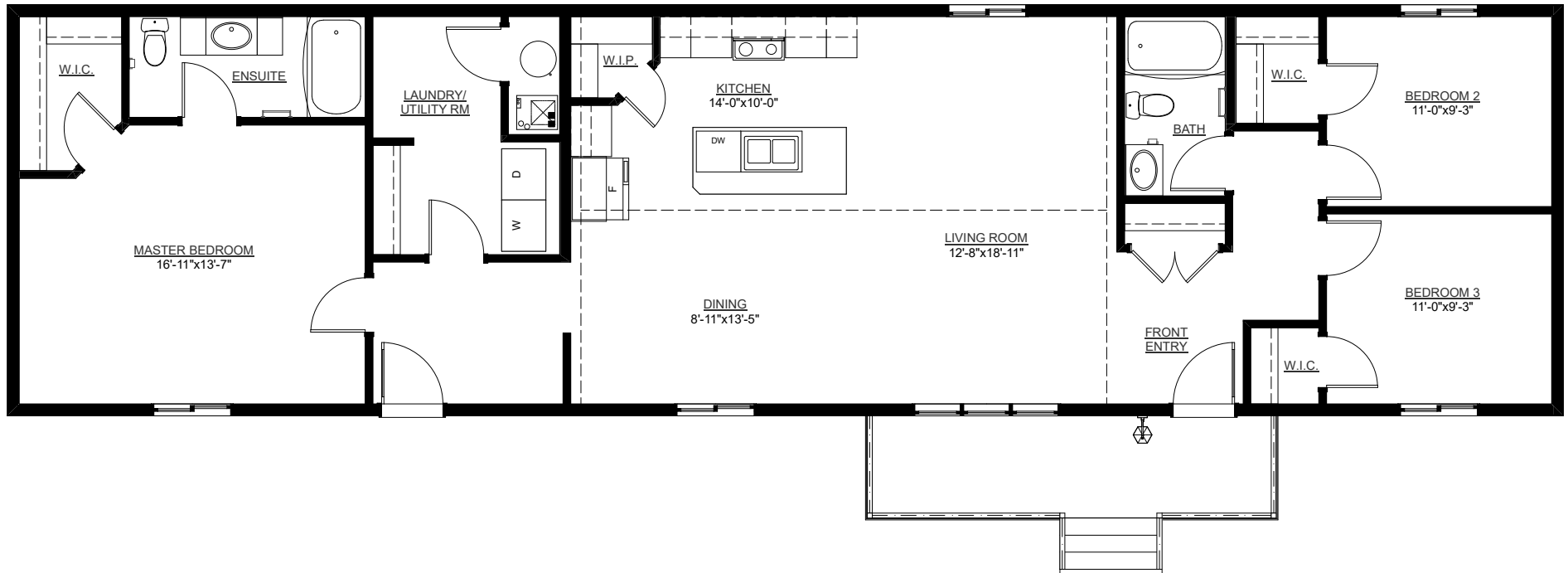
3 Bedroom  
2 Bathroom

20' x 76'  
Modular Bungalow



The Hideaway is where form and function meet for a truly comfortable home for a busy family.

# Floorplan and As-Built Features



Vinyl shakes  
Durable vinyl siding  
Additional livingroom window

Kitchen island  
Open floorplan  
Extended eating bar

Oversized ensuite vanity  
Spacious master bedroom



**Comfort Series - NPL 947**

Base Price \$ \_\_\_\_\_

As-Built Price \$ \_\_\_\_\_

2020-02-07