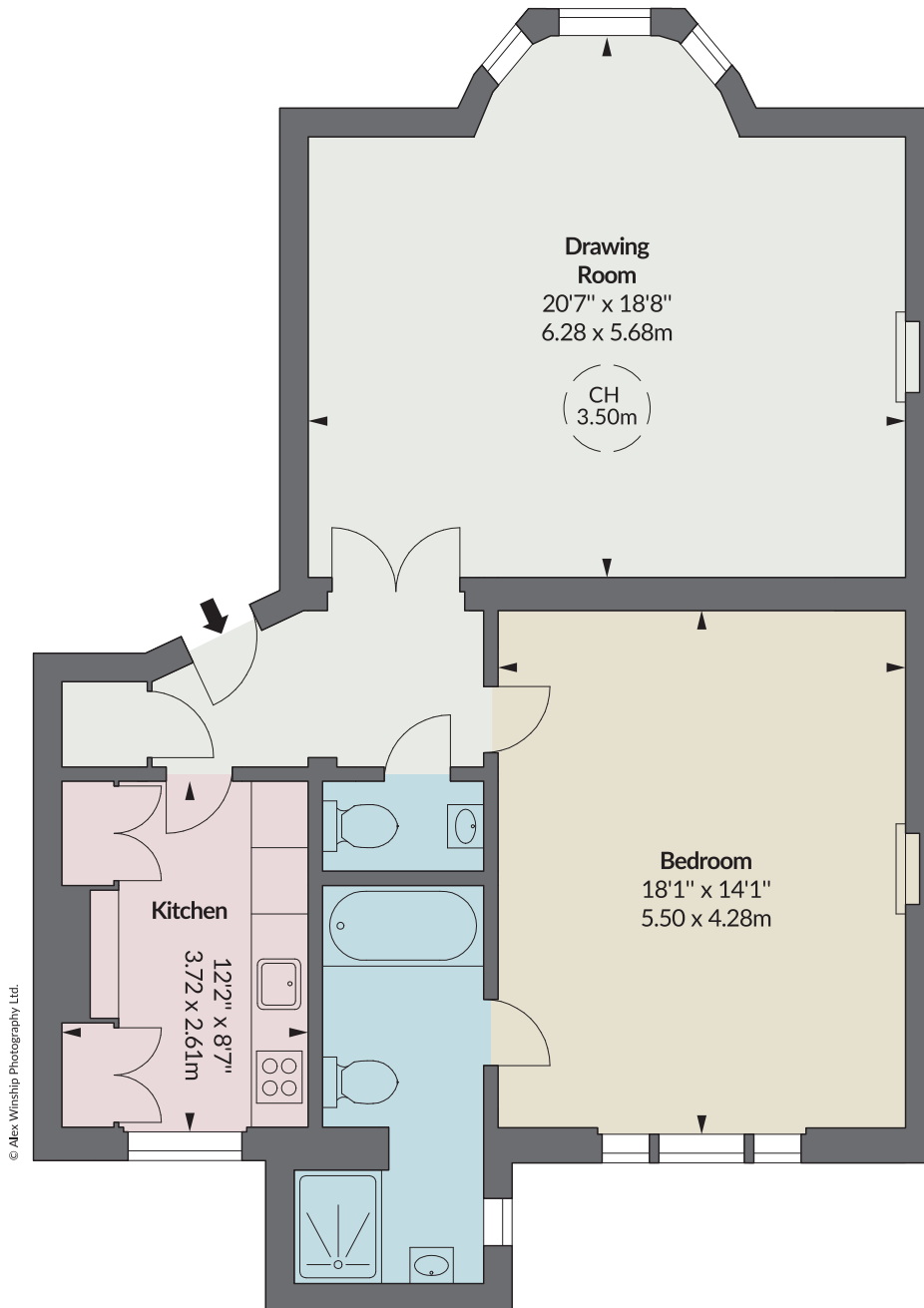


The Little Boltons SW10

APPROXIMATE GROSS INTERNAL AREA
910 sq ft / 84.54 sq m



Raised Ground Floor

Floorplan for guidance only, not to scale or valuations purposes. It must not be relied upon as a statement of fact. All measurements and areas are approximate and have been prepared in accordance with the current edition of the RICS Code of Measuring Practice.