



Smart about buildings.



**CANY is a building enclosure
consulting firm offering
full architectural
and engineering services.**

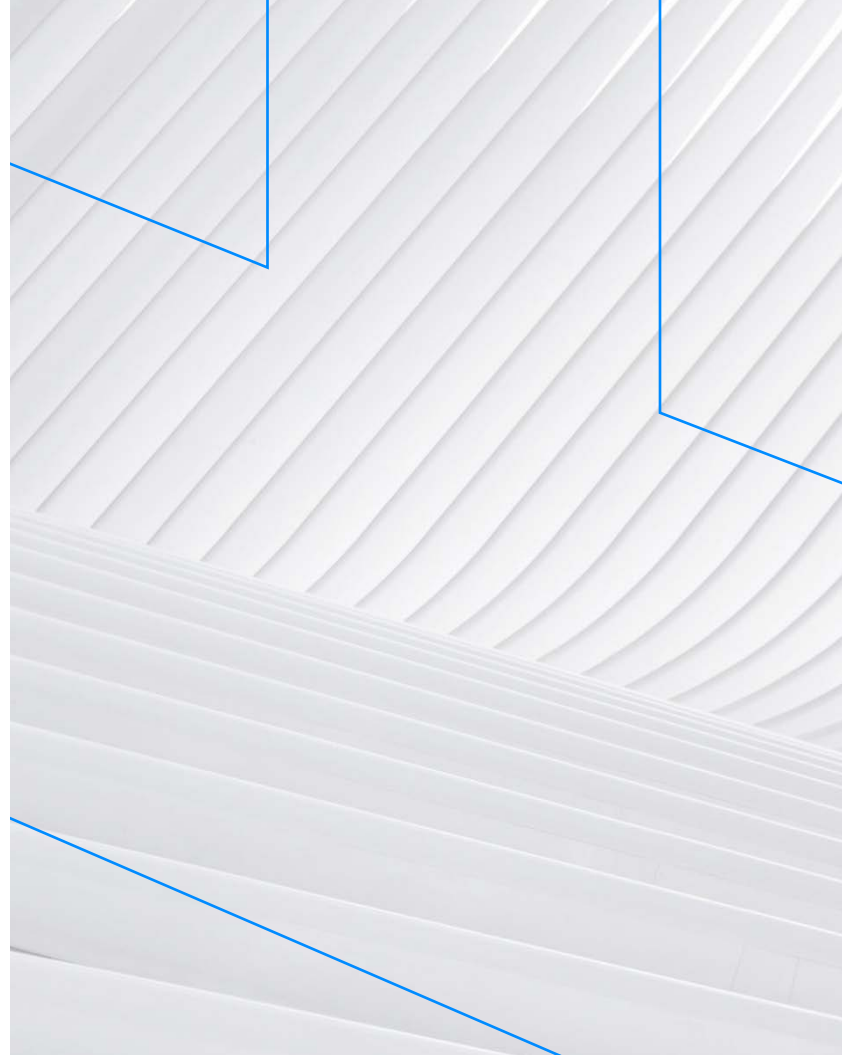
Based in New York City, CANY has 25 years' experience providing the gold standard in building investigation, inspection and design services. Our clients include Owners, Developers, Property Managers, Architects, Engineers, Contractors, Manufacturers, and other Consultants across the country.

CANY is direct, hands-on and highly responsive. We create tailored, cost-effective solutions to complex problems. We're smart about buildings.

Existing Buildings

Collaboration between our in-house architects, engineers and experienced technical staff creates deeper insights and fewer surprises.

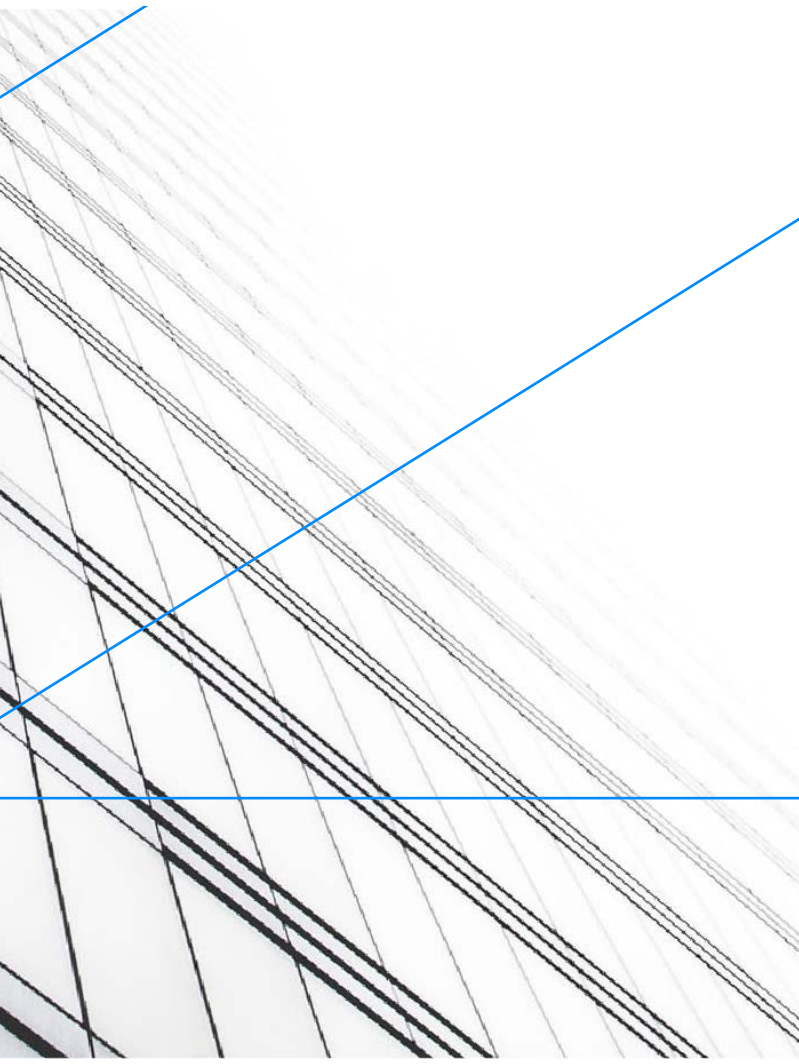
- > Architectural Conservation
- > Historic Preservation
- > Landmark Restoration
- > FISP (Local Law 11)
- > Industrial Rope Access
- > Parking Garage Inspections
- > Special Inspections
- > Due Diligence Inspections
- > Forensic Analysis
- > Repair Assessment
- > Engineering Analysis
- > Architectural Design
- > Filing Administration



New Construction

Identifying risk, articulating strategy, formulating solutions & monitoring compliance from conception through realization.

- > Building Enclosure Consulting
- > Design & Constructibility Review
- > Specification Writing
- > Wind Load Analysis
- > Mock-up + Testing
- > Shop Monitoring
- > Special Inspections
- > Progress Inspections
- > Proposal Review

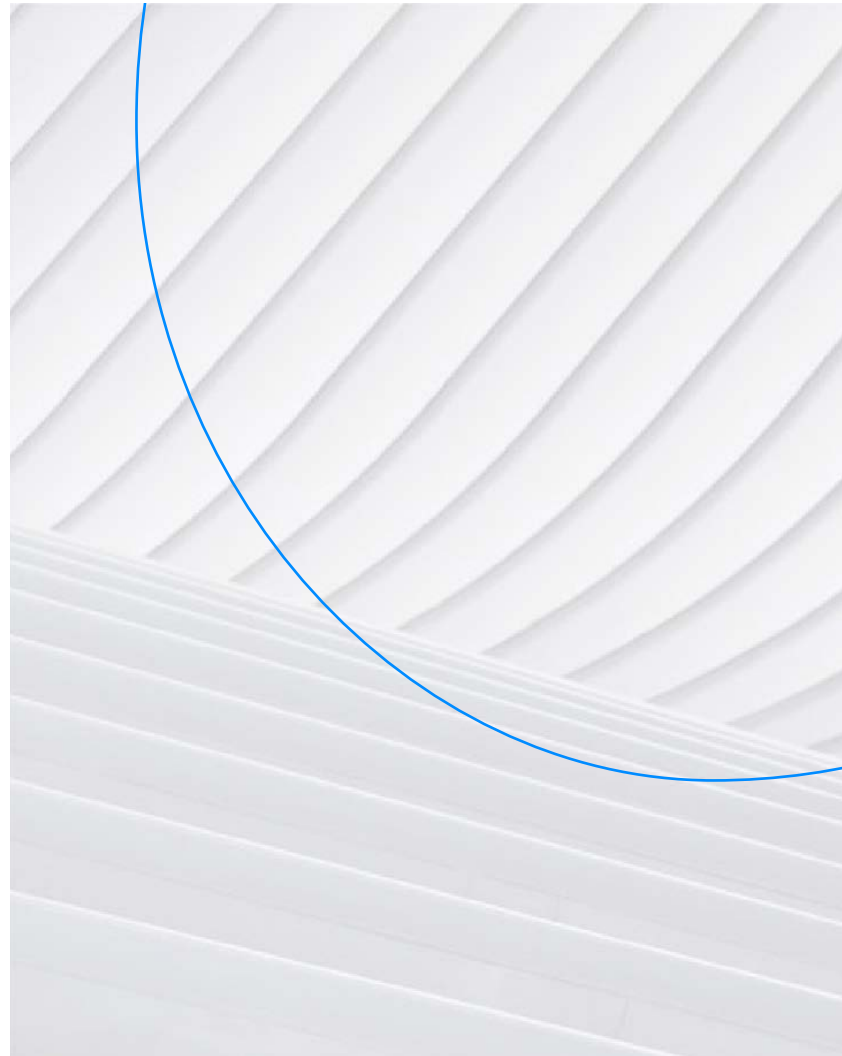




Building Sustainability

A holistic approach to long-term energy code compliance and building efficiency.

- Local Law 97: Energy Inspection, Emissions Analysis & Repairs/Upgrades for Compliance
- COM-Check Analysis
- Zone Green Analysis
- Therm & Hygrothermal (WUFI) Analyses



Select Clients & Partners

Commercial Real Estate:

S.L. Green, Paramount Group, Capital Properties, Empire State Realty Trust, Grenadier Realty, SAVANNA, George Comfort & Sons, Thor Equities, Silverstein Properties, Trump, Madison Equities, Winter Organization, CIM, Atlas Capital, Monday Properties, Kaufman Organization, Invesco, Kensico Properties, General Growth Properties, Tishman Speyer

Government & Arts:

Federal Aeronautics Administration, US Navy, National Security Administration, Smithsonian Institution, Austrian Cultural Forum (Republic of Austria / BIG), Israeli Consulate (State of Israel), Chinese Consulate (Peoples Republic of China), Guggenheim Museum, Neue Galerie, Museo del Barrio, La Mama, Music & Arts LLC, Hart & Dirksen Senate Office Buildings, US Postal Service, US Food and Drug Administration, National Institute of Health, US Embassy Ottawa, NYC Board of Education

Developers:

L&M Development Partners, Rockrose Development LLC, Avalon Bay Communities, Cove Development Services, Heatherwood Communities, Lightstone Group, Quinlan Development Group, Empire Core Group, Urban Development Partners, Dumbo Assemblage, Bell Urban, Fieldstone (Transwest), Roseland (Mack-Cali), Landsea Holdings, Dunn Development, BFC Partners, The Hudson Companies

Residential Owners & Managers:

Newmark Knight Frank, CBRE, Jeffery Management, Stonehenge Management, Midboro Management, Helm Management, Macklowe Management, Charles H. Greenthal Management, Foxy Management, Century Management, Brown Harris Stevens, Gramatan Management, Rosehill Management, RY Management Riverside Management

Select Clients & Partners

Education, Healthcare & Philanthropy: Memorial Sloan Kettering, Montefiore Medical Center, Covenant House, New York University, NYC College of Technology, Columbia University Medical Center, Northwell Health (NSLIJ), NYU Langone Medical Center, Lennox Hill Hospital, Beth Abraham Health Services, Virginia Commonwealth University, Saint Jude’s Children’s Hospital

Hospitality: Omni Hotels, Hilton Hotels, Radisson Hotels, Knickerbocker Hotel, Nomad Hotel, Affinia Hotels, AKA Hotels, Club Quarters Hotels, Sydel Group, Lodgeworks, Starwood Resorts, Denihan Hospitality, Pierre Hotel, Embassy Suites Hotels, Fashion 26 Hotel

Architects & Engineers: Pelli Clarke Peli Architects, SOM Architects, Jacobs Engineering, Perkins Eastman, SLCE Architects, Landow & Landow Architects, Der Scutt Architects, Fogarty Finger Architects, Curtis & Ginsburg Architects, Flank Architects, Ryall Porter Sheridan, GF 55, Urban Edition

Projects

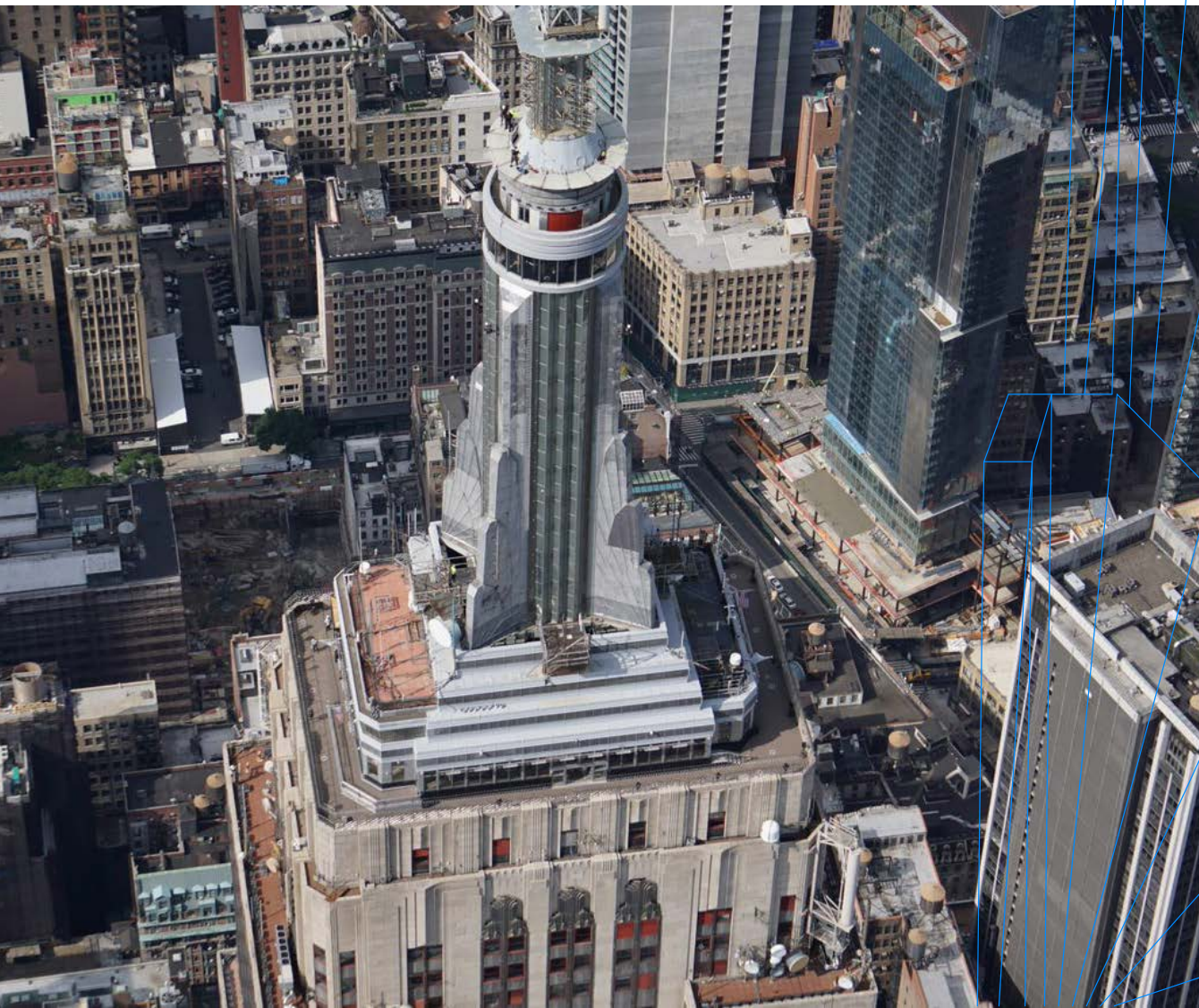
CANY
Architecture + Engineering

Empire State Building Flat
Building 145 West St Centr
Hospital Crown Building Fi
Fisk O'Toole Building One
Astor Place 115 Spring St
reet David H. Koch Morris
New York University 2 Rec
Randolph Houses Hudson
Katz Women's Hospital Mc
Phase II New York Universi
145 West Street Empire St
Guggenheim Flatiron Build

Empire State Building

Location: 350 Fifth Avenue, New York, NY
Status: Completed
Client: Empire State Realty Trust
Use: Commercial Office
Size: 102 Stories

Services: Landmark Restoration
IRA Inspections
Antenna Removals & Restoration
Waterproofing



The Trinity Centre

Location:	111-115 Broadway, New York, NY
Status:	Completed
Client:	Capital Properties
Use:	Commercial Office
Size:	2 x 22-Story Buildings (Combined 1,000,000 Sq. Ft.)

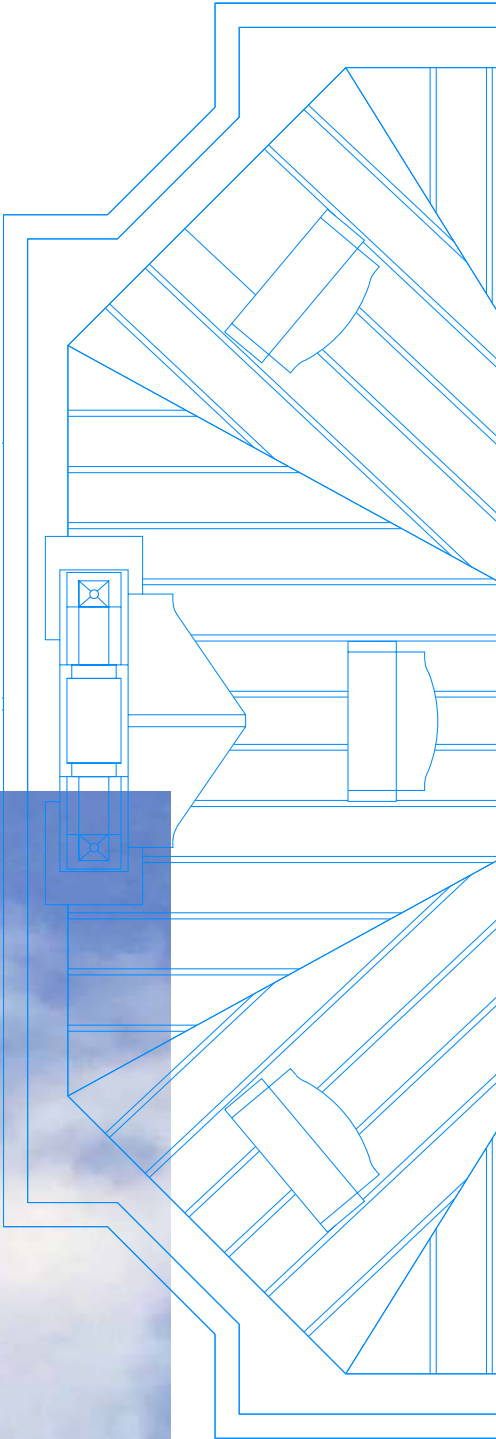
Services:	Landmark Restoration FISP Inspection Cornice Replacement & Restoration
-----------	--



Crown Building

Location: 730 Fifth Avenue, New York, NY
Status: Completed
Client: General Growth Properties, Inc
Use: Mixed
Size: 25 Stories + Penthouse

Services: FISP Investigation
Construction Administration
Facade Restoration
Progress Inspection

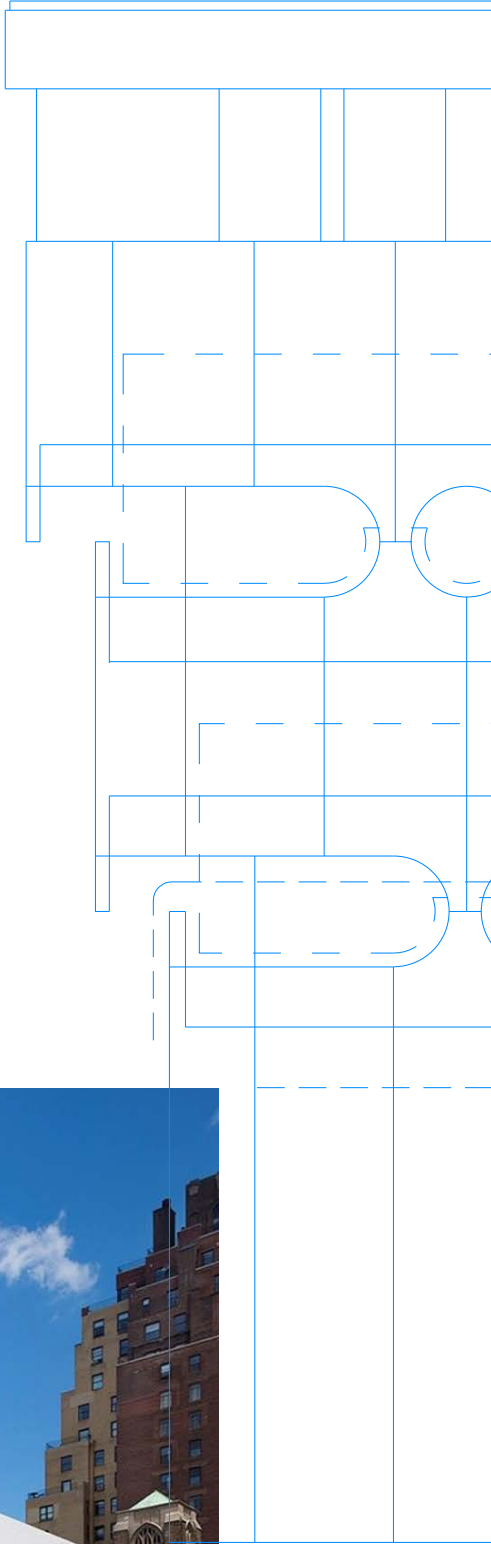


O'Toole Building

Location:	20 7th Avenue, New York, NY
Status:	Completed
Client:	Northwell Health
Use:	Healthcare
Size:	6 Stories + 2 Level Penthouse

Services:	Landmark Restoration Redevelopment Coordination Project Management Planning Investigation Construction Contract Administration
-----------	---

Awards:	Lucy G. Moses Preservation Award from the New York Landmarks Conservancy (2017) Design Award of Excellence Commercial, from the Docomomo U.S. Modernism in America Awards
---------	--

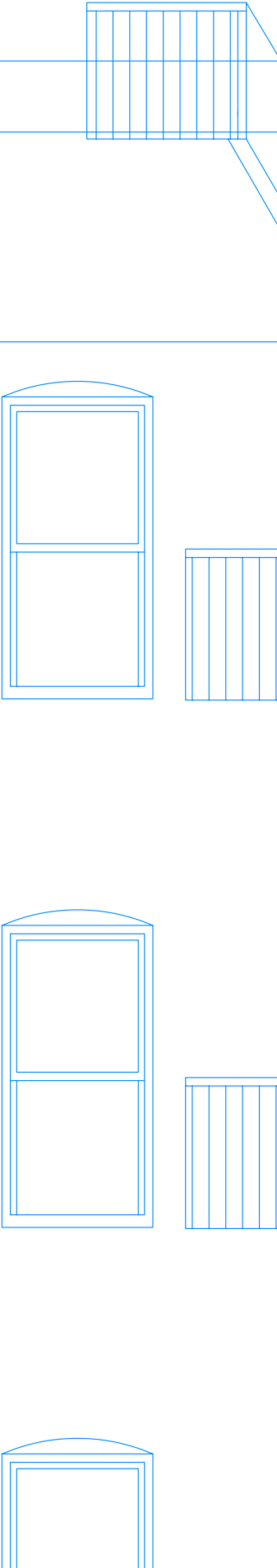


Randolph Houses

Location: West 114th Street, Harlem, New York, NY
Status: Complete
Client: SLCE Architects
Use: Residential (Affordable Housing)
Size: 22 Buildings

Services: Construction Document Review
Energy Analysis
Pre-construction Performance
Mock-up Testing
CA Services
Quality Control Inspection Services
Special Inspections.

Awards: The 2017 Excellence in Historic Preservation Awards from the Preservation League of New York State, the 2017 Lucy G. Moses Preservation Award from the New York Landmarks Conservancy, and the 2018 New York State Historic Preservation Award from the Office of Parks, Recreation and Historic Preservation.



New York University

Location: Multiple Properties
Status: Ongoing
Client: New York University
Use: Institutional (education)
Size: Over 150 Buildings

Services: Construction Document Review
Energy Analysis
CA Services
Quality Control Inspection Services
Special Inspections.



Hudson Yards Site C

Location: 555 West 38th Stree, New York, NYC
Status: Ongoing (Pre-Construction CA services stage)
Client: Rockrose
Architect: Pelli Clarke Pelli Architects/SLCE Architects
Use: Residential
Size: 55 Stories (235,000 Sq. Ft. Exterior Wall)

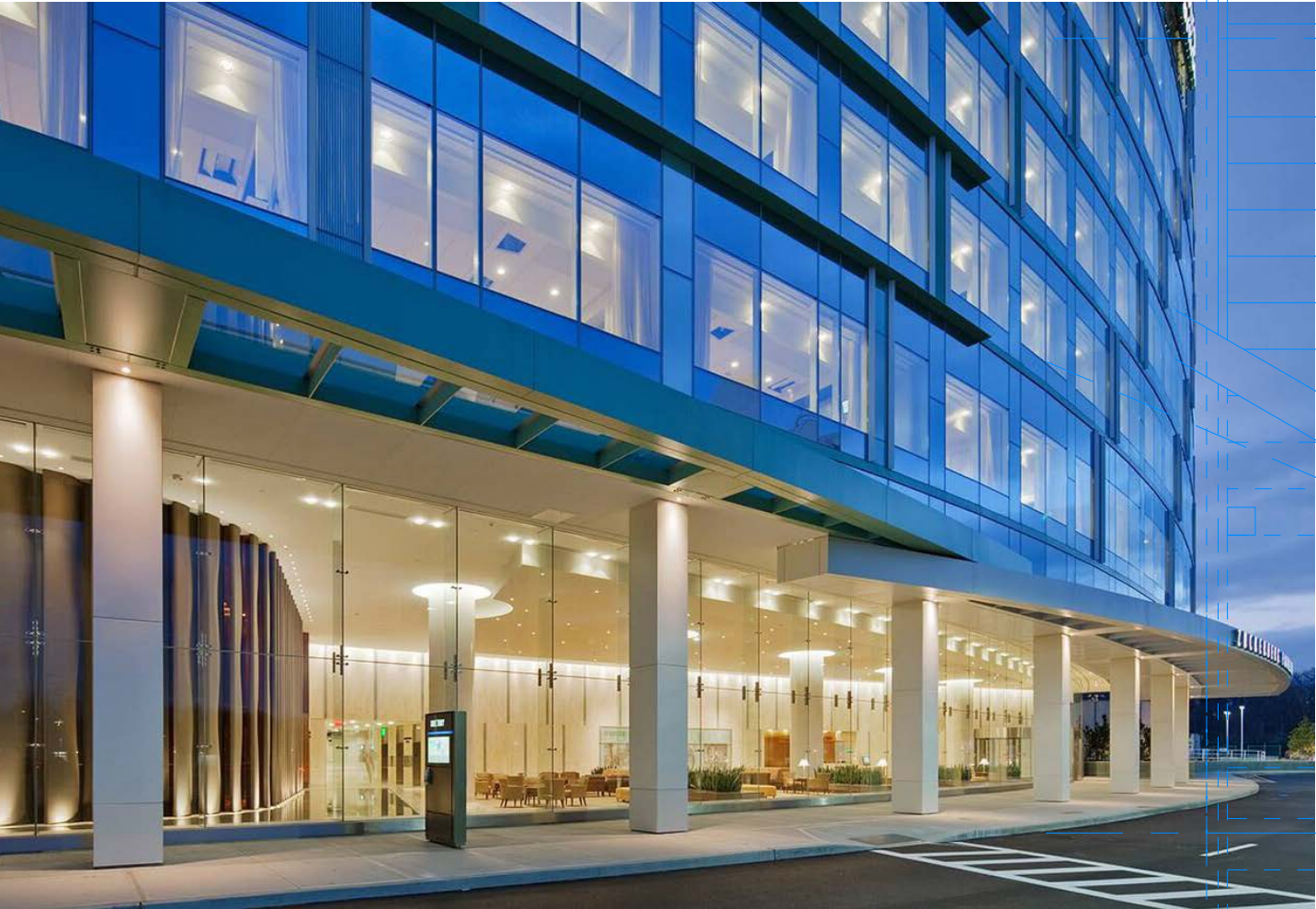
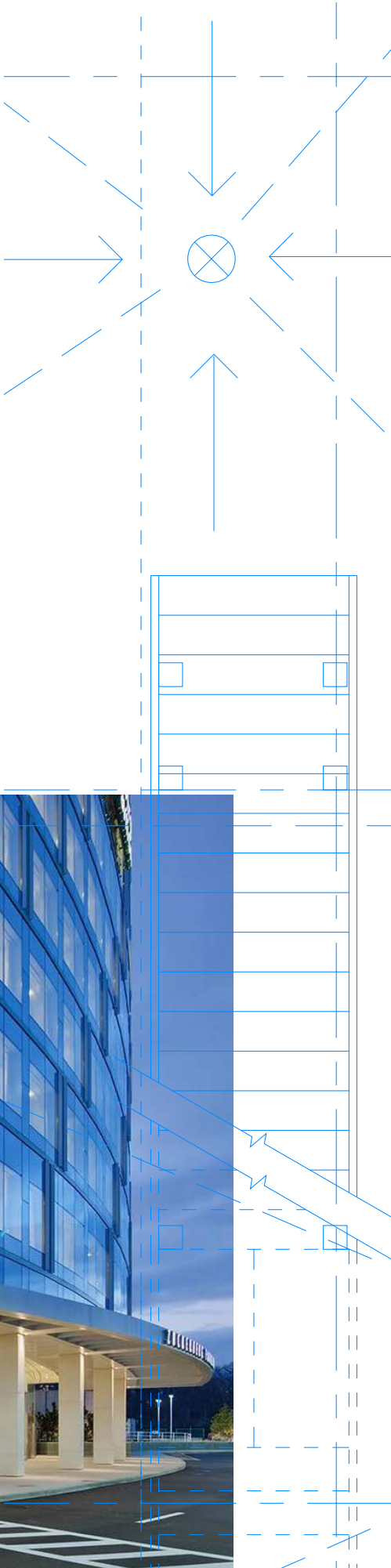
Services: Construction Document Review
Energy Analysis
Pre-construction Performance
Mock-up Testing
CA Services
Quality Control Inspection Services
Special Inspections



Katz Women's Hospital

Location: Katz Women's Hospital, New Hyde Park, NY
Status: Completed
Client: Northwell Health
Architect: SOM
Use: Hospital
Size: 10-Stories (approx.. 54,000sf)

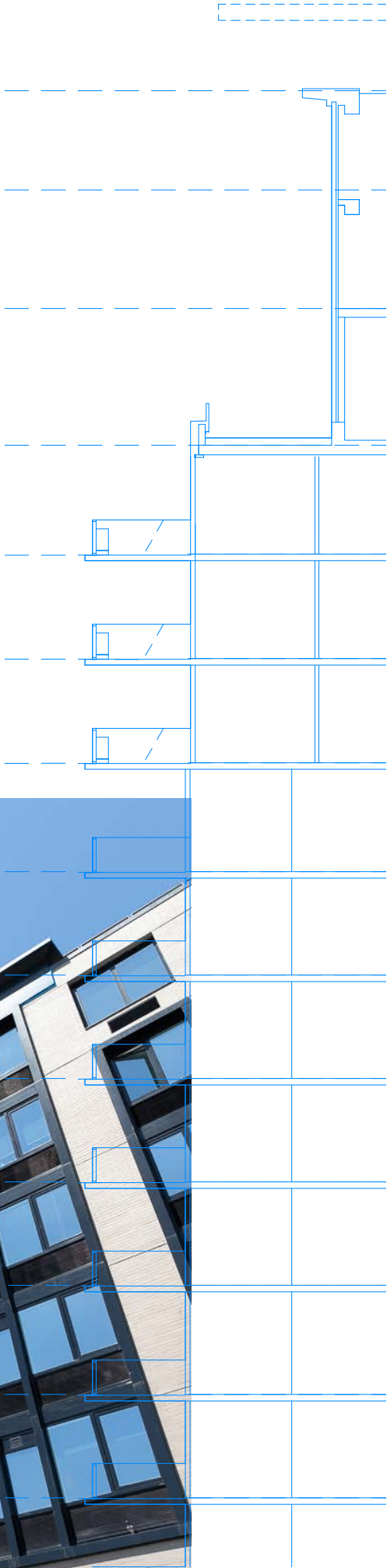
Services: Pre-construction Performance
Mock-up Testing
CA Services
Quality Control Inspection Services
Special Inspections



145 West Street

Location: 10 Huron Street, Brooklyn, NY 11222
Status: Completed
Client: Urban Development Partners
Architect: Ismael Leyva Architects
Use: Market-rate rental (residential)
Size: 45 Stories

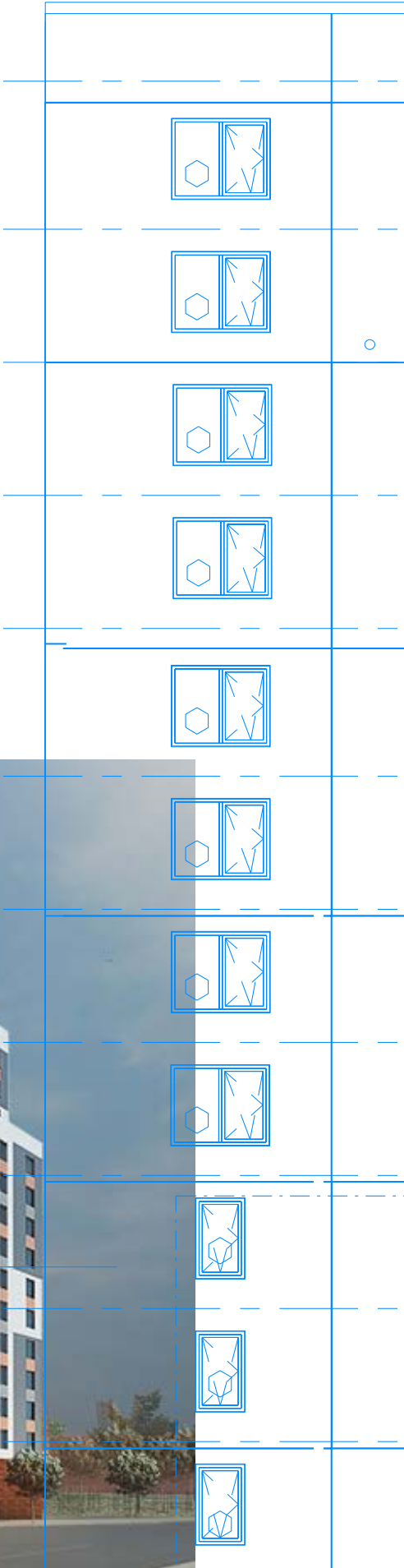
Services: Construction Document Review
Energy Analysis
Pre-construction Performance
Mock-up Testing
CA Services
Quality Control Inspection Services
Special Inspections



Morris Phase II

Location: 2956 Park Avenue, Bronx, NY
Status: Completed
Client: Omni New York, LLC
Architect: Curtis + Ginsberg Architects
Use: Residential (Affordable Housing)
Size: 15 Stories

Services: Construction Document Review
Energy Analysis
CA Services
Quality Control Inspection Services
Special Inspections.



The background features several large, solid blue geometric shapes. In the top left, there is a partial circular shape. On the right side, there is a large, irregular polygon. On the left side, there is a tall, narrow triangle. In the bottom right, there is a large, irregular polygon. The overall composition is minimalist and modern.

**134 W. 29th Street 12th Floor
New York, New York 10001**

**212-414-9623
info@cany.com**

Smart about buildings.