



Polymer JDBC Driver Installation Guide

Feature: Column Level Access

Polymer Driver connects to multiple databases. Polymer Server (running on client server). Based on user_rights, the query will be modified before being sent to the appropriate database. Results are retrieved and passed through.

Feature: Row-Count Level Access

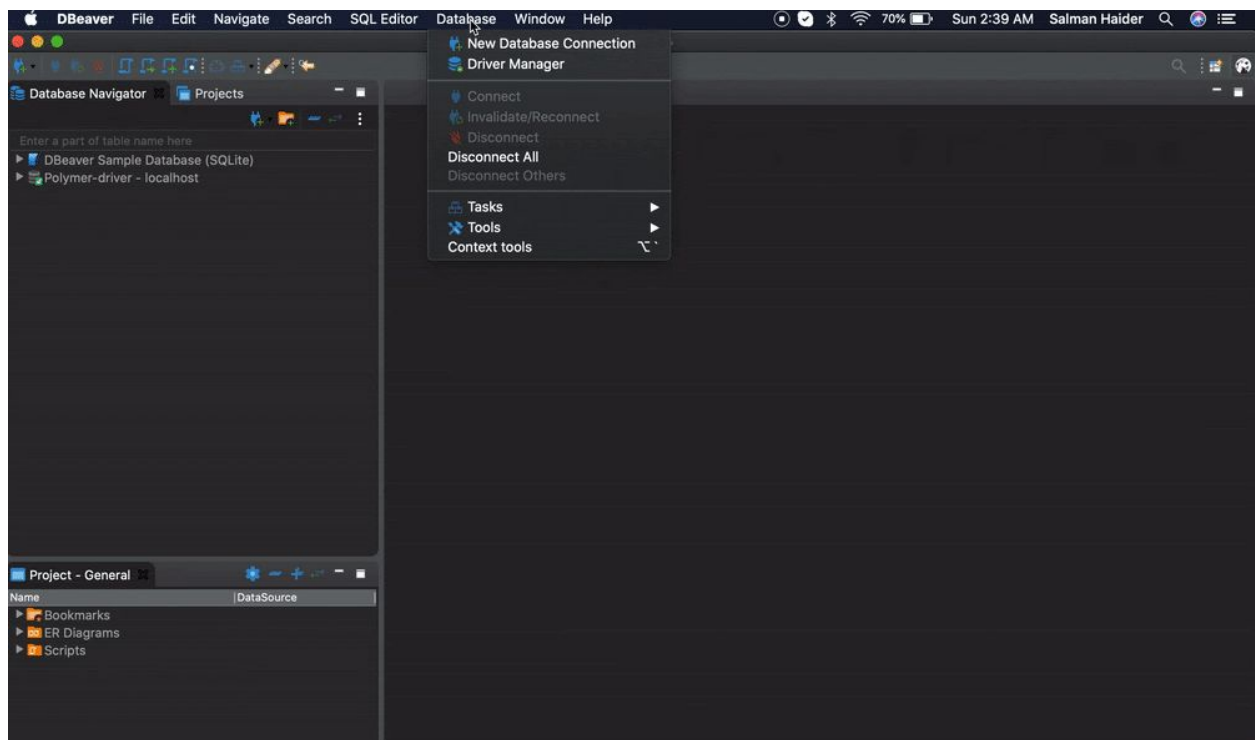
Row access on a per database level can be set for a 24hour period.

Integrate Polymer Driver:

Download Link for Driver

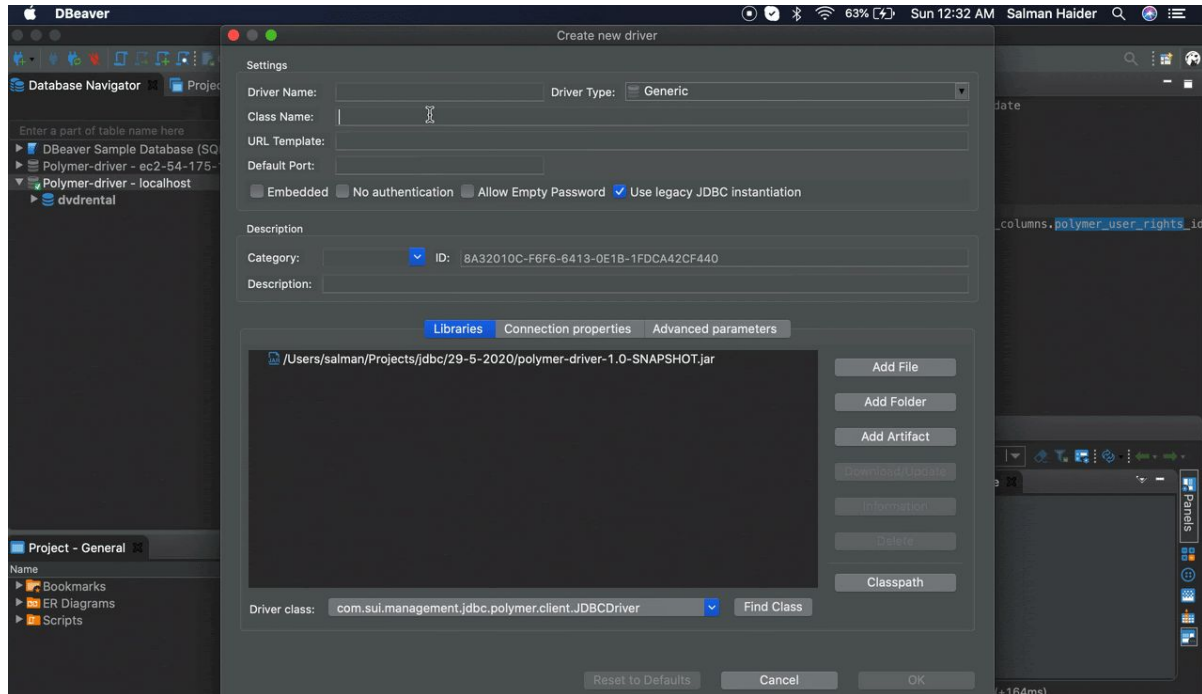
Download Polymer Driver Jar file and add in any SQL Client Application (eg: Dbeaver)

- Open DBeaver (or other tool) and then go to Database -> Driver manager
- Click on Add file, choose polymer-driver.jar and then on Find Class



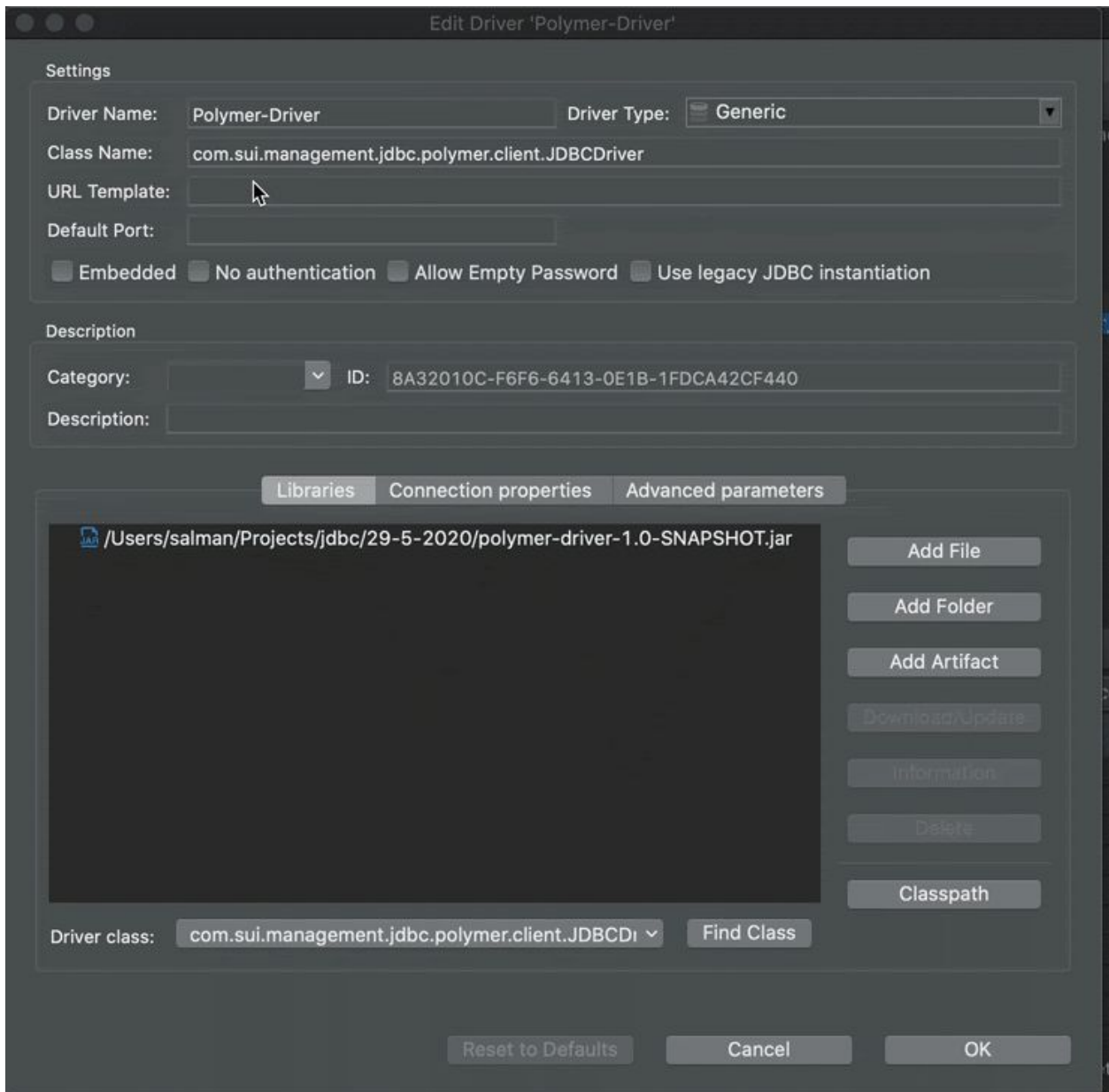
Add Driver ClassName:

- Choose correct class (com.sui.management.jdbc.polymer.client.JDBCDriver)



Add URL Template:

- Set driver name (i.e. Polymer-driver)
- URL template: `jdbc:polymer_jdbc:http://{host}[:{port}]`

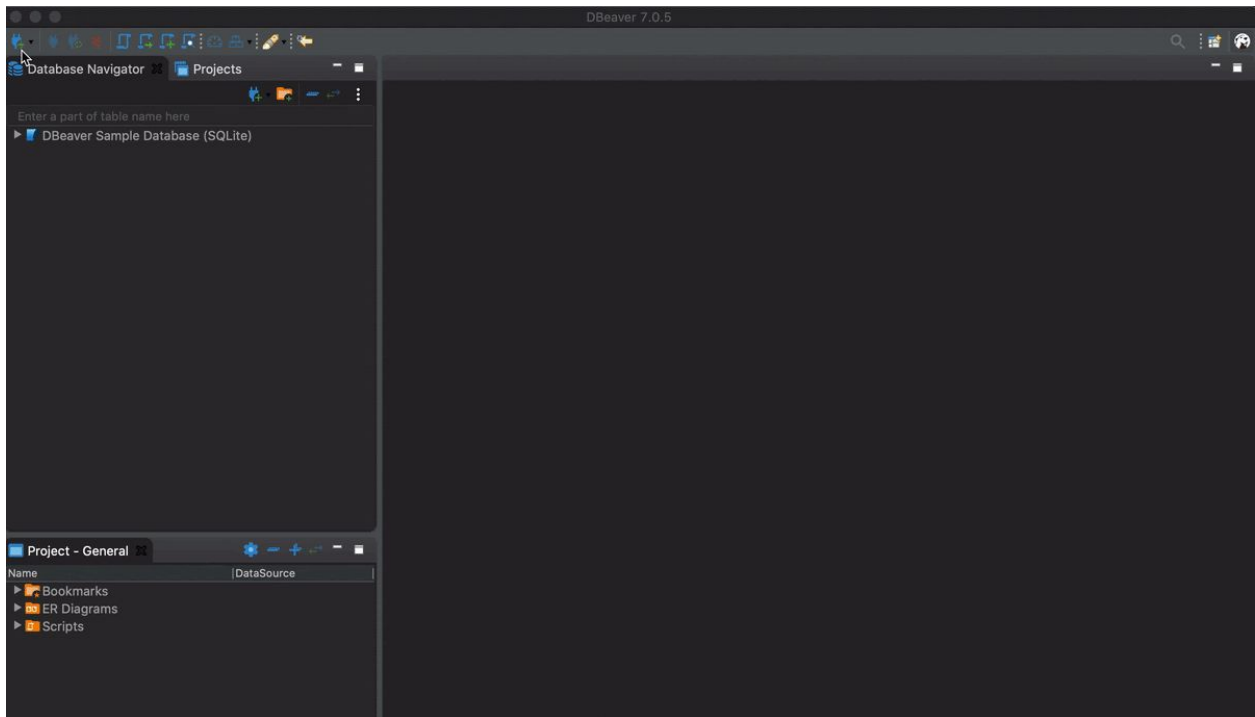


Click on OK
Polymer driver is successfully added

Create Connection Using Polymer Driver

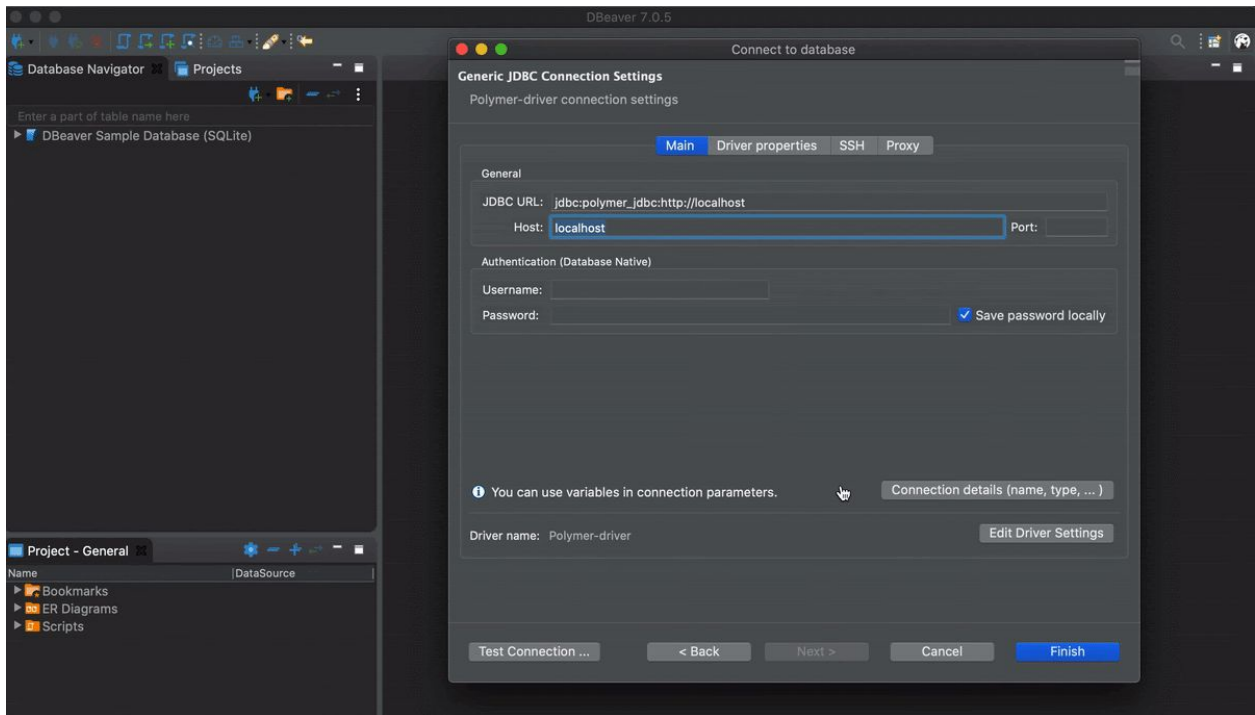
Click new Connection and find Polymer Driver you created:

- Find added driver (you can use search)



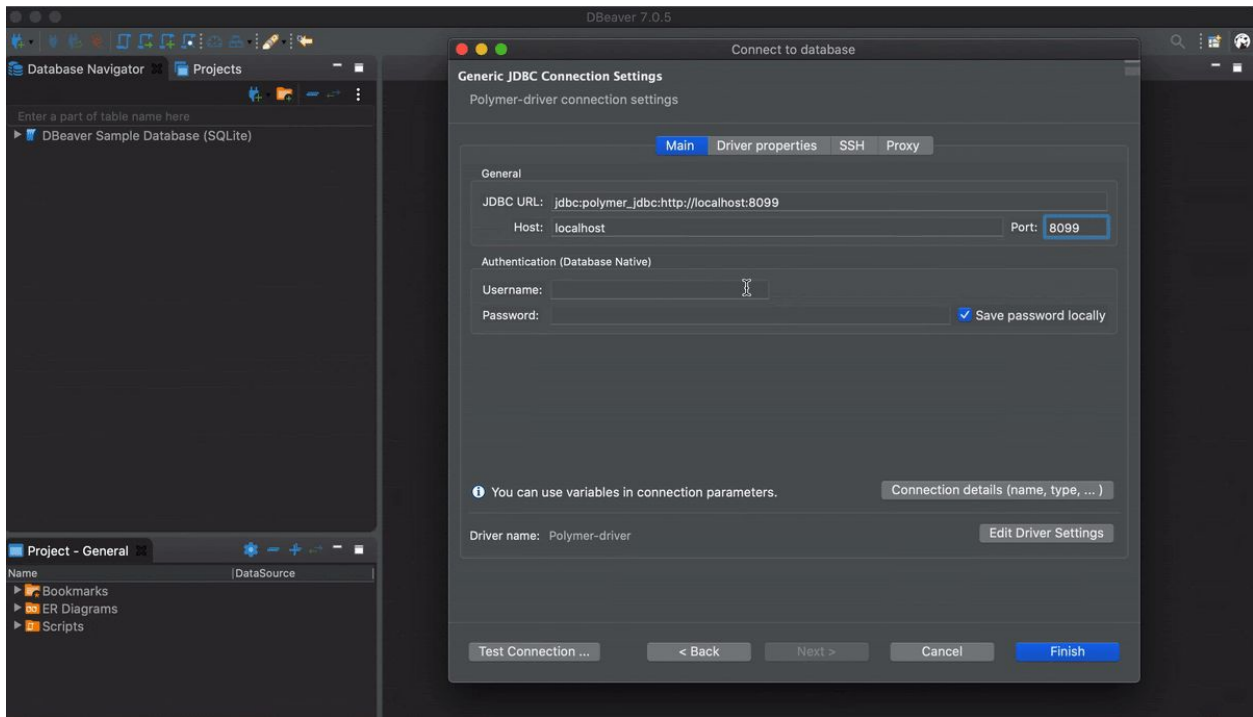
Add Port and url of Polymer Socket Server:

- Enter JDBC URL/Port

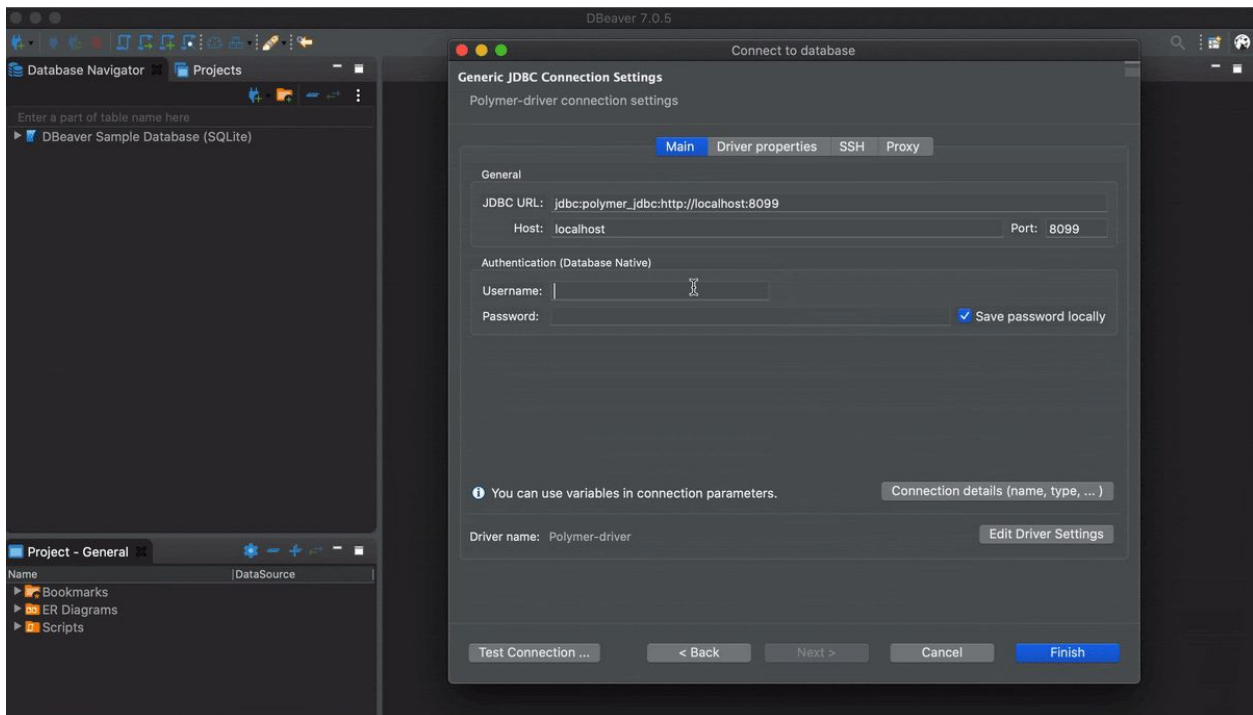


Add Username and Password:

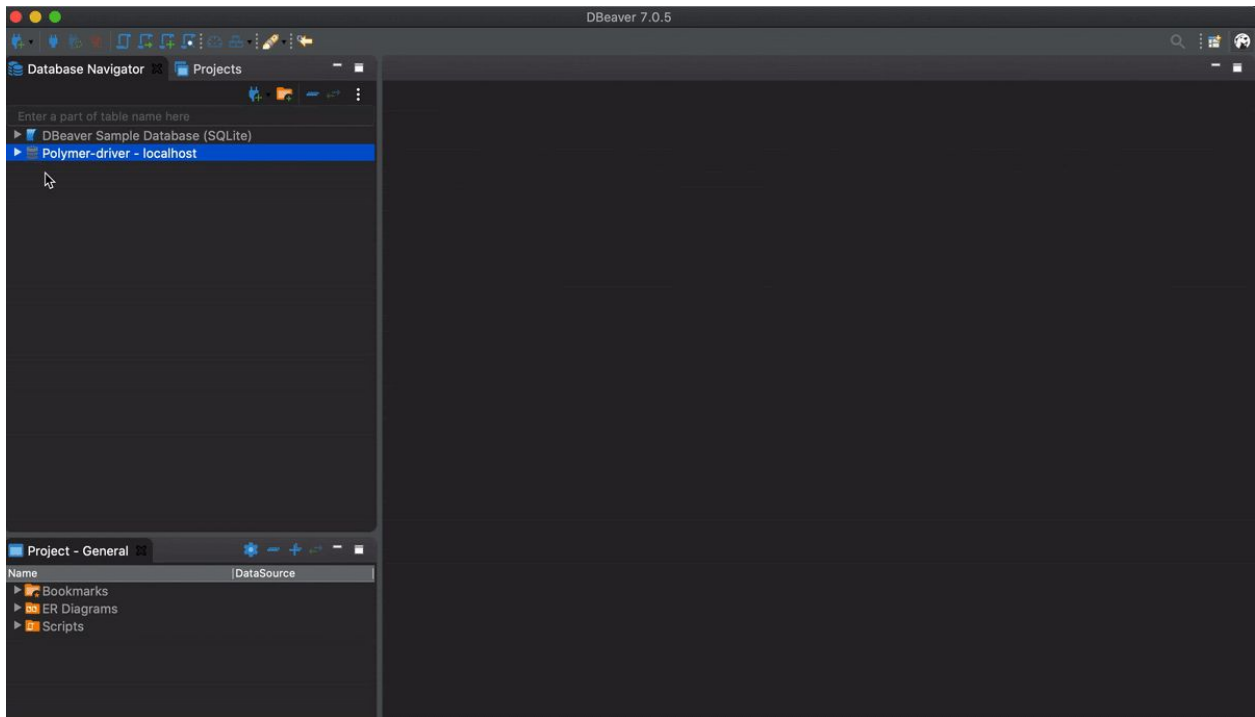
- Enter JDBC URL/Username/Password



Click Test Connection to connect:



Connection to Polymer Socket Server using newly integrated polymer driver :



Check the tables and start querying:

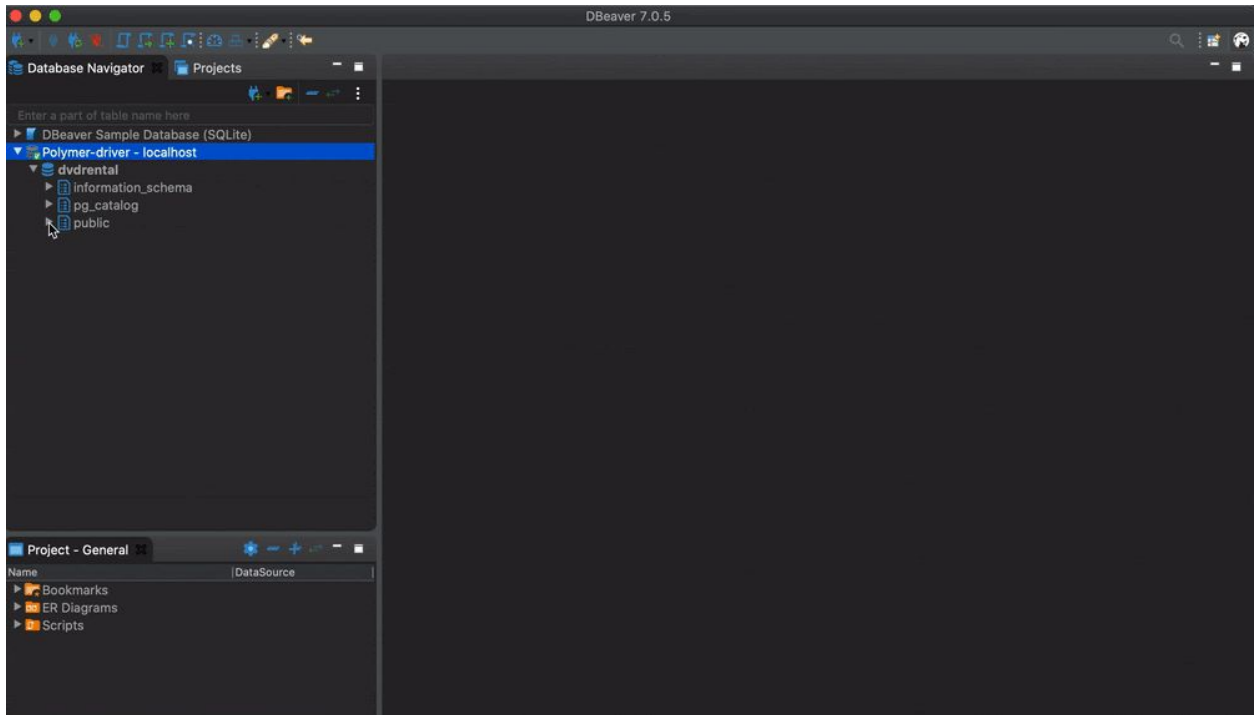
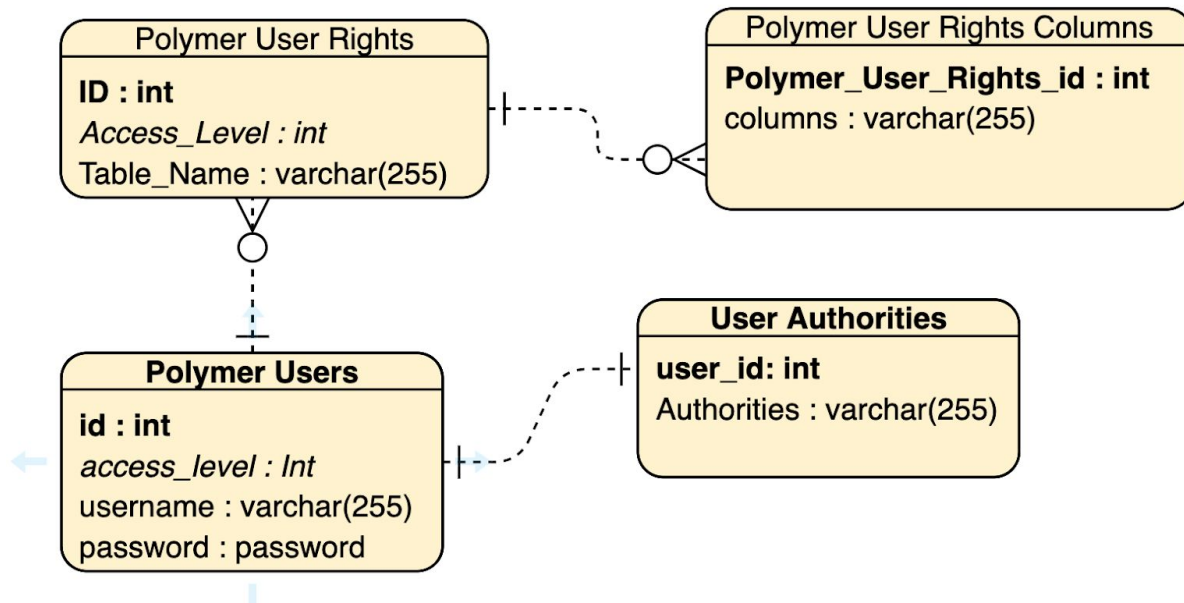


Table Schema for the configuration tables stored on Polymer server



Tables:

- **Polymer User:** This table contains the user credentials and level of access a user has.
- **Polymer User Authorities:** This table contains the Authorities information from which a user belongs to for example "Admin", "It Department", "Business Intelligence Department" etc.
- **Polymer User Rights:** Contains the table names under specific user's access
- **Polymer User Rights Columns:** Contains the columns of table user can access

Access Control mechanism

- A database user can only access columns defined by the Admin.
- An Admin user is recommended to have access level number "99".
- Users can still run ALL logical, algebraic & aggregate function queries on ALL tables and columns.