

# CURATED APERTURES

A guide to placemaking in a isolation



The post-physical contact world of COVID-19 has restricted us to our homes and has limited our interactions with others to the cameras on our devices.

Virtual interactions with family, friends, colleagues or lovers could call for entirely different settings.

This guide considers the constraints of the camera aperture in confined space and how it can inform a kind of micro-placemaking.

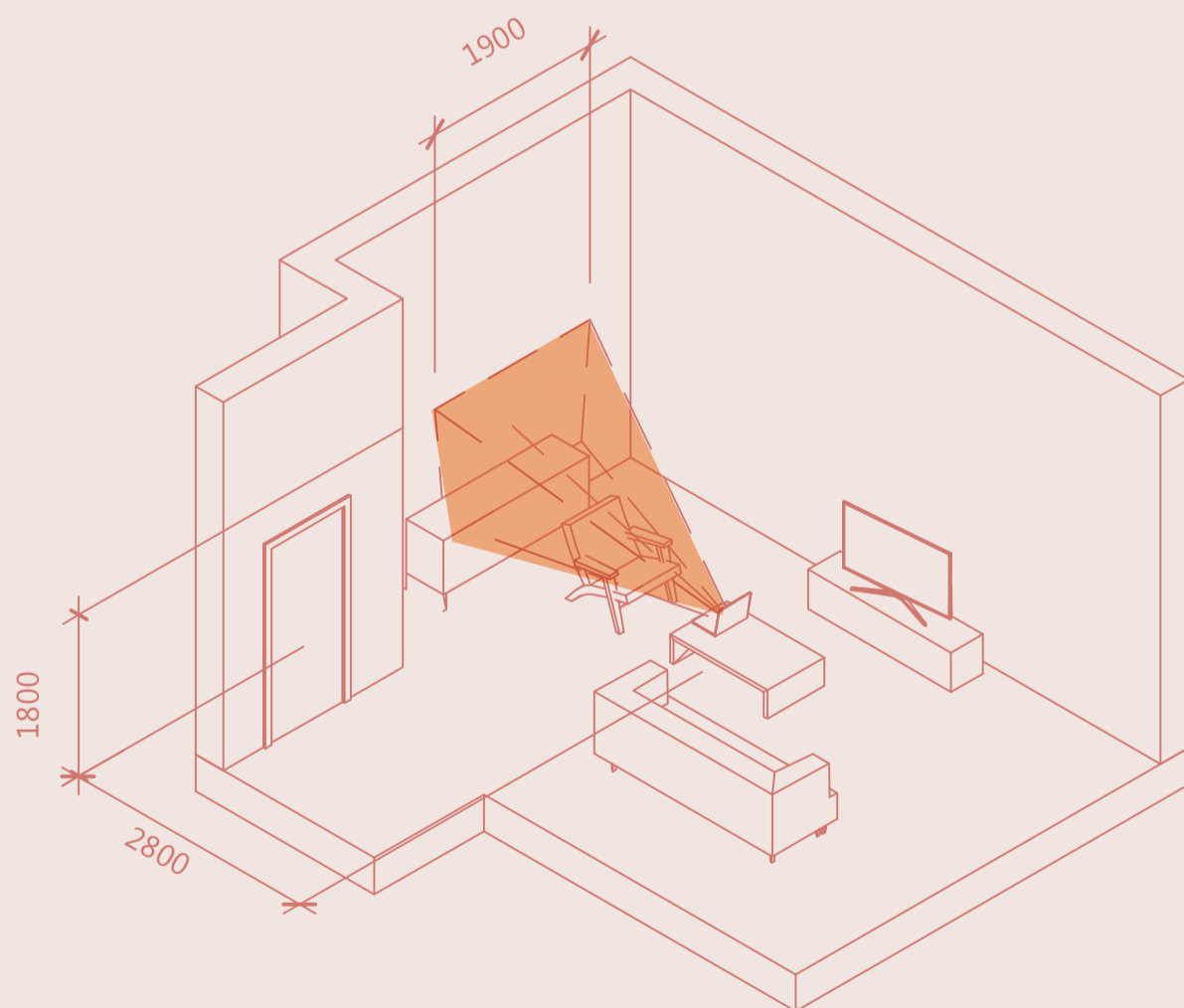


# APERTURE #1

MICROSOFT Surface 2: Webcam

Focal length: 35mm  
Angle of View: 50°  
Megapixels: 1.2  
Frame rate: 60 fps

Suggested activity: video conferencing  
Suggested platforms: zoom, houseparty, teams







# APERTURE #2

APPLE iPhone 11 Pro : rear camera

Focal length: 26mm / 52mm / 13mm

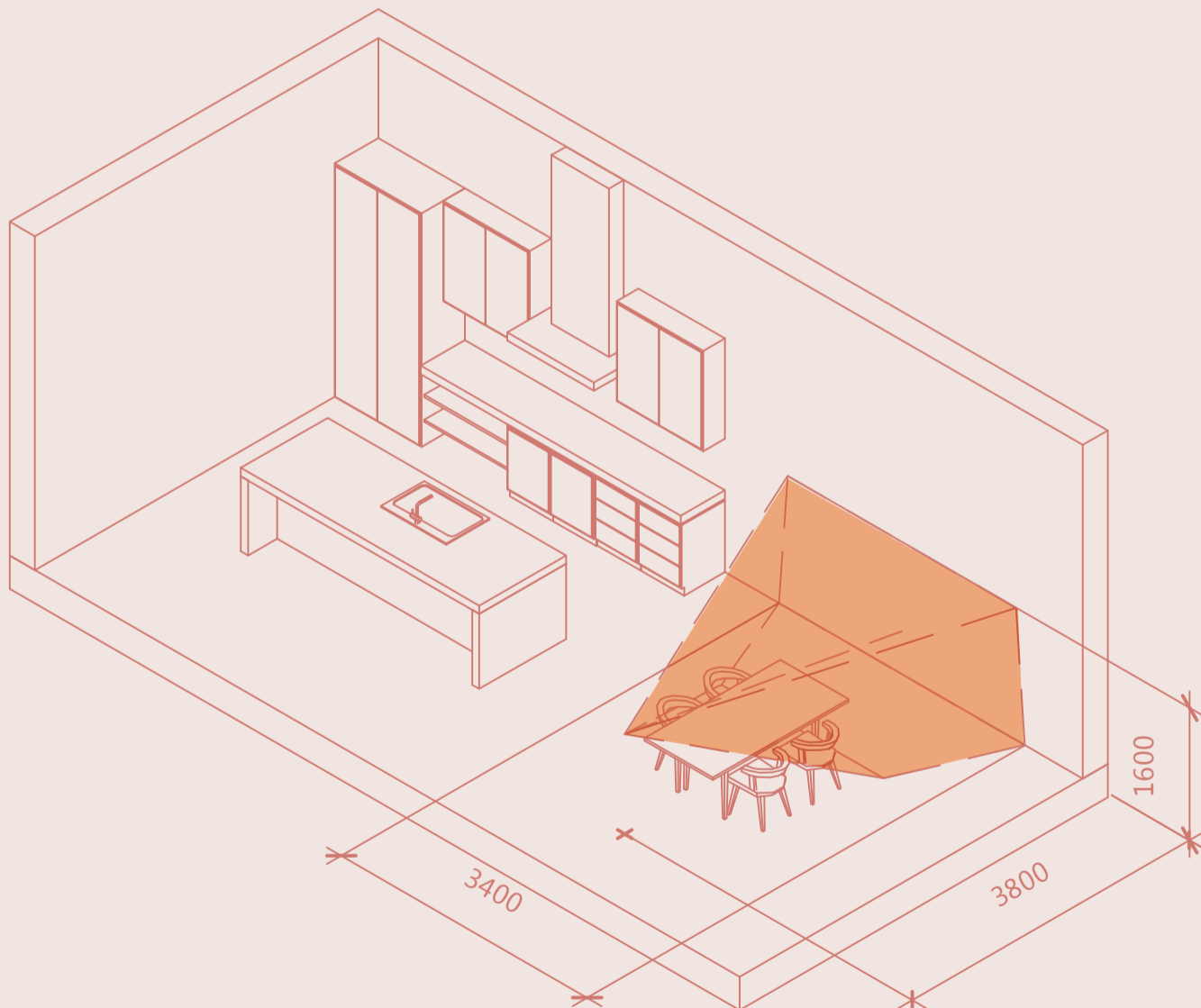
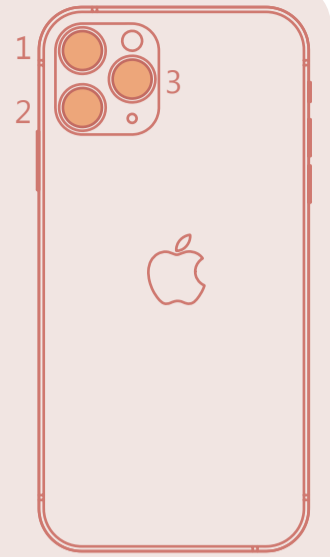
Angle of View: 45° / 77° / 123°

Megapixels: 12 / 12 / 12

Frame rate: 30 / 60 / 120 fps

Suggested activity: bathroom mirror selfies

Suggested platforms: snapchat, tick tock, tinder







# APERTURE #3

SAMSUNG Galaxy S10 : Rear camera

Focal length: 26mm / 52mm / 12mm

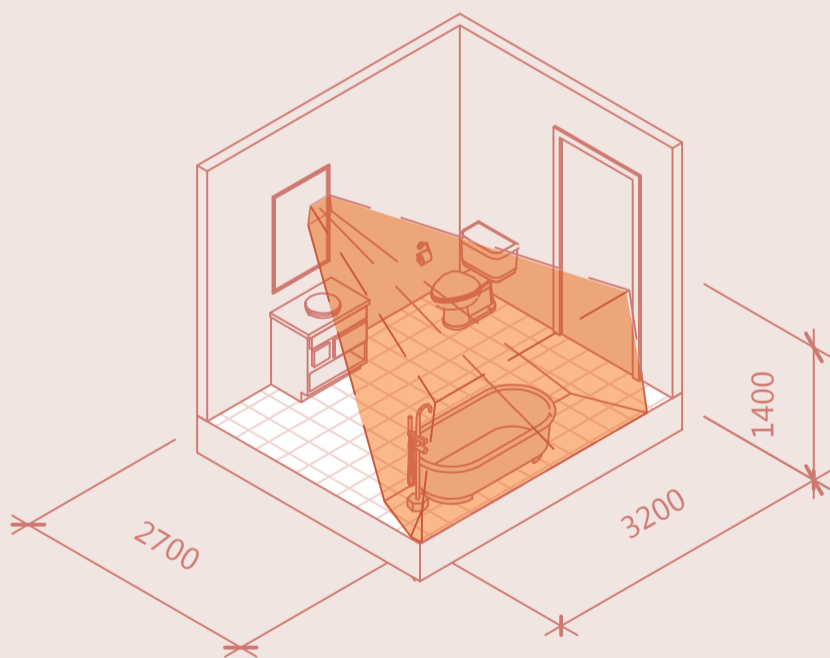
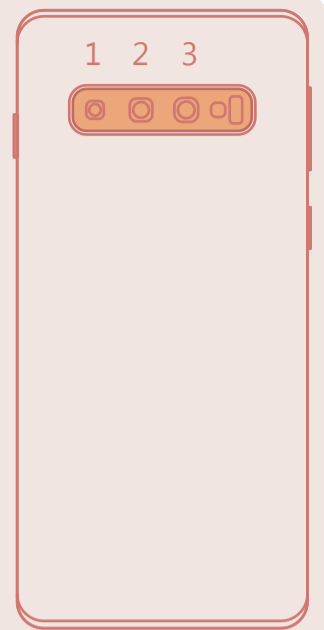
Angle of View: 45° / 77° / 123°

Megapixels: 12 / 12 / 16

Frame rate: 30 / 60 / - fps

Suggested activity: bathroom mirror selfies

Suggested platforms: snapchat, tick tock, tinder







# APERTURE #4

CANON t7i : 85mm lens

Focal length: 29-88mm

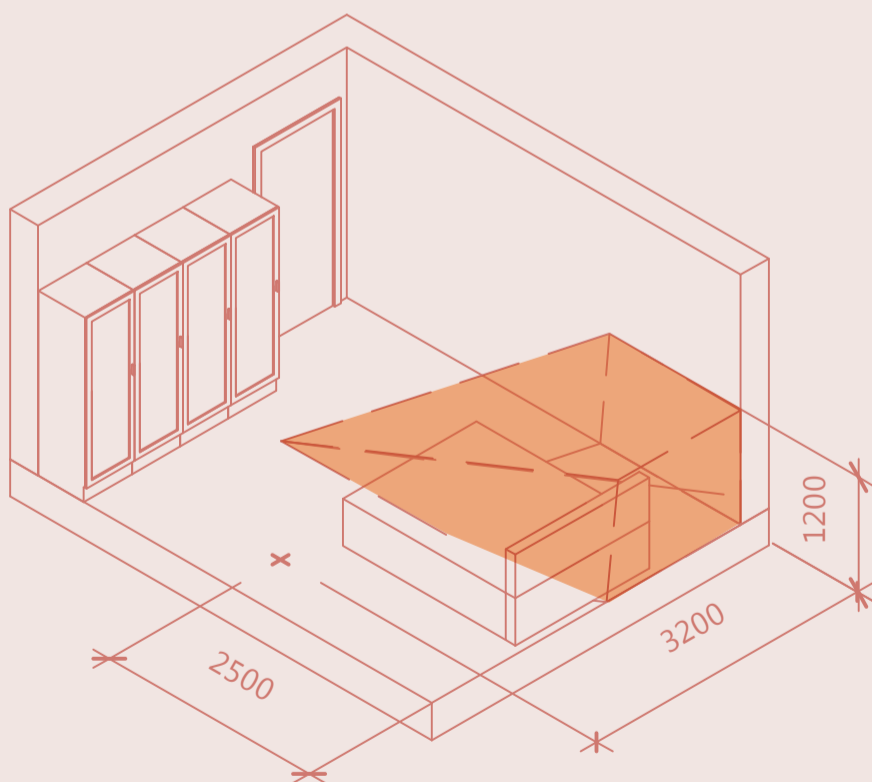
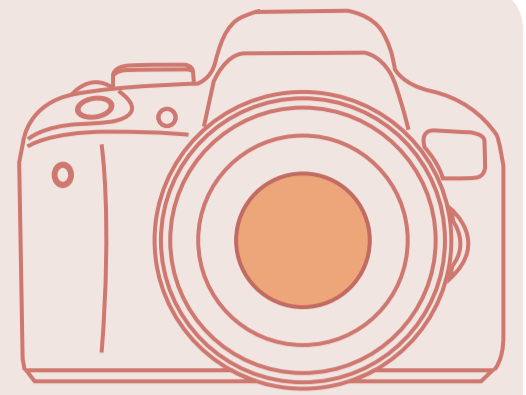
Angle of View: 170°

Megapixels: 24.2

Frame rate: 29.97 fps

Suggested activity: home movies

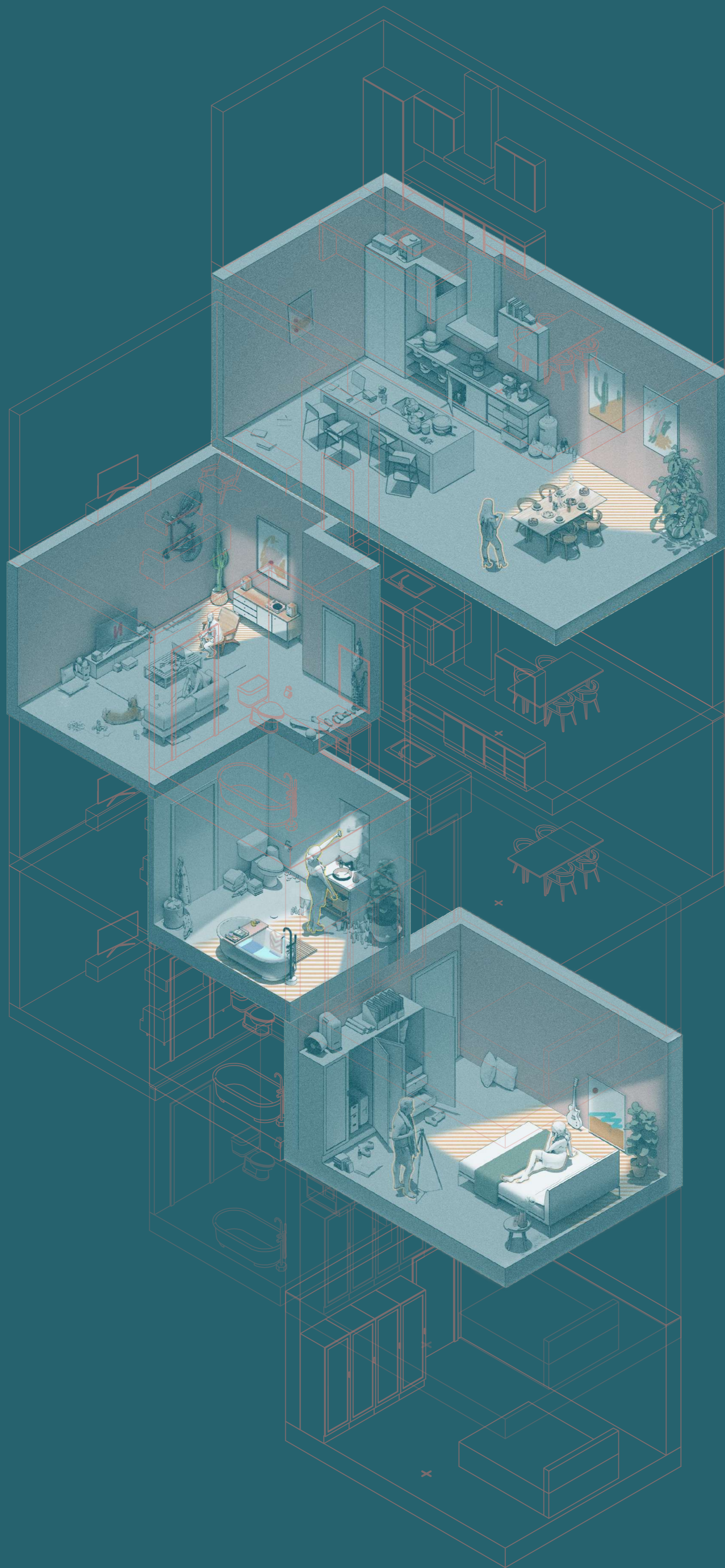
Suggested platforms: youtube, vimeo, pornhub











## CURATED APERTURES:

A guide to micro-interventions in a post-contact world

Daniel Terry : NSW REG NO. 10511



