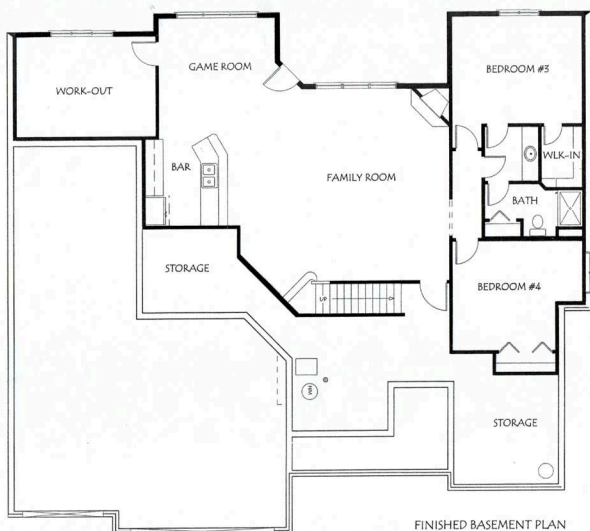
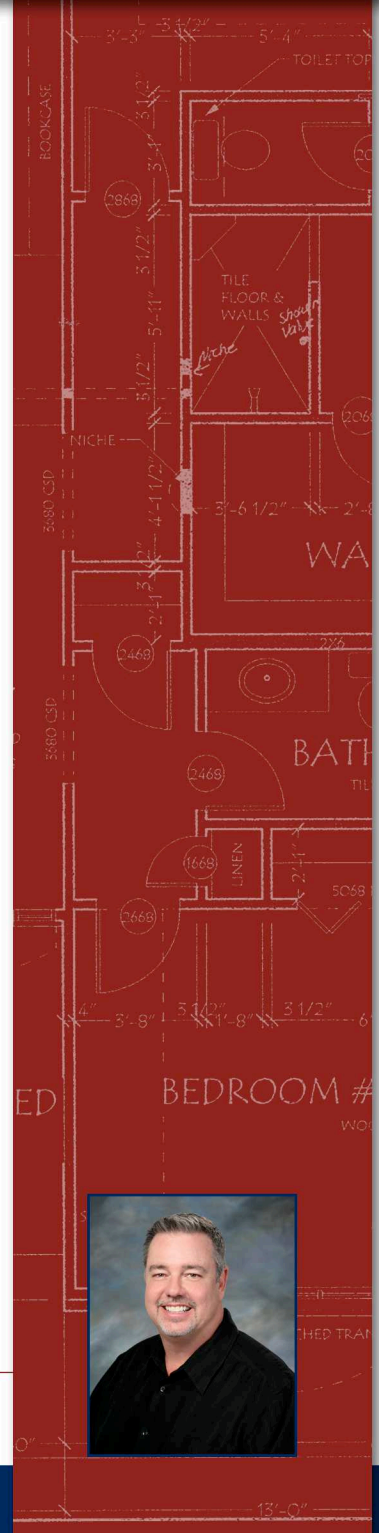


# The 2195



## Standard Features:

- 8" Hardi-Plank Concrete Lap Siding
- Heritage 30 Year Shingle Roof
- Pella Clad Windows
- Sprinkler System
- 9 Foot Poured Foundation
- 9'-11' Ceilings
- Oversized Painted Millwork
- Custom Birch Cabinets
- 36"/42" Uppers in Kitchen
- Flat Panel Cabinet Doors
- Oversized Island
- Soft Close Drawers
- Granite Counters in Kitchen & on Bathroom Vanities
- Tile Backsplash in Kitchen
- Hidden Walk-in Pantry
- Gas Fireplace with Stone to Ceiling
- Wood Floors-Kitchen, Dinette
- Tile Floors-Bathrooms & Laundry
- Jacuzzi Whirlpool Tub
- Walk-in Tile Shower
- 1600 Finished Square Feet in Lower Level
- Birch/Granite Wet Bar
- Blown in Batt Insulation
- Rebar in Driveway, Garage & Patio
- Curb Grind
- 14 X 14 Patio
- Insulated Steel Garage Doors
- Garage Has Finished Drywall & Paint
- 50 Gallon Water Heater
- Power Humidifier
- 95% Lennox Furnace & 13 SEER A/C
- Rounded Drywall Corners
- Passive Radon Rough-in



Contact me to help you *build* your dream home!

**BH HS**  
BERKSHIRE HATHAWAY  
HomeServices  
Ambassador Real Estate

402.850.0731

*Brian Wilson*  
brian.wilson@bhhsamb.com

albeltcustomhomes.com