



# Whitman County Voluntary Stewardship Program

Help Promote Whitman County Agriculture by Sharing  
Stewardship Strategies!

**SAC and TP Meeting**  
**Thursday, May 12<sup>th</sup>, 2022**

Bradley J. Johnson  
Whitman County VSP Coordinator  
509-552-9562  
[bradleyj@palousecd.org](mailto:bradleyj@palousecd.org)







# Whitman County

## Voluntary Stewardship Work Plan

- Local Work Group developed Work Plan for Whitman County
- Geared towards maintain the viability of agriculture through stewardship practices that protect and restore critical areas
- Working with landowners to share stewardship successes
- Relies solely on voluntary participation
  - Spread the word, promote agriculture, share with neighbors
- 2 Year Status Report – Completed
- 5 Year Status Report – Completed
- 2<sup>nd</sup> 2 Year Status Report - Completed





# Sustainable Agriculture in Whitman County

- VSP Can help farmers/ranchers at the local level set the stage
- Gather voluntary information on land stewardship
- One farm at a time
  - Previous practices
  - Current practices
  - Future stewardship goals for your land
  - What type of help is needed to accomplish stewardship goals
    - Financial, technical, etc.
- Reporting Requirements of VSP
  - Reports are on WRIA level – no landowner info shared
  - Stewardship completed and Critical Areas Protected







# Whitman County VSP

- We are following what the law requires for VSP
- Voluntary stewardship practice can protect and/or restore critical areas
- Voluntary completion of Action Map by farmers and ranchers
- Participation, Implementation, Effectiveness, Aerial Imagery for landscape change and Statistical Significance Monitoring
- Use monitoring data to validate whether Stewardship Actions are protecting and/or restoring critical area functions and values
- Not using project locations or parcel numbers







# What Information is Collected?


- Based on WRIA's, 3 WRIA's within Whitman County
- Critical Areas are documented in Work Plan
- Voluntary Stewardship Practices that protect and/or restore critical areas functions and values from Work Plan
- Report on acres/feet or number of Stewardship Practices by WRIA and which critical areas they protect and/or restore
- Reports are based off what has occurred by WRIA
- Compare stream flows, water temperatures, water quality data, paired watershed studies and edge of field monitoring
- All landowner information is protected and reported at WRIA level.





Whitman County Voluntary Stew...

whitmancountyvsp.mapseed.org/page/about


 **Whitman County**  
Voluntary Stewardship Program


ABOUT | VSP ASSISTANCE | DASHBOARD

SIGN IN

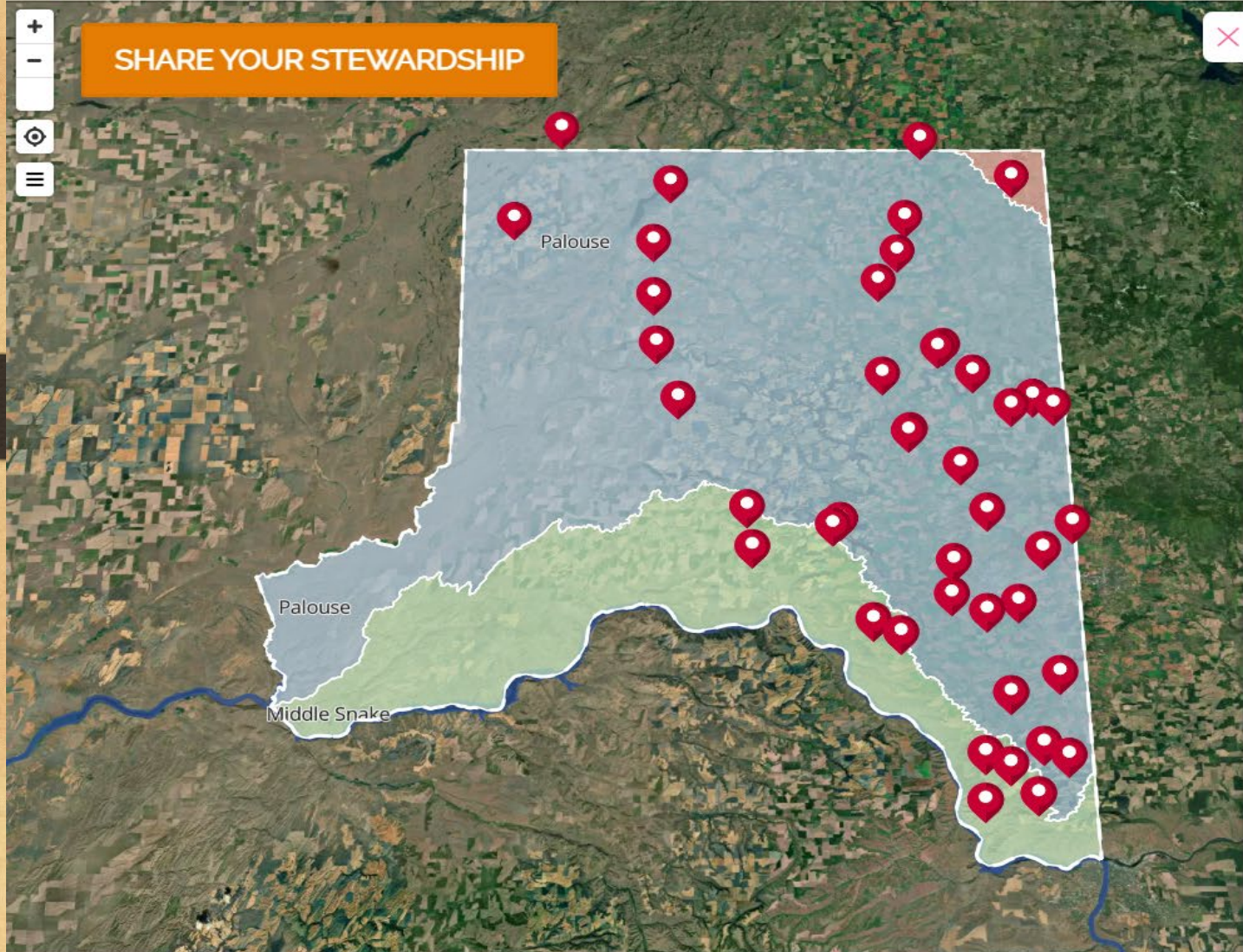
+

-






SHARE YOUR STEWARDSHIP



×

## Welcome Whitman County Voluntary Stewards!

GET STARTED



Whitman County Voluntary Stewardship Program (VSP) provides an innovative approach for reporting the protection of critical areas on agriculture lands that enhance our environment through voluntary measures, while promoting agriculture viability. VSP voluntarily collects previous and on-going stewardship data from all interested landowners, which helps document VSP participation and the importance of agriculture viability.

Visit [www.whitmancountyvsp.com](http://www.whitmancountyvsp.com) for more information

**Help promote Whitman County agriculture by sharing stewardship strategies!**

**VSP success relies on voluntary participation by landowners!**

**Whitman County VSP appreciates your time sharing stewardship practices!**

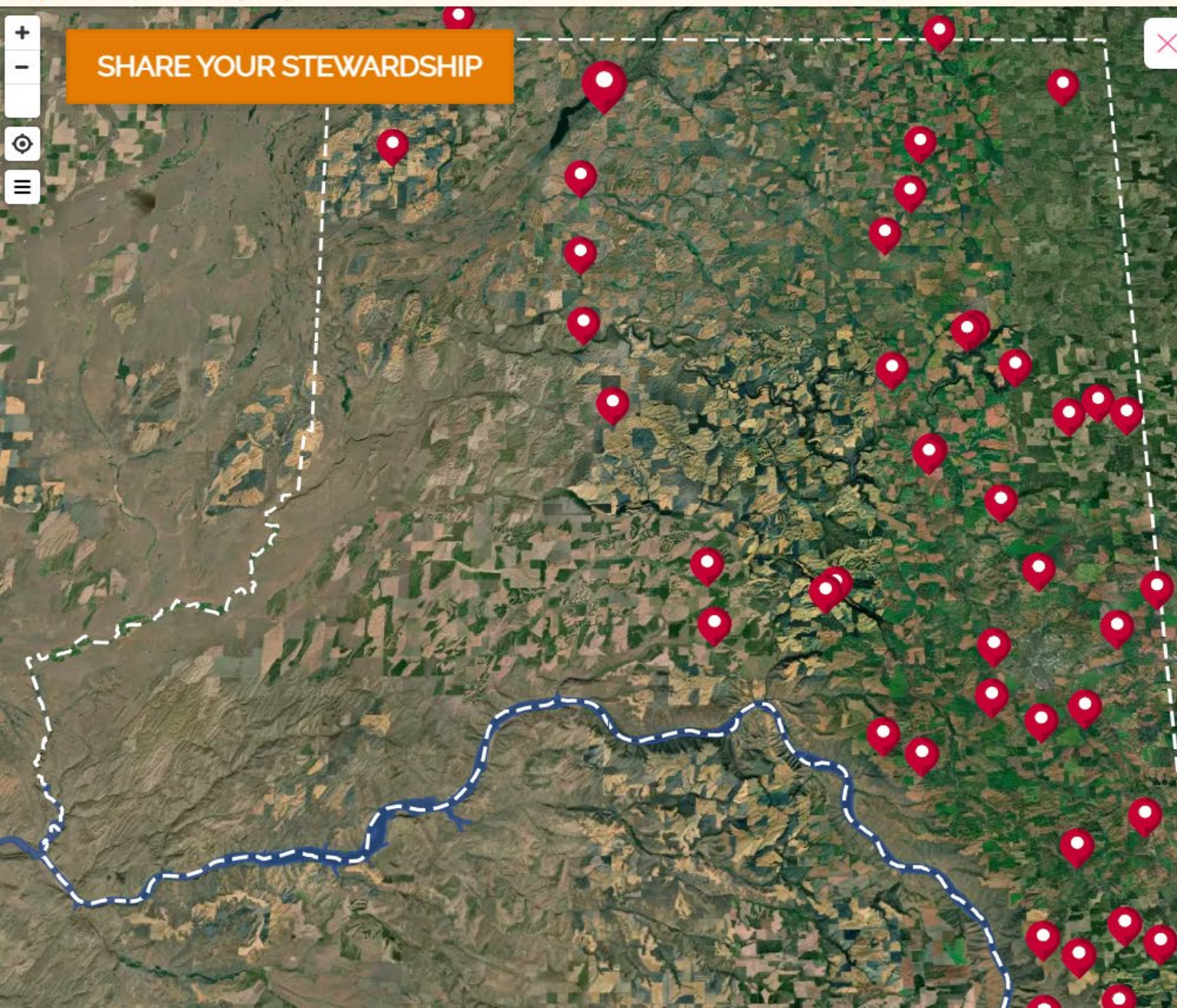
Click Get Started to begin!

GET STARTED





SHARE YOUR STEWARDSHIP



## 9 Stewardship Actions

*For Palouse Watershed*



Residue redistribution, (picture), Composting, no till, working buffer strips, cover crops

No till/direct seed	1100 acres
Pest management	1100 acres
Nutrient management	1100 acres
Managed grazing	1000 acres
Cover crops	25 acres
Mulching	100 acres



SHARE YOUR STEWARDSHIP



Welcome Whitman County  
Voluntary Stewards!

GET STARTED



Whitman County Voluntary Stewardship Program (VSP) provides an innovative approach for reporting the protection of critical areas on agriculture lands that enhance our environment through voluntary measures, while promoting agriculture viability. VSP voluntarily collects previous and on-going stewardship data from all interested landowners, which helps document VSP participation and the importance of agriculture viability.

Visit [www.whitmancountyvsp.com](http://www.whitmancountyvsp.com) for more information

Help promote Whitman County agriculture by sharing stewardship strategies!

VSP success relies on voluntary participation by landowners!

Whitman County VSP appreciates your time sharing stewardship practices!

Click Get Started to begin!

GET STARTED

Example of 1 of 5 Critical Areas – Geologically Hazardous Areas



VSP Reports - Whitman County

EXPORT RAW CSV DATA >

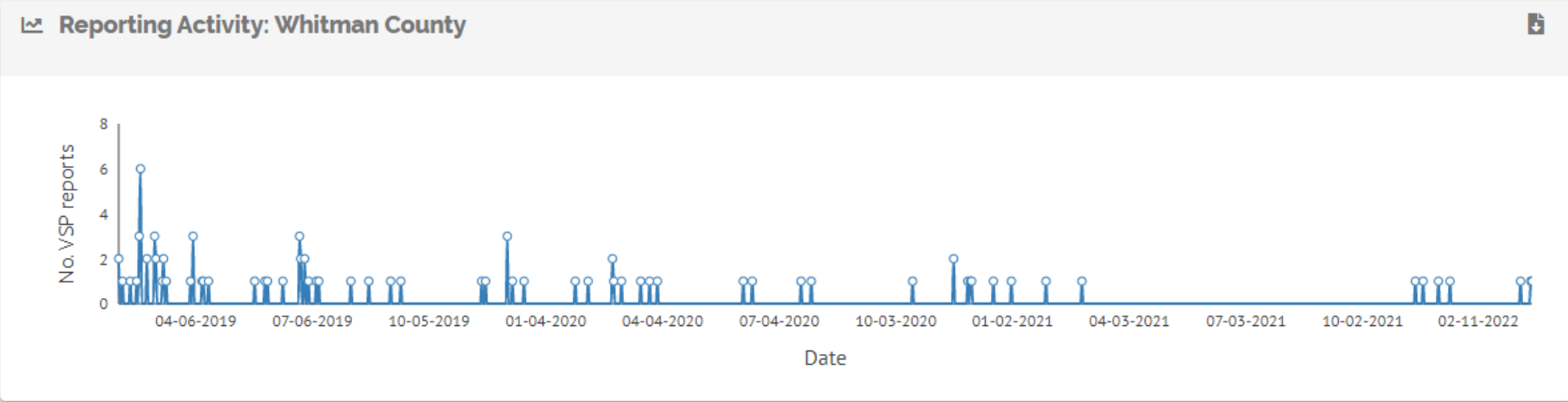
Overview

TOTAL VSP REPORTS

87

TOTAL STEWARDSHIP ACTIONS

653



Stewardship Practices Detail: Whitman County

Date range

☒ All dates ☐ Pre-2021 ☐ 2021 and later

Stewardship Category	Middle Snake WRIA	Hangman WRIA	Palouse WRIA	Countywide	2026 BENCHMARK OBJECTIVE	2026 BENCHMARK STATUS	2026 ENHANCED OBJECTIVE	2026 ENHANCED STATUS
Total reports by area (all dates)	22 REPORTS	1 REPORTS	64 REPORTS	87 REPORTS	0	N/A	0	N/A
Conventional Farming: 25	9,880 ACRES	160 ACRES	15,091 ACRES	25,131 ACRES	0 ACRES	N/A	0 ACRES	N/A
Residue & Tillage Management: 66 NO-TILL/DIRECT SEED/2-PASS	16,738 ACRES	160 ACRES	73,696 ACRES	90,594 ACRES	10,507 ACRES	Target met	59,537 ACRES	Target met
Pest Management: 76	22,928 ACRES	160 ACRES	72,697.71 ACRES	95,785.71 ACRES	5,238 ACRES	Target met	29,683 ACRES	Target met



Date

☰ Stewardship Practices Detail: Whitman County

Date range

☒ All dates ☐ Pre-2021 ☐ 2021 and later



Stewardship Category	Middle Snake WRIA	Hangman WRIA	Palouse WRIA	Countywide	2026 BENCHMARK OBJECTIVE	2026 BENCHMARK STATUS	2026 ENHANCED OBJECTIVE	2026 ENHANCED STATUS
Total reports by area (all dates)	22 REPORTS	1 REPORTS	64 REPORTS	87 REPORTS	0	N/A	0	N/A
Conventional Farming: 25	9,880 ACRES	160 ACRES	15,091 ACRES	25,131 ACRES	0 ACRES	N/A	0 ACRES	N/A
Residue & Tillage Management: 66 NO-TILL/DIRECT SEED/2-PASS	16,738 ACRES	160 ACRES	73,696 ACRES	90,594 ACRES	10,507 ACRES	Target met	59,537 ACRES	Target met
Pest Management: 76	22,928 ACRES	160 ACRES	72,697.71 ACRES	95,785.71 ACRES	5,238 ACRES	Target met	29,683 ACRES	Target met
Nutrient Management: 63	18,988 ACRES	160 ACRES	76,369 ACRES	95,517 ACRES	9,778 ACRES	Target met	55,409 ACRES	Target met
Range Management: 25 MANAGED GRAZING	5,602 ACRES	0 ACRES	6,120 ACRES	11,722 ACRES	1,000 ACRES	Target met	6,500 ACRES	Target met
Range Management: 18 RANGE PLANTINGS	1,190.5 ACRES	0 ACRES	152 ACRES	1,342.5 ACRES	300 ACRES	Target met	1,200 ACRES	Target met
Range Management: 28 WATERING FACILITIES	46 FACILS.	0 FACILS.	67 FACILS.	113 FACILS.	10 FACILS.	Target met	20 FACILS.	Target met
Range Management: 6 WATER WELLS	8 WELLS	0 WELLS	5 WELLS	13 WELLS	3 WELLS	Target met	10 WELLS	Target met



# Questions

- [www.whitmancountyvsp.com](http://www.whitmancountyvsp.com) Click on Share Your Stewardship
- VSP Co-Leads
  - **Brad:** 509-552-9562 - [bradleyj@Palousecd.org](mailto:bradleyj@Palousecd.org)
  - **Andrew:** 509-592-5333 – [awolfe@rocklakecd.org](mailto:awolfe@rocklakecd.org)
  - **Casey:** 509-285-5122 – [casey.lowder@pinecreekcd.org](mailto:casey.lowder@pinecreekcd.org)
  - **Glenn:** 707-761-1422 - [glenn.mitchell5220@gmail.com](mailto:glenn.mitchell5220@gmail.com)
- Whitman County Cattlemen's Association
- Whitman County Farm Bureau
- Whitman County Wheat Growers Association

VSP relies on voluntary participation of landowners

