



Horizon Integrator Update

14th February 2017



Contents

Introduction	5
<i>Integrator Version 2.6</i>	5
<i>2.6 Known Behaviours</i>	5
<i>Integrator Version 2.4 – Withdrawal from support</i>	6

Introduction

Horizon Integrator version 2.6 will be available from the 17th February 2017. This version will support .NET 4.2 framework as standard as opposed to .NET 4.0 in the previous version and the update will enable access to the new features that the framework provides but most importantly includes support for TLS 1.2.

This new Integrator version is vital for the continued support of Microsoft Dynamics CRM 2016 Office 365 edition and Salesforce (classic add-in). Any users of the classic Salesforce add-in must install this version by March 4th 2017. This is due to Salesforce deprecating support for TLS 1.0.

Version 2.5 will continue to work as normal for all other CRM users and can be upgraded if preferred.

Integrator Version 2.6

The latest version of Horizon Integrator will also include the following 2 additional CRM integrations

Servicemax by 1 2 Access

Desk.com

2.6 Known Behaviours

Version 2.6 resolves the following known behaviours

- Company Directory not available in Current Horizon Version
- Company Directory will not work > 2000 records in BW R21
- Slow start up if Horizon Directory is large

For all the above three issues, Integrator 2.6 can now download large Company directories and has been tested with 10000 entries. The start-up time was noted at a maximum of 20 seconds across the Gamma network.

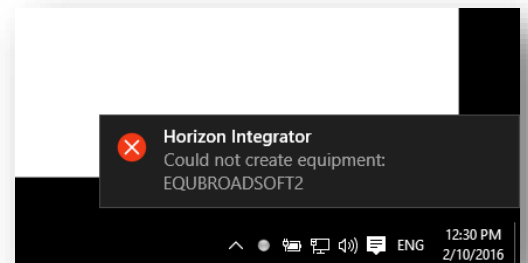
There is a new behaviour to note:

The following error message may briefly appear on the first run of the Integrator 2.6 after updating from Integrator 2.4:

If the user is not signed back in automatically after upgrading, the user will need to access the configuration page and click the save button manually.

The error will quickly disappear and will not reappear on any subsequent start of Integrator.

Full details are available in the Horizon Integrator 2.6 user guide which can be found on the Gamma Academy.



Integrator Version 2.4 – Withdrawal from support

From the 1st April 2017 Gamma will no longer support Horizon Integrator on version 2.4 or below, all subscribers on this version will need to upgrade to the latest version of the Horizon Integrator by the 31st March 2017.

2.4 users will need to upgrade to the latest version of the Integrator in order to continue to use the service from the 1st April 2017 onwards.

Details of how to upgrade can be found in the user guide on the knowledge base but please note the above 2.6 behaviour.