

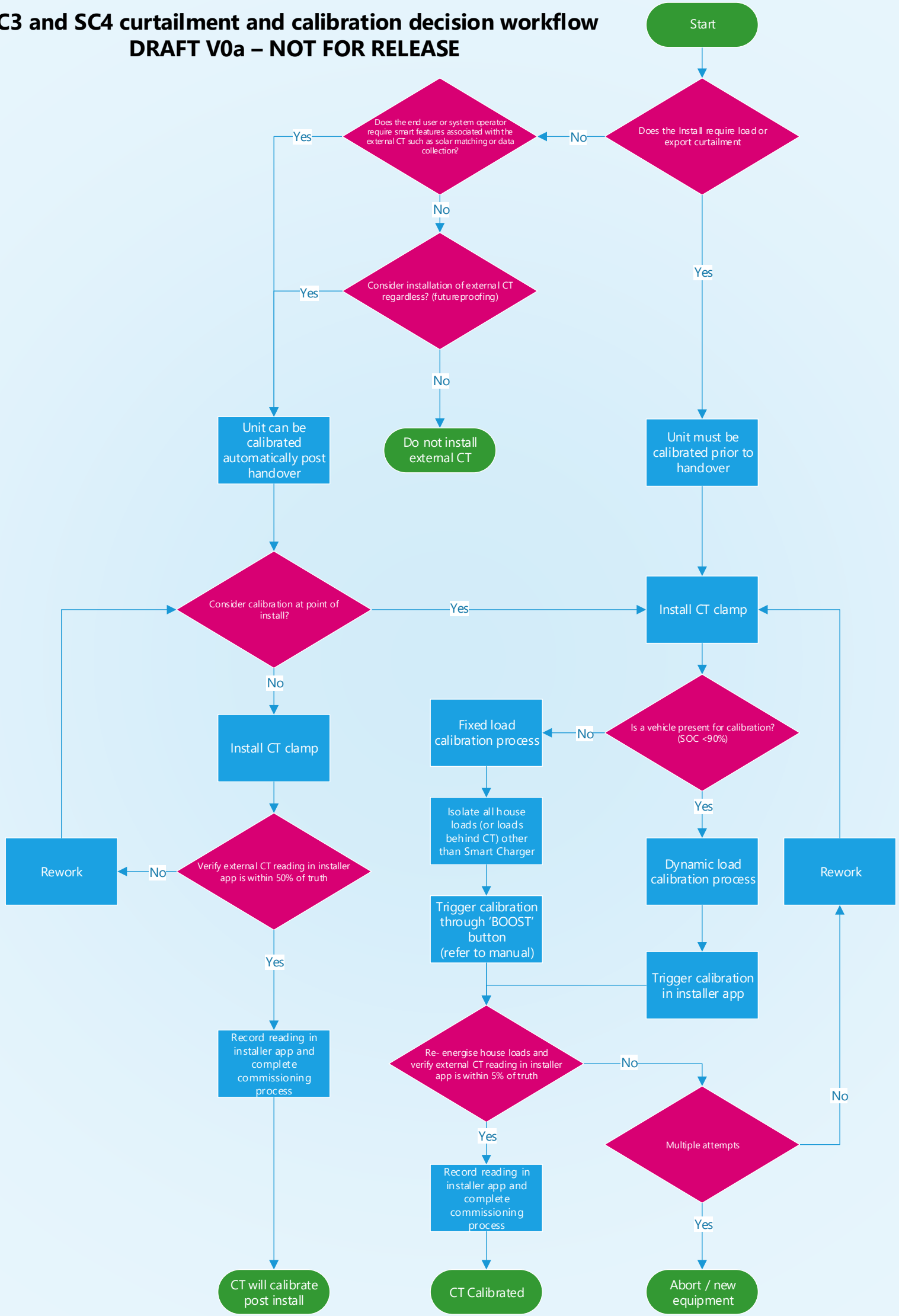


# **Curtailment & Calibration**

## **Decision Workflow**

# SC3 and SC4 curtailment and calibration decision workflow

## DRAFT V0a – NOT FOR RELEASE



Start

Does the Install require load or export curtailment?

Yes

Unit must be calibrated prior to handover

Install CT clamp

Is a vehicle present for calibration? (SOC <90%)

No

Fixed load calibration process

Isolate all house loads (or loads behind CT) other than Smart Charger

Trigger calibration through 'BOOST' button (refer to manual)

Dynamic load calibration process

Trigger calibration in installer app

Re-energise house loads and verify external CT reading in installer app is within 5% of truth

Yes

Record reading in installer app and complete commissioning process

CT Calibrated

Multiple attempts

Yes

Abort / new equipment

No

Rework

Rework

CT will calibrate post install

Consider calibration at point of install?

No

Install CT clamp

Verify external CT reading in installer app is within 50% of truth

No

Yes

Record reading in installer app and complete commissioning process

Unit can be calibrated automatically post handover

Yes

Does the end user or system operator require smart features associated with the external CT such as solar matching or data collection?

No

Consider installation of external CT regardless? (futureproofing)

Yes

No

Do not install external CT



## Contact INDRA

For more information, please contact us;



**INDRA Renewable Technologies**  
Unit 1, Sentinel House,  
Sparrowhawk Close, Malvern,  
Worcestershire, WR14 1GL



**United Kingdom** 01684 770 631  
**Worldwide** 00441684 770 631



[www.indra.co.uk](http://www.indra.co.uk)