

WEEKLY PIGKILL REPORT

Week 52A

Week ending 30th September 2021 (4 day kill)



% CHANGE WEIGHT (KG)
COMPARED PREVIOUS YR

Wk52A -1.2%



% CHANGE IN PIG #
FROM PREVIOUS YR

-0.8 %



PRIME PIG NUMBER
FROM PREVIOUS WEEK

Wk52A: 9,688 (4 day kill)

Wk52: 11,538



CONSUMPTION
100% NZPORK (KG)

July21: 8.70

June21:8.65

IMPORTED PORK
COMPARED JULY 2020

+5,336 (t CWE)



NOTE: 2021, week 52A is a part week – 4 day kill to complete the pigkill year 1 Oct 2020 – 30 Sept 2021.
Equivalent Wk52A = Wk52 (11,805)+(9,851 - 4day kill ending 30th Sept) pigkills to get end of financial year totals.

Date	IMPORTED PROD Year ending (t CWE)	DOMESTIC PROD year ending (t CWE)	Tonnes TOTAL PROD	IMPORTS %	Estimated POPULATION (000)	TOTAL CONSUMPTION PER CAPITA	Kg 100% NZPork	Kg Pork imports
Jul-21	71,289	44,670	115,959	61.48	5,134	22.59	8.70	13.9
Jun-21	67,693	44,359	112,053	60.41	5,131	21.84	8.65	13.2
May-21	65,130	44,656	109,786	59.32	5,127	21.41	8.71	12.7
Apr-21	63,856	44,811	108,667	58.76	5,122	21.22	8.75	12.5
Mar-21	62,375	43,976	106,351	58.65	5,117	20.79	8.59	12.2
Feb-21	62,466	43,733	106,199	58.82	5,114	20.76	8.55	12.2
Jan-21	62,966	43,827	106,793	58.96	5,109	20.90	8.58	12.3
Dec-20	61,730	44,186	105,916	58.28	5,099	20.77	8.67	12.1
Nov-20	60,364	43,672	104,036	58.02	5,096	20.42	8.57	11.8
Oct-20	61,103	43,485	104,588	58.42	5,094	20.53	8.54	12.0
Sep-20	61,390	43,799	105,189	58.36	5,061	20.78	8.65	12.1
Aug-20	62,817	43,649	106,466	59.00	5,020	21.21	8.69	12.5
Jul-20	65,953	43,761	109,714	60.11	5,010	21.94	8.74	13.2

Equivalent pig kill		52A = Wk 52 + 4 day kill			
Year	Week 52A	Year to date	Annual total	Tonnes	Average kg
2020-2021	21,389	632,153	632,153	44,926	71.07
2019-2020	19,965	637,085	637,085	45,477	70.14
2018-2019	15,239	621,040	621,040	43,852	70.61
2017-2018	12,033	651,412	651,412	46,403	71.23
2016-2017	12,243	659,753	659,753	46,855	70.99
2015-2016	12,029	625,498	625,498	44,201	70.67

Previous monthly commentary Week 49 (ending 5th Sept 2021)

This commentary has kindly been supplied from the perspective of wholesaler, retailer, importer sharing their view on the market as experienced by them. It is not necessarily the opinion of NZPork.

DISCLAIMER: Pork production data is provisional and may be revised without notice. All due care has been taken in preparing this information, however New Zealand Pork does not guarantee its accuracy. To the extent possible New Zealand Pork's liability is excluded, and persons acting in reliance on the information do so at their own risk. This information is licensed under the [Creative Commons Attribution-Noncommercial 3.0 New Zealand license](#)

WEEKLY PIGKILL REPORT

Week 52A

Week ending 30th September 2021 (4 day kill)



NATIONAL PIG SLAUGHTER MONITOR PREPARED BY NEW ZEALAND PORK

PIG KILL FULL WEEK ENDING ¹ :		30/9/2021				Week 53				WEEKLY KILL COMPARISON				
		NUMBER OF CARCASSES	WEIGHT (KG)	AVG. WEIGHT (KG)	YEAR TO DATE WEIGHT TONNE	YEAR TO DATE WEIGHT LAST YEAR TONNE	% CHANGE IN WEIGHT COMPARED TO LAST YEAR	WHOLE CARCASSES CONDEMNED	TOTAL KILL ²	LAST WK	% CHANGE	CUMULATIVE YEAR TO DATE ³	CUMULATIVE YEAR TO DATE LAST YEAR	% CHANGE IN PIG NOS COMPARED TO LAST YEAR
PIGS < 50 KG	NTH IS	140	6,461	46.15	332	334	-0.6%	4	144	0		7,610	8,088	-5.9%
	STH IS	138	5,131	37.18	417	436	-4.3%	1	139	0		12,334	12,405	-0.6%
	NZ	278	11,592	41.70	749	770	-2.7%	5	283	0		19,944	20,493	-2.7%
PIGS 50-64.9KG	NTH IS	1,226	72,672	59.28	3,590	4,057	-11.5%	0	1,226	0		60,255	68,291	-11.8%
	STH IS	1,645	99,059	60.22	5,580	5,091	9.6%	4	1,649	0		93,180	85,150	9.4%
	NZ	2,871	171,731	59.82	9,171	9,148	0.3%	4	2,875	0		153,435	153,441	0.0%
PIGS 65-74.9 KG	NTH IS	1,553	108,753	70.03	6,670	6,585	1.3%	3	1,556	0		95,458	94,549	1.0%
	STH IS	2,415	168,207	69.65	12,578	12,171	3.4%	2	2,417	0		180,470	174,109	3.7%
	NZ	3,968	276,960	69.80	19,248	18,756	2.6%	5	3,973	0		275,928	268,658	2.7%
PIGS 75-84.9 KG	NTH IS	637	50,061	78.59	3,175	3,168	0.2%	0	637	0		39,996	38,882	2.9%
	STH IS	1,300	102,939	79.18	7,149	7,928	-9.8%	0	1,300	0		90,356	100,457	-10.1%
	NZ	1,937	153,000	78.99	10,323	11,096	-7.0%	0	1,937	0		130,352	139,339	-6.4%
PIGS 85-94.9 KG	NTH IS	84	7,345	87.44	366	183	100.2%	0	84	0		4,160	2,042	103.7%
	STH IS	399	35,358	88.62	2,458	2,727	-9.9%	0	399	0		27,753	30,800	-9.9%
	NZ	483	42,703	88.41	2,824	2,910	-2.9%	0	483	0		31,913	32,842	-2.8%
PIGS >95 KG	NTH IS	66	6,271	95.02	26	14	91.8%	0	66	0		271	137	97.8%
	STH IS	71	7,037	99.11	442	609	-27.5%	0	71	0		4,434	5,817	-23.8%
	NZ	137	13,308	97.14	468	623	-24.8%	0	137	0		4,705	5,954	-21.0%
TOTAL PRIME PIGS	NTH IS	3,706	251,563	67.88	14,160	14,341	-1.3%	7	3,713	0		207,750	211,989	-2.0%
	STH IS	5,968	417,731	70.00	28,625	28,962	-1.2%	7	5,975	0		408,527	408,738	-0.1%
	NZ	9,674	669,294	69.18	42,784	43,303	-1.2%	14	9,688	0		616,277	620,727	-0.7%
CHOPPERS	NTH IS	56	7,908	141.21	413	324	27.6%	0	56	0		2,764	2,247	23.0%
	STH IS	107	15,010	140.28	1,728	1,850	-6.6%	0	107	0		13,112	14,111	-7.1%
	NZ	163	22,918	140.60	2,142	2,174	-1.5%	0	163	0		15,876	16,358	-2.9%
TOTAL	NZ	9,837	692,212	70.37	44,926	45,477	-1.2%	14	9,851	0		632,153	637,085	-0.8%

¹ Information gathered weekly from all abattoirs licensed to kill pigs.

² Includes carcasses (after removal of condemned parts) inspected and passed for human consumption, and whole carcasses condemned up to and at scales

³ Meat Year (1 October – 30 September) week to date

DISCLAIMER: Pork production data is provisional and may be revised without notice. All due care has been taken in preparing this information, however New Zealand Pork does not guarantee its accuracy. To the extent possible New Zealand Pork's liability is excluded, and persons acting in reliance on the information do so at their own risk. This information is licensed under the [Creative Commons Attribution-Noncommercial 3.0 New Zealand license](#)

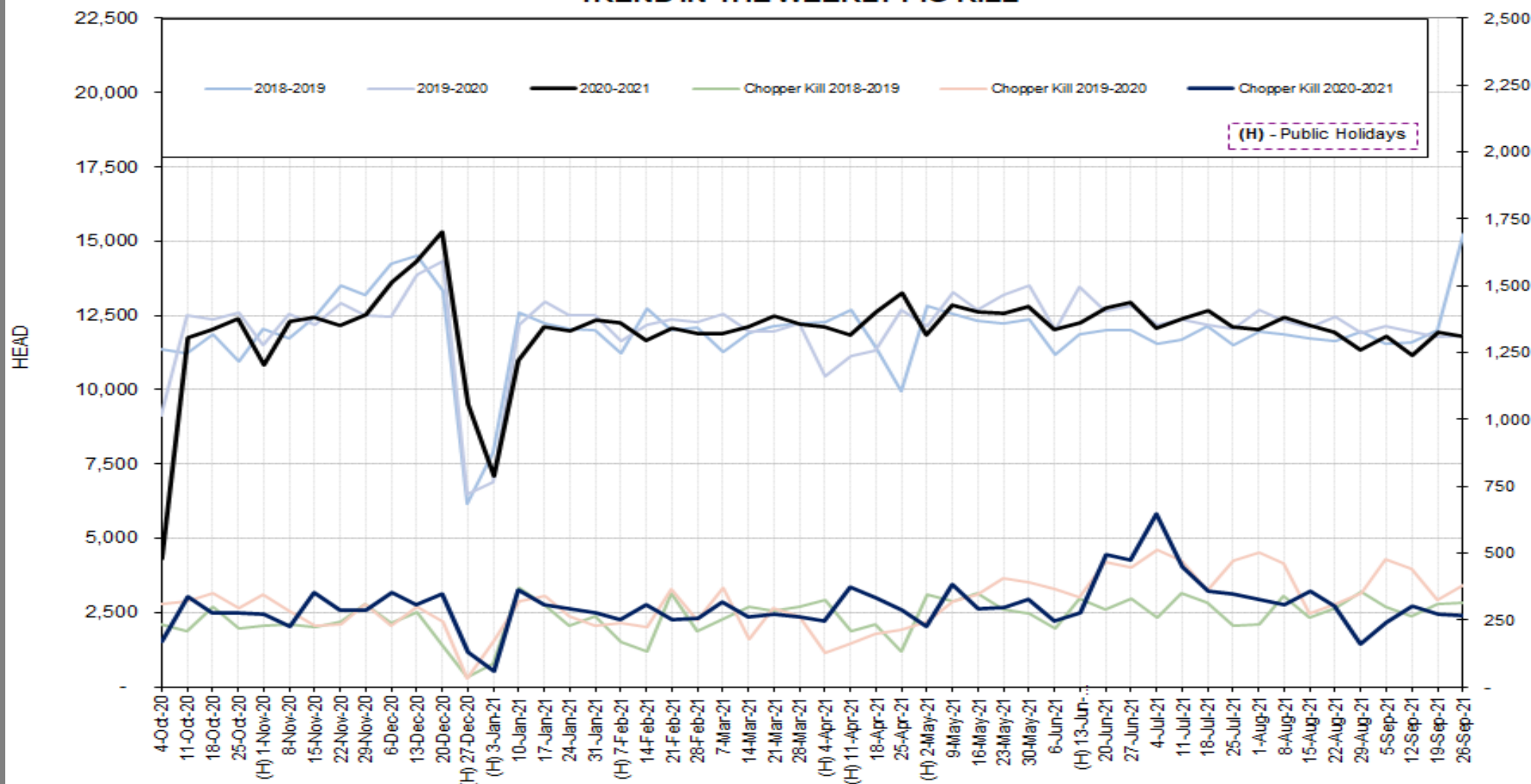
WEEKLY PIGKILL REPORT

Week 52A

Week ending 30th September 2021 (4 day kill)



TREND IN THE WEEKLY PIG KILL



DISCLAIMER: Pork production data is provisional and may be revised without notice. All due care has been taken in preparing this information, however New Zealand Pork does not guarantee its accuracy. To the extent possible New Zealand Pork's liability is excluded, and persons acting in reliance on the information do so at their own risk. This information is licensed under the [Creative Commons Attribution-Noncommercial 3.0 New Zealand license](https://creativecommons.org/licenses/by-nc/3.0/)

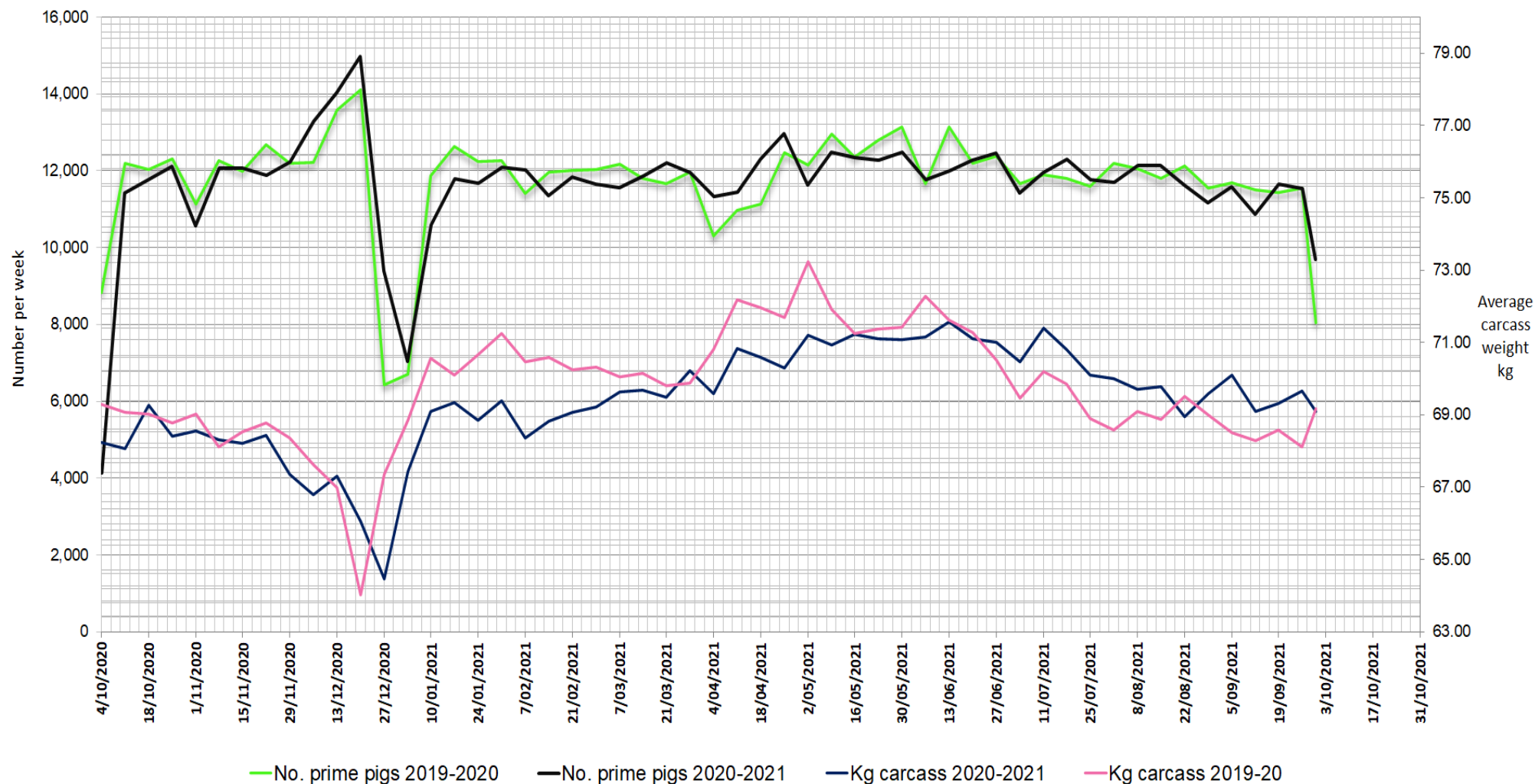
WEEKLY PIGKILL REPORT

Week 52A

Week ending 30th September 2021 (4 day kill)



WEEKLY PIG KILL DATA (Prime pigs)



DISCLAIMER: Pork production data is provisional and may be revised without notice. All due care has been taken in preparing this information, however New Zealand Pork does not guarantee its accuracy. To the extent possible New Zealand Pork's liability is excluded, and persons acting in reliance on the information do so at their own risk. This information is licensed under the [Creative Commons Attribution-Noncommercial 3.0 New Zealand license](#)