

# WEEKLY PIGKILL REPORT

Week 52  
Week ending 26th September 2021



% CHANGE WEIGHT (KG)  
COMPARED PREVIOUS YR

Wk52 -2.7%



% CHANGE IN PIG #  
FROM PREVIOUS YR

-2.3 %



PRIME PIG NUMBER  
FROM PREVIOUS WEEK

Wk52: 11,538

Wk51: 11,662



CONSUMPTION  
100% NZPORK (KG)

July21: 8.70

June21:8.65

IMPORTED PORK  
COMPARED JULY 2020

+5,336 (t CWE)



NOTE: 2021 week 52 numbers in the 'National Pig Slaughter' table (pg2) are 3 kill days less than are compared with week 52 in 2019-2020, due to when the end of the month falls. This appears as a large % drop. These % changes will show a truer representation for the end of the financial year when the part week (+4 day kill) are included at the end of the financial year (30<sup>th</sup> Sept) calculated next week.

Date	IMPORTED PROD Year ending (t CWE)	DOMESTIC PROD year ending (t CWE)	Tonnes TOTAL PROD	IMPORTS %	Estimated POPULATION (000)	TOTAL CONSUMPTION PER CAPITA	Kg 100% NZPork	Kg Pork imports
Jul-21	71,289	44,670	115,959	61.48	5,134	22.59	8.70	13.9
Jun-21	67,693	44,359	112,053	60.41	5,131	21.84	8.65	13.2
May-21	65,130	44,656	109,786	59.32	5,127	21.41	8.71	12.7
Apr-21	63,856	44,811	108,667	58.76	5,122	21.22	8.75	12.5
Mar-21	62,375	43,976	106,351	58.65	5,117	20.79	8.59	12.2
Feb-21	62,466	43,733	106,199	58.82	5,114	20.76	8.55	12.2
Jan-21	62,966	43,827	106,793	58.96	5,109	20.90	8.58	12.3
Dec-20	61,730	44,186	105,916	58.28	5,099	20.77	8.67	12.1
Nov-20	60,364	43,672	104,036	58.02	5,096	20.42	8.57	11.8
Oct-20	61,103	43,485	104,588	58.42	5,094	20.53	8.54	12.0
Sep-20	61,390	43,799	105,189	58.36	5,061	20.78	8.65	12.1
Aug-20	62,817	43,649	106,466	59.00	5,020	21.21	8.69	12.5
Jul-20	65,953	43,761	109,714	60.11	5,010	21.94	8.74	13.2

Equivalent pig kill					
Year	Week 52	Year to date	Annual total	Tonnes	
2020-2021	11,805	622,302			
2019-2020	11,800	628,920	637,085	45,477	71.38
2018-2019	15,239	621,040	621,040	43,852	70.61
2017-2018	12,033	651,412	651,412	46,403	71.23
2016-2017	12,243	659,753	659,753	46,855	70.99
2015-2016	12,029	625,498	625,498	44,201	70.67

*Previous monthly commentary Week 49 (ending 5<sup>th</sup> Sept 2021)*

This commentary has kindly been supplied from the perspective of wholesaler, retailer, importer sharing their view on the market as experienced by them. It is not necessarily the opinion of NZPork.

DISCLAIMER: Pork production data is provisional and may be revised without notice. All due care has been taken in preparing this information, however New Zealand Pork does not guarantee its accuracy. To the extent possible New Zealand Pork's liability is excluded, and persons acting in reliance on the information do so at their own risk. This information is licensed under the [Creative Commons Attribution-Noncommercial 3.0 New Zealand license](#)

# WEEKLY PIGKILL REPORT

Week 52  
Week ending 26th September 2021



## NATIONAL PIG SLAUGHTER MONITOR PREPARED BY NEW ZEALAND PORK

PIG KILL FULL WEEK ENDING <sup>1</sup> :		26/9/2021						Week 52						WEEKLY KILL COMPARISON	
		NUMBER OF CARCASSES	WEIGHT (KG)	AVG. WEIGHT (KG)	YEAR TO DATE WEIGHT TONNE	YEAR TO DATE WEIGHT LAST YEAR TONNE	% CHANGE IN WEIGHT COMPARED TO LAST YEAR	WHOLE CARCASSES CONDEMNED	TOTAL KILL <sup>2</sup>	LAST WK	% CHANGE	CUMULATIVE YEAR TO DATE <sup>3</sup>	CUMULATIVE YEAR TO DATE LAST YEAR	% CHANGE IN PIG NOS COMPARED TO LAST YEAR	
PIGS < 50 KG	NTH IS	92	4,245	46.14	325	334	-2.5%	3	95	89	6.7%	7,466	8,088	-7.7%	
	STH IS	144	5,510	38.26	412	436	-5.5%	0	144	167	-13.8%	12,195	12,405	-1.7%	
	NZ	236	9,755	41.33	738	770	-4.2%	3	239	256	-6.6%	19,661	20,493	-4.1%	
PIGS 50-64.9KG	NTH IS	1,310	77,924	59.48	3,518	4,057	-13.3%	0	1,310	1,249	4.9%	59,029	68,291	-13.6%	
	STH IS	1,895	114,145	60.23	5,481	5,091	7.7%	0	1,895	2,003	-5.4%	91,531	85,150	7.5%	
	NZ	3,205	192,069	59.93	8,999	9,148	-1.6%	0	3,205	3,252	-1.4%	150,560	153,441	-1.9%	
PIGS 65-74.9 KG	NTH IS	1,872	130,513	69.72	6,561	6,585	-0.4%	1	1,873	1,780	5.2%	93,902	94,549	-0.7%	
	STH IS	3,214	223,809	69.64	12,410	12,171	2.0%	4	3,218	3,327	-3.3%	178,053	174,109	2.3%	
	NZ	5,086	354,322	69.67	18,971	18,756	1.1%	5	5,091	5,107	-0.3%	271,955	268,658	1.2%	
PIGS 75-84.9 KG	NTH IS	696	54,875	78.84	3,125	3,168	-1.4%	0	696	767	-9.3%	39,359	38,882	1.2%	
	STH IS	1,463	116,022	79.30	7,046	7,928	-11.1%	0	1,463	1,491	-1.9%	89,056	100,457	-11.3%	
	NZ	2,159	170,897	79.16	10,170	11,096	-8.3%	0	2,159	2,258	-4.4%	128,415	139,339	-7.8%	
PIGS 85-94.9 KG	NTH IS	137	12,194	89.01	359	183	96.2%	0	137	192	-28.6%	4,076	2,042	99.6%	
	STH IS	550	48,817	88.76	2,423	2,727	-11.1%	0	550	480	14.6%	27,354	30,800	-11.2%	
	NZ	687	61,011	88.81	2,782	2,910	-4.4%	0	687	672	2.2%	31,430	32,842	-4.3%	
PIGS >95 KG	NTH IS	3	294	98.00	20	14	46.2%	0	3	3	0.0%	205	137	49.6%	
	STH IS	154	15,240	98.96	435	609	-28.6%	0	154	114	35.1%	4,363	5,817	-25.0%	
	NZ	157	15,534	98.94	455	623	-27.0%	0	157	117	34.2%	4,568	5,954	-23.3%	
TOTAL PRIME PIGS	NTH IS	4,110	280,045	68.14	13,908	14,341	-3.0%	4	4,114	4,080	0.8%	204,037	211,989	-3.8%	
	STH IS	7,420	523,543	70.56	28,207	28,962	-2.6%	4	7,424	7,582	-2.1%	402,552	408,738	-1.5%	
	NZ	11,530	803,588	69.70	42,115	43,303	-2.7%	8	11,538	11,662	-1.1%	606,589	620,727	-2.3%	
CHOPPERS	NTH IS	58	8,897	153.40	405	324	25.2%	1	59	38	55.3%	2,708	2,247	20.5%	
	STH IS	206	26,175	127.06	1,713	1,850	-7.4%	2	208	236	-11.9%	13,005	14,111	-7.8%	
	NZ	264	35,072	132.85	2,119	2,174	-2.5%	3	267	274	-2.6%	15,713	16,358	-3.9%	
TOTAL	NZ	11,794	838,660	71.11	44,234	45,477	-2.7%	11	11,805	11,936	-1.1%	622,302	637,085	-2.3%	

<sup>1</sup> Information gathered weekly from all abattoirs licensed to kill pigs.

<sup>2</sup> Includes carcasses (after removal of condemned parts) inspected and passed for human consumption, and whole carcasses condemned up to and at scales

<sup>3</sup> Meat Year (1 October – 30 September) week to date

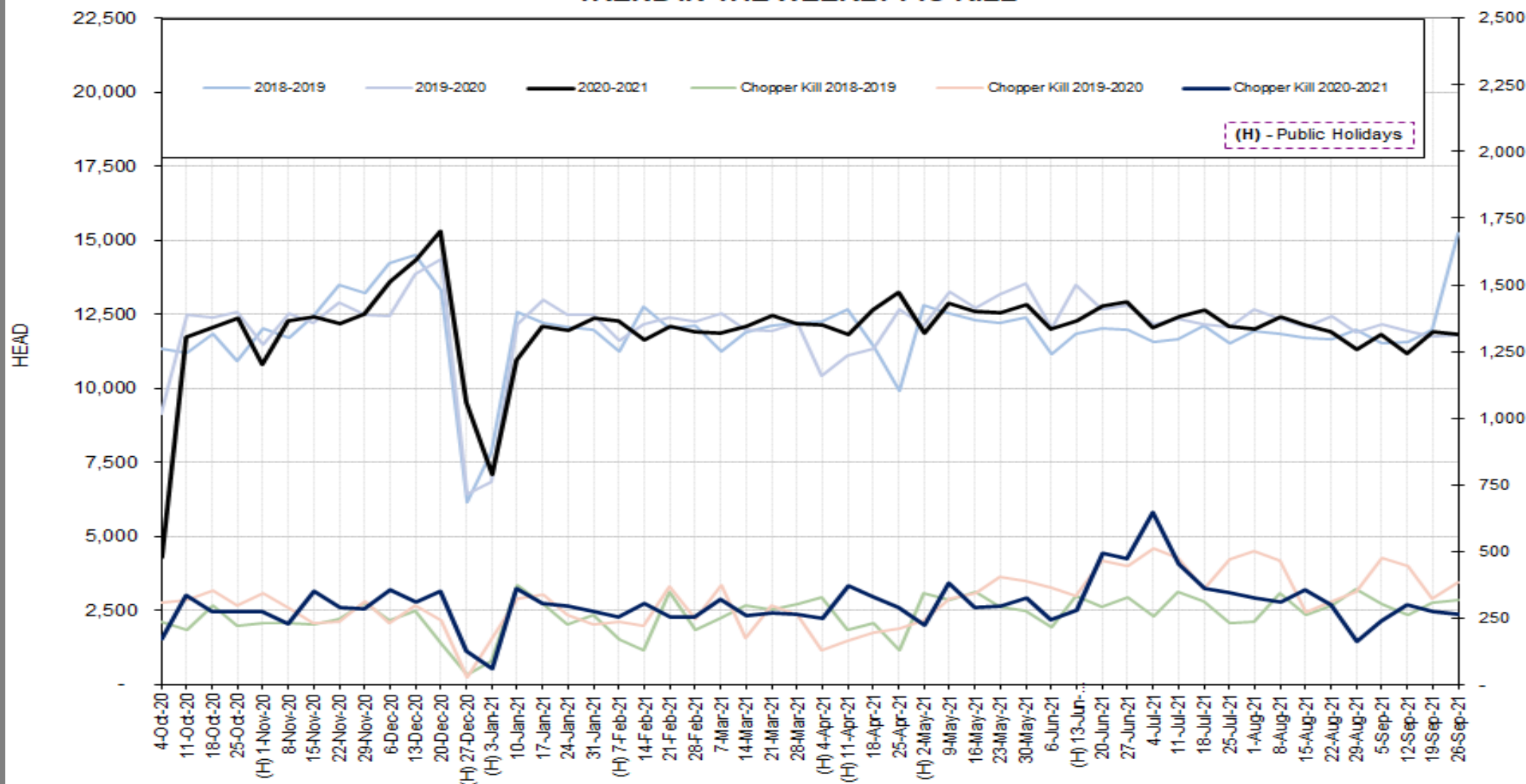
**DISCLAIMER:** Pork production data is provisional and may be revised without notice. All due care has been taken in preparing this information, however New Zealand Pork does not guarantee its accuracy. To the extent possible New Zealand Pork's liability is excluded, and persons acting in reliance on the information do so at their own risk. This information is licensed under the [Creative Commons Attribution-Noncommercial 3.0 New Zealand license](#)

# WEEKLY PIGKILL REPORT

Week 52  
Week ending 26th September 2021



## TREND IN THE WEEKLY PIG KILL



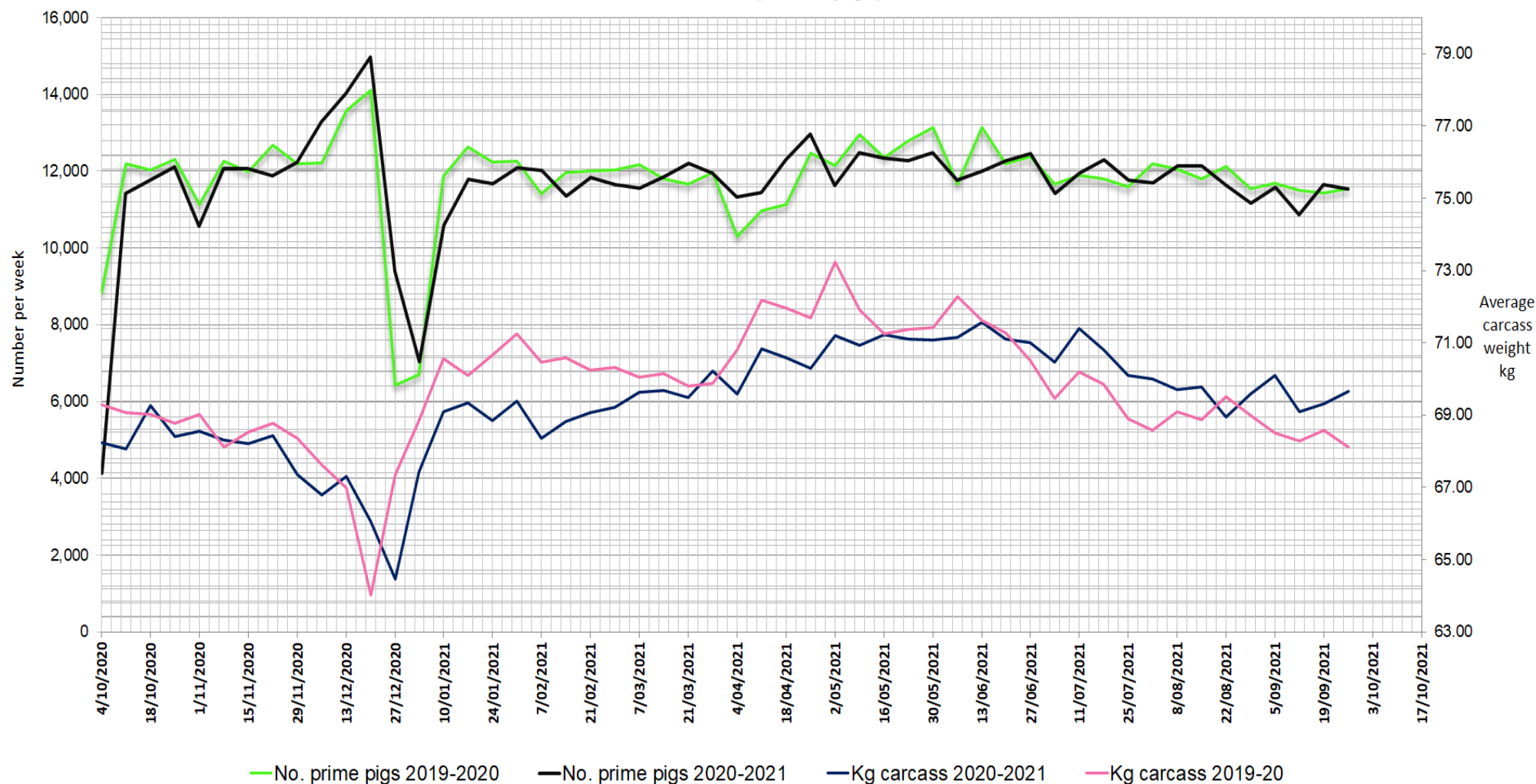
DISCLAIMER: Pork production data is provisional and may be revised without notice. All due care has been taken in preparing this information, however New Zealand Pork does not guarantee its accuracy. To the extent possible New Zealand Pork's liability is excluded, and persons acting in reliance on the information do so at their own risk. This information is licensed under the [Creative Commons Attribution-Noncommercial 3.0 New Zealand license](#)

# WEEKLY PIGKILL REPORT

Week 52  
Week ending 26th September 2021



## WEEKLY PIG KILL DATA (Prime pigs)



DISCLAIMER: Pork production data is provisional and may be revised without notice. All due care has been taken in preparing this information, however New Zealand Pork does not guarantee its accuracy. To the extent possible New Zealand Pork's liability is excluded, and persons acting in reliance on the information do so at their own risk. This information is licensed under the [Creative Commons Attribution-Noncommercial 3.0 New Zealand license](#)