



HEAD OFFICE:  
 37 Paramount Blvd.  
 Derrimut Vic 3026  
 ABN: 70 095 343 123  
 Tel: 03 8390 6300 Fax: 03 8390 6366  
 EMAIL: [ectglo@bigpond.net.au](mailto:ectglo@bigpond.net.au) Website: [www.ectglobal.com.au](http://www.ectglobal.com.au)

## TILE TRAY INSTALLATION GUIDE

**PLEASE READ THESE INSTRUCTIONS CAREFULLY BEFORE INSTALLING. FAILURE TO FOLLOW INSTRUCTIONS WILL VOID WARRANTY.**

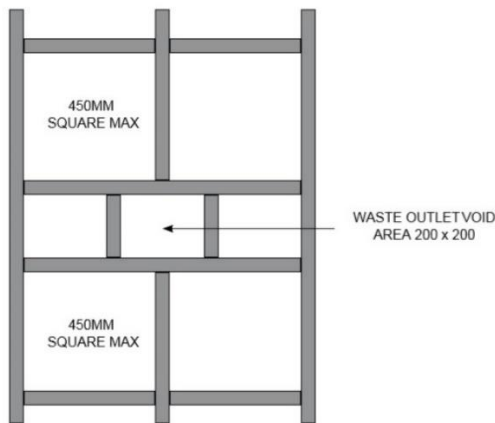
It is the responsibility of the installer of the ECT tile tray to check with local building code in relation to waterproofing and installation. These instructions are recommended method only. The installation of the puddle flange and outlet is the responsibility of the installer to ensure a water tight seal between tray and puddle flange, ECT can only supply recommended methods of installation.

### 1. PREPARATION

- Ensure surface is level
- Check condition of substrate, replace any timber that may be effected by weather damage or rotting
- Remove excess dust prior to installation. Methylated Spirits will assist with good adhesion.
- Mark and cut out position of base.
- Mark out position of outlet

### 2. INSTALLATION TO TIMBER FLOOR

We recommend the tile tray to be installed on a 10mm mortar bed. If installing on silicone apply a continuous bead to the underside of the tray. Ensure the silicone has a clean surface to adhere too. Make sure timber joists is strengthened as per diagram. 450mm centres on joists to be trimmed out. Floor joists and trimmers must be flat, planing or sanding off any ridges is recommended before installation. Trim edges of base to support join of flooring and tile tray.

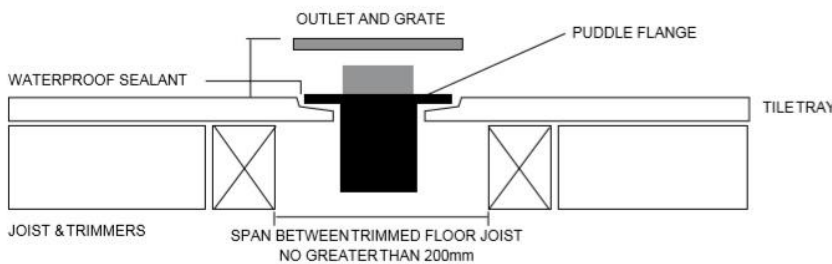


If the tray requires trimming, it is recommended to use a diamond saw blade in a well ventilated area. It is recommended that appropriate Personal Protective Equipment is worn such as Eye protection and dust mask.

### 3. TILE TRAY WASTE CONNECTIONS:

#### SUSPENDED FLOOR

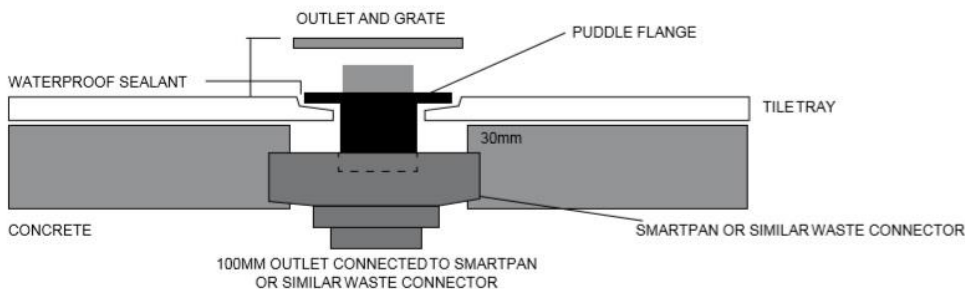
Note; Tile Tray shown direct to joist, however same method applies to any other suspended floor application.



Please put S/S fixing screws and SIKAFLEX F11 to secure the puddle flange onto the tile tray

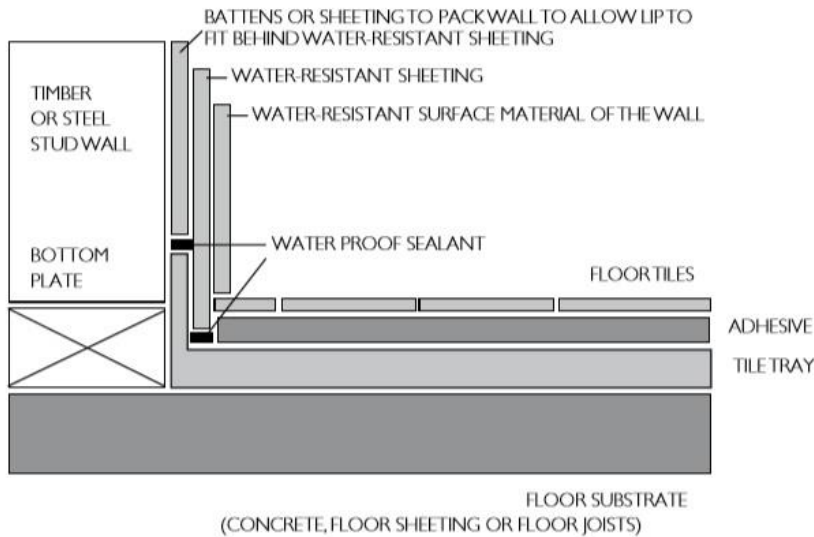
#### SLAB ON GROUND

Note; This method can be used for any application where access under the floor is restricted and connection is difficult.



#### 4. STUD FRAME

##### NON CHECK IN WALL JUNCTION



##### INSTALLATION TO CONCRETE FLOOR.

Ensure the area is level and allow water to flow to outlet when tray is installed (tray has in built fall to waste).

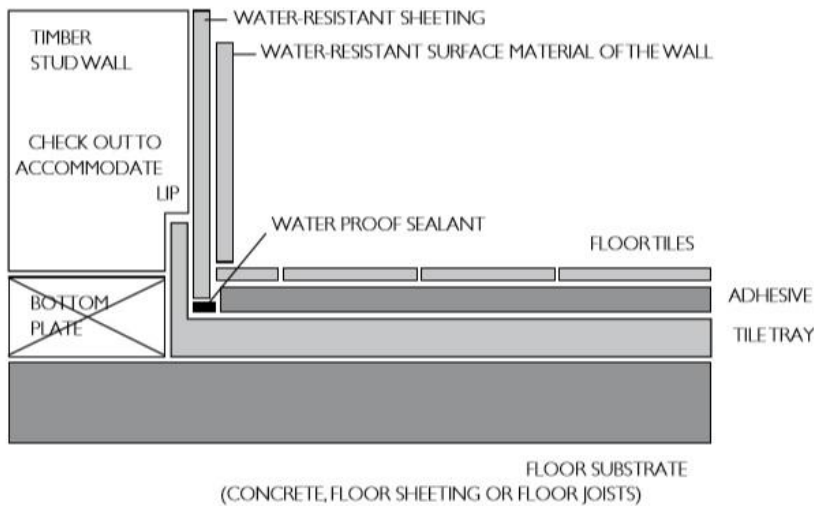
Tray can be installed on mortar bed if required.

Void area around outlet can be no greater than 300\*300mm.

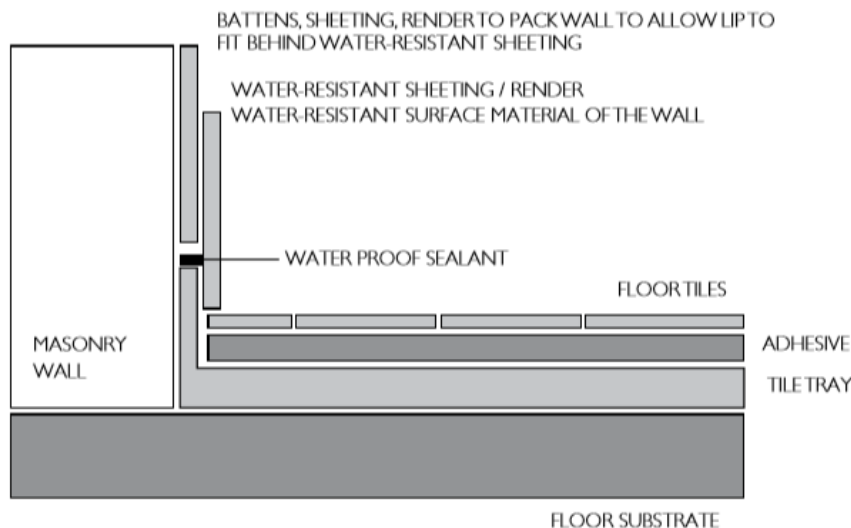
If installing on silicone apply a continuous bead to the underside of the tray. Ensure the silicone has a clean surface to adhere to.

Refer to the installation instruction for smartseal outlet, it is recommended the smartseal be installed 30mm below floor surface to allow for locking nut. Note: We recommend IPLEX Smartseal be used for new construction. If Smartseal is not used ensure void area under waste outlet does not exceed 300\*300mm.

##### STUD FRAME - CHECK IN WALL JUNCTION



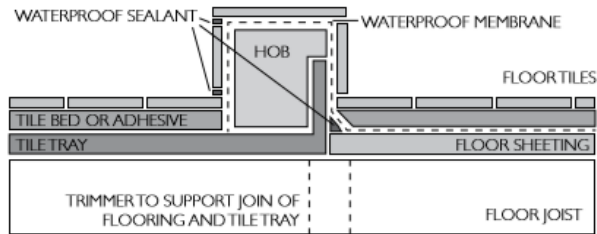
##### DOUBLE BRICK / SOLID BLOCK - NON CHECK IN WALL JUNCTION



All the joints between the tile tray and floor/walls must be waterproofed. The tile tray is made of waterproof material hence does not require waterproofing. It is recommended that all work be carried out by a certified water proofing technician.

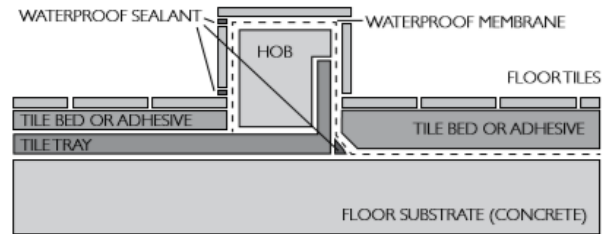
## 5. FLOOR JUNCTIONS:

### HOBBED - TRAY INSTALLED DIRECT TO FLOOR JOIST



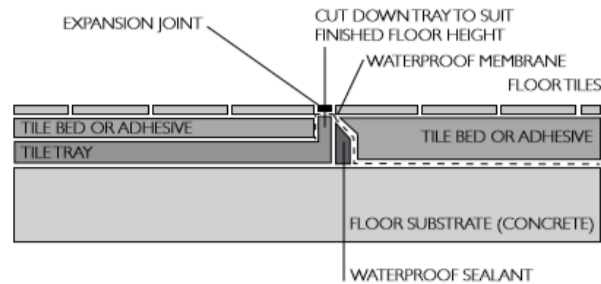
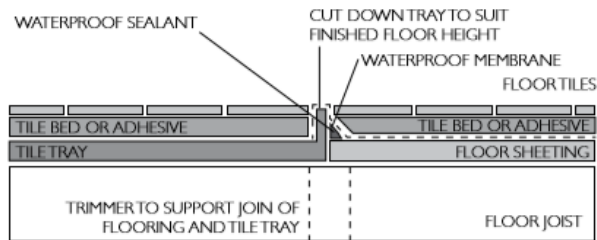
TIMBER MUST NOT BE USED FOR HOB

### HOBBED - TRAY INSTALLED ON CONCRETE OR SHEET FLOORING



TIMBER MUST NOT BE USED FOR HOB

### HOBBLESS - TRAY INSTALLED DIRECT TO FLOOR JOIST



## 6. RECOMMENDED ADHERSIVES:

**For adhering tray to timber/steel substrate:** Sikaflex-11FC, Ardex RA88, Dunlop Builders Bond, Selley's Proseries, Selley's 3 in 1, Mapeflex PU45.

### For Tiling:

**The tiles can be directly bonded to tile tray with following products:** Prohesive Ultrapro (also known as MCB A100), Ardex WA100, Ardex Abaflex X77+/-E90, Ardex Abaflex X18+/-E90, Ardex STS8+E90, Dunlop Tile-All, Mapei Kerapoxy 410, Davco Flexible CTA Pre-mixed.

**The surface of the tray can be primed with following products:** Aqua Blok Moisture seal, Ardex WPM300+Broadcast Sand, Ardex Abapoxy+Broadcast Sand, Ardex P9 Single Par Primer, Gripset Betta Prime All, Davco Ultraprime, Dunlop Primer & Additive.

**The following Adhesives are recommended for lay tiles onto the primed surface:** Ardex Abaflex, Ardex X56, Ardex STS8+Ardex E90, Ardex X77+E90, Ardex Quickbond+ Abalastic

## 7. WARRANTY

ECT Tile Tray comes with a 7 year manufacturers warranty against faulty material and workmanship. Failure to follow these instructions will void the warranty.