

NORTHEAST CORNER

146TH & TOWNE ROAD

WESTFIELD • WEST CARMEL • ZIONSVILLE

MIXED-USE DEVELOPMENT

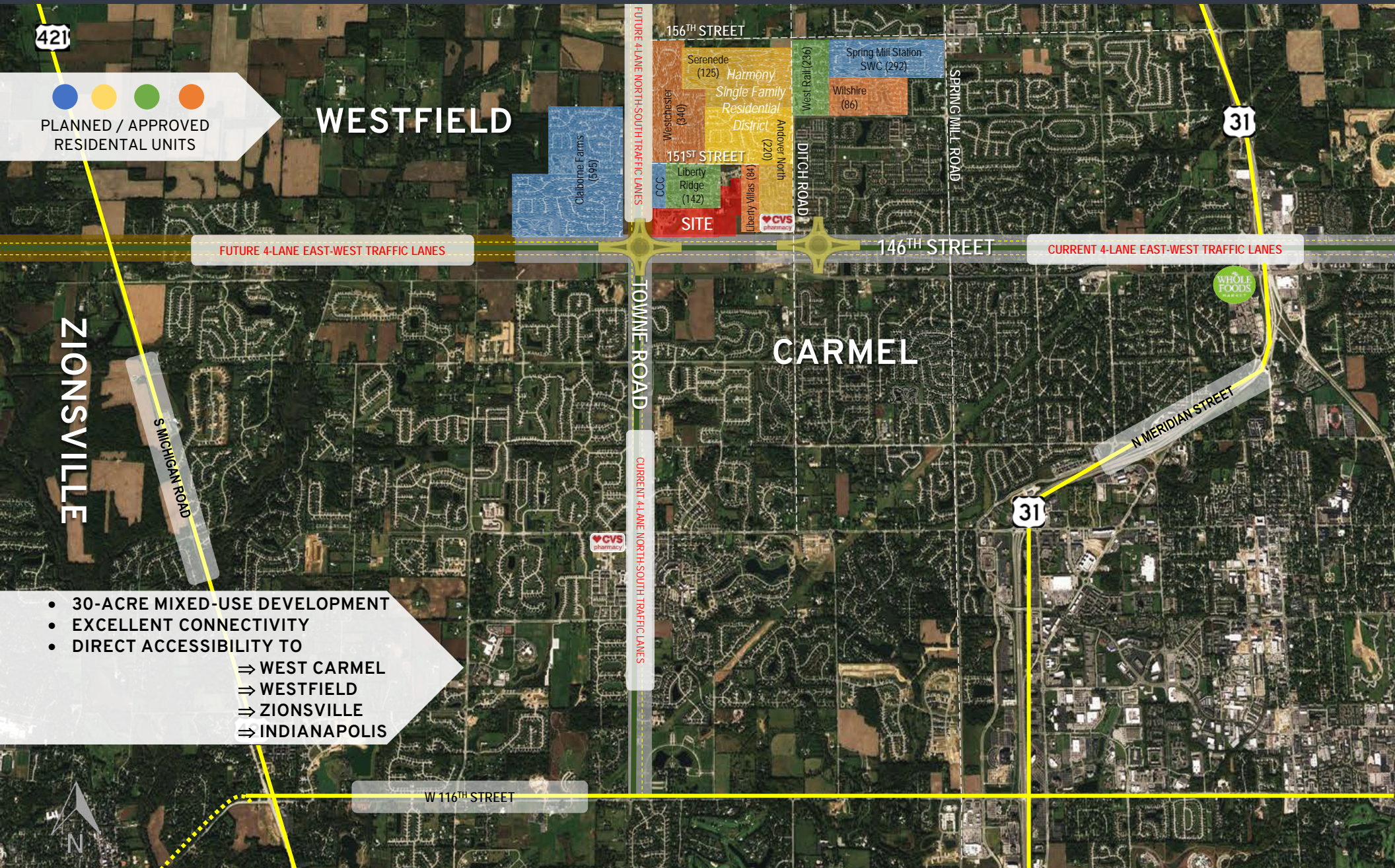


GERSHAM
PARTNERS

RETAIL | OFFICE | MEDICAL | MULTI-FAMILY

INFRASTRUCTURE + GROWTH

TOWNE WEST DEVELOPMENT
NEC 146TH & TOWNE ROAD | WESTFIELD, INDIANA



421

● ● ● ●
PLANNED / APPROVED
RESIDENTIAL UNITS

WESTFIELD

156TH STREET

Serenade (125)
Westchester (340)
Harmony
Single Family Residential District

Spring Mill Station SWC (292)

Wilshire (86)

West Rail (236)

Claborne Farms (595)

FUTURE 4-LANE NORTH-SOUTH TRAFFIC LANES

151ST STREET

Liberty Ridge (142)
Liberty Villas (46)

SITE

CVS pharmacy

TOWNE ROAD

CURRENT 4-LANE NORTH-SOUTH TRAFFIC LANES

146TH STREET

CURRENT 4-LANE EAST-WEST TRAFFIC LANES

31

CARMEL

WHOLE FOODS MARKET

N MERIDIAN STREET

31

W 116TH STREET

ZIONSVILLE

S MICHIGAN ROAD

- 30-ACRE MIXED-USE DEVELOPMENT
- EXCELLENT CONNECTIVITY
- DIRECT ACCESSIBILITY TO
 - ⇒ WEST CARMEL
 - ⇒ WESTFIELD
 - ⇒ ZIONSVILLE
 - ⇒ INDIANAPOLIS

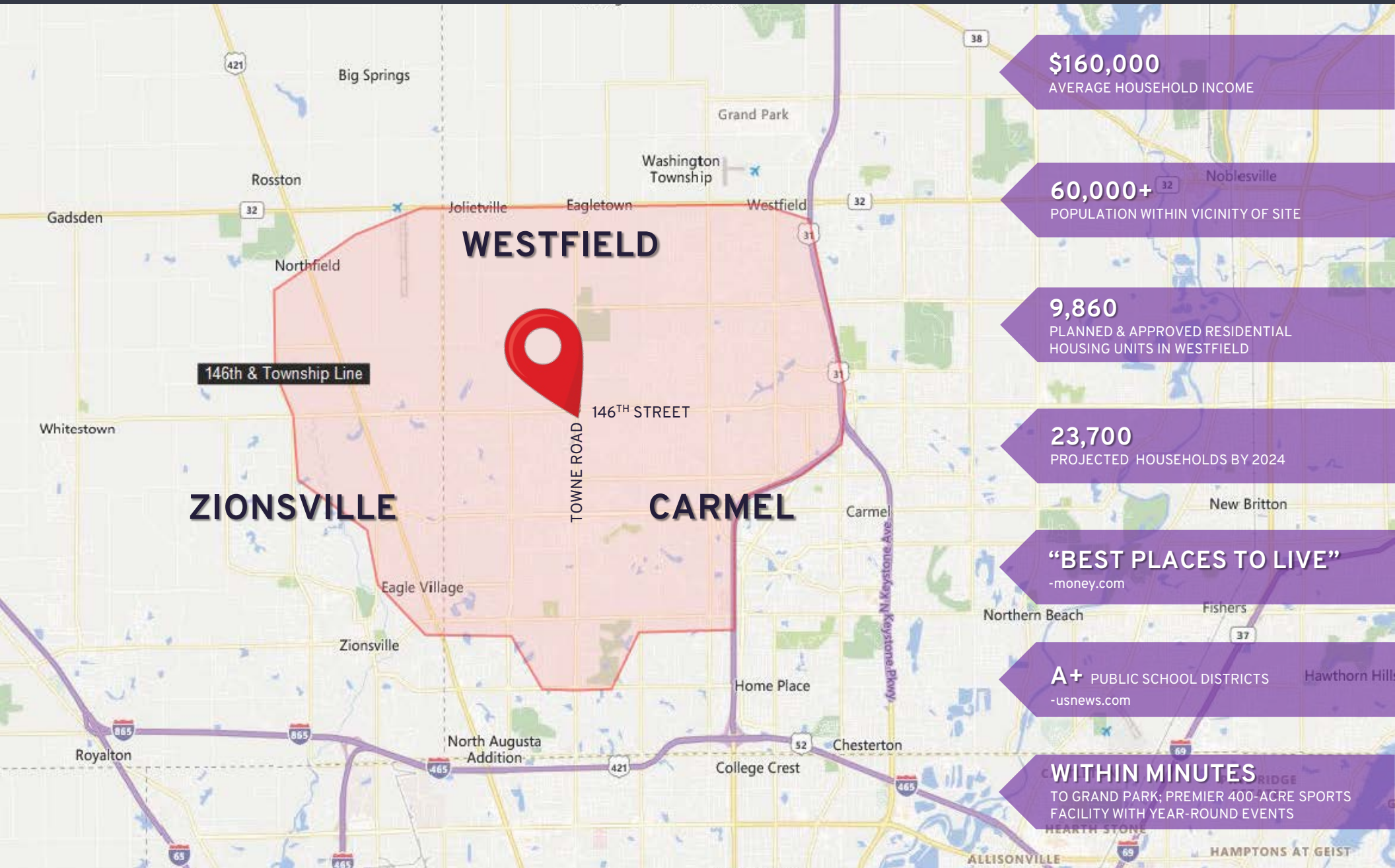


GERSHMAN PARTNERS

350 Massachusetts Avenue, Suite 400 | Indianapolis, IN 46204 | (317) 599-4800 | www.gershmanpartners.com | ©2020
LEASING & DEVELOPMENT INQUIRIES > RYAN GERSHMAN rgershman@gershmanpartners.com | MEGHAN DEMARS KIGER mkiger@gershmanpartners.com

TRADE AREA HIGHLIGHTS

TOWNE WEST DEVELOPMENT
NEC 146TH & TOWNE ROAD | WESTFIELD, INDIANA



\$160,000
AVERAGE HOUSEHOLD INCOME

60,000+
POPULATION WITHIN VICINITY OF SITE

9,860
PLANNED & APPROVED RESIDENTIAL HOUSING UNITS IN WESTFIELD

23,700
PROJECTED HOUSEHOLDS BY 2024

"BEST PLACES TO LIVE"
-money.com

A+ PUBLIC SCHOOL DISTRICTS
-usnews.com

WITHIN MINUTES
TO GRAND PARK; PREMIER 400-ACRE SPORTS FACILITY WITH YEAR-ROUND EVENTS

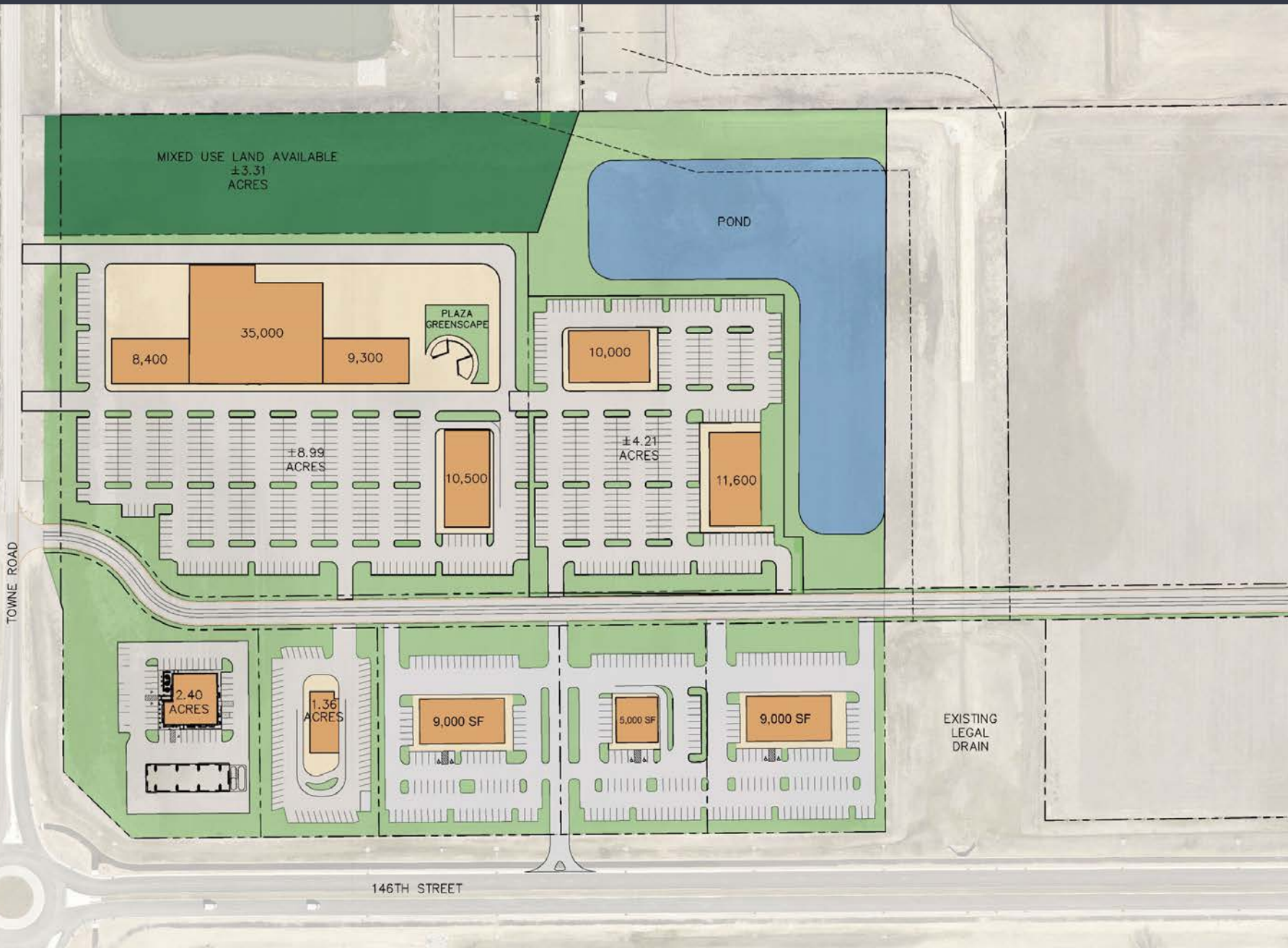


GERSHMAN PARTNERS

350 Massachusetts Avenue, Suite 400 | Indianapolis, IN 46204 | (317) 599-4800 | www.gershmanpartners.com | ©2020
LEASING & DEVELOPMENT INQUIRIES > RYAN GERSHMAN rgershman@gershmanpartners.com | MEGHAN DEMARS KIGER mkiger@gershmanpartners.com

CONCEPTUAL SITE PLAN

TOWNE WEST DEVELOPMENT
NEC 146TH & TOWNE ROAD | WESTFIELD, INDIANA



GERSHMAN PARTNERS

350 Massachusetts Avenue, Suite 400 | Indianapolis, IN 46204 | (317) 599-4800 | www.gershmanpartners.com | ©2020
LEASING & DEVELOPMENT INQUIRIES > RYAN GERSHMAN rgershman@gershmanpartners.com | MEGHAN DEMARS KIGER mkiger@gershmanpartners.com