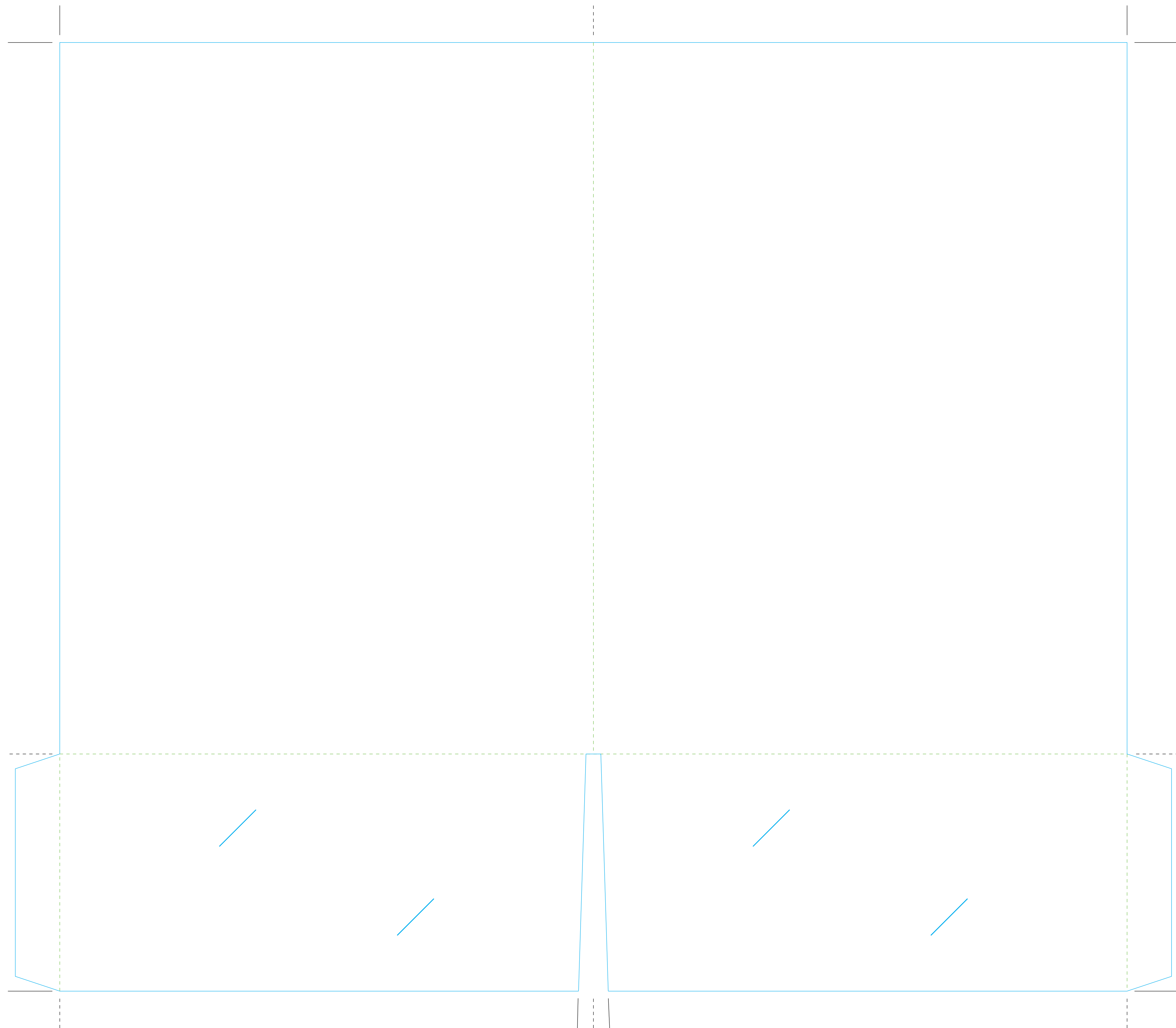




# 9X12 POCKET FOLDER



SOLID LINE  
DIECUT

.....  
DOTTED LINE  
FOLD

#### When designing

- Create a document sized to 18 in x 16 in.
- Create a layer for the die trace and a layer for your artwork.
- Place the .pdf die trace on the die trace layer with upper left X and Y coordinates at X: -1 in and Y: -3 in
- Lock the die trace layer.
- Create your artwork on the layer you created for your artwork.