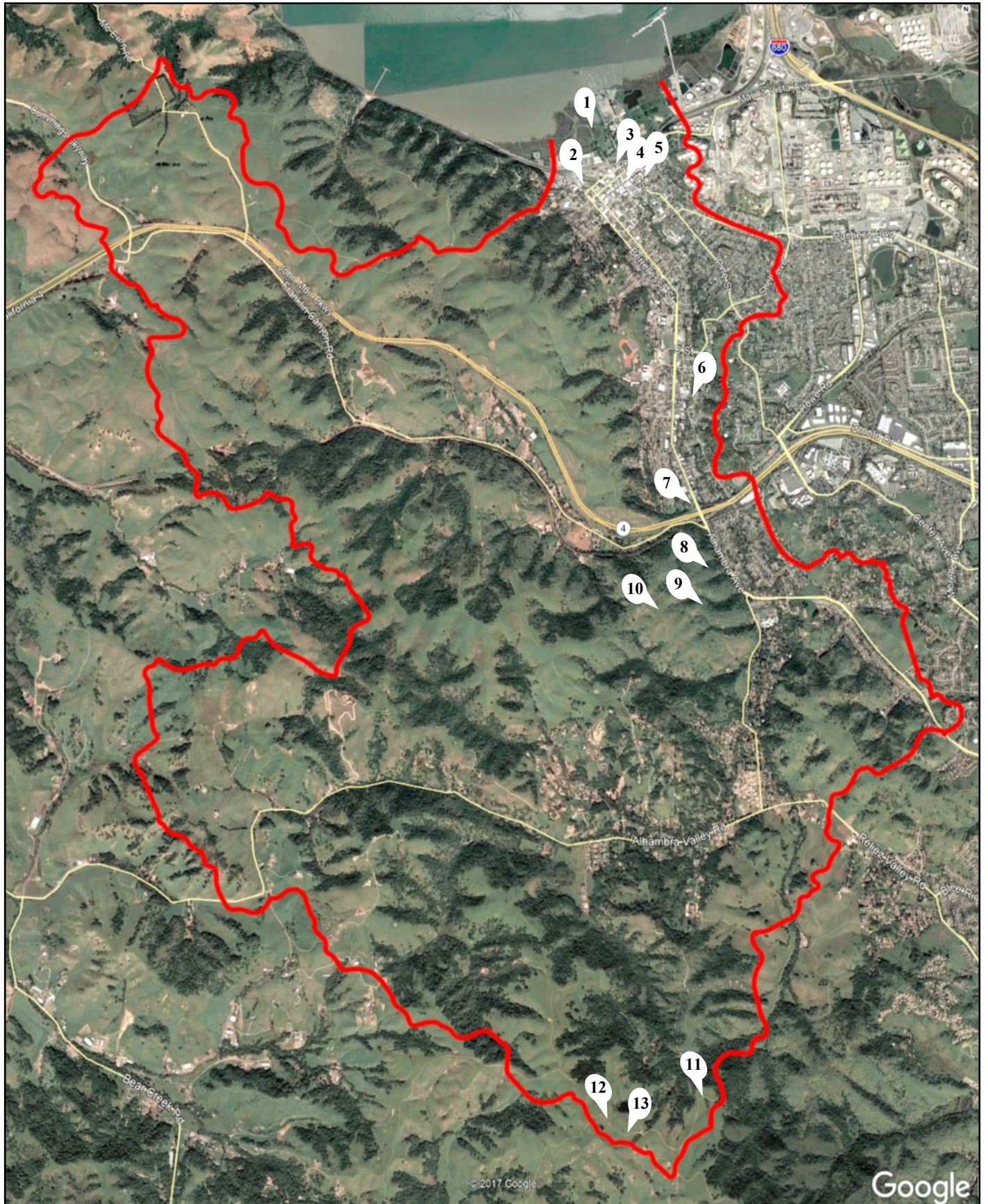


# Interpretive Panel Locations



## Watershed Statistics

Area: Over 16 Square Miles  
 Total Length of All Channels: 48 Miles  
 Length of Longest Branch of Creek: 8 Miles  
 Highest Elevation: 1,470 Feet  
 Average Annual Rainfall: 22 Inches



Approximate GPS Coordinates (more info on other side of map)

- |   |  |
|---|--|
| 1. Arch Bridge Trail, GPS: 38.02299, -122.14028 | 7. Muir Site Visitors' Center, GPS: 37.99234, -122.13093 |
| 2. Grangers Wharf, GPS: 38.02071, -122.14151    | 8. Mt. Wand Fire Road, GPS: 37.98540, -122.12899         |
| 3. Amtrak Station, GPS: 38.01950, -122.13826    | 9. Mt. Wand Fire Road, GPS: 37.98404, -122.12976         |
| 4. Downtown Plaza, GPS: 38.01698, -122.13645    | 10. Mt. Wand Fire Road, GPS: 37.98302, -122.13717        |
| 5. Ward Street, GPS: 38.01738, -122.13469       | 11. Maricich Lagoons, GPS: 37.94596, -122.13394          |
| 6. Adult School, GPS: 37.99968, -122.13826      | 12. Sindicich Lagoons, GPS: 37.94382, -122.14059         |
|   | 13. Briones Crest Trail, GPS: 37.94277, -122.13787       |

Challenge yourself to find them all!