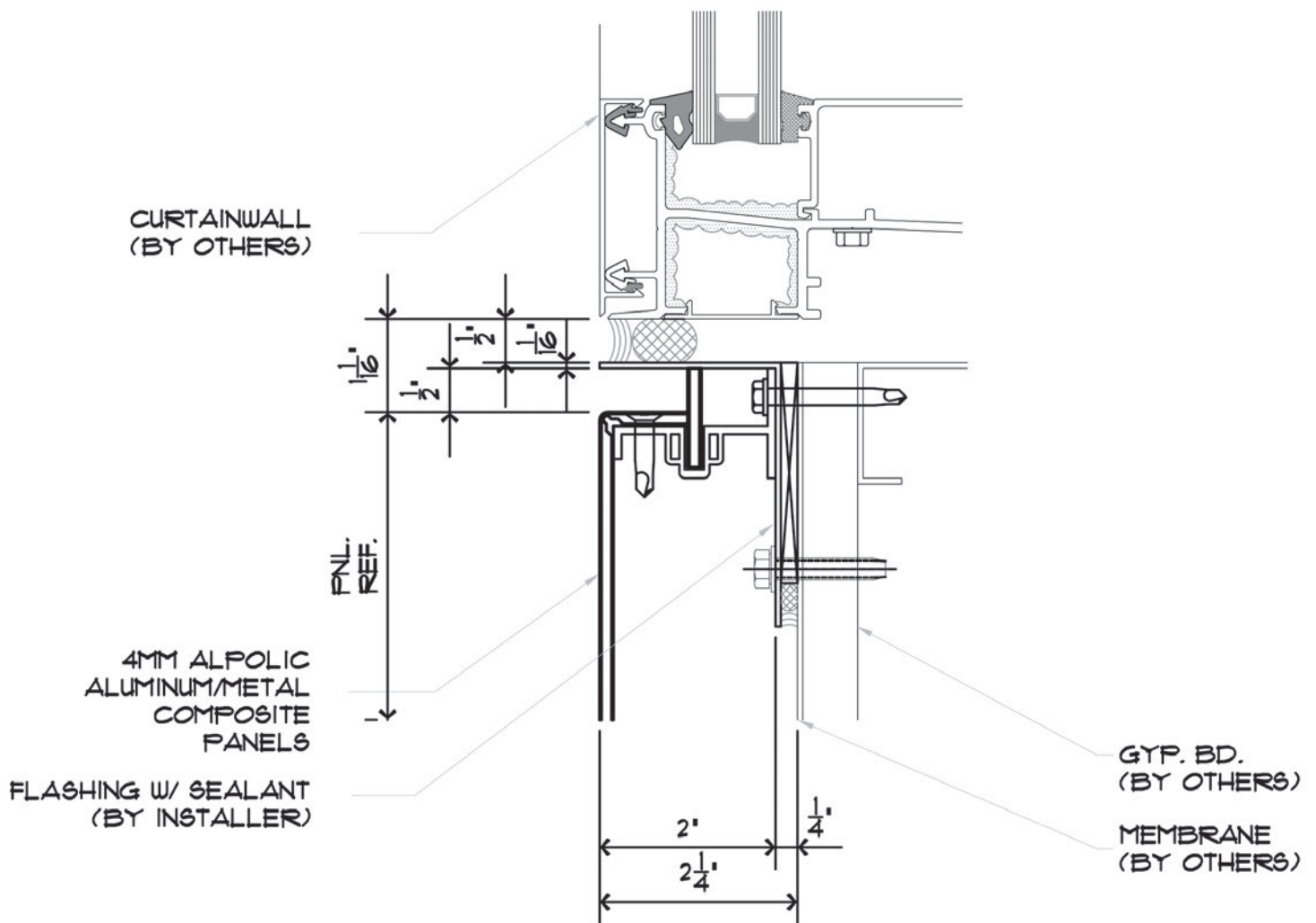


# RAIN SCREEN SYSTEM

[www.alumiclad.ca](http://www.alumiclad.ca)

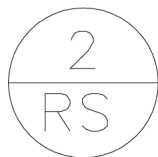
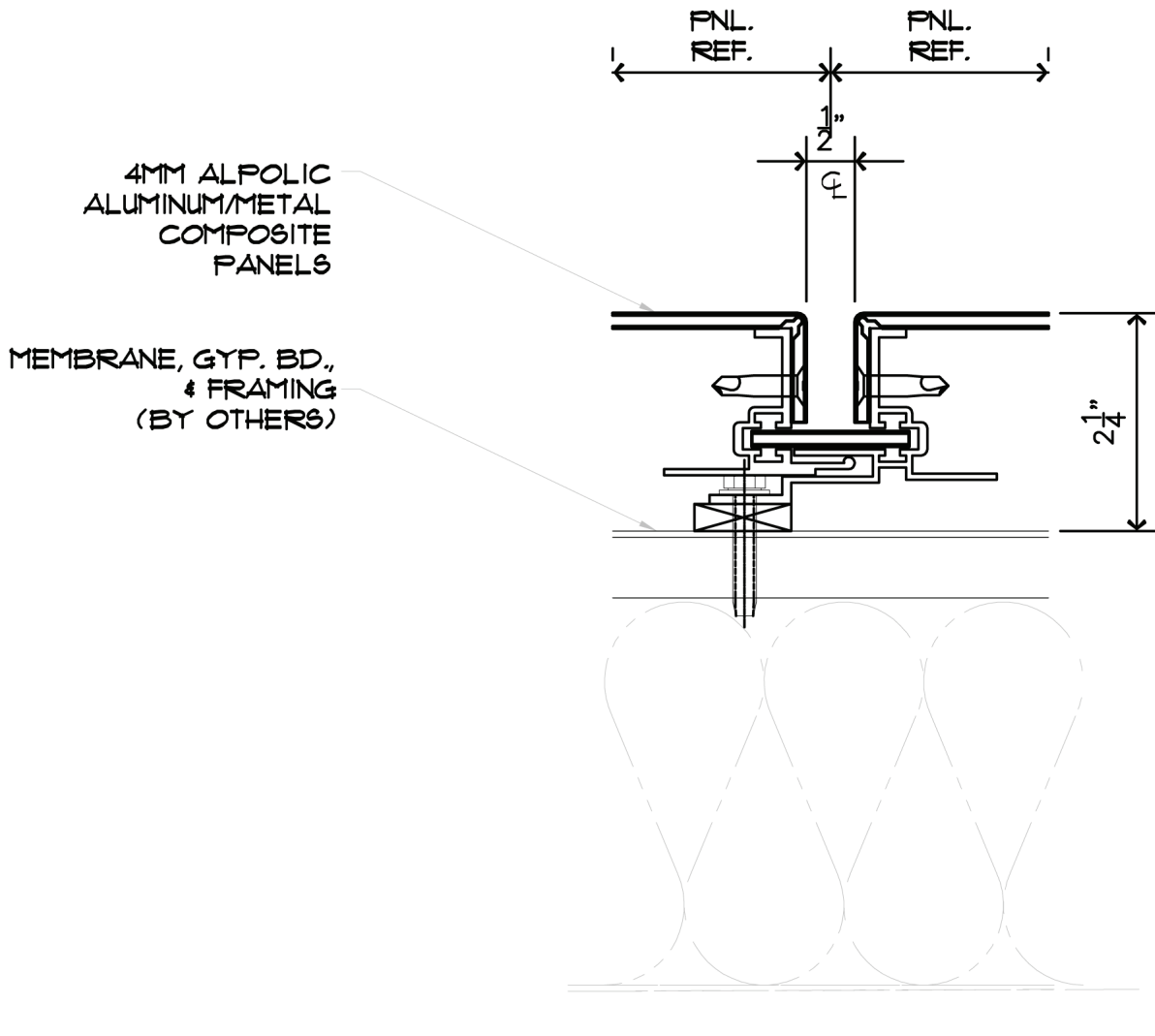
**ALUMICLAD**

The installation of the Alumiclad panels are the sole responsibility of the purchaser. The information contained on this website is for conceptual use only. Alumiclad shall have no responsibility or liability for the products usage or infringement of any patent or other proprietary right.



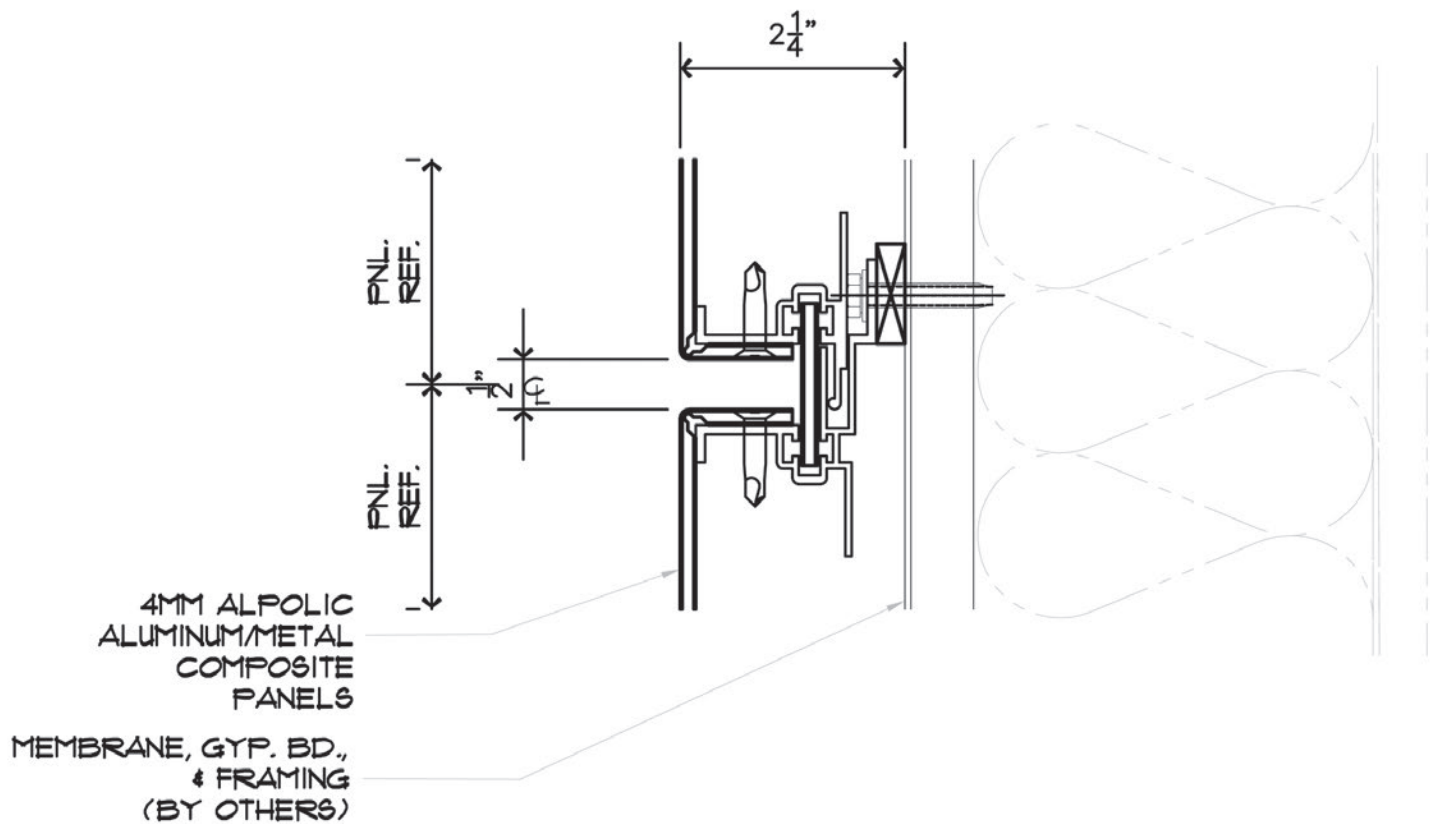
## SILL DETAIL

SCALE: 6" = 1'-0"



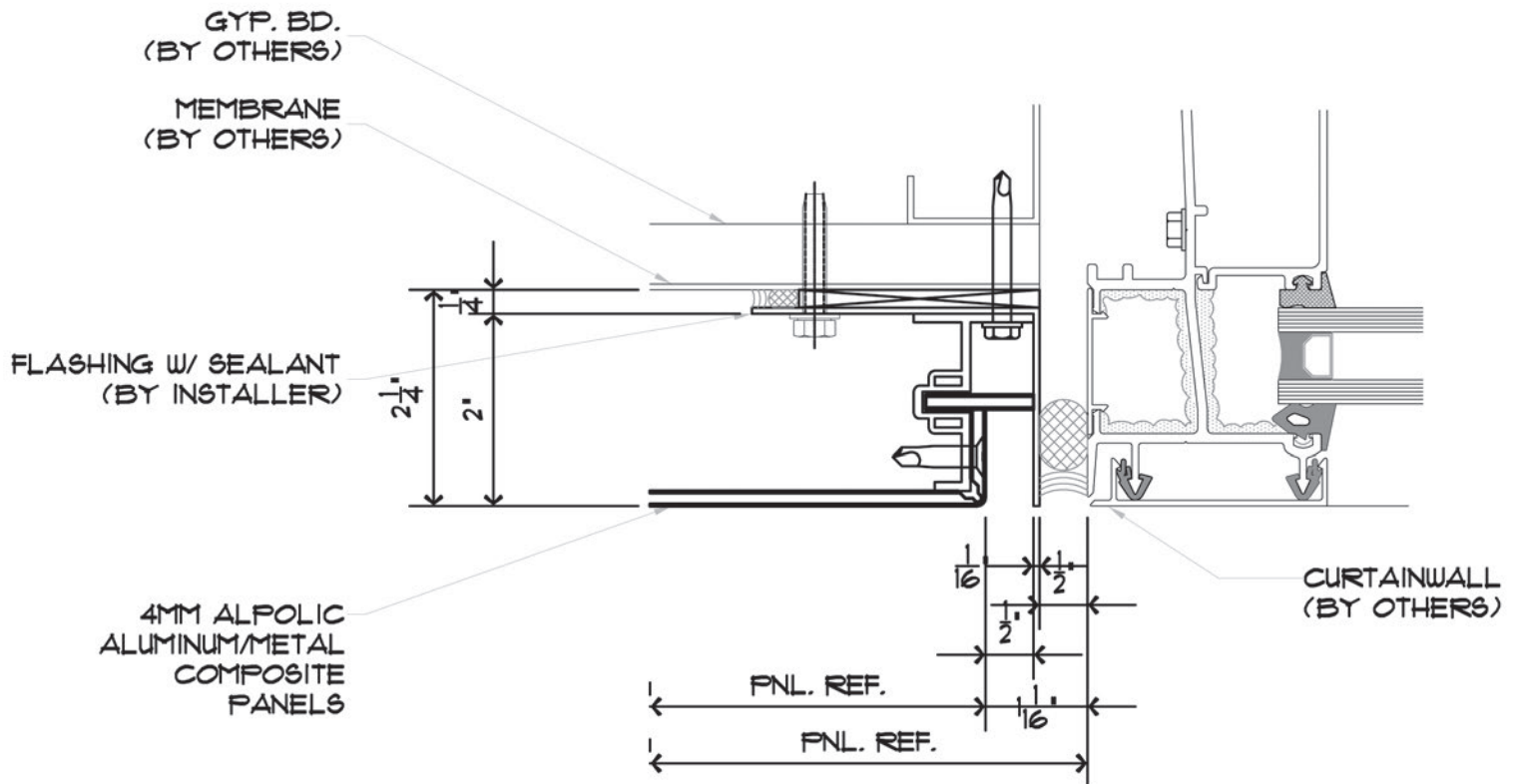
## VERTICAL JOINT

SCALE: 6" = 1'-0"



## HORIZONTAL JOINT

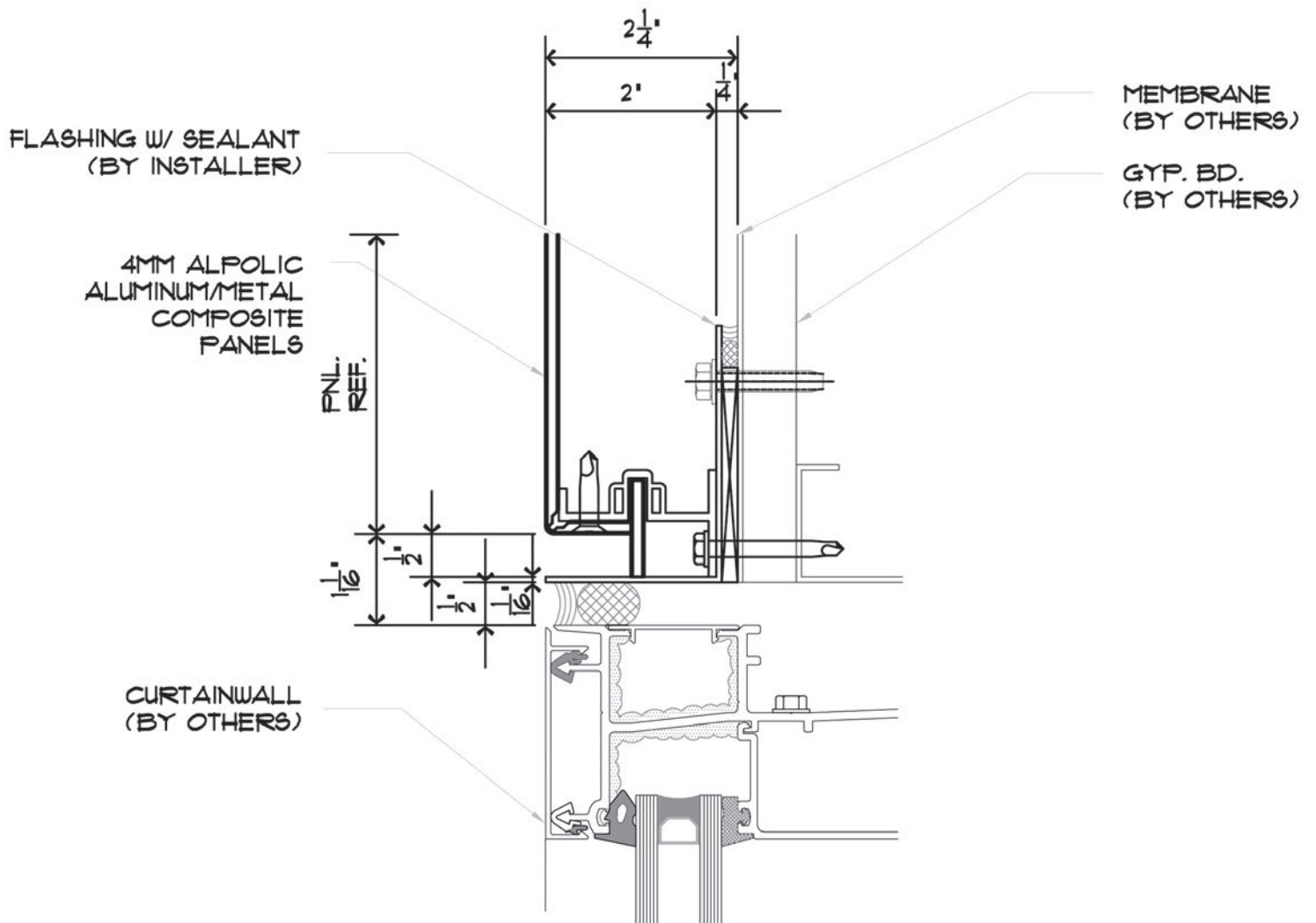
SCALE: 6" = 1'-0"



# 4 JAMB DETAIL

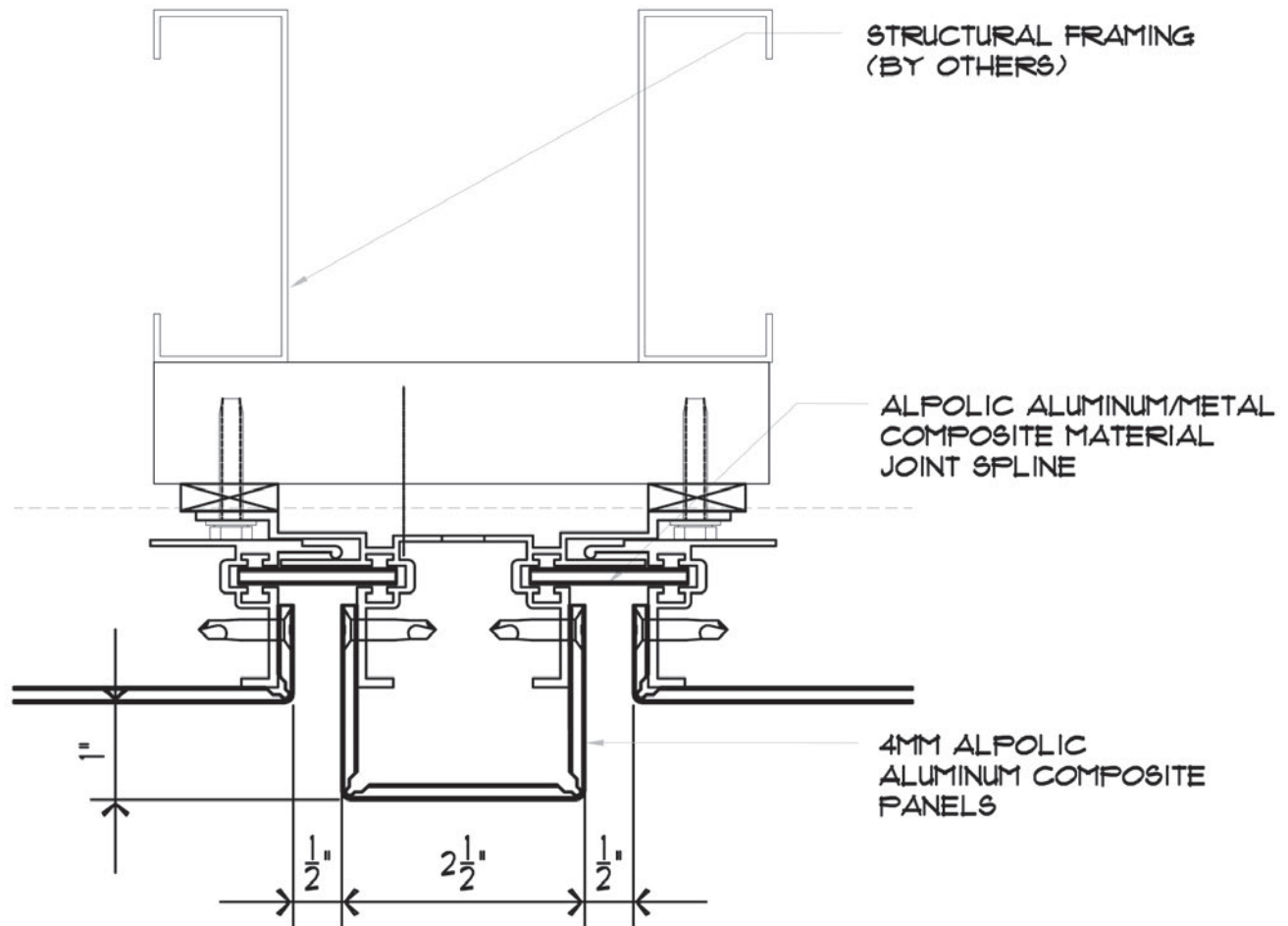
RS

SCALE: 6" = 1'-0"



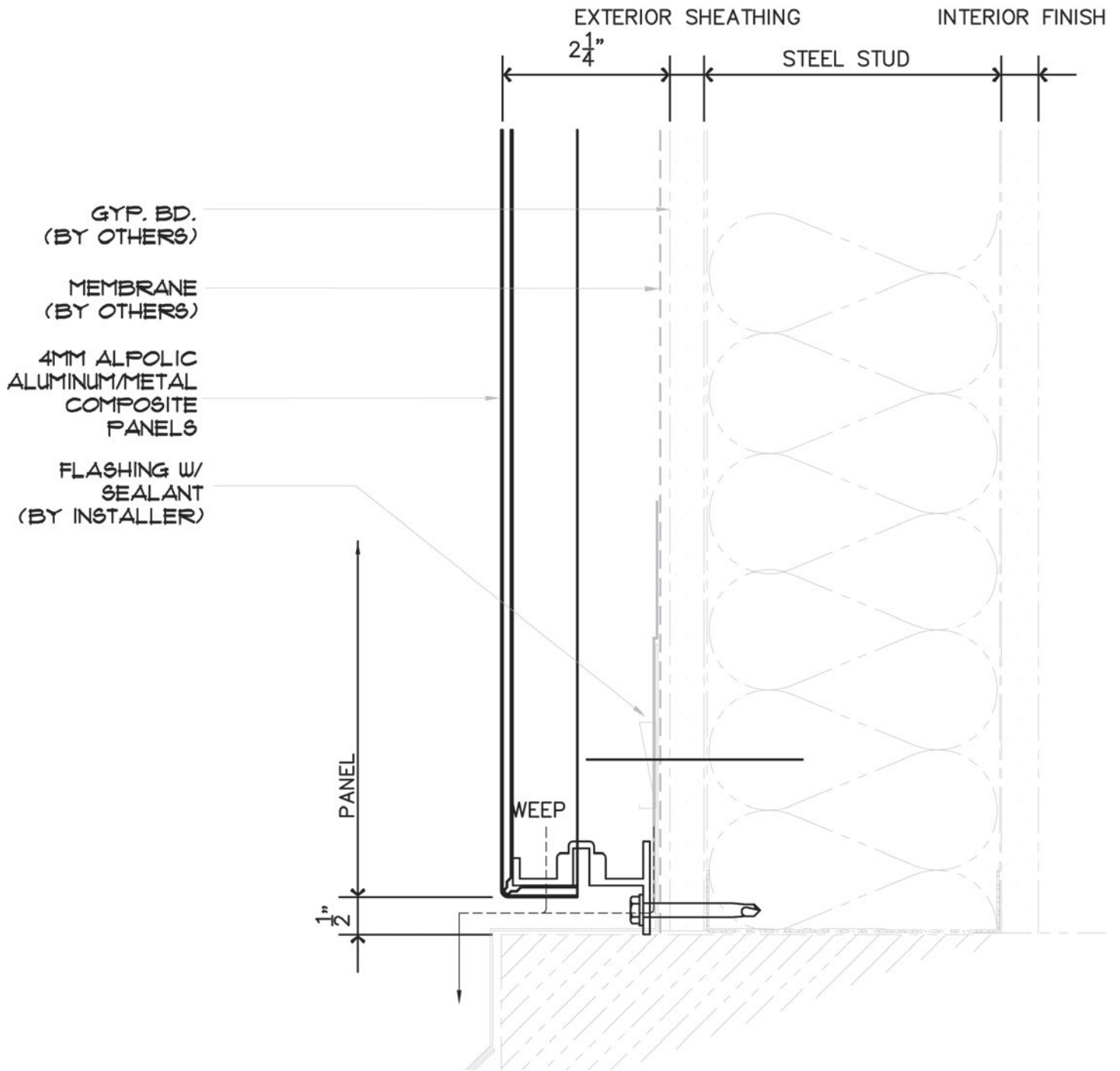
## HEAD DETAIL

SCALE: 6" = 1'-0"



## BATTEN DETAIL

SCALE: 6" = 1'-0"



7  
RS

BASE CONDITION

SCALE: 6" = 1'-0"



EXTERIOR SHEATHING

STEEL STUD

2 1/4"

PANEL REFERENCE

MEMBRANE, GYP. E  
& FRAMING  
(BY OTHERS)

4MM ALPOLIC  
ALUMINUM/METAL  
COMPOSITE  
PANELS

2 1/4"

4"

GWB OR OTHER  
SOFFIT MATERIAL  
(BY OTHERS)

8

RS

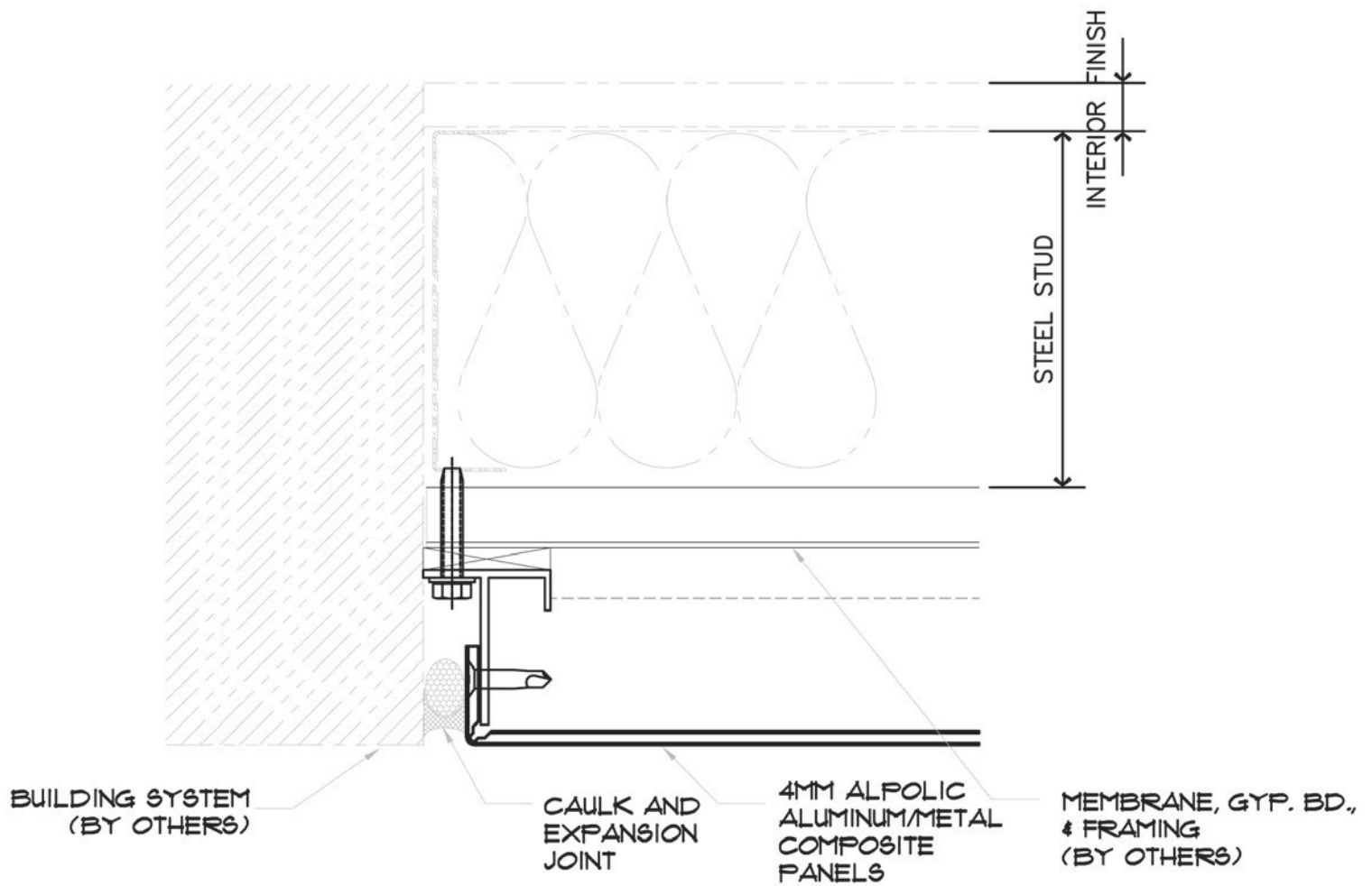
SOFFIT DETAIL

SCALE: 6" = 1'-0"

## RAIN SCREEN SYSTEM

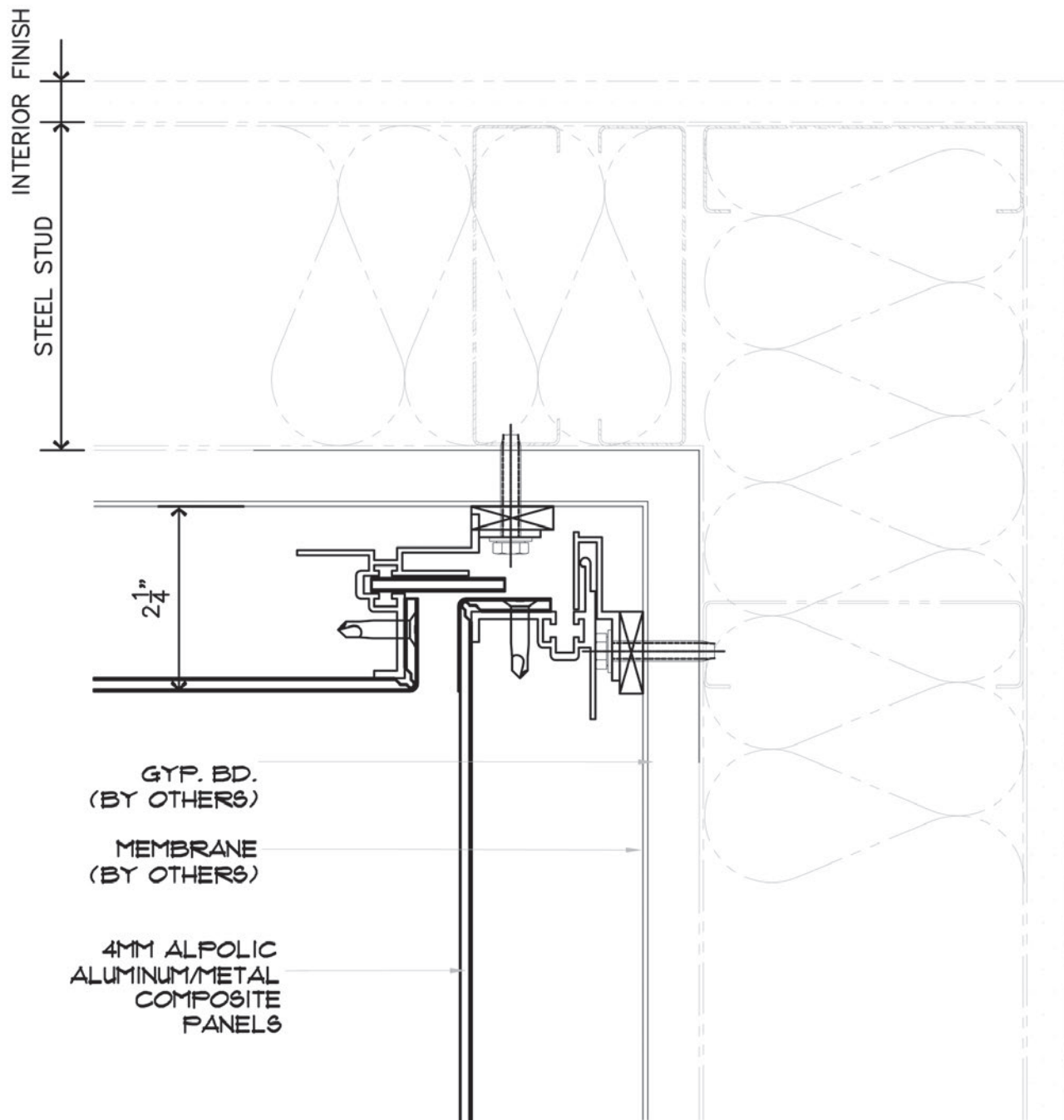
[www.alumiclad.ca](http://www.alumiclad.ca)

The installation of the Alumiclad panels are the sole responsibility of the purchaser. The information contained on this website is for conceptual use only. Alumiclad shall have no responsibility or liability for the products usage or infringement of any patent or other proprietary right.



## ABUTMENT DETAIL

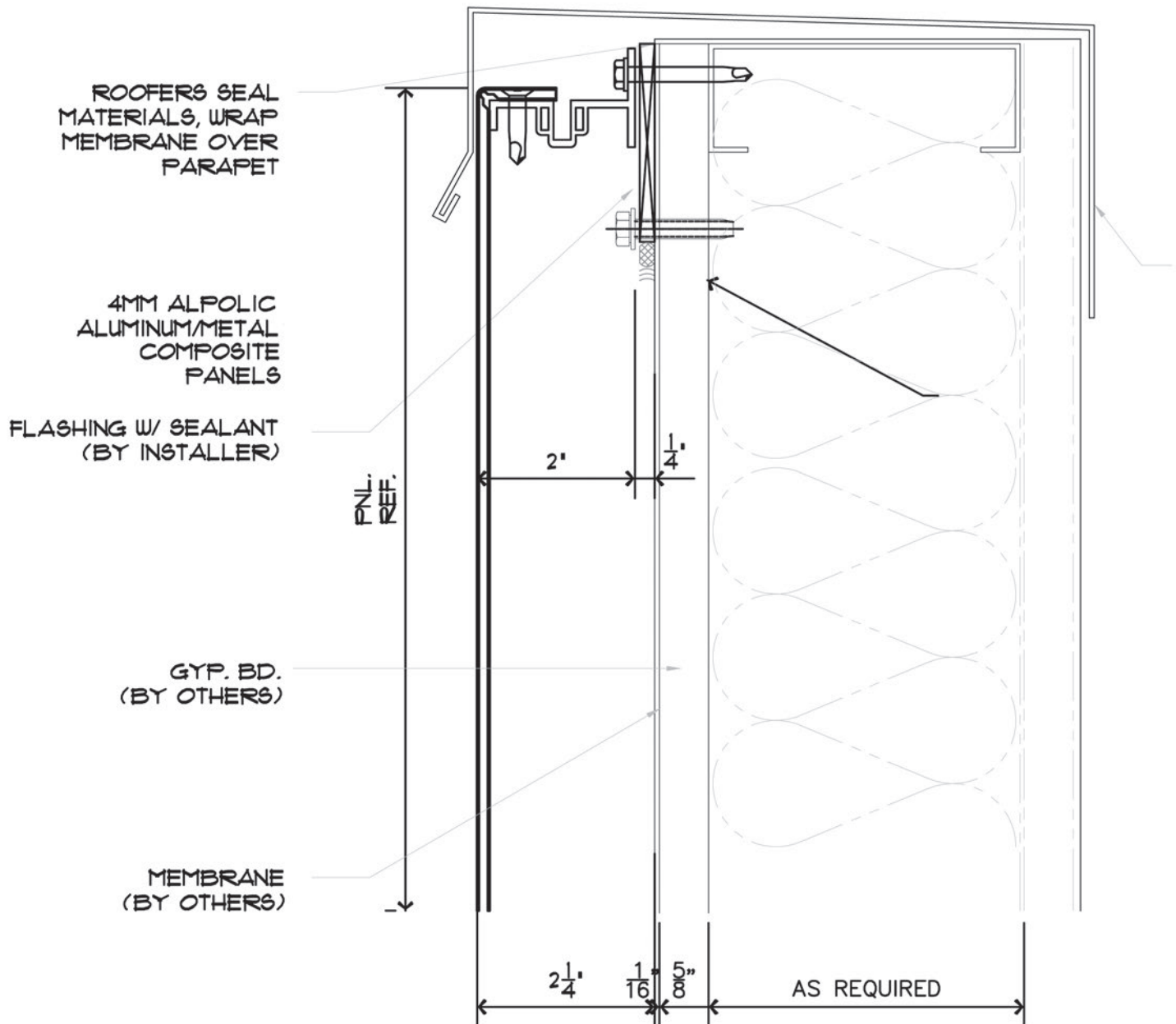
SCALE: 6" = 1'-0"



INSIDE CORNER

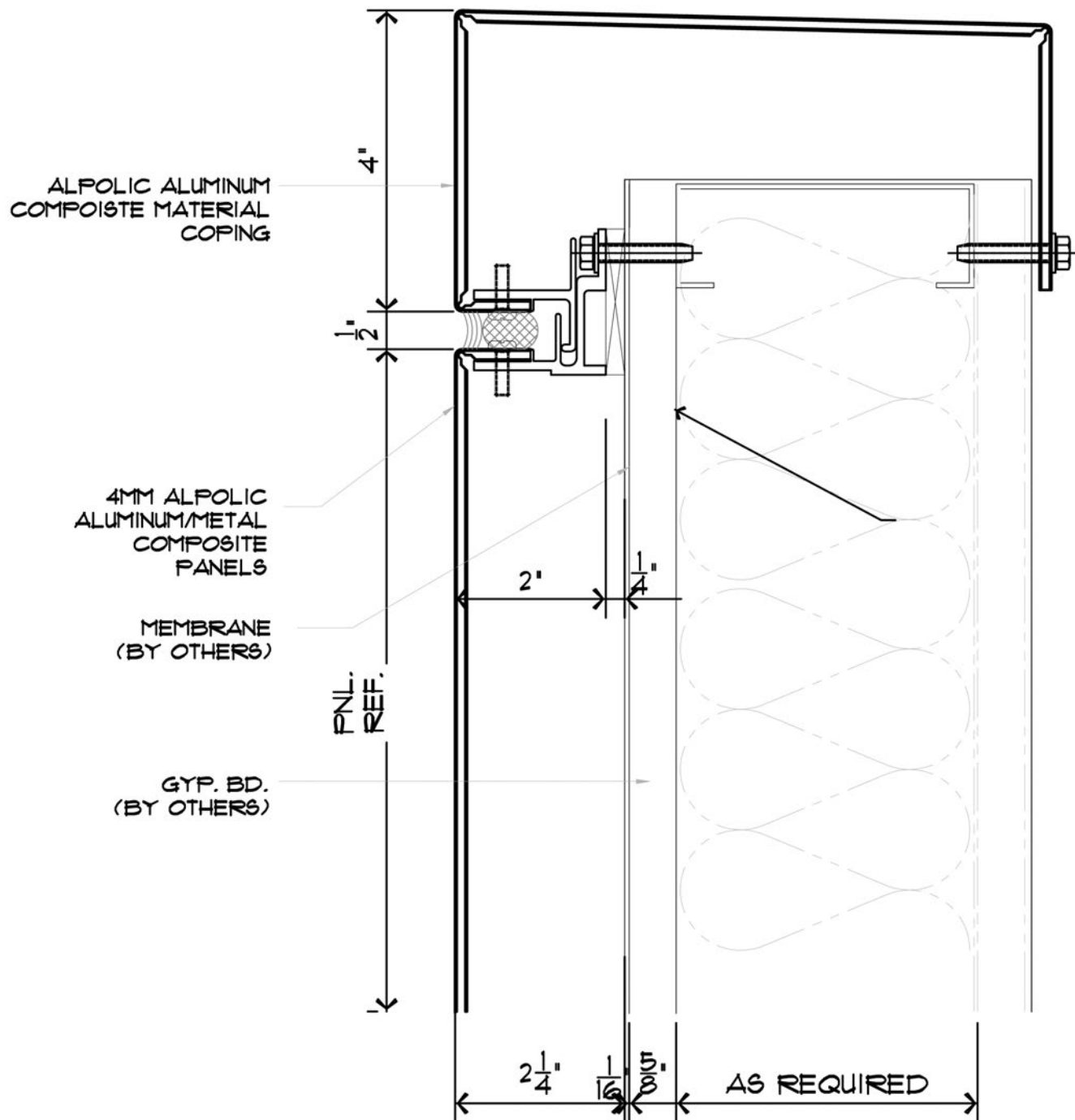
SCALE: 6" = 1'-0"





## PARAPET DETAIL

SCALE: 6" = 1'-0"



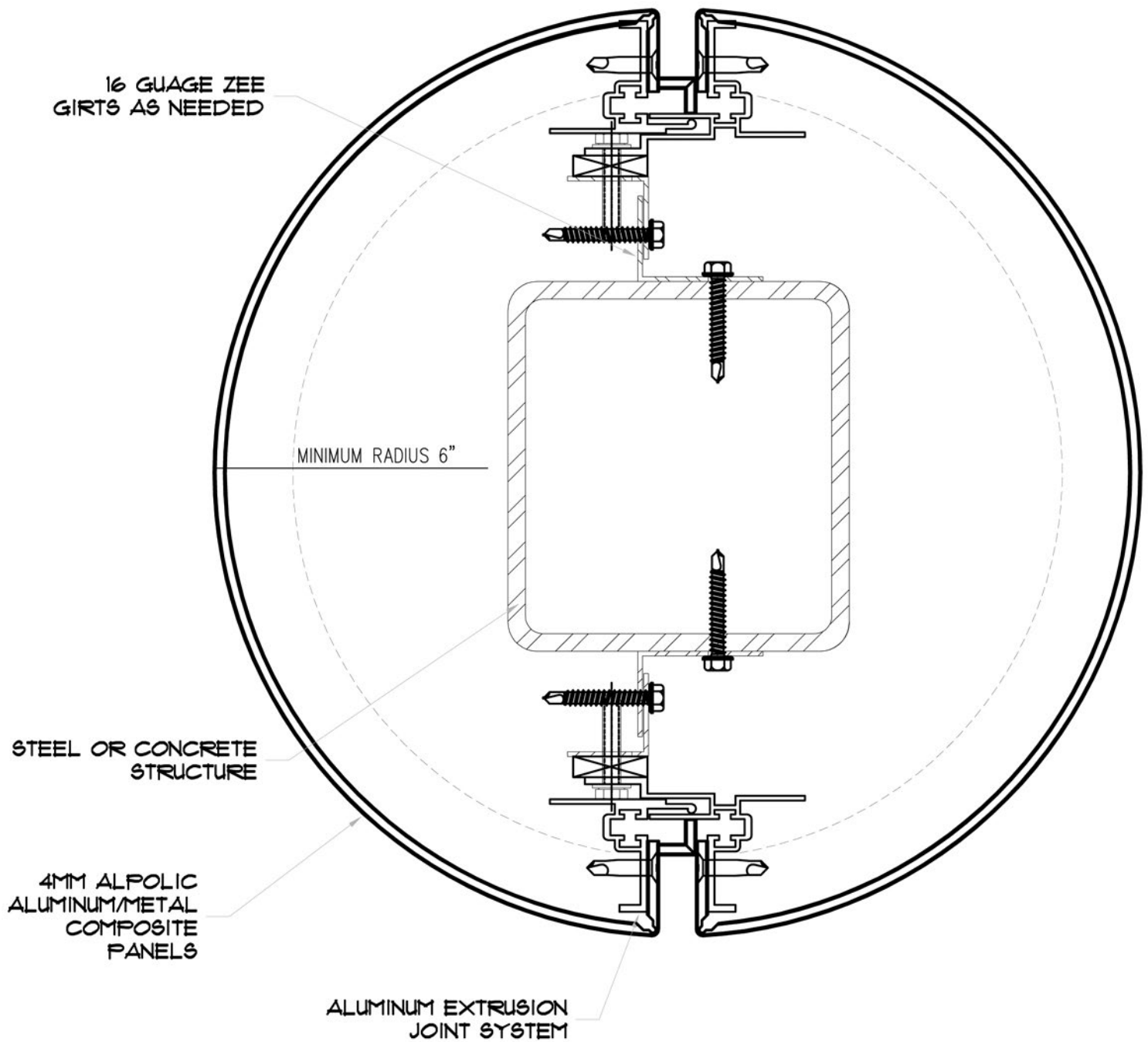
12A PARAPET DETAIL, OPTION 2  
RS SCALE: 6" = 1'-0"

**ALPOLIC®**  
METAL COMPOSITE MATERIALS

 MITSUBISHI CHEMICAL COMPOSITES AMERICA, INC.

RAIN SCREEN SYSTEM  
10.01.05  
[www.alpolic-americas.com](http://www.alpolic-americas.com)

The design, fabrication and installation of the ALPOLIC® panels are the sole responsibility of the purchaser. The information contained on this website is for conceptual use only. Mitsubishi Chemical Composites America, Inc. shall have no responsibility or liability for the products usage or infringement of any patent or other proprietary right.



13  
RS

## CIRCULAR COLUMN

SCALE: 6" = 1'-0"

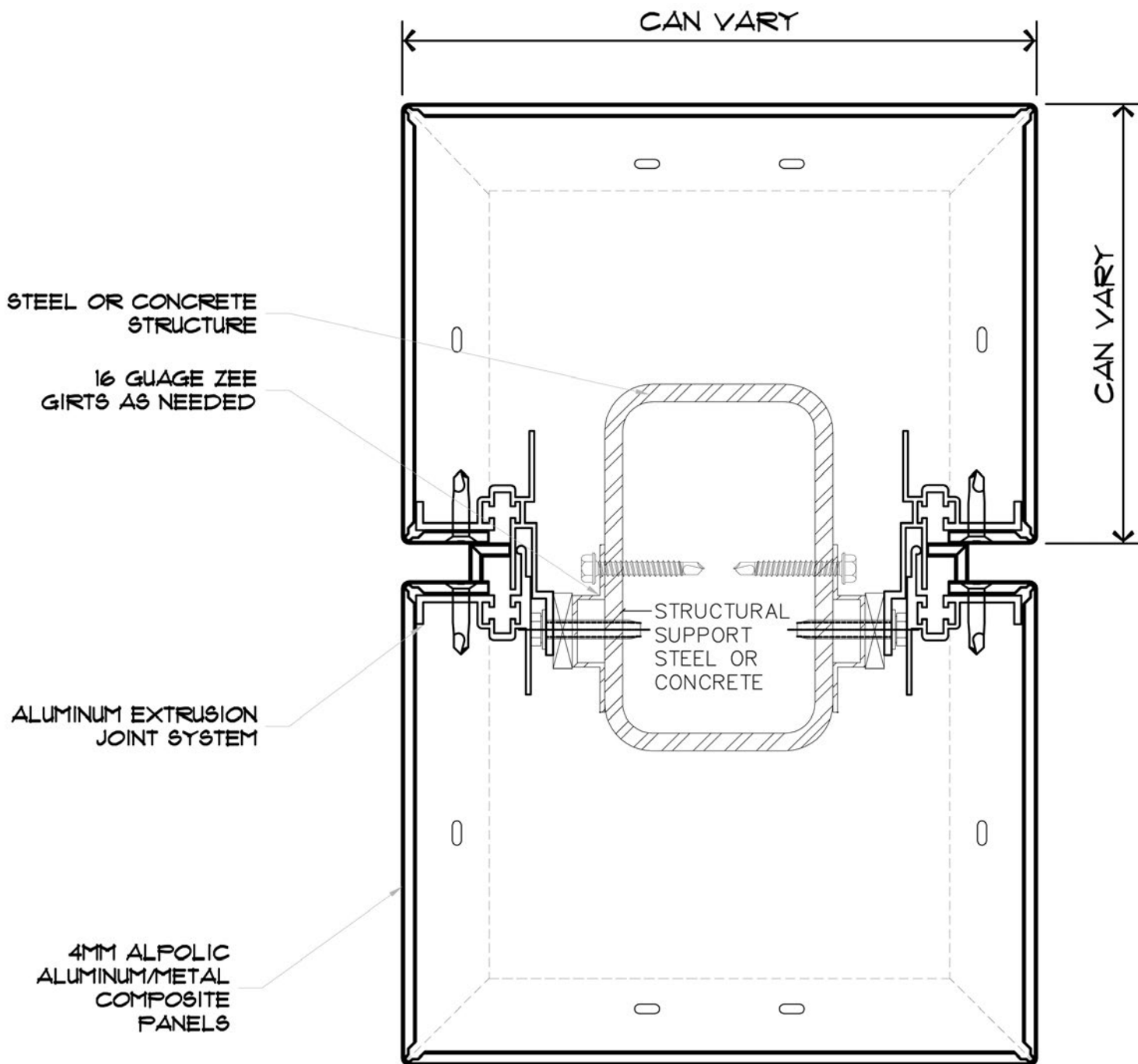
**ALPOLIC®**  
METAL COMPOSITE MATERIALS

 MITSUBISHI CHEMICAL COMPOSITES AMERICA, INC.

**RAIN SCREEN SYSTEM**  
**10.01.05**  
[www.alpolic-americas.com](http://www.alpolic-americas.com)

The design, fabrication and installation of the ALPOLIC® panels are the sole responsibility of the purchaser. The information contained on this website is for conceptual use only. Mitsubishi Chemical Composites America, Inc. shall have no responsibility or liability for the products usage or infringement of any patent or other proprietary right.





14 RS SQUARE COLUMN  
SCALE: 6" = 1'-0"

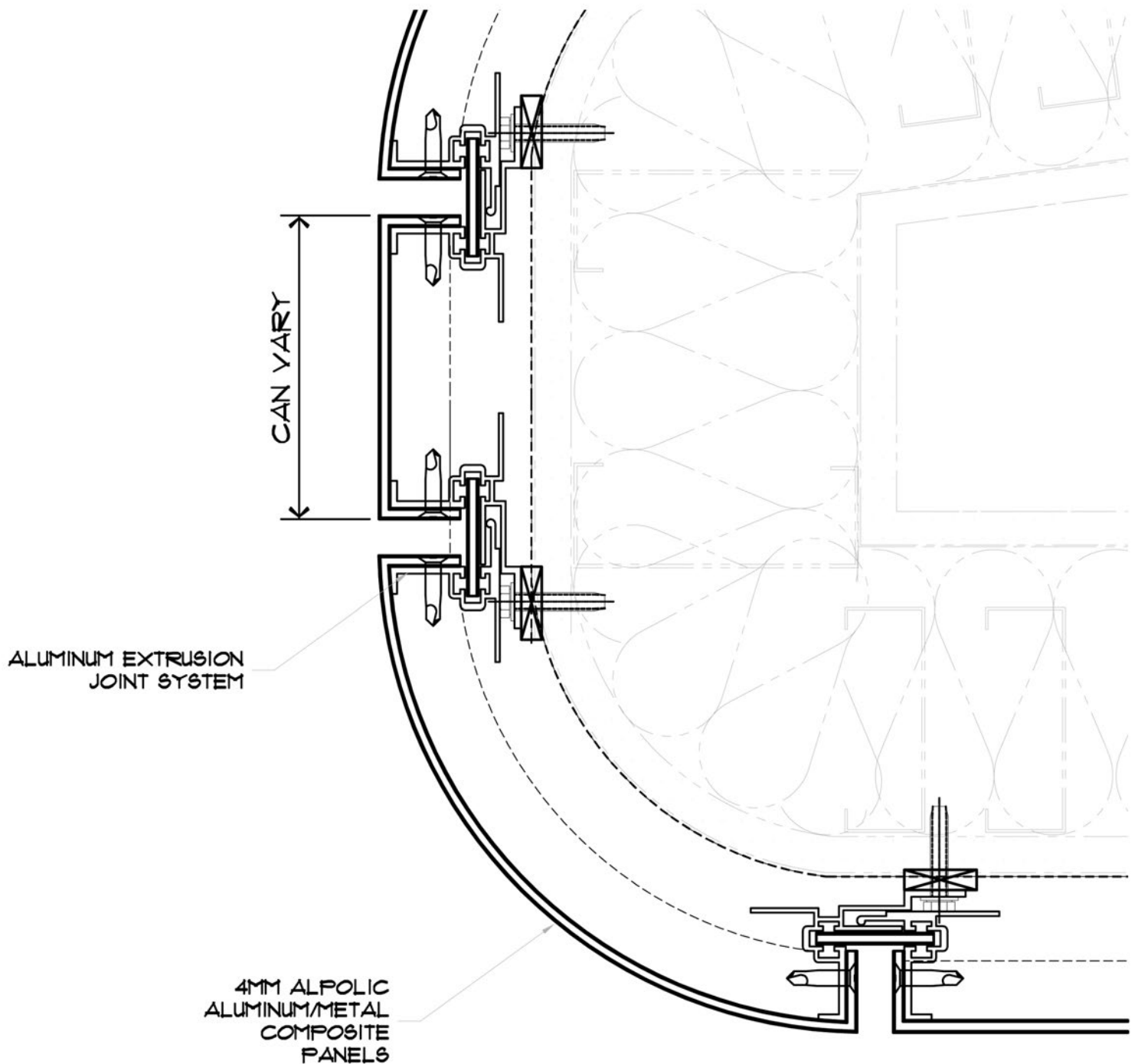
**ALPOLIC®**  
METAL COMPOSITE MATERIALS

 MITSUBISHI CHEMICAL COMPOSITES AMERICA, INC.

RAIN SCREEN SYSTEM  
10.01.05  
[www.alpolic-americas.com](http://www.alpolic-americas.com)

The design, fabrication and installation of the ALPOLIC® panels are the sole responsibility of the purchaser. The information contained on this website is for conceptual use only. Mitsubishi Chemical Composites America, Inc. shall have no responsibility or liability for the products usage or infringement of any patent or other proprietary right.





CANOPY/SUNSHADE

SCALE: 6" = 1'-0"

**ALPOLIC®**  
METAL COMPOSITE MATERIALS

 MITSUBISHI CHEMICAL COMPOSITES AMERICA, INC.

**RAIN SCREEN SYSTEM**  
**10.01.05**  
[www.alpolic-americas.com](http://www.alpolic-americas.com)

The design, fabrication and installation of the ALPOLIC® panels are the sole responsibility of the purchaser. The information contained on this website is for conceptual use only. Mitsubishi Chemical Composites America, Inc. shall have no responsibility or liability for the products usage or infringement of any patent or other proprietary right.