

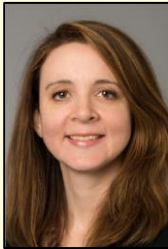


## Fairbanks Lecture Series in Clinical Ethics

# Merging Obstetric and Neonatal Care

Date: 10/06/21 | Time: 12:00-1:00pm

Live Stream via Zoom Webinar



**Caroline Rouse, MD**

**Maternal-Fetal Medicine**

*Medical Director; Labor & Delivery*

*Co-Director; OB ICU*

*Riley Children's Health – Indiana University Health*

### Objectives:

1. Discuss the move of pregnant patients from Methodist to Riley Maternity Tower.
2. Identify Perinatal Levels of Care and how this designation affects the care of our patients at the Maternity Tower.
3. Discuss case studies in which maternal and fetal care appear to be in opposition.

### Registration Required:

[https://iu.zoom.us/webinar/register/WN\\_Wj09d\\_EjTkSMLEZwNZdMrQ](https://iu.zoom.us/webinar/register/WN_Wj09d_EjTkSMLEZwNZdMrQ)

The Ethics Lecture Series is free and open to all. Continuing education credit is offered to physicians, nurses, social workers, psychologists, and chaplains at no charge, regardless of their institutional affiliation. For additional information about the Charles Warren Fairbanks Center for Medical Ethics, please visit our website at [www.fairbankscenter.org](http://www.fairbankscenter.org).



**Accreditation Statement:** In support of improving patient care, this activity has been planned and implemented by Indiana University School of Medicine and IU Health. Indiana University School of Medicine is jointly accredited by the Accreditation Council for Continuing Medical Education (ACCME), the Accreditation Council for Pharmacy Education (ACPE), and the American Nurses Credentialing Center (ANCC), to provide continuing education for the healthcare team. **Designation Statement: Physicians**—Indiana University School of Medicine designates this live activity for a maximum of 1.0 *AMA PRA Category 1 Credits™*. Physicians should claim only the credit commensurate with the extent of their participation in the activity. **Disclosure Statement:** Indiana University School of Medicine (IUSM) policy ensures that those who have influenced the content of a CE activity (e.g. planners, faculty, authors, reviewers and others) disclose all relevant financial relationships with any ineligible companies so that IUSM may identify and mitigate any conflicts of interest prior to the activity. All educational programs sponsored by Indiana University School of Medicine must demonstrate balance, independence, objectivity, and scientific rigor. **There are no relevant financial relationship(s) with ineligible companies for anyone who was in control of the content of this activity.** An **ineligible company** is any entity whose primary business is producing, marketing, selling, re-selling, or distributing healthcare products used by or on patients.

Indiana University Health is approved as a provider of nursing continuing professional development by the Ohio Nurses Association, an accredited approver by the American Nurses Credentialing Center's Commission on Accreditation. (OBN-001-91). Indiana University Health, Indianapolis, has been approved by the Indiana Social Worker, Marriage and Family Therapist and Mental Health Counselor Board to provide Category I Continuing Education programs for: LSW, LCSW, LMFT, LMHC, LMFTA, LCAC and LAC. Indiana University Health, Indianapolis, has been approved by the Indiana Professional Licensing Agency, the Indiana State Psychology Board and Indiana Behavioral Board to provide Category I Continuing Education for Psychology.