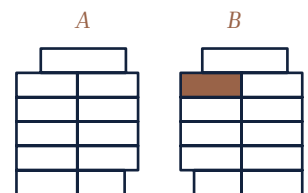
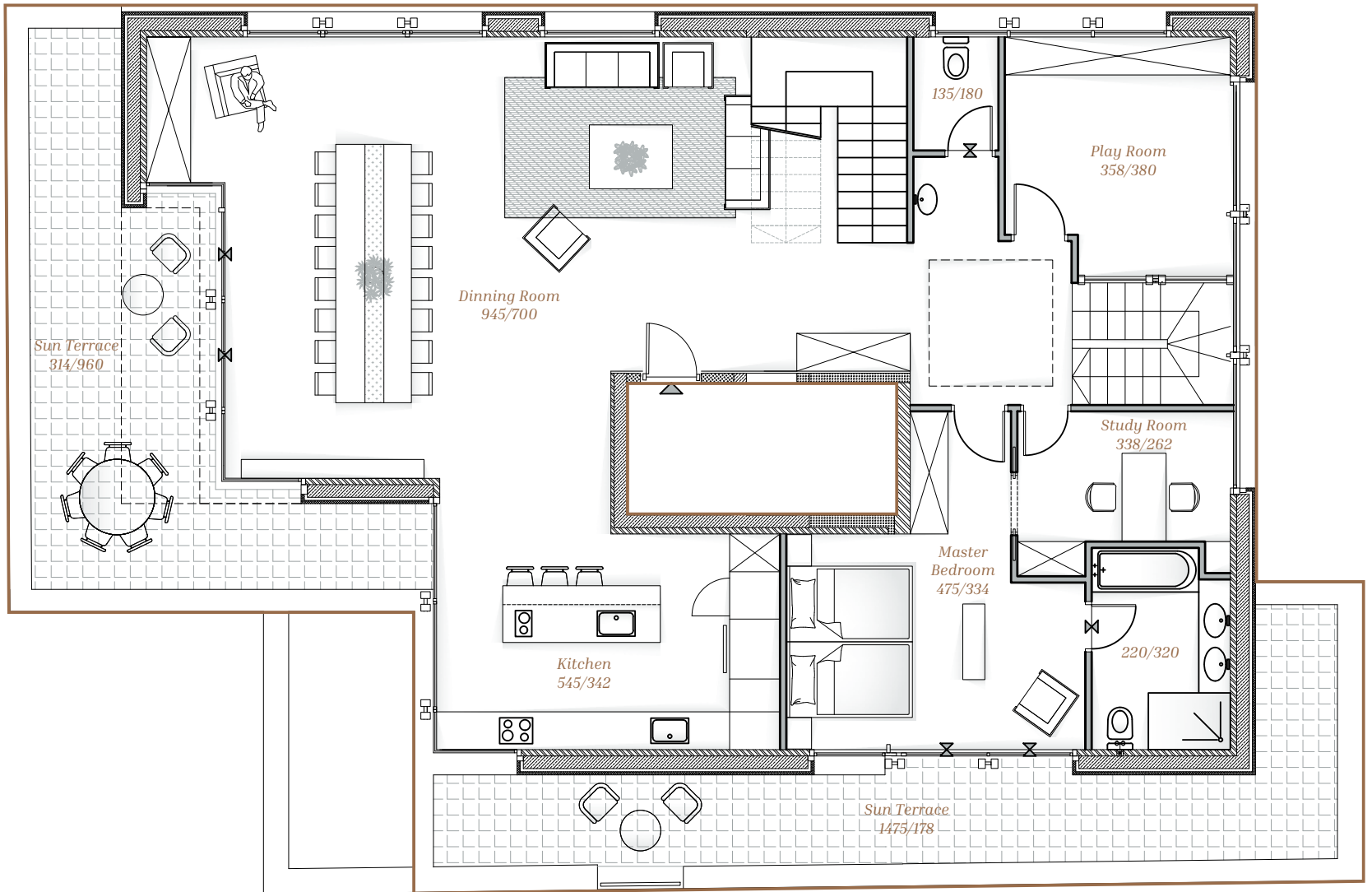


**HEART OF ETERNITY**

*Apartment 12*  
*282 Sqm.*  
*Floor 3 - 106 Sqm.*

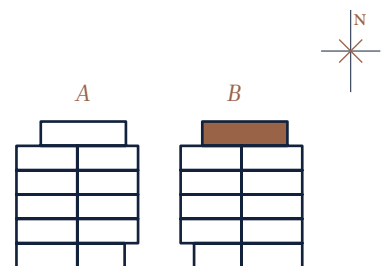


Ibn Guviol Street



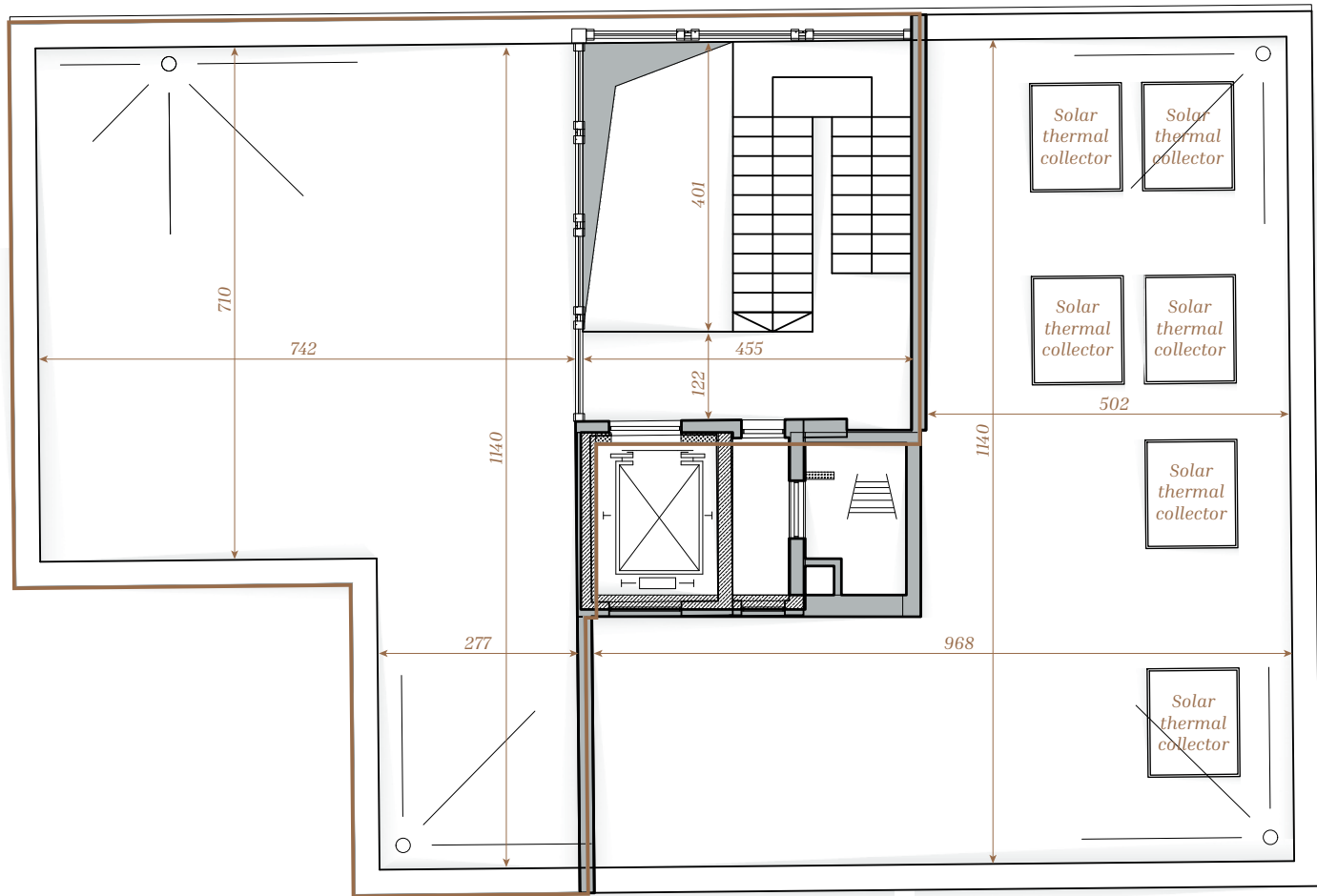
## HEART OF ETERNITY

*Apartment 12*  
*282 Sqm.*  
*Floor 4 - 176 Sqm.*  
*Balcony - 74 Sqm.*



Anything written and presented in this document is for purposes of demonstration only and may not be regarded as a representation or a proposal, nor will it be part of the conditions of the Sale Agreement, its appendices or the commitment between the parties.

Ibn Guinol Street



## HEART OF ETERNITY

*Apartment 12*  
*282 Sqm.*  
*Roof - 103 Sqm.*

