

荷兰阿米尔的羊棚 Sheepstable Almere, Netherlands

建筑师: 70F Architecture
竣工时间: 2007

阿米尔市有大约 80 只羊, 这支羊群不断被迁移, 以保证生长在森林和阿米尔公园中的“叶藓属植物”等旺盛的杂草能够得到控制。为了将这些羊集中圈养起来, 需要建一个羊棚。

羊棚被设计为横截面不对称的结构。羊群圈养区相对较低, 而较高部分则位于(公共)通道和干草储藏区的上方, 以便能够最大限度地储存干草。这种形状还为建筑内部的自然通风创造了条件, 新鲜空气经由建筑较长的两侧底部的两处狭缝不断进入。

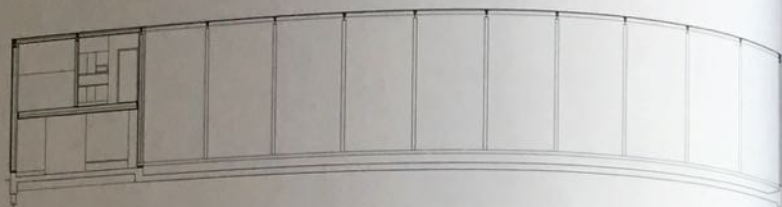
羊棚转角处细部设计, 即长立面末端和山墙前端的交会处, 对建筑的整体感觉是非常重要的。它强调了建筑横截面的形状, 并且逐渐改变了建筑的长形立面形式——立面逐渐变为屋顶。

建筑的结构和覆层分别由松木和红雪松制成。只有曲梁是钢制的, 这是为了突出室内的管状造型。同时, 若舍钢梁而用木梁的话, 建筑的坚固度也会降低。

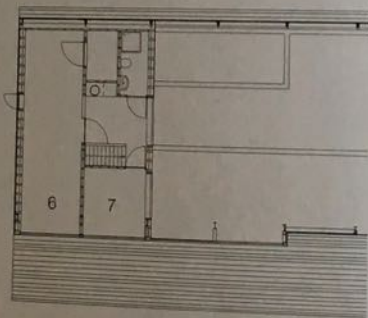
管形结构上有三个特别设置的开口, 其中有一个与楼板层相邻, 这样人们在任何时候都能看到羊棚的内部情况。羊棚内的所有垂直墙体和办公室均使用山毛榉胶合板覆层。

羊棚的设计使公众或学生都能够参观建筑, 并近距离地体验养羊的过程。在建筑二层的一端设有牧羊人的房间和一个小办公室。牧羊人还有专门的睡觉设施, 因为他必须在这留宿, 以防有羊在夜里生产。羊棚内部和周围的工作由一些心智不健全或有精神障碍的人在牧羊人的辅助之下完成。

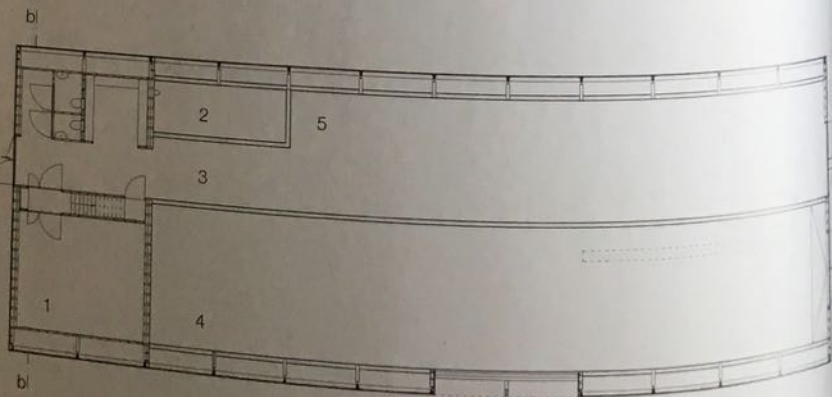
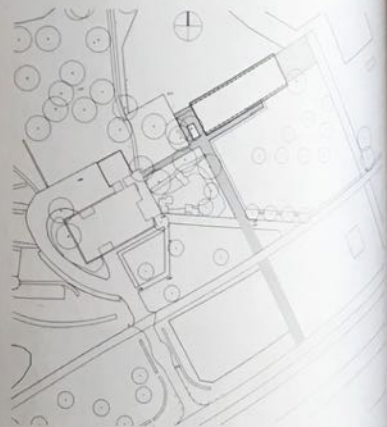
除了公共功能之外, 穆斯林社区还在这里购买羔羊, 用于每年一度的宗教仪式。



aa



二层
First floor



一层
Ground floor



垂直剖面 比例 1:10

- 1 35mm 铝质曲状泛水板
- 2 2层改性沥青板屋面
- 3 9mm 防水胶合板
- 4 22mm x 46mm 木板条, 中心距500mm
- 5 71mm x 171mm 梁, 中心距500mm
- 6 保温层, Rc=3.5
- 7 扩散式渗透薄膜
- 8 22mm x 46mm 木板条, 中心距500mm
- 9 9mm 石膏板
- 10 6mm 灰泥
- 11 22mm x 100mm 木板条
- 12 钢梁, IPE 270, 中心距3000mm
- 13 红色松斜面护墙板
- 14 22mm x 46mm 木板条, 中心距500mm
- 15 71mm x 271mm 框架
- 16 保温层, Rc=3.5
- 17 扩散式渗透薄膜
- 18 12mm 桦木胶合板
- 19 71mm x 271mm 浸渍木底座
- 20 271mm x 200mm 钢筋混凝土门槛
- 21 250mm 钢筋混凝土地面

Vertical section Scale 1:10

- 1 35mm aluminium curved flashing
- 2 2-ply modified bitumen, roofing
- 3 9mm water resistant plywood
- 4 22mm x 46mm batten, c.c. 500mm
- 5 71mm x 171mm beams, c.c. 500mm
- 6 insulation, Rc=3.5
- 7 diffusion permeable membrane
- 8 22mm x 46mm batten, c.c. 500mm
- 9 9mm gypsum board
- 10 6mm stucco
- 11 22mm x 100mm batten
- 12 steel girder IPE 270, c.c. 3000mm
- 13 Western Red Cedar bevel sidings
- 14 22mm x 46mm batten, c.c. 500mm
- 15 71mm x 271mm framing
- 16 insulation Rc=3.5
- 17 diffusion permeable membrane
- 18 12mm Birch plywood
- 19 71mm x 271mm impregnated wooden sill
- 20 271mm x 200mm reinforced concrete threshold
- 21 250mm reinforced concrete floor

总平面图
比例 1:2500

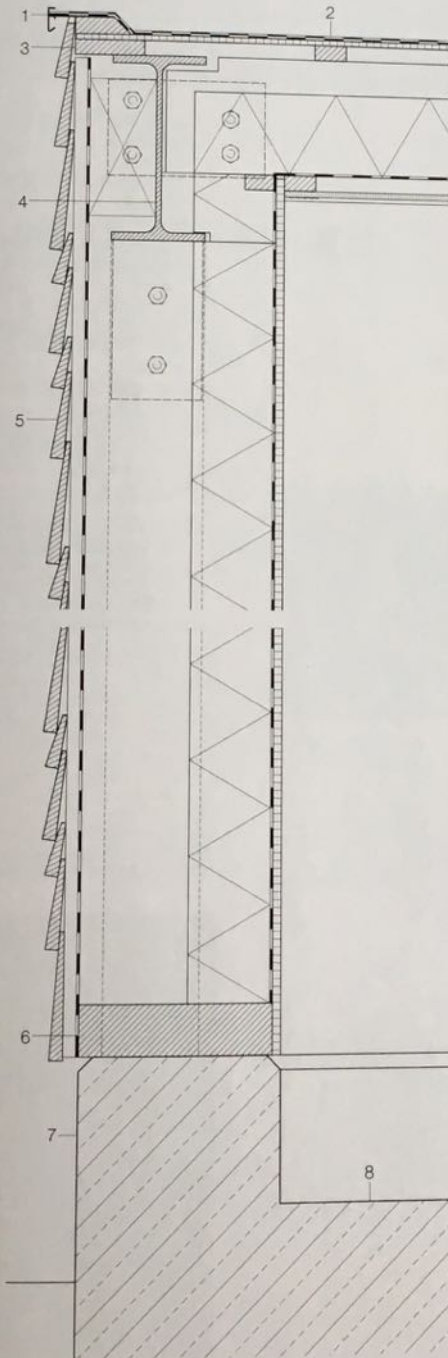
Site plan
Scale 1:2500

楼层平面图
比例 1:300

Floor plans
Sections
Scale 1:300

- 1 镇圃区
- 2 产羔区
- 3 参观通道
- 4 羊棚
- 5 干草储备区
- 6 办公室
- 7 牧羊人房间

- 1 storage
- 2 lambing area
- 3 visitor's pathway
- 4 stable
- 5 hay storage
- 6 office
- 7 shephard



The city of Almere has a sheep population of about 80. The sheep are mobilized to keep the powerful weed "acanthus" that grows in the forest and park in Almere under control. To centralize and house this population, a sheep stable was needed.

The stable is designed with an asymmetrical homogeneous cross-section. The part of the building where the sheep reside is relatively low; the high part is situated above the (public) pathway and the hay storage section, making it possible to store a maximum amount of hay. This shape also creates a natural flow for the air inside the building, which is refreshed by two slits at the foot of each long side of the building.

The detailing of the corner of the building, where the long facade ends and the gable starts, is extremely important for the overall experience of the architecture of this building. It emphasises the cross sectional shape of the building, and finishes the long facade of the building, which starts as a facade and slowly becomes roof.

The construction (pine) and cladding (Western Red Cedar) are made of wood. Only the curved girders are made of steel. This was done to emphasise the tube-like shape of the interior, which would have been less strong using twice as high wooden girders.

The tube has three strategically placed daylight openings, of which one is close to the floor level, so people can look inside even when the building is closed. All vertical walls in the stable and office are clad with beech plywood.

The stable is designed to make it possible for the public or school classes to visit the building and experience the keeping of sheep up close. At one end of the building, on the second floor, a room for the shepherd and a small office is realised. There are sleeping facilities for the shepherd, who has to stay over night in case any sheep are lambing. Work in and around the stable will be done by, amongst others, people who live with a mental, social or psychiatric disability, supervised by the shepherd. Apart from the public function, the Muslim community will be able to buy the lambs they need for yearly ritual purposes.

718

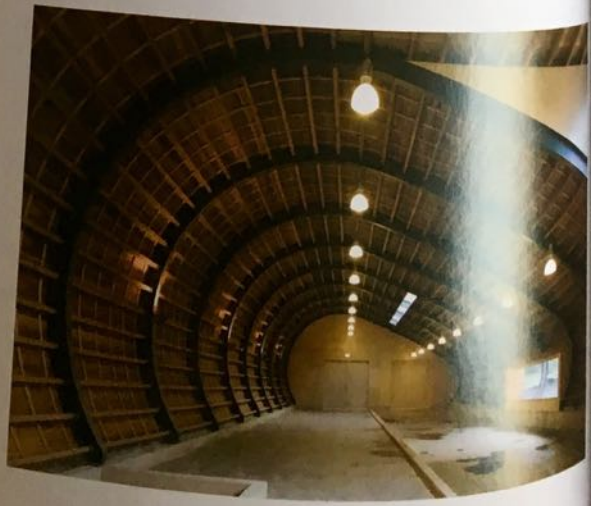
木
SI
一
建
楼



垂直剖面
比例 1:10
Vertical section
Scale 1:10



- 1 200mm钢筋混凝土基础
 - 2 弯曲钢梁脚
 - 3 总饮水槽
 - 4 50mm镀锌管(内含水管与输热管线)
 - 5 150mm管托, 间距1000mm
 - 6 50mm不锈钢网通风口
 - 7 护墙板和木板层间的泡沫密封胶条
 - 8 护墙板间的泡沫密封胶条
 - 9 71mm x 171mm木梁, 间距500mm
 - 10 红雪松斜面护墙板, 有三种随机尺寸: 19mm x 175/125/75mm
 - 11 2层11mm x 46mm弯曲胶合木板条, 中心距500mm
 - 12 钢梁, IPE 270, 间距3000mm
 - 13 通风口
 - 14 2mm 铝质玻璃支架
 - 15 单层层压玻璃
 - 16 L20mm x 10mm x 2mm固定玻璃的铝架
 - 17 71mm x 38mm梅兰蒂木窗框
 - 18 8mm防水胶合板
 - 19 双层改性沥青
-
- 1 200mm reinforced concrete foundation
 - 2 curved steel girderfoot
 - 3 global position drinkingbeaker
 - 4 50mm galvanised pipe (waterpipe and thermowire inserted)
 - 5 150mm pipebracket, c.c. 1000mm
 - 6 50mm stainless steel net ventilation opening
 - 7 foam sealant tape between sidings and battens
 - 8 foam sealant tape between sidings and battens
 - 9 71mm x 171mm wooden beam, c.c. 500mm
 - 10 Western Red Cedar bevel sidings, 3 sizes random: 19mm x 175/125/75mm
 - 11 2 x 11mm x 46mm curved batten, glued, c.c. 500mm
 - 12 steel girder IPE 270, c.c. 3000mm
 - 13 ventilation opening
 - 14 2mm aluminium glass brackets
 - 15 layered glass, single
 - 16 L20mm x 10mm x 2mm aluminium glassholder
 - 17 71mm x 38mm meranti windowframe
 - 18 8mm plywood, water resistant
 - 19 2-ply modified bitumen



bb