

The background of the slide features a dark blue color with a subtle, light blue circuit-like pattern. This pattern consists of various lines, nodes, and junctions, resembling a network or a complex circuit board, which adds a technical and digital feel to the design.

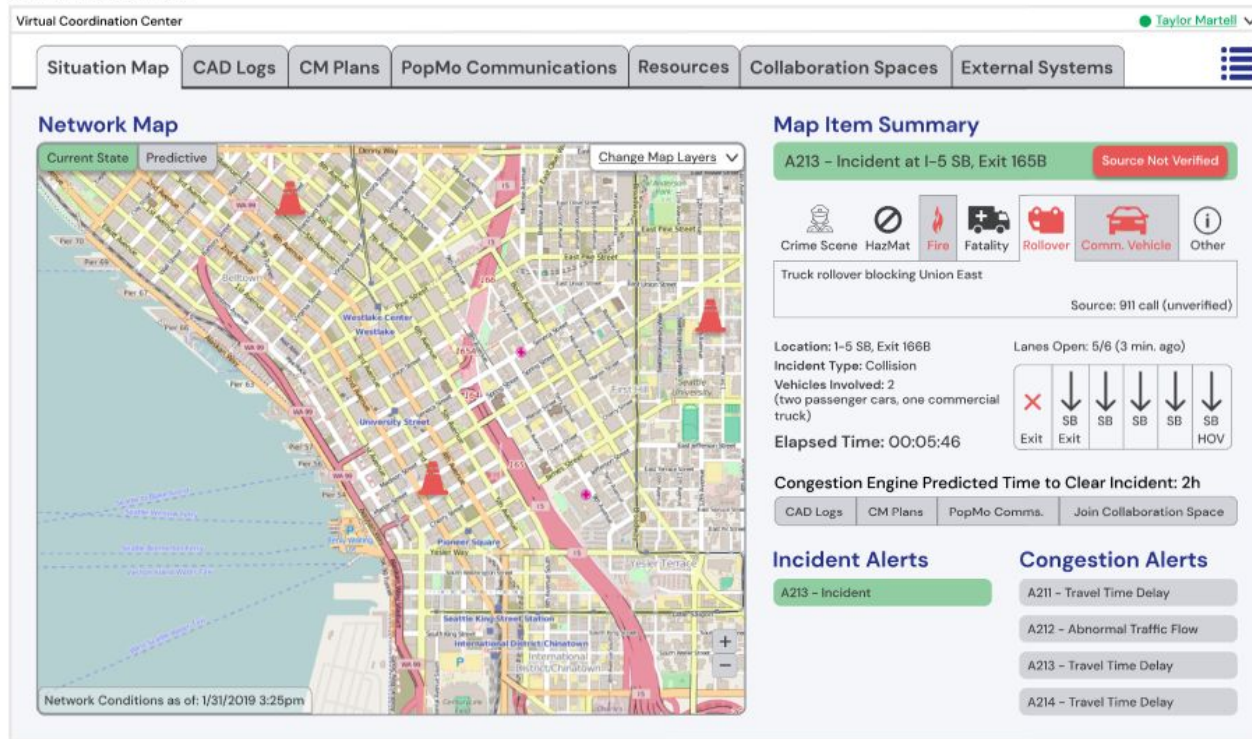
# **Coordinated Resource Management:** A VCC Incident Response Dashboard

**wireframes**

kari bergstedt | lexi rohrer | theresa tran | kay waller

# Situation Map

3:25PM - Situation Map



## Overall workflow

1. User turns on the resources layer by clicking the resources checkbox under "Change Map Layers"
2. User can hover over each cone icon to see the resources currently in use at the scene and which agency they belong to
3. This screen is purely passive, and no actions can be taken except the hover on this screen

Situation Map

CAD Logs

CM Plans

PopMo Communications

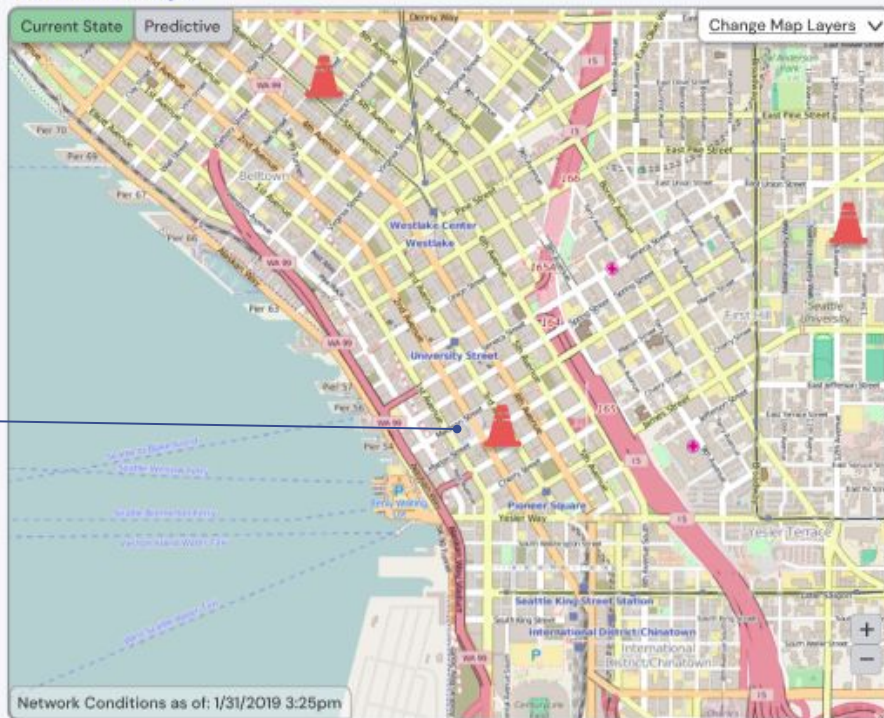
Resources

Collaboration Spaces

External Systems



## Network Map



## Map Item Summary

A213 - Incident at I-5 SB, Exit 165B

Source Not Verified



Crime Scene



HazMat



Fire



Fatality



Rollover



Comm. Vehicle



Other

Truck rollover blocking Union East

Source: 911 call (unverified)

Location: I-5 SB, Exit 166B

Incident Type: Collision

Vehicles Involved: 2  
(two passenger cars, one commercial truck)

Elapsed Time: 00:05:46

Lanes Open: 5/6 (3 min. ago)



Congestion Engine Predicted Time to Clear Incident: 2h

CAD Logs

CM Plans

PopMo Comms.

Join Collaboration Space

## Incident Alerts

A213 - Incident

## Congestion Alerts

A211 - Travel Time Delay

A212 - Abnormal Traffic Flow

A213 - Travel Time Delay

A214 - Travel Time Delay

The resource layer with no hovers just shows the cones denoting the use of a resource



## 3:25PM - Situation Map

Virtual Coordination Center

Taylor Martell

Situation Map

CAD Logs

CM Plans

PopMo Communications

Resources

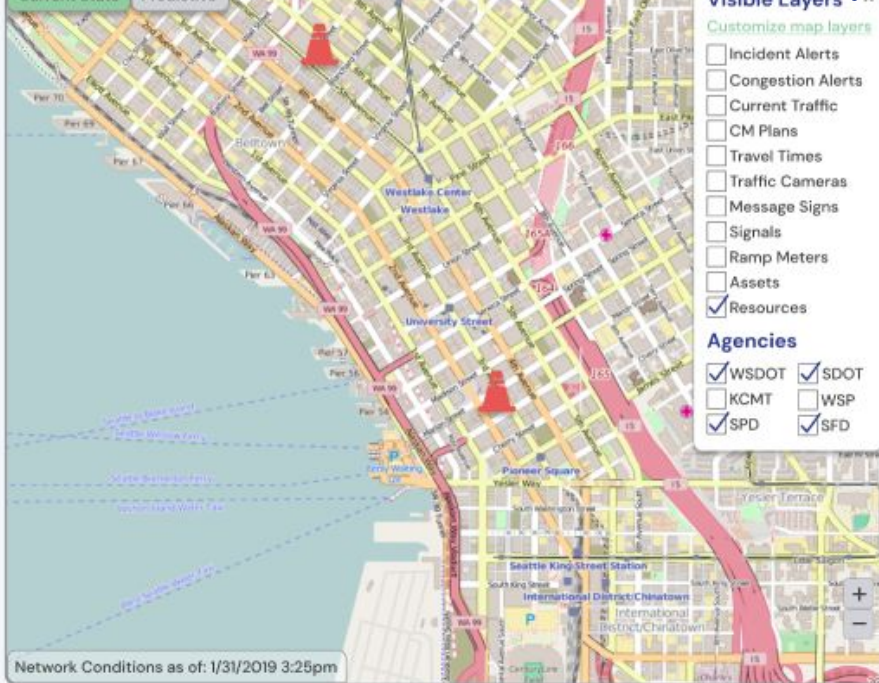
Collaboration Spaces

External Systems

### Network Map

Current State

Predictive



The resources layer can be selected along with any of the other present layers in the VCC wireframes

### Map Item Summary

A213 - Incident at I-5 SB, Exit 165B

Source Not Verified



Crime Scene



HazMat



Fire



Fatality



Rollover



Comm. Vehicle



Other

Truck rollover blocking Union East

Source: 911 call (unverified)

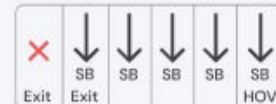
Location: I-5 SB, Exit 166B

Incident Type: Collision

Vehicles Involved: 2  
(two passenger cars, one commercial truck)

Elapsed Time: 00:05:46

Lanes Open: 5/6 (3 min. ago)



Congestion Engine Predicted Time to Clear Incident: 2h

CAD Logs

CM Plans

PopMo Comms.

Join Collaboration Space

### Incident Alerts

A213 - Incident

### Congestion Alerts

A211 - Travel Time Delay

A212 - Abnormal Traffic Flow

A213 - Travel Time Delay

A214 - Travel Time Delay

3:25PM - Situation Map

Virtual Coordination Center

Taylor Martelli

Situation Map

CAD Logs

CM Plans

PopMo Communications

Resources

Collaboration Spaces

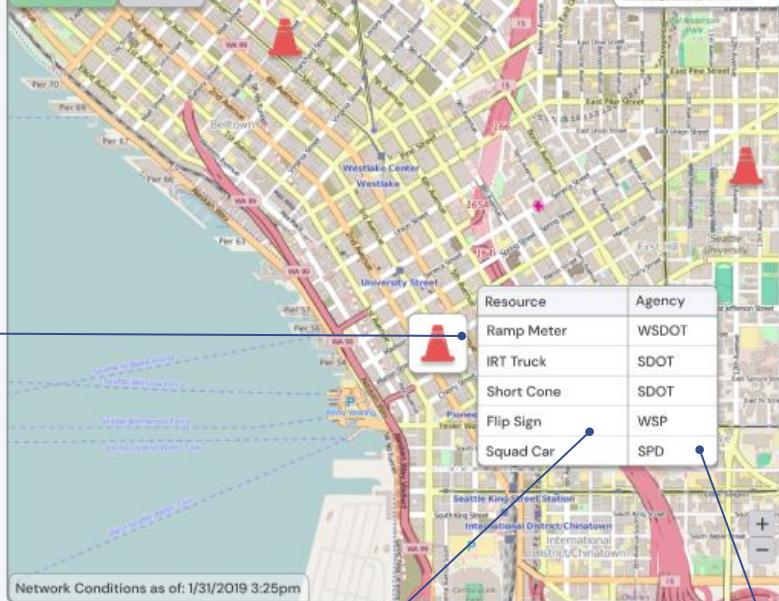
External Systems



## Network Map

Current State Predictive

Change Map Layers



Information is populated from the "fulfilled" section in the resources tab - action center.

"Change Map Layers" is where the resources layer can be turned on

## Map Item Summary

A213 - Incident at I-5 SB, Exit 165B

Source Not Verified

Crime Scene HazMat Fire Fatality Rollover Comm. Vehicle Other

Truck rollover blocking Union East

Source: 911 call (unverified)

Location: I-5 SB, Exit 166B

Incident Type: Collision

Vehicles Involved: 2

(two passenger cars, one commercial truck)

Elapsed Time: 00:05:46

Lanes Open: 5/6 (3 min. ago)



Congestion Engine Predicted Time to Clear Incident: 2h

CAD Logs

CM Plans

PopMo Comms.

Join Collaboration Space

## Incident Alerts

A213 - Incident

## Congestion Alerts

A211 - Travel Time Delay

A212 - Abnormal Traffic Flow

A213 - Travel Time Delay

A214 - Travel Time Delay

Situation Map is mostly the same as other VCC wireframes. The resources layer is just an optional added element, not the focal point.

Table lists resources that are currently at the scene and the agency they belong to

# Collaboration Spaces

3:25PM - Collaboration Space

Virtual Coordination Center Taylor Martell

Situation Map CAD Logs CM Plans PopMo Communications Resources Collaboration Spaces External Systems

Incident: A213 Channel: POCs Search in chat

**Requests notifications:**

- 3:48 PM *New*  
WSP requested a medical examiner **Fulfill**
- 3:32 PM *Previous*  
SPD requested an IRT truck **Fulfill**
- 3:28 PM  
WSDOT requested a patrol car **Confirm**
- 3:26 PM  
WSP requested a VMS **Fulfilled**

**Collaboration Chat** Leave Channel

3:25 PM WSDOT  
Multi-car collision Southbound exit 166b  
Cameras report traffic backing up quickly

3:26 PM WSP  
We're on scene

3:29 PM WSDOT  
We will program the static VMS sign on before exit 167

3:34 PM SDOT  
Alex joined the space for SDOT  
Sending an IRT truck

3:56 PM SPD  
Detectives sent to the scene

3:56 PM WSP  
We have reports of a secondary collision 2 miles south

**You**  
WSDOT  
Casey White

**People**  
SPD  
Morgan Smith

SDOT  
Alex Wang

WSP  
Jesse Chang

**Send**

## Overall workflow

1. Users receives notifications of resource requests from the resources action center.
2. Users have the ability to fulfill the request by clicking the “Fulfill” button.
3. Users confirm their action by clicking “Confirm”.
4. The notification grays out and changes to indicate that the request has been accepted.

Users can switch between active incidents and channels within each incident

The notification panel displays notifications of resource requests from the resources action center

Notifications that occurred after the last time the user was in the collaboration space for the incident occurs under "new"

Upon clicking "Fulfill", the button changes to "Confirm". The user must click again to fulfill the request

Users can search keywords, phrases, agencies, or people in the chat

The collaboration chat allows decision makers from multiple agencies to communicate with each other. Messages are displayed chronologically

Button for users to join or leave the channel

Column that displays the people and their respective agency in the collaboration space for this channel within this incident. Each person is clickable

Visual indicator that the user can scroll to see more people. Also acts as a button that users can click on if they want to navigate one by one

3:25PM - Collaboration Space

Virtual Coordination Center

Situation Map CAD Logs CM Plans PopMo Communications Resources Collaboration Spaces External Systems

Incident: A213

Channel: POCs

Search in chat

Requests notifications:

3:48 PM **New**  
WSP requested a medical examiner  
Fulfill

3:32 PM *Previous*  
SPD requested an IRT truck  
Fulfill

3:28 PM  
WSDOT requested a patrol car  
Confirm

3:26 PM  
WSP requested a VMS  
Fulfilled

Collaboration Chat

3:25 PM WSDOT  
Multi-car collision Southbound exit 166b  
Cameras report traffic backing up quickly

3:26 PM WSP  
We're on scene

3:29 PM WSDOT  
We will program the static VMS sign on before exit 167

3:34 PM SDOT  
Alex joined the space for SDOT  
Sending an IRT truck

3:56 PM SPD  
Detectives sent to the scene

3:56 PM WSP  
We have reports of a secondary collision 2 miles south

Leave Channel

You  
WSDOT  
Casey White

People  
SPD  
Morgan Smith

SDOT  
Alex Wang

WSP  
Jesse Chang

Send

Fulfilled/accepted request display in light grey

On a fulfill/accept, the button changes to "Fulfilled" and can no longer be clicked

Chatbox to send messages to the collaboration chat

3:25PM - Collaboration Space

Virtual Coordination Center

Taylor Martell

Situation Map CAD Logs CM Plans PopMo Communications Resources Collaboration Spaces External Systems

Incident: A213

Channel: POCs

Search in chat

Requests notifications:

3:48 PM *New*  
WSP requested a medical examiner  
**Fulfill**

3:32 PM *Previous*  
SPD requested an IRT truck  
**Fulfill**

3:28 PM  
WSDOT requested a patrol car  
**Confirm**

3:26 PM  
WSP requested a VMS  
**Fulfilled**

### Collaboration Chat

3:25 PM WSDOT  
Multi-car collision Southbound exit 166b  
Cameras report traffic backing up quickly

3:26 PM WSDOT  
WSDOT Casey White

3:29 PM WSDOT

3:34 PM SPD  
AI

3:56 PM SPD  
Detectives sent to the scene

3:56 PM WSP  
We have reports of a secondary collision 2 miles south

Leave Channel

You  
WSDOT  
Casey White

People  
SPD  
Morgan Smith

SDOT  
Alex Wang

WSP  
Jesse Chang

Send

WSDOT Casey White

Contact: \_\_\_\_\_

Notes: \_\_\_\_\_

Edit note

The pop up can be closed by clicking the "x" button, or clicking the user's icon/square

Upon clicking your icon/square, a pop up displays, showing contact information and any notes

Users have the ability to add or edit note. Notes are unique to incidents, while contact information is consistent with user's profile



Users can request a video call with another user

The pop up can be closed by clicking the "x" button, or clicking the user's icon/square

3:25PM - Collaboration Space

Virtual Coordination Center

Taylor Martell

Situation Map

CAD Logs

CM Plans

PopMo Communications

Resources

Collaboration Spaces

External Systems



Incident: A213

Channel: POCs

Search in chat

Requests notifications:

3:48 PM  
WSP requested a medical examiner

Fulfill

3:32 PM  
SPD requested an IRT truck

Fulfill

3:28 PM  
WSDOT requested a patrol car

Confirm

3:26 PM  
WSP requested a VMS

Fulfilled

## Collaboration Chat

Leave Channel

3:25 PM  
WSDOT  
Multi-car collision Southbound exit 166b  
Cameras report traffic backing up quickly

3:26 PM  
WSDOT  
WSDOT  
3:29 PM  
WSDOT  
3:34 PM  
SPD  
AL  
Se  
3:56 PM  
SPD  
Detectives sent to the scene  
3:56 PM  
WSP  
We have reports of a secondary collision 2 miles south



SPD  
Morgan Smith

Request video call

Contact:   
Notes:

You

WSDOT  
Casey White

People

SPD  
Morgan Smith

SDOT  
Alex Wang

WSP  
Jesse Chang

Send

Upon clicking another user's icon/square, a pop up displays, showing contact information and any notes

# Resources Tab - Action Center

3:25PM - Resources - Action Center

Virtual Coordination Center Taylor Martell

Situation Map CAD Logs CM Plans PopMo Communications **Resources** Collaboration Spaces External Systems

Incident: A213

**Action Center**

Action Center Database

**Add Requests**

**Add Resources**

Search resource here

- Class A Tow Truck
- IRT Truck
- Medical Examiner

**Common Resources**

- IRT Truck
- Class A Tow Truck
- Flip Sign

**Active Requests**

WSDOT (You)

- Ramp Meter
- Flip Sign

Others

- Flagger Station Light
- AMR Truck
- PPE

**Fulfilling**

WSDOT (You)

- Fire Extinguisher
- Variable Message Sign
- Resource Name

SDOT

- Flagger

SPD

- Squad Car
- Hand Radio

WSP

- Squad Car

## Overall workflow

1. User searches for resources under 'add resources.'
2. User moves resources from 'Add Resources' and 'Common Resources' to 'Active Requests'. This action sends out a resource request notification in the collaboration center.
3. When this request has been fulfilled, the resource will be moved from 'Active Requests' to the fulfilling agency's list

Tabs to switch between resource action center and resource database

Pressing **X** on a card removes it from the list

List of commonly used resources can be accessed quickly

User searches for desired resources, then selects all and moves them to 'active requests'

Button to move resources between columns

Active Requests column shows requested resources by user and by others in incident collaboration space. Adding a resource to

Active Requests sends out a resource request notification in collaboration center.

Fulfilling column has a list for each agency in the incident collaboration space. User can only move resources between active requests and their own agency's list. Resources are automatically moved to the appropriate agency's box when they are claimed in the collaboration space

3:25PM - Resources - Action Center

Virtual Coordination Center

Taylor Martell

Situation Map CAD Logs CM Plans PopMo Communications Resources Collaboration Spaces External Systems

Incident: A213

Action Center

Database

Action Center

Add Requests

Add Resources

Search resource here

Class A Tow Truck

IRT Truck

Medical Examiner

Common Resources

IRT Truck

Class A Tow Truck

Flip Sign

Active Requests

WSDOT (You)

Ramp Meter

Flip Sign

Others

Flagger Station Light

AMR Truck

PPE

Fulfilling

WSDOT (You)

Fire Extinguisher

Variable Message Sign

Resource Name

SDOT

Flagger

SPD

Squad Car

Hand Radio

WSP

Squad Car

Scroll button to see lists from other agencies in the collaboration space

When arrow is clicked, the button changes to read 'confirm.' User must click again to confirm moving the resource to 'Active Requests'

3:25PM - Resources - Action Center

Virtual Coordination Center Taylor Martell

Situation Map CAD Logs CM Plans PopMo Communications Resources Collaboration Spaces External Systems

Incident: A213

Action Center

Database

### Action Center

#### Add Requests

Add Resources

Search resource here

- Class A Tow Truck
- IRT Truck
- Medical Examiner

#### Common Resources

- IRT Truck
- Class A Tow Truck
- Flip Sign

#### Active Requests

WSDOT (You)

- Ramp Meter
- Flip Sign

Others

- Flagger Station Light
- AMR Truck
- PPE

#### Fulfilling

WSDOT (You)

- Fire Extinguisher
- Variable Message Sign
- Resource Name

SDOT

- Flagger

SPD

- Squad Car
- Hand Radio

WSP

- Squad Car

Confirm?



3:25PM - Resources - Action Center

Virtual Coordination Center

Taylor Martell

Situation Map CAD Logs CM Plans PopMo Communications Resources Collaboration Spaces External Systems

Incident: A213

Action Center

Database

### Action Center

#### Add Requests

Add Resources

Search resource here

- Class A Tow Truck
- IRT Truck
- Medical Examiner

#### Common Resources

- IRT Truck
- Class A Tow Truck
- Flip Sign

#### Active Requests

WSDOT (You)

- Ramp Meter
- Flip Sign

Others

- Flagger Station Light
- AMR Truck
- PPE

#### Fulfilling

WSDOT (You)

Return to Active Requests? Yes Cancel

Variable Message Sign

Resource Name

SDOT

Flagger

SPD

Squad Car

Hand Radio

WSP

Squad Car

When user presses (X) on a card in their agency's list, they must manually confirm that they cannot fulfill this resource. If they click yes, it's moved back to 'Active Requests'

# Resources Tab - Database

3:25PM - Resources - Database

Virtual Coordination Center Taylor Martell

Situation Map CAD Logs CM Plans PopMo Communications Resources Collaboration Spaces External Systems

Incident: A213

Action Center

Database

**Database**

Search text here + Add / update entries

Filter (Agency) Filter (Category)

☒ SPD ☒ SDOT ☒ WSDOT ☐ SoundTransit  
☐ SFD ☐ KC Metro ☒ WSP ☒ Private

☒ Vehicle ☒ Signage ☐ Personnel  
☒ Signaling ☒ Electronic ☒ Bulk Tool

☐ Hide items currently in use

Resource	Agency	Count	In Use	Category
Ramp Meter	WSDOT	12	----	Signaling
IRT Truck	SDOT	05	A213	Vehicle
Squad Car	SPD	173	----	Vehicle
Hand Radio	SPD	125	----	Electronic
Flip Sign	SDOT	12	----	Signage
Class A Tow Truck	Lincoln Towing	5	----	Vehicle
Short Cone	WSDOT	----	A213	Bulk Tool
Flagger Station Light	WSP	15	----	Signaling

## Overall workflow

1. Users can search for a specific resource, filter the database according to their chosen criteria, and scroll through the database to see the resources that match their query.
2. Users can update their agency's resources by clicking "Add / update entries." This button prompts them to upload the CSV file of their agency's resource list in order to update the database with their most current list.

3:25PM - Resources - Database

Count will display as "----" if the count is uncertain or if resources are in the Bulk Item category and are difficult to count (i.e. cones)

Clicking on the arrows for a particular column will display results according to the column descriptor. Users can then change whether they want to sort results in ascending or descending order.

Virtual Coordination Center

Taylor Martell

Situation Map CAD Logs CM Plans PopMo Communications Resources Collaboration Spaces External Systems

Incident: A213

Action Center

Database

Search text here

+ Add / update entries

Filter (Agency)

☒ SPD ☒ SDOT ☒ WSDOT ☐ SoundTransit  
☐ SFD ☐ KC Metro ☒ WSP ☒ Private

Filter (Category)

☒ Vehicle ☒ Signage ☐ Personnel  
☒ Signaling ☒ Electronic ☒ Bulk Tool

☐ Hide items currently in use

Resource	Agency	Count	In Use	Category
Ramp Meter	WSDOT	12	----	Signaling
IRT Truck	SDOT	05	A213	Vehicle
Squad Car	SPD	173	----	Vehicle
Hand Radio	SPD	125	----	Electronic
Flip Sign	SDOT	12	----	Signage
Class A Tow Truck	Lincoln Towing	5	----	Vehicle
Short Cone	WSDOT	----	A213	Bulk Tool
Flagger Station Light	WSP	15	----	Signaling

Column pulls data from Action Center-- if resource is active in an incident this is automatically updated

3:25PM - Resources - Database

Users can click on the box or name for the agencies or categories they are interested in to filter the database results

If user types in a search query, the database table will only show entries that match that query or keywords

Popup appears if this button is clicked

Virtual Coordination Center

Taylor Martell

Situation Map CAD Logs CM Plans PopMo Communications Resources Collaboration Spaces External Systems

Incident: A213

Action Center

Database

### Database

Search text here

+ Add / update entries

Filter (Agency)

☒ SPD ☒ SDOT ☒ WSDOT ☐ SoundTransit  
☐ SFD ☐ KC Metro ☒ WSP ☒ Private

Filter (Category)

☒ Vehicle ☒ Signage ☐ Personnel  
☒ Signaling ☒ Electronic ☒ Bulk Tool

☐ Hide items currently in use

Resource	Agency	Count	In Use	Category
Ramp Meter	WSDOT	12	----	Signaling
IRT Truck	SDOT	05	A213	Vehicle
Squad Car	SPD	173	----	Vehicle
Hand Radio	SPD	125	----	Electronic
Flip Sign	SDOT	12	----	Signage
Class A Tow Truck	Lincoln Towing	5	----	Vehicle
Short Cone	WSDOT	----	A213	Bulk Tool
Flagger Station Light	WSP	15	----	Signaling

Radio button allows users to toggle between seeing or hiding resources that are currently involved in an incident



3:25PM - Resources - Database

Once user uploads a file, the file name will display in the text field that currently reads "no file uploaded"

Virtual Coordination Center

Situation Map CAD Logs CM Plans PopMo Communications Resources Collaboration Spaces External Systems

Incident: ADD

Database

Search Text Field

Filter (Agency)

☒ SPD ☒ SOOT ☐ SPD ☐ KC Metro

Resource

Range Meter			
WT Truck			
Squad Car			
Hand Radio			
Flu Sign	SOOT	12	
Class A Tow Truck	Lincoln Towing	5	
Shunt Cone	WISDOT		ADD
Flagger Station Light	SPD	15	

Category

Signaling
Vehicle
Vehicle
Electronic
Signage
Vehicle
Bulk Tool
Signaling

Add / Update Database Entries

Upload the latest .csv version of your agency's resource inventory to add, edit, or remove resources from the database.

Upload CSV File

Select file no file uploaded

Update database

3:25PM - Resources - Database

The screenshot shows the 'Virtual Coordination Center' interface. The top navigation bar includes tabs for 'Situation Map', 'CAD Logs', 'CM Plans', 'PopMo Communications', 'Resources', 'Collaboration Spaces', and 'External Systems'. The 'Resources' tab is active, and the 'Database' sub-tab is selected. A modal window titled 'Add / Update Database Entries' is open in the center. The modal contains a green checkmark icon and the text 'Database Updated'. Below this, a 'Summary of changes:' section lists the following data:

Summary of changes:	Count	Description
	43	duplicate rows skipped
	4	new rows added
	0	original rows deleted
	0	original rows updated

At the bottom of the modal is a 'Done' button. The background interface shows a search bar, filter options (e.g., 'Filter (Agency)', 'SPD', 'SOOT'), and a table of resources with columns for 'Resource', 'Agency', 'Count', and 'Action'.

After update loads, success message is displayed along with a summary of what changes were made to the database.

This feature helps increase system transparency and raise the user's awareness so they can realize if they forgot something or if they may have uploaded the wrong file.