

# PLATINA

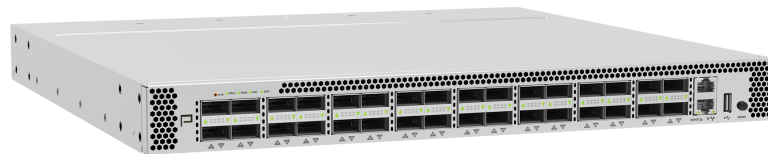
## Platina Systems Cluster Management Proof-of-Concept Kit

---

Platina's goal is effortless deployment and management of clusters. A Proof-of-Concept (PoC) is a critical tool to mitigate risks by allowing you to verify this solution works for your environment. Any PoC requires an investment of time and resources, both of which are likely to be challenging to allocate. Furthermore, the unplanned or unexpected creates further delays that must be overcome. As a result, Platina has created a turnkey PoC kit with services offerings to ensure that valuable time and resources are spent validating your use cases and ensuring your solution needs are met.

To simplify planning and procurement, the PoC Kit includes all the hardware and software necessary to build a functional cluster, including cluster management and remote access. The kit includes a pair of Platina PS-3000 appliances and trial licenses for all Platina management features; it also includes 3 workload servers, a management server to host the Platina management software, a management switch,

### Platina PS-3001-32C



console server and cabling to create a complete cluster environment that can attach to your existing IT backbone. If desired, Platina can work with you to preconfigure various elements to be ready for your environment out of the box.

Once the cluster is deployed, the PoC equipment is ready to evaluate any number of cluster features in a variety of permutations, including bare metal management, containerized infrastructure and software defined storage.

In addition to the hardware and software elements to build the cluster, Platina also offers on-site and remote PoC services offerings.

### What's in the Kit

- ✓ 2 Platina PS-3001-32C Cluster Heads with trial SW subscription
- ✓ 3 Workload servers (Dual Processor Xeon, 64GB RAM, 480GB SSD, 3TB HDD)\*
- ✓ 1 management server (Dual Processor Xeon, 64GB RAM, 480GB SSD, 3TB HDD)\*
- ✓ 1 Management switch (GbE switch)
- ✓ 1 Console server
- ✓ Cables between PS-3001-32C nodes (100Gbps DAC)
- ✓ Cables between servers and PS-3001-32C (25Gbps DAC)
- ✓ Cables between servers and management switch (RJ-45)
- ✓ Cables between servers and console server
- ✓ Platina Command Center (PCC) Base License
- ✓ All PCC feature licenses (trial license)
- ✓ Remote support

*\*Subject to change*

