

THE HUDSON

319 FAYETTEVILLE STREET

FOR LEASE

OFFICE SPACE

DOWNTOWN RALEIGH



SUITE 105: 5,521 RSF

- Ground level retail space on Fayetteville Street with high visibility
- Second generation restaurant with a large prep-kitchen
- Downtown location, steps away from all of Raleigh's urban amenities

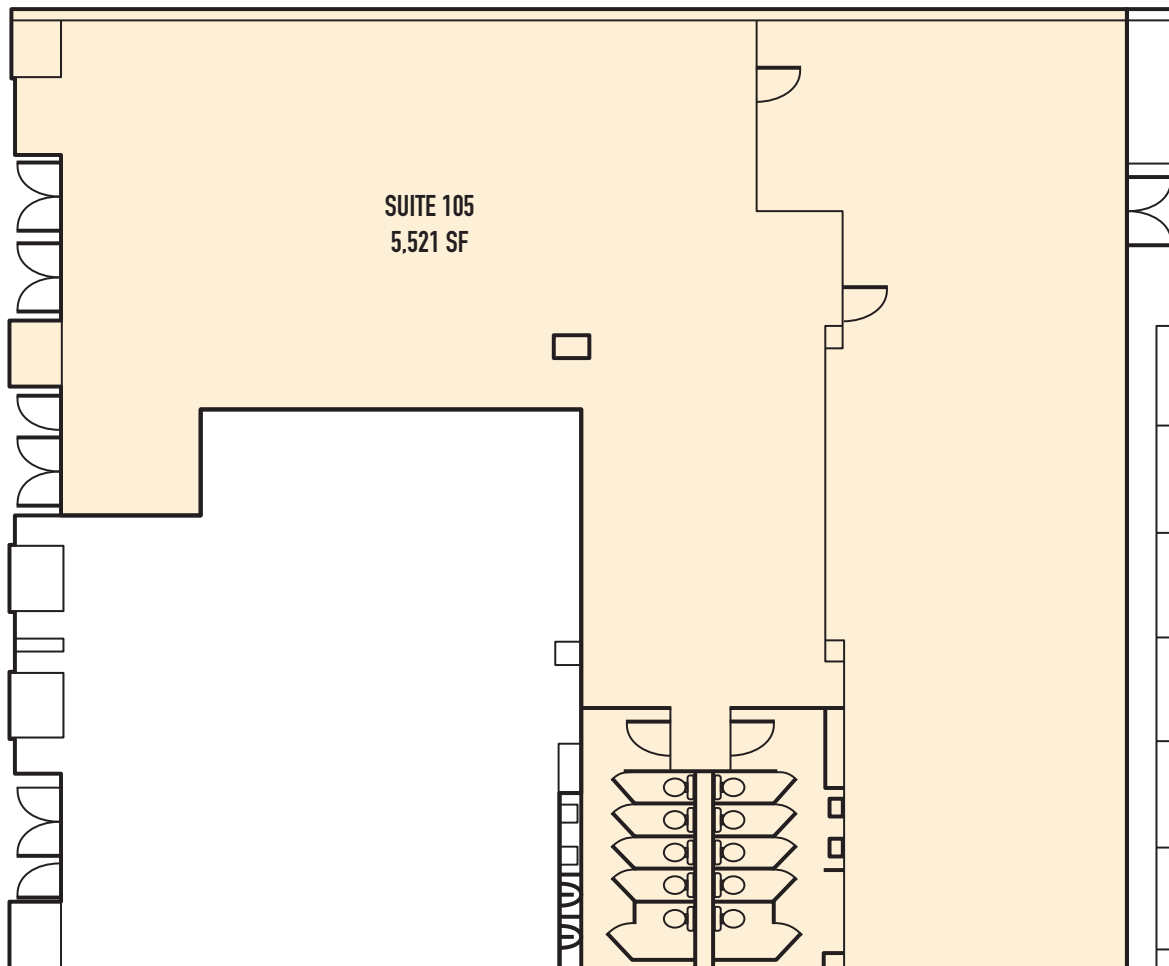
FOR LEASING AND AVAILABILITY

commercial@empire1792.com | 919-834-8350
Empire Brokerage Services, Inc.



OFFICE SPACE

DOWNTOWN RALEIGH



FOR LEASING AND AVAILABILITY

commercial@empire1792.com | 919-834-8350
Empire Brokerage Services, Inc.



OFFICE SPACE

DOWNTOWN RALEIGH



FOR LEASING AND AVAILABILITY

commercial@empire1792.com | 919-834-8350
Empire Brokerage Services, Inc.



OFFICE SPACE

DOWNTOWN RALEIGH



FOR LEASING AND AVAILABILITY

commercial@empire1792.com | 919-834-8350
Empire Brokerage Services, Inc.



OFFICE SPACE

DOWNTOWN RALEIGH



FOR LEASING AND AVAILABILITY

commercial@empire1792.com | 919-834-8350
Empire Brokerage Services, Inc.



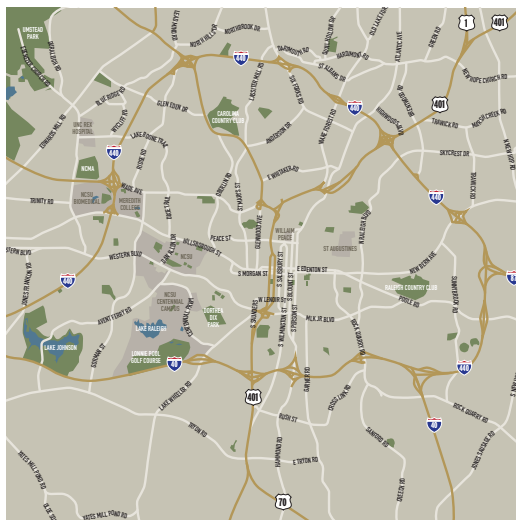
OFFICE SPACE

DOWNTOWN RALEIGH



LOCATION

- In the heart of Raleigh's Fayetteville District, in close proximity to Nash Square, Moore Square, and City Plaza
- In close proximity to deck and surface parking
- Steps away from restaurant, retail, and entertainment amenities



FOR LEASING AND AVAILABILITY

commercial@empire1792.com | 919-834-8350
Empire Brokerage Services, Inc.

