

SCALE

PRÉSENTS

SCALITE®



PRODUCT PRESENTATION

2022

WHAT IS SCALITE® ?

SCALITE® is the first material ever made with 100% fishscales a by-product of the fishing industry. It is a non deleterious, bio-degradable ocean friendly material destined to interior and furniture applications.

ADVANTAGES

BIO-SOURCED
BIODEGRADABLE
100% RECYCLABLE
ECOFRIENDLY

0 FORMALDEHYDE
0 VOC (BREAM - LEED)
MINIMAL JOINT
TIMBER TOOS

NON FLAMMABLE
LARGE COLOR RANGE

DIMENSIONS

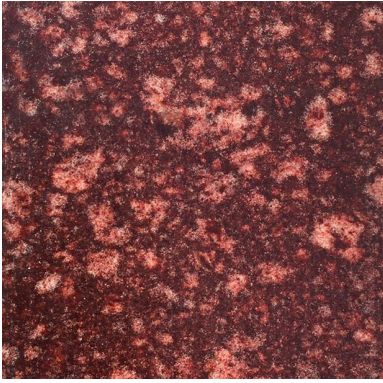
SCALITE® is available in sheet of 550x550*12mm.
Other dimensions can be made on demand.

TECHNICAL DATA

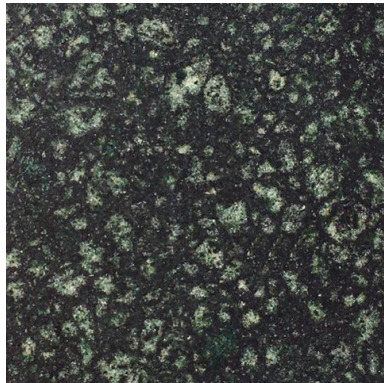
properties	SCALITE	
	Valeurs	Normes
Density (g/cm³)	1,3	
Resistance in flexion (Mpa)	31,3	ISO 178
Module of elasticity in flexion (Mpa)	4687	
Resistance to tension (Mpa)	15,5	
Young's modulus in tension (Mpa)	3775	ISO 527-24
Elongation max (%)	0,95	
Resistance to compression (Mpa)	>140	ISO 604
Hardness (Mohs)	3	NF EN 16771
Fire resistance	B,S2,D0 (M1)	NF EN 11925-2
Ecotoxicity in marine environment	Pass	ISO 14669, NF EN ISO 10253, NF EN ISO 19679
Biodegradability in marine environment	Pass	NF EN ISO 19679

COLOURS

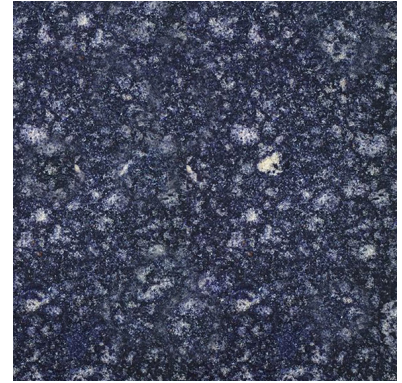
SCALITE® can be coloured all the way through. A collection of six standard colours have been developed. Dyes have been carefully selected to match our environmental engagement. SCALITE® possess a distinctive random pattern not dissimilar to certain natural stones.



Vert de Men Ruz



Vert de Cancale



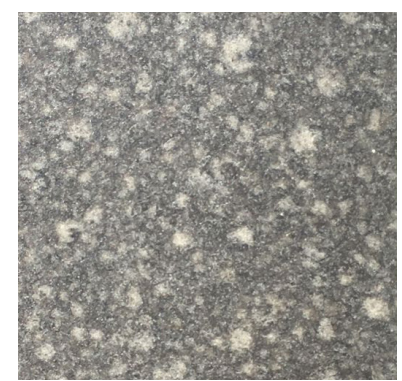
Bleu de Sormiou



Blanc de la Madrague

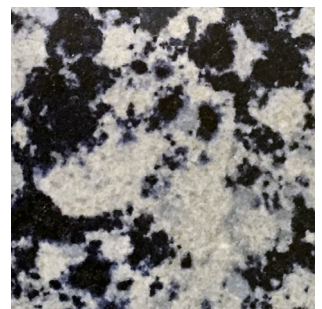
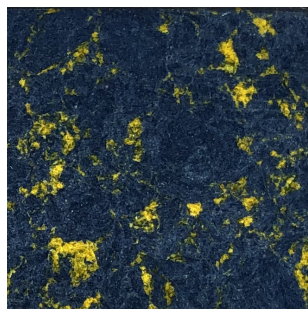
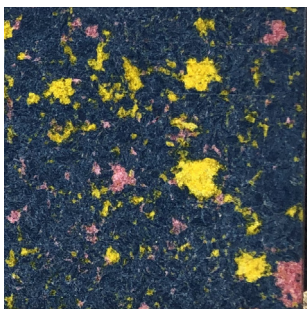


Gris d'Ouessan



Gris d'Antifer

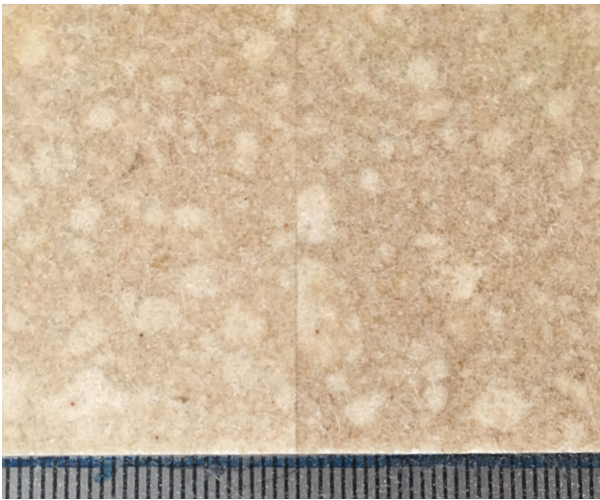
Colours can be mixed and made to measure.
The pattern can be modified to some extent.



WORKABILITY

SCALITE® can be transformed with conventional timber tools such as circular saws, band saws, drills, spindles, CNC machining, sanding etc. Jointing with a nearly invisible joint can be achieved with conventional timber adhesive. Screws and inserts can be used with pre-drilling. Process involving liquids, such as water jet cutting or water polishing shouldn't be used. Laser cutting is not appropriate either.

SCALITE® shows translucency in thicknesses under 3mm.



Assembly with invisible joint.



Engraving made translucent.

MAINTENANCE

SCALITE® is a natural material which requires a light maintenance. It should be done using a wet cloth or sponge - avoid any abrasive or aggressive detergents.

PRODUCT NAME

SCALITE®

MANUFACTURER

HADDOCK SAS

11 Erreloua, ZI Pignadas
64240, Hasparren (Fr)

SEA@SCALE.VISION

WWW.SCALE.VISION