



## TRIANO L LED High Bay Fitting Series 3403...

### Applications:

Production areas and warehouses, maintenance and assembly shops, cool storage facilities, walkways in rack areas, hardware stores etc.

### Design:

**LED-segment:** Robust four-part cast aluminium housing with cooling fins, LED-modules and flat safety glasses (IK09), versions (B, TB or T) with PC cover with integrated optics.

**ECG-housing:** Extruded aluminium with cooling fins. All case parts powder coated

in DB702N (mica-iron paint, grey).

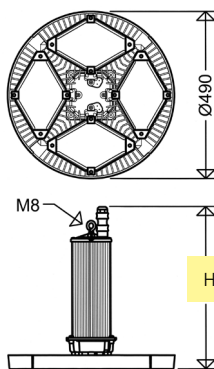
**Light distribution:** Without optics wide beam, with optics wide (B) narrow-wide (TB) or narrow-beam (T).

**Connection:** Preinstalled 3-pole (DIMD 5-pole) plug-type connector (**Fast-Connect**), plug mounted to the housing, socket included.

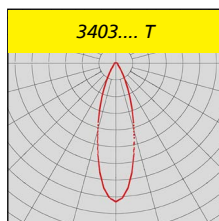
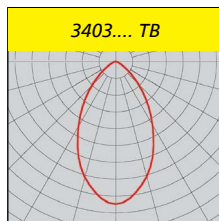
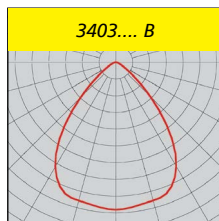
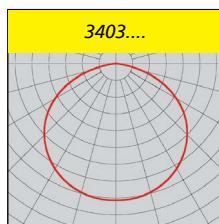
**Mounting:** 1-point suspension, eyelet included.

**Delivery status:**

2 parts: LED-segments and ECG-housing



Series	H [mm]
3403 ...	510
3403 L380.. DIMD	590



### Technical Data:

**LED module:** 5,000K, CRI > 80, lifetime L<sub>80</sub> > 100,000h at 25°C ambient temperature, lifetime L<sub>70</sub> > 70,000h at max. ambient temperature (see notes).

**ECG:** 220-240V, 50-60Hz, Surge voltage resistance 4kV, overload and short circuit protection.

**Note:** Due to the inrush current of the electronic ballasts, the maximum permissible number of light fittings per circuit breaker is limited.

**Ambient temperature:** -20°C up to see article tables

### Options:

On request also available with the following configurations (please mention in your enquiry or order):

#### Output reduction:

**With control phase (LR):** via 230V control input. Control phase (LST) required. Switching via control phase (LST = 230V: 100%; LST = 0V: 50%). Further dimming levels possible.

#### Corridor Mode (DIMC)

#### DALI interface (DIMD)

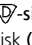
**Constant luminous flux function (CL):** Luminous flux is kept on a constant level over the entire lifetime of the LED-modules.

### Further Options:

– 4.000K, light-colour **840**

– for connection to group or central battery systems (ZB) or emergency mains respectively

– PC cover for application in food industry areas (IFS Food)

– -sign for locations with increased fire risk (D)

– silicone free

– for high ambient temperatures to +70°C (H70)



### Product highlights:

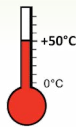
- fast mounting and commissioning due to 1-point suspension and FastConnect quick-connector
- high quality ECG with overload and short circuit protection
- optimized thermal management due to segmentation of the LED modules and direct mounting to the housing. Huge heat sink, excellent heat dissipation, excellent convection
- high system lifetime of up to 100,000h (25°C), >70,000h at maximum ambient temperature
- colour reproduction Ra > 80, according to the workplace guide lines suitable for nearly all plant locations
- uniform illumination due to the „Multi-Layer Technology“ i.e. every individual LED illuminates the whole surface, the light curves of the individual LEDs are overlapping.

### Notes:

Properties, limitations and details for controlling LED-light fittings: See „Technical Supplement“.

All technical data is relevant at the time of print. Actual technical data can be found in the internet under [www.schuch.de](http://www.schuch.de).

Versions with PC-Optics are suitable for use in IFS-applications!



Article no.	Type	Quantity of ECG	Dimmable	Wide beam	Narrow wide beam	Narrow beam	Tmax [°C]	Energy efficiency class	Weight [kg] (without packing material)	Power consumption [W]**	Luminous flux [lm]**	Light output [lm/W]	Substitute for *
-------------	------	-----------------	----------	-----------	------------------	-------------	-----------	-------------------------	--	-------------------------	----------------------	---------------------	------------------

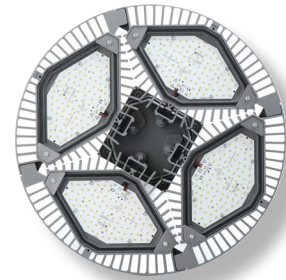
### 3403...



34030 0001	<b>3403 L260</b>	2	•				60	A++	8,9	166	27.000	163	HIT400 HIE400 (HS-VG)
34030 0003	<b>3403 L260B</b>	2	•				60	A++	8,9				
34030 0004	<b>3403 L260TB</b>	2		•			60	A++	8,9				
34030 0008	<b>3403 L260T</b>	2			•		60	A++	8,9				
34030 0200	<b>3403 L260 DIMD</b>	2	•	•			60	A++	8,9				
34030 0202	<b>3403 L260B DIMD</b>	2	•	•			60	A++	8,9				
34030 0203	<b>3403 L260TB DIMD</b>	2	•		•		60	A++	8,9	256	39.500	154	HME700 HPI400
34030 0206	<b>3403 L260T DIMD</b>	2	•		•		60	A++	8,9				
34030 0002	<b>3403 L380</b>	2	•				50	A++	8,9				
34030 0005	<b>3403 L380B</b>	2	•				50	A++	8,9				
34030 0006	<b>3403 L380TB</b>	2		•			50	A++	8,9				
34030 0009	<b>3403 L380T</b>	2			•		50	A++	8,9				
34030 0201	<b>3403 L380 DIMD</b>	2	•	•			50	A++	9,7				
34030 0204	<b>3403 L380B DIMD</b>	2	•	•			50	A++	9,7				
34030 0205	<b>3403 L380TB DIMD</b>	2	•		•		50	A++	9,7				
34030 0207	<b>3403 L380T DIMD</b>	2	•		•		50	A++	9,7				

\* see notes

\*\* The given information is for rough orientation only. In each individual case a lighting calculation is necessary. (VG = ballast)

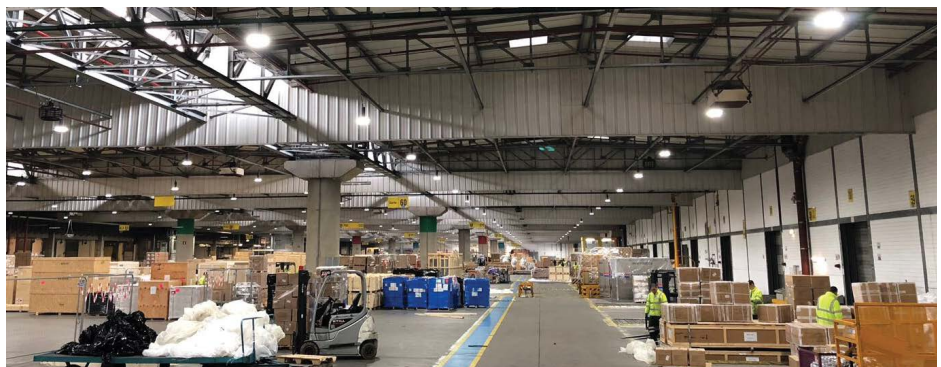


#### Excellent Thermo-Management by unique Design!

Each LED-Segment is completely surrounded by a high efficient cooling fin block.

Such design creates a permanent air flow within the LED-Segments. It cools perfectly and avoids dust sitting on it that could destroy the thermo-management.

**Outcome: Operation in high ambient environment plus long life cycle.**



### Accessories / Spare Parts

Article no.	Type	
34011 9001	<b>3401/010</b>	spare safety glass, for BR 3401/3402... (4 glasses per fitting necessary)
34011 9002	<b>3401/010 IFS</b>	PC cover, for BR 3401/3402... IFS (4 glasses per fitting necessary)
34011 9003	<b>3401/011</b>	spare cover PMMA, prismatic structure for BR 3401/3402 (3 pieces per fitting necessary)
34011 9004	<b>3401/012 B</b>	spare cover PC, wide beam for BR 3401/3402... B 3 (4 glasses per fitting necessary)
34011 9005	<b>3401/012 TB</b>	spare cover PC, narrow-wide beam for BR 3401/3402... TB (4 glasses per fitting necessary)
34011 9006	<b>3401/012 T</b>	spare cover PC, narrow beam for BR 3401/3402... T (4 glasses per fitting necessary)