

LED-Light Fitting for Ex-Zone 1/21 Series e840...



Applications:

Hazardous locations of Zone 1/2 (gas) and 21/22 (dust).

Design:

Housing: Glass fibre reinforced polyester resin.

Cover: Clear polycarbonate with internal prisms, hinged, silicone gasket.

Central locking system: Operated by a hexagonal socket wrench 13mm.

Reflector: Aluminium, carrying the encapsu-

lated LED-modules with frosted covers for glare limitation, hingeable and removable.

Connection: 3 poles up to 4 mm².

Cable entries: 3 entries M25 x 1,5, (2 glands - one of them is plugged), PM-version: 1 x M20 x 1,5..

Standard: Facing downwards or forwards.

Mechanical installation:

Mounting accessories see spare parts/ accessories.

Technical Data:

LED: Line modules appr. 6,500K, CRI > 80,
lifetime $L_{70}B_{10} > 100,000h$
 $L_{80}B_{50} = 100,000h$
at max. ambient temperature

ECG: 220-240V AC/DC, 0 or 50-60Hz, overvoltage, overload and short circuit protection

Options:

- 4.500K, light colour 845
- for connection to group or central battery (light fittings of version ZB only) or emergency mains respectively
- with monitoring module for monitoring the individual light fitting
- Control gear with DALI-interface for

dimming (DIMD)

- with through-wiring 5 x 2,5mm²

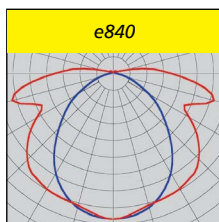
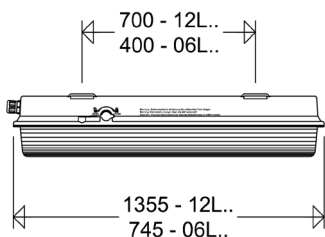
- for higher ambient temperatures up to +65°C depending on version

- with through wiring system



Note:

This light fitting is not suitable for application in areas with permanent high humidity in combination with only short periods of operation, such as sewage or stormwater retention tanks or water treatment plants.

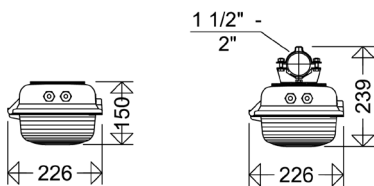


Product highlights:

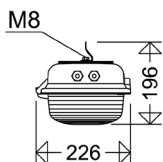
- extremely robust construction of housing and diffuser
- comfortable central locking mechanism for easy maintenance
- innovative encapsulation with high transmission rate
- homogeneous lighting distribution by frosted anti-glare modules-protecting the LEDs as well of ESD and mechanical damage. No individual light points visible, comfortable perception of light, brilliant glare limitation.
- high colour rendering index CRI > 80, according to the workplace guide
- lines suitable for nearly all plant locations
- ECG and reflector with LED-modules replacable by qualified personnel on-site



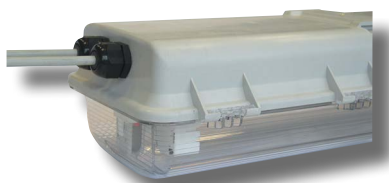
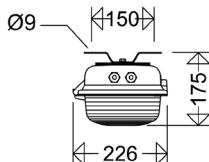
Pipe clamp mounting



Suspension eyes H8V



Ceiling brackets 15A



Looping the cable on one side:

All light fittings of series e840... have got 2 cable entries on one small side of the housing for cable looping instead of the through wiring system.

Notes:

Properties, limitations and details for controlling LED-light fittings: See „Technical Supplement“.

All technical data is relevant at the time of print. Actual technical data can be found in the internet under www.schuch.de.

Article no.	Type	Power consumption [W] *	Luminous flux [lm] *	Luminous efficacy [lm/W]	Ta max [°C]	Energy efficiency class	Substitute for **	Weight [kg] (without packing material)
-------------	------	-------------------------	----------------------	--------------------------	-------------	-------------------------	-------------------	--

e840...



II 2 G Ex eb mb
op is q IIC T4 Gb

II 2 D Ex op is tb
IIIC T80°C Db

IP66



EC-Type Examination Certificate:

IBExU 19 ATEX 1135

Other approvals:

IECEx-Nr. IBE 19.0027

Ignition protection: eb

Marking:

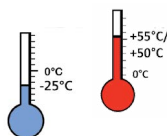
II 2 G Ex eb mb op is q IIC T4 Gb (Zone 1)

II 2 D Ex op is tb IIIC T80°C Db (Zone 21)

Rated voltage: 220-240V AC/DC, 0 or 50-60Hz.

Permissible ambient temperature:

-25°C up to see article table



84005 0011	e840 06L22	16	2.054	128	55	A++	2 x 18W	5,6
84005 0012	e840 06L42	28	4.067	145	55	A++	2 x 36W	5,7
84005 0001	e840 12L42	28	4.230	151	55	A++	2 x 36W	8,0
84005 0002	e840 12L60	40	5.850	146	55	A++	2 x 58W	8,0
84005 0003	e840 12L85	54	8.300	154	50	A++	> 2 x 58W	8,5

* see notes

** The given information is for rough orientation only. In each individual case a lighting calculation is necessary.

Article no.	Type	Power consumption [W] *	Luminous flux [lm] *	Luminous efficacy [lm/W]	Ta max [°C]	Energy efficiency class	Substitute for **	Weight [kg] (without packing material)
-------------	------	-------------------------	----------------------	--------------------------	-------------	-------------------------	-------------------	--

e840... PM



II 2 G Ex eb mb
op is q IIC T4 Gb

II 2 D Ex op is
tb IIIC T80°C Db

IP66



Pole mounted light fitting with integrated mounting system

EC-Type Examination Certificate:

IBExU 19 ATEX 1135

Other approvals:

IECEX-Nr. IBE 19.0027

Ignition protection: eb

Marking:

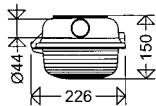
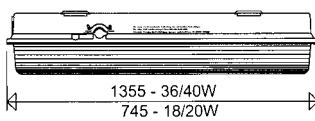
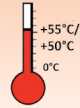
II 2 G Ex eb mb op is q IIC T4 Gb (Zone 1)

II 2 D Ex op is tb IIIC T80°C Db (Zone 21)

Rated voltage: 220-240V AC/DC,
0 or 50-60Hz

Mechanical installation: integrated mounting system 06L: Ø 42 x 150mm (Length)
12L: Ø 42 x 245mm (Length)

Permissible ambient temperature:
-25°C up to see article table



84005 0911	e840 06L22 PM	16	2.054	128	55	A++	2 x 18W	7,9
84005 0912	e840 06L42 PM	28	4.067	145	55	A++	2 x 36W	8,0
84005 0901	e840 12L42 PM	28	4.230	151	55	A++	2 x 36W	8,1
84005 0902	e840 12L60 PM	40	5.850	146	55	A++	2 x 58W	8,1
84005 0903	e840 12L85 PM	54	8.300	154	50	A++	> 2 x 58W	8,7

* see notes

** The given information is for rough orientation only. In each individual case a lighting calculation is necessary.



Explosion protected Light Fittings

Accessories / Spare Parts

Article No.	Type	
Spare diffuser		
84001 9006	8402 SIL	for e840 06L... manufactured until 2018, please see type plate of light fitting: article no. without "G" at the end
84001 9007	8402 SIL G	for e840 06L... manufactured from 2018, please see type plate of light fitting: article no. with "G" at the end
84001 9004	8404 SIL	for e840 12L...
Cable glands/ breather		
90117 9000	2537	ex-protected plastic cable gland M25 x 1,5 with nut
90118 9000	2538	ex-protected plastic plug M25 x 1,5 with nut
90259 9000	Klimastutzen EX	breather M25 x 1,5
Mounting material		
90001 0002	H8V P	2 suspensions eyes with bolts, stainless steel
90000 0002	15A P	2 ceiling brackets, hot galvanized steel
90032 0002	15AV P	2 ceiling brackets, stainless steel
90000 0011	84 AA	1 pair of brackets, stainless steel, for compensating the different mounting distances of types e840 / e152 or e841 / e148
90037 0004	RO84 112 A P	2 pipe clamps 1 1/2", stainless steel, with support
90038 0004	RO84 2 A P	2 pipe clamps 2", stainless steel, with support
26000 0008	W 26/L P	2 wall mounting angles
26000 0002	W 26/30 P	2 wall mounting angles 30°
26000 0003	W 26/45 P	2 wall mounting angles 45°

