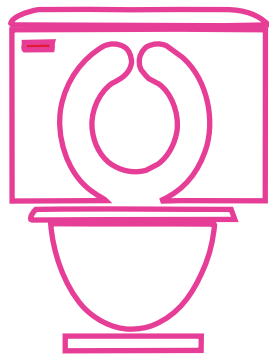


multi-phos



**VISCOUS,
MULTI-PURPOSE
MILD ACID
CLEANER**

Product Properties

COLOR: Red Viscous Liquid
ODOR: Cherry
VISCOSITY: 500 cps
pH: 2.0
SPECIFIC GRAVITY: 1.09
WETTING: Excellent
DETERGENCY: Excellent

Description

This mild acid cleaner is a versatile and effective restroom cleaner. It quickly removes scale, soap scum, rust, and hard water deposits from all restroom surfaces. Its thick clinging formula allows greater contact time on vertical surfaces for greater cleaning efficiency. Does not attack chrome and is safe on plumbing fixtures and other metal surfaces.

Features...Benefits

Thickened FormulaClings to "Scrub" Surfaces
Cherry ScentedPleasant to Use
Multi-Purpose ProductEasy to Use
Removes Soap Scale and ScumImproved Sanitation Perceptions
Safe on Many Restroom SurfacesPreserves Facilities

Directions

TOILET BOWLS: Remove water from bowl by forcing over trap with applicator. Remove excess water from applicator by pressing it against side of bowl. Pour 1 oz. on applicator. Clean entire unit, especially under rim at water outlets. Allow to remain 10 minutes. Flush and rinse out applicator.
URINALS: Pour 1 oz. onto mop and apply directly onto surface. Swab out entire unit thoroughly. Allow to remain 10 minutes. Flush and rinse out applicator.
WASH BASINS, SHOWER STALLS, DRINKING FOUNTAINS AND STAINLESS STEEL, ETC.: Always dilute with 3 parts water. Do not allow solution to remain on fixtures without immediately thoroughly rinsing with water.

Safety Information

KEEP OUT OF REACH OF CHILDREN
DANGER

Contains Phosphoric Acid. Harmful if swallowed. Causes eye damage and skin irritation. Do not get in eyes, on skin, or on clothing. In case of contact with eyes, flush with plenty of water for 15 minutes. Seek prompt medical attention. For skin, wash with soap and water then cover with moist baking soda. Seek medical attention if irritation persists. If swallowed, do not induce vomiting. Drink large quantities of milk or water to dilute material and get immediate medical attention.

1100 Central Industrial Dr.
St. Louis, Missouri, 63110

toll free: 800 325 9218
main: 314 771 6600
fax: 314 771 6608
email: info@interconchemical.com

www.interconchemical.com



130624-0408
© INTERCON 2013

REFER TO PRODUCT LABEL AND MSDS
FOR ADDITIONAL INFORMATION