



NORTH CAMPUS

ADDRESS
6999 - 84th STREET SE
CALGARY, ALBERTA
CANADA



ROCKY
MOUNTAIN
FILM STUDIO

CONTACT
SCOTT EVANS
604.928.5050
scott@rockymountainfilmstudio.com

www.rockymountainfilmstudio.com

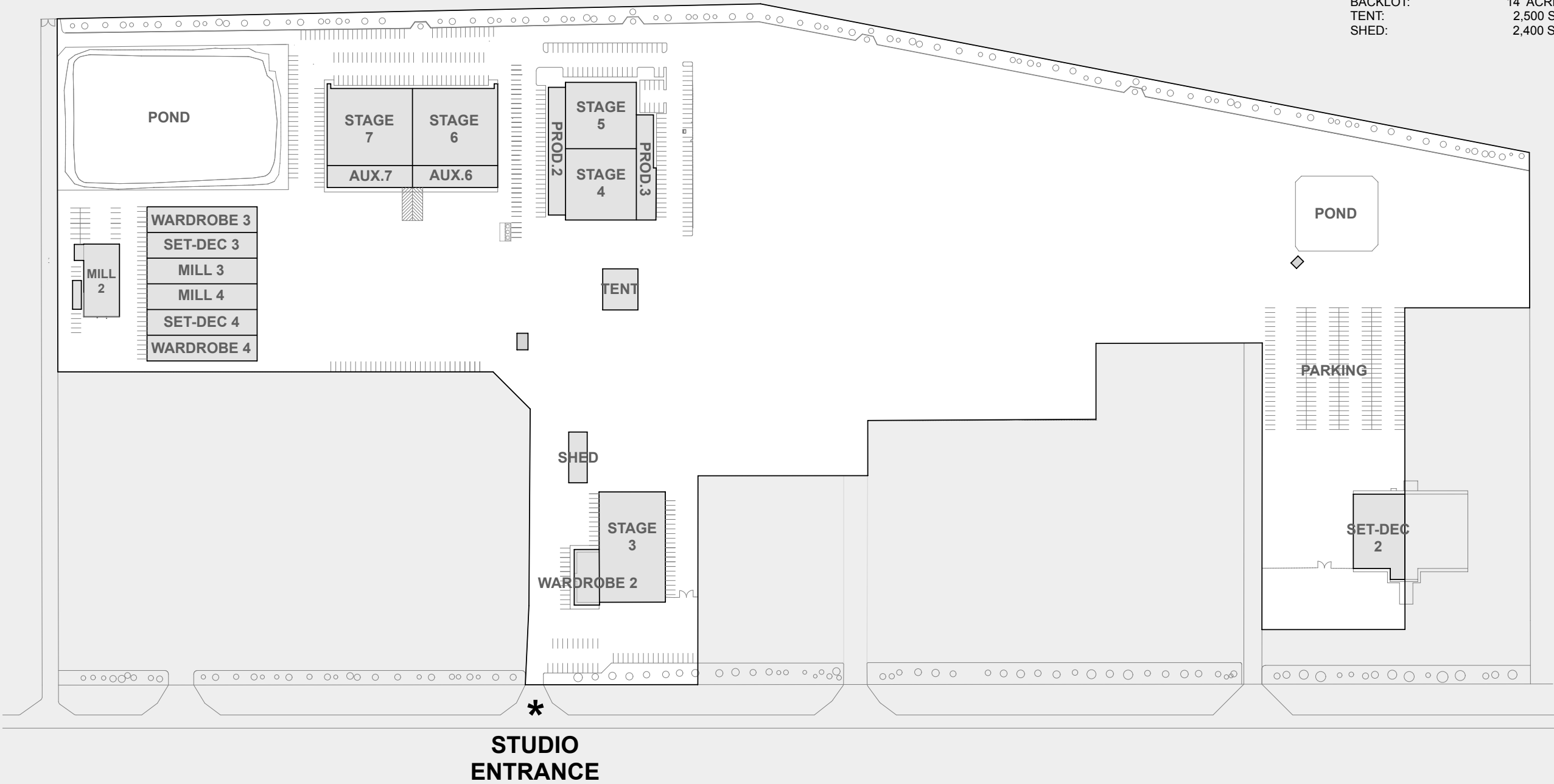


INFORMATION

STAGE 3:	24,000	SF
STAGE 4:	16,000	SF
STAGE 5:	16,000	SF
STAGE 6:	21,000	SF ***
AUXILIARY 6:	11,450	SF ***
STAGE 7:	21,000	SF ***
AUXILIARY 7:	11,450	SF ***
PROD. OFFICE 2:	15,700	SF
PROD. OFFICE 3:	13,500	SF
MILL 2:	10,000	SF
MILL 3:	12,500	SF ***
MILL 4:	12,500	SF ***
SET DEC. 2:	9,250	SF
SET-DEC. 2 OFFICE:	4,500	SF
SET DEC. 3:	9,000	SF ***
SET DEC. 4:	9,000	SF ***
WARDROBE 2:	8,300	SF
WARDROBE 3:	13,600	SF ***
WARDROBE 4:	13,600	SF ***
BACKLOT:	14	ACRES
TENT:	2,500	SF
SHED:	2,400	SF



ROCKY MOUNTAIN
FILM STUDIO



NORTH CAMPUS

ADDRESS

6999 84th STREET SE
CALGARY, ALBERTA
CANADA

OVERVIEW

CONTACT

SCOTT EVANS
604.928.5050
scott@rockymountainfilmstudio.com
rockymountainfilmstudio.com



ROCKY MOUNTAIN
FILM STUDIO

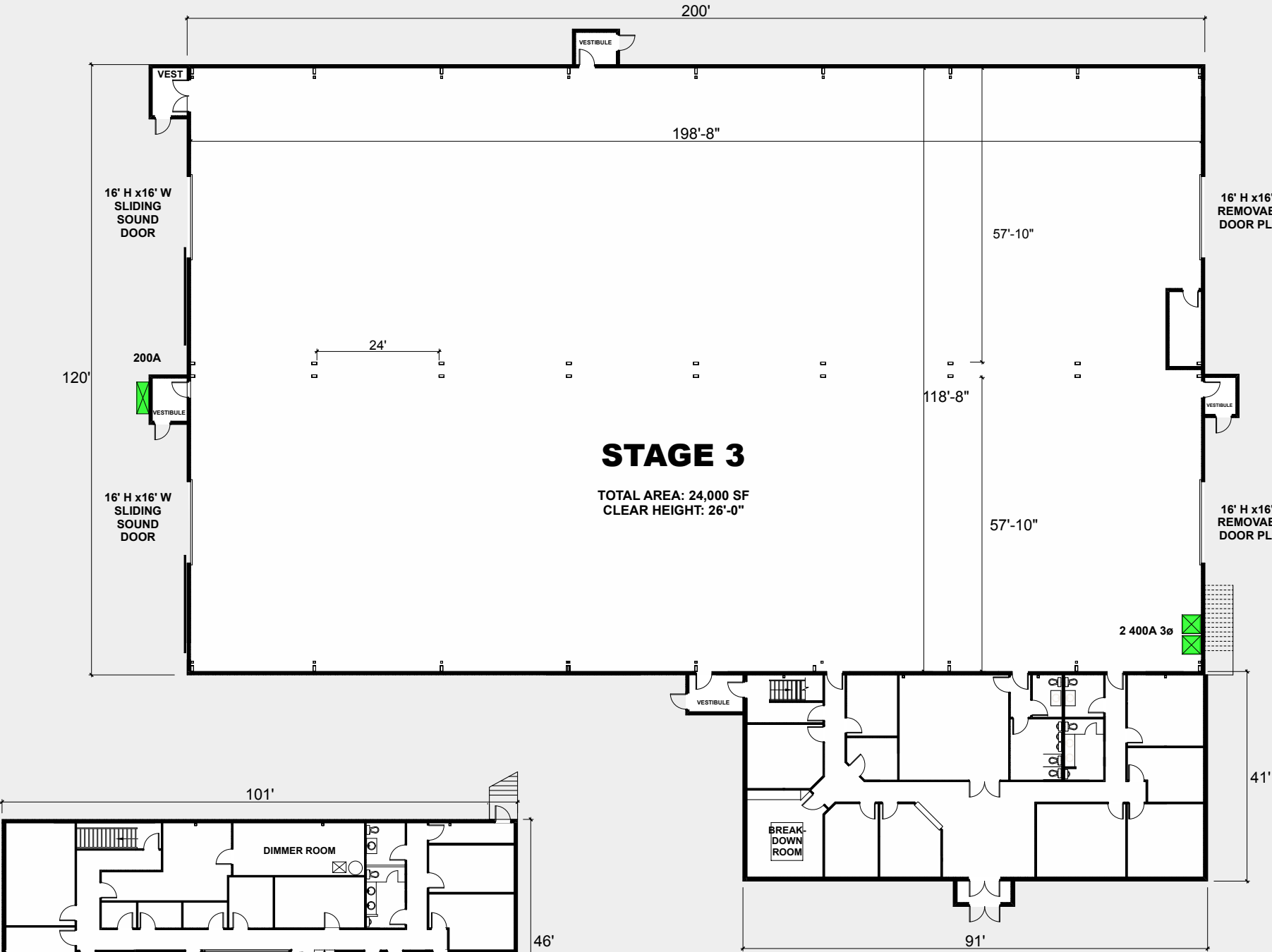
NORTH CAMPUS

ADDRESS
6999 84th STREET SE
CALGARY, ALBERTA
CANADA

STAGE 3 WARDROBE 2

CONTACT
SCOTT EVANS
604.928.5050
scott@rockymountainfilmstudio.com
rockymountainfilmstudio.com

Copyright Rocky Mountain Film Studio 2022
DIMENSIONS ON PLANS MUST BE CONFIRMED ON SITE.



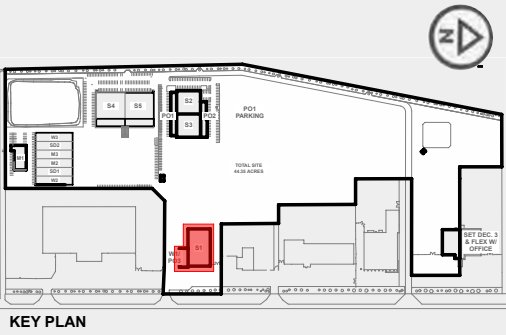
WARDROBE 2

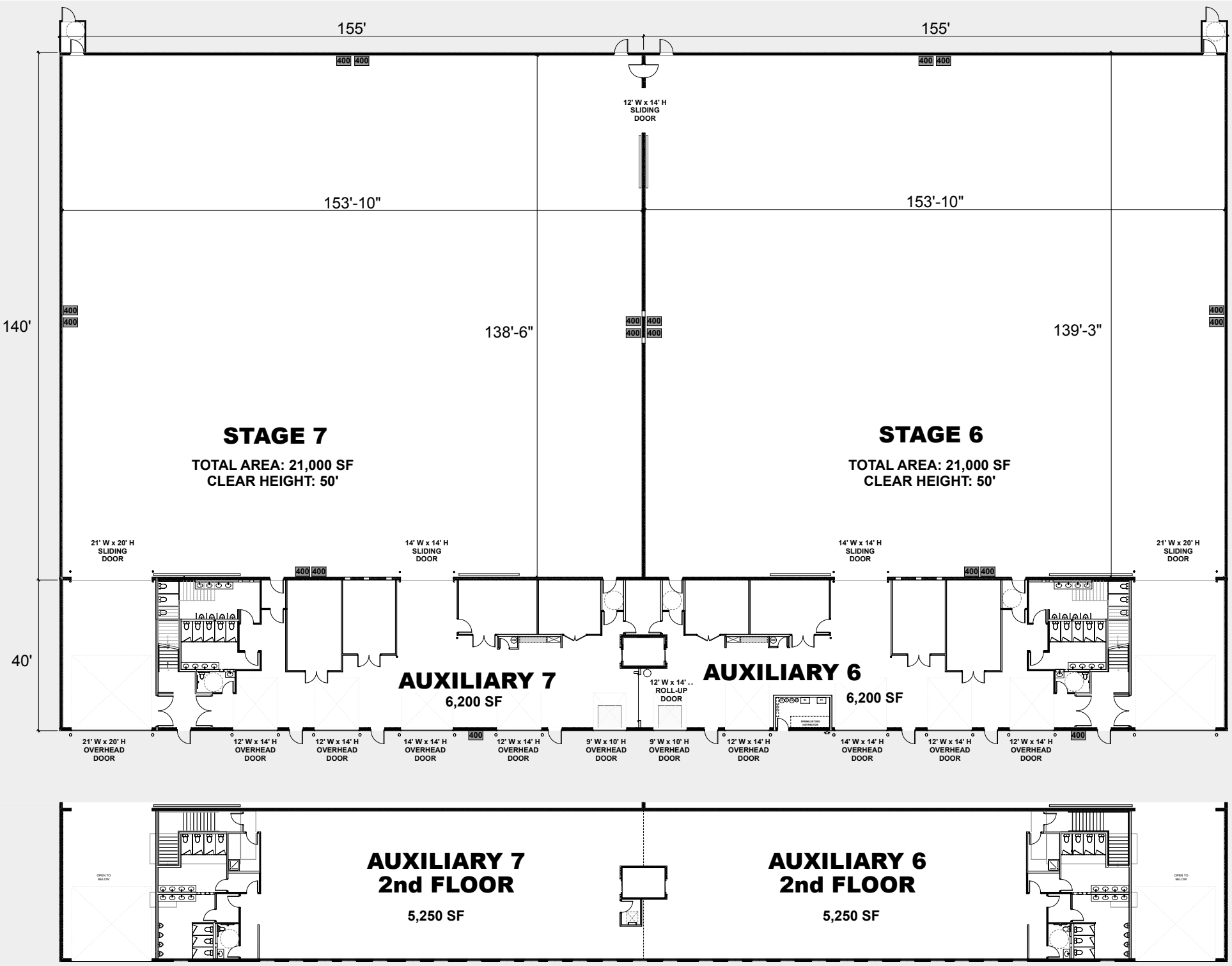
SECOND FLOOR: 4,600 SF

WARDROBE 2

GROUND FLOOR: 3,700 SF

NAME	FLOOR AREA	DIMENSIONS	CLEAR HEIGHT	LOADING DOORS	POWER	AC / HEAT	SOUNDPROOF	DIMMER ROOM	EXHAUST FANS	FEATURES
STAGE 3	24,000 SF	200' X 120'	26'	2 GROUND LEVEL	2 X 400 A 1 X 200 A	NO / YES	YES	YES	YES	HIGH SPEED WIFI
WARDROBE 2	8,300 SF	101' X 46' & 91' X 41'				YES / YES				BREAKDOWN ROOM W/ WASHERS/DRYERS + SINKS





NORTH CAMPUS

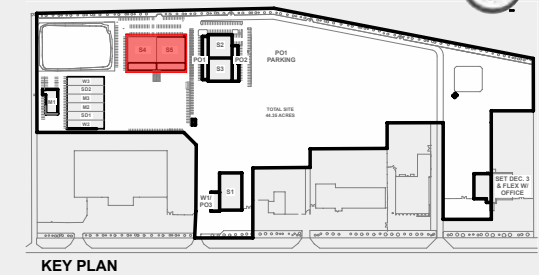
ADDRESS
6999 84th STREET SE
CALGARY, ALBERTA
CANADA

STAGES 6&7

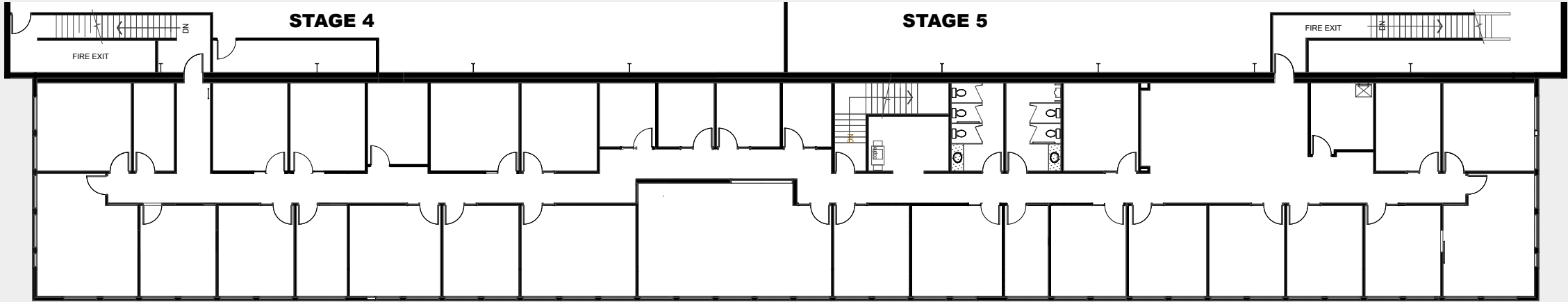
CONTACT
SCOTT EVANS
604.928.5050
scott@rockymountainfilmstudio.com
rockymountainfilmstudio.com

Copyright Rocky Mountain Film Studio 2022
DIMENSIONS ON PLANS MUST BE CONFIRMED ON SITE.

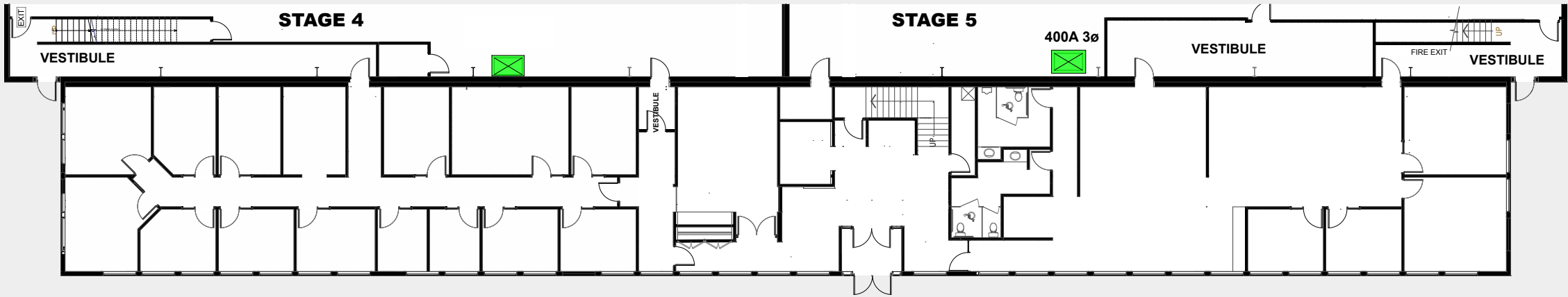
NAME	AREA	DIMENSIONS	CLEAR HEIGHT	LOADING DOORS	POWER	AC / HEAT	SOUNDPROOF	DIMMER ROOM	EXHAUST FANS	FEATURES
STAGE 6	21,000 SF	138' X 153'-6"	50'		8 X 400 A	YES / YES	YES	YES	YES	HIGH SPEED WIFI
AUXILIARY 6	11,450 SF	155' X 40'		5 GROUND LEVEL 1 DOCK LEVEL						SHARED FREIGHT ELEVATOR
STAGE 7	21,000 SF	138' X 153'-6"	50'		8 X 400 A	YES / YES	YES	YES	YES	HIGH SPEED WIFI
AUXILIARY 7	11,450 SF	155' X 40'		5 GROUND LEVEL 1 DOCK LEVEL						SHARED FREIGHT ELEVATOR
CIRCUS PARKING	2.5 ACRES				4 X 400 A					



KEY PLAN



PRODUCTION OFFICE 2
SECOND FLOOR: 8,500 SF



PRODUCTION OFFICE 2
GROUND FLOOR: 7,200 SF

NORTH CAMPUS

ADDRESS

6999 84th STREET SE
CALGARY, ALBERTA
CANADA

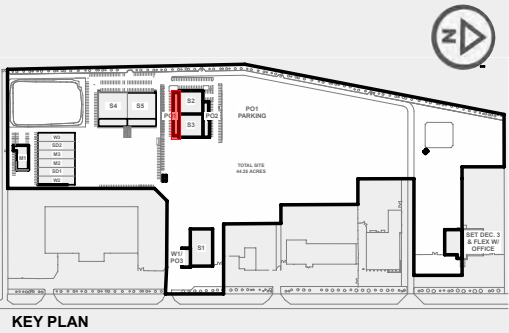
PRODUCTION OFFICE 2

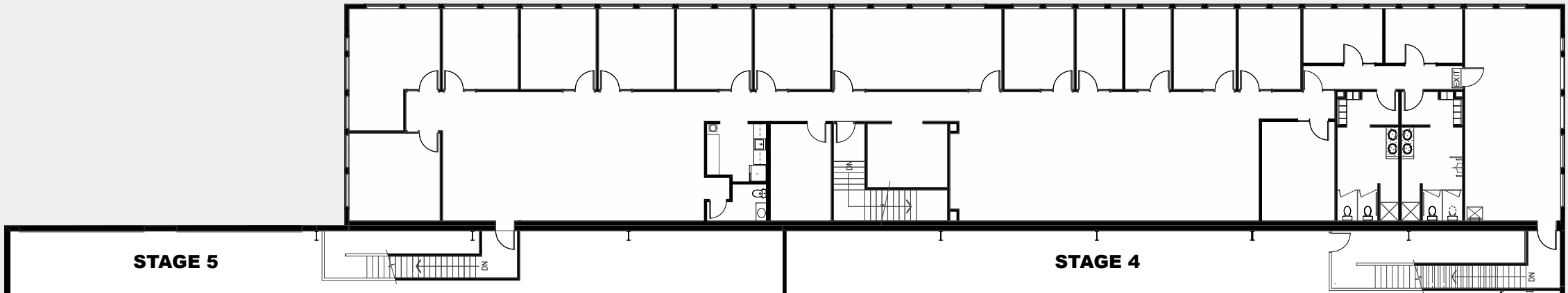
CONTACT

SCOTT EVANS
604.928.5050
scott@rockymountainfilmstudio.com
rockymountainfilmstudio.com

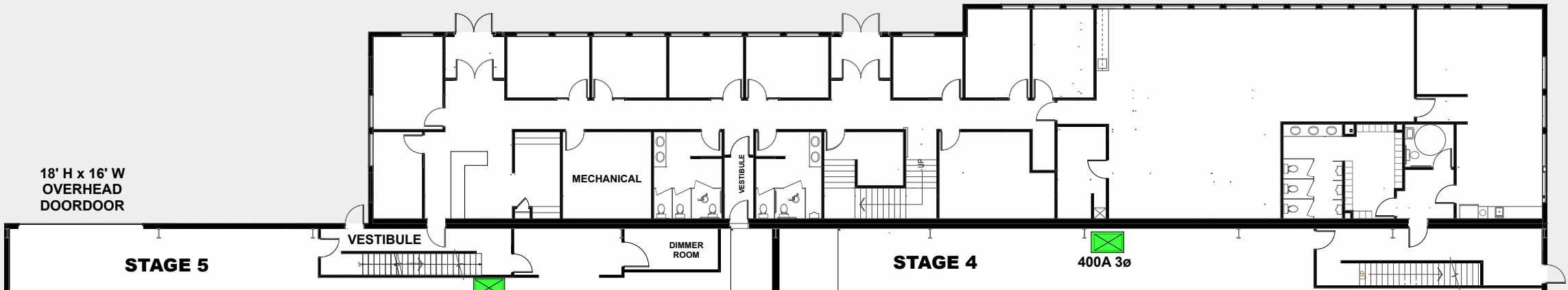
Copyright Rocky Mountain Film Studio 2022
DIMENSIONS ON PLANS MUST BE CONFIRMED ON SITE.

NAME	FLOOR AREA	DIMENSIONS	CLEAR HEIGHT	LOADING DOORS	AC / HEAT	EXHAUST FANS	FEATURES	
PRODUCTION OFFICE 2	15,700 SF	N/A	N/A	N/A	YES / YES	N/A	HIGH SPEED WIFI FULLY FURNISHED	





PRODUCTION OFFICE 3
SECOND FLOOR 7,000 SF



PRODUCTION OFFICE 3
GROUND FLOOR 6,500 SF

NORTH CAMPUS

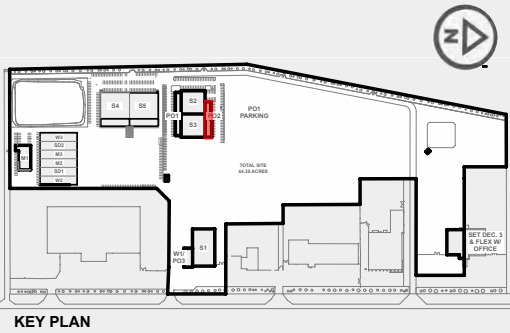
ADDRESS
6999 84th STREET SE
CALGARY, ALBERTA
CANADA

**PRODUCTION
OFFICE 3**

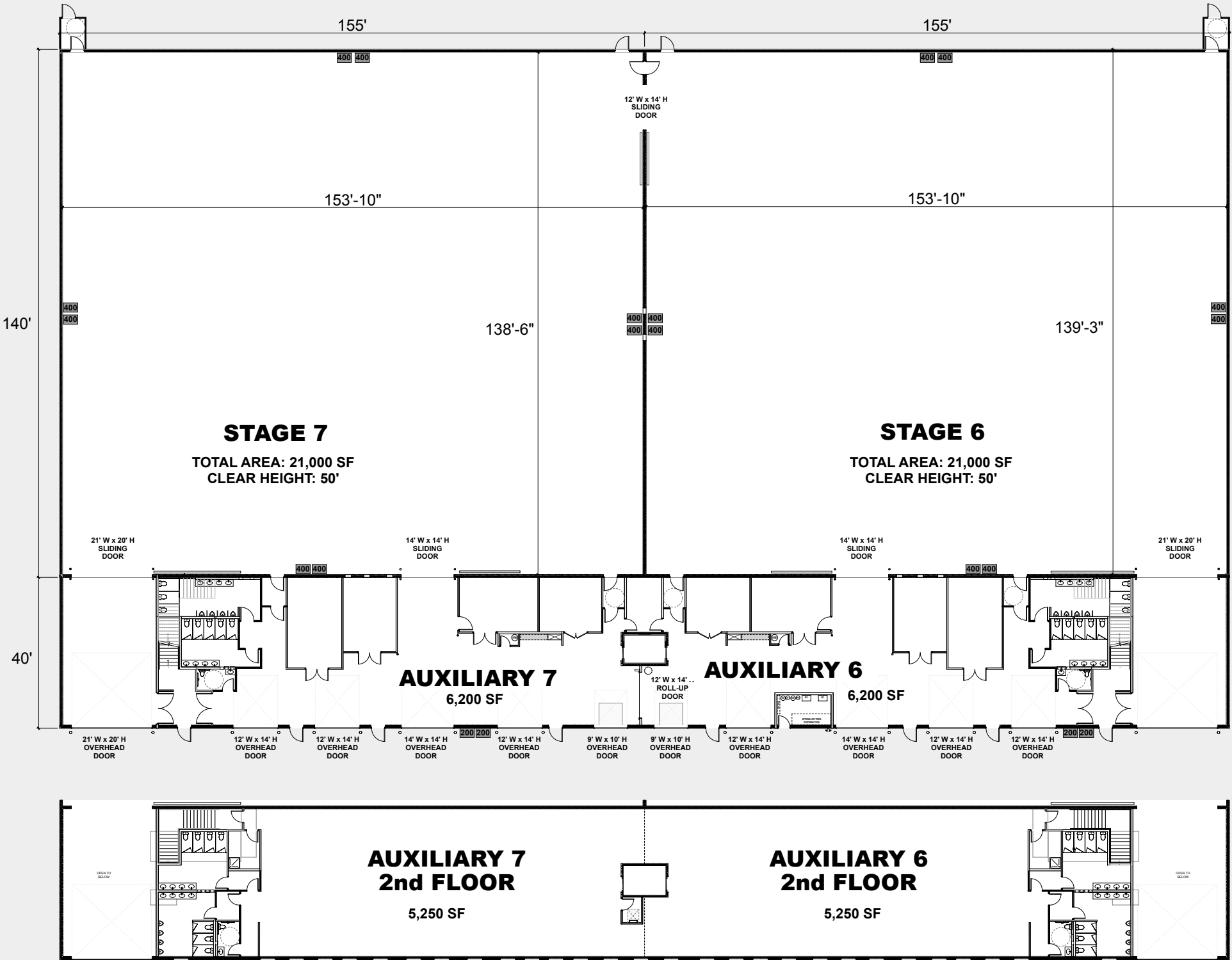
CONTACT
SCOTT EVANS
604.928.5050
scott@rockymountainfilmstudio.com
rockymountainfilmstudio.com

Copyright Rocky Mountain Film Studio 2022
DIMENSIONS ON PLANS MUST BE CONFIRMED ON SITE.

NAME	FLOOR AREA	DIMENSIONS	CLEAR HEIGHT	LOADING DOORS	AC / HEAT	EXHAUST FANS	FEATURES	
PRODUCTION OFFICE 3	13,500 SF	N/A	N/A	N/A	YES	N/A	HIGH SPEED WIFI FULLY FURNISHED	



KEY PLAN



NORTH CAMPUS

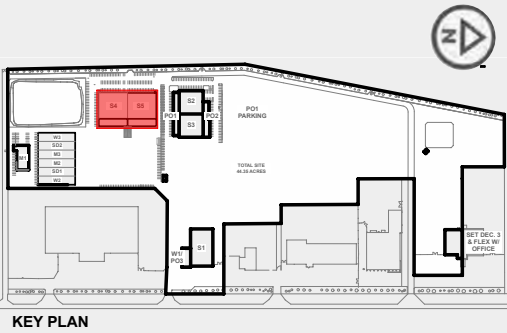
ADDRESS
6999 84th STREET SE
CALGARY, ALBERTA
CANADA

STAGES 6&7

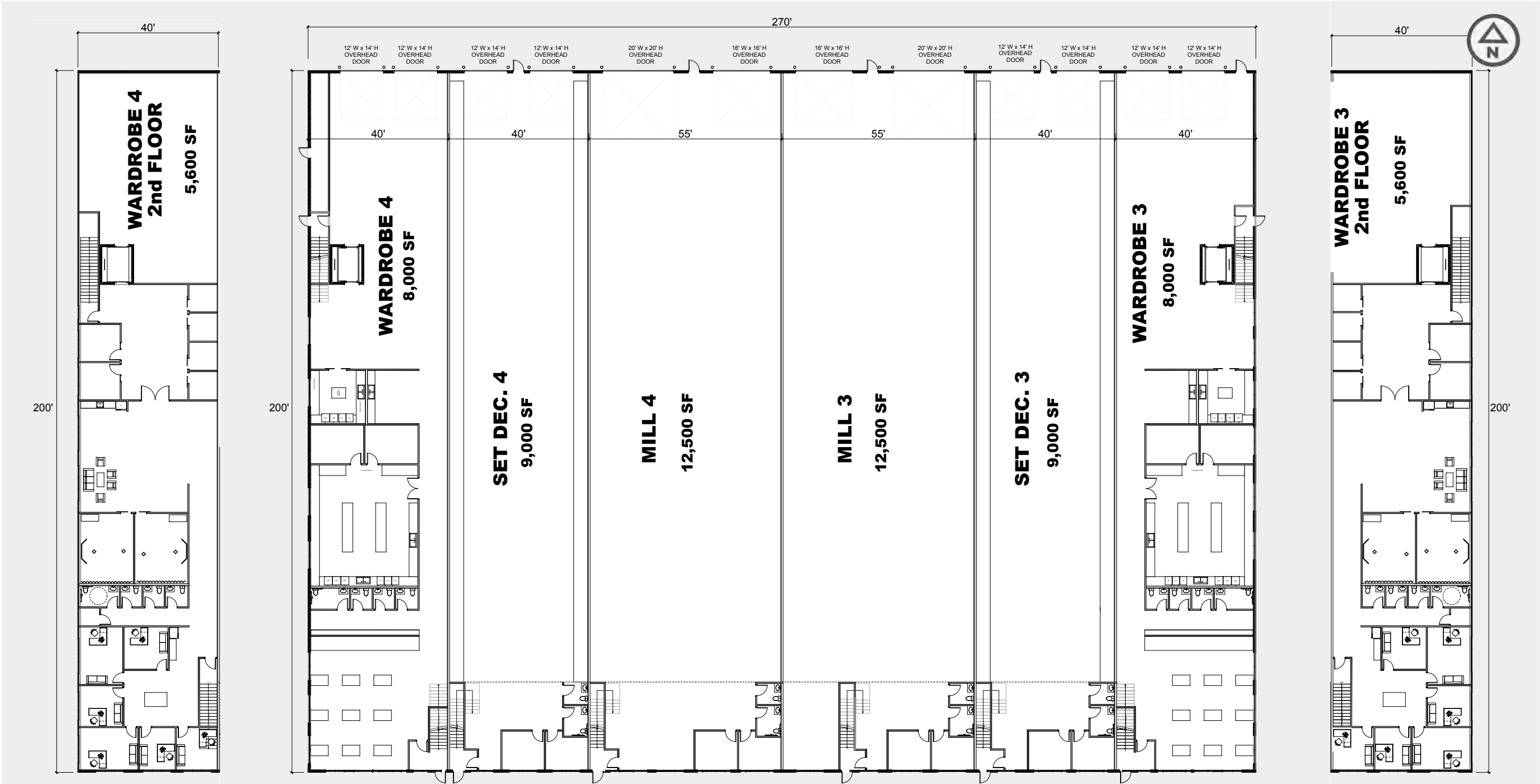
CONTACT
SCOTT EVANS
604.928.5050
scott@rockymountainfilmstudio.com
rockymountainfilmstudio.com

Copyright Rocky Mountain Film Studio 2022
DIMENSIONS ON PLANS MUST BE CONFIRMED ON SITE.

NAME	AREA	DIMENSIONS	CLEAR HEIGHT	LOADING DOORS	POWER	AC / HEAT	SOUNDPROOF	DIMMER ROOM	EXHAUST FANS	FEATURES
STAGE 6	21,000 SF	138' X 153'-6"	50'		8 X 400 A	YES / YES	YES	YES	YES	HIGH SPEED WIFI
AUXILIARY 6	11,450 SF	155' X 40'		5 GROUND LEVEL 1 DOCK LEVEL	1 X 400 A					SHARED FREIGHT ELEVATOR
STAGE 7	21,000 SF	138' X 153'-6"	50'		8 X 400 A	YES / YES	YES	YES	YES	HIGH SPEED WIFI
AUXILIARY 7	11,450 SF	155' X 40'		5 GROUND LEVEL 1 DOCK LEVEL	1 X 400 A					SHARED FREIGHT ELEVATOR
CIRCUS PARKING	2.5 ACRES				4 X 400 A					



KEY PLAN



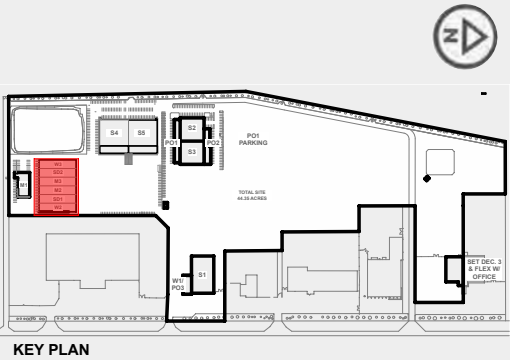
NORTH CAMPUS

ADDRESS
6999 84th STREET SE
CALGARY, ALBERTA
CANADA

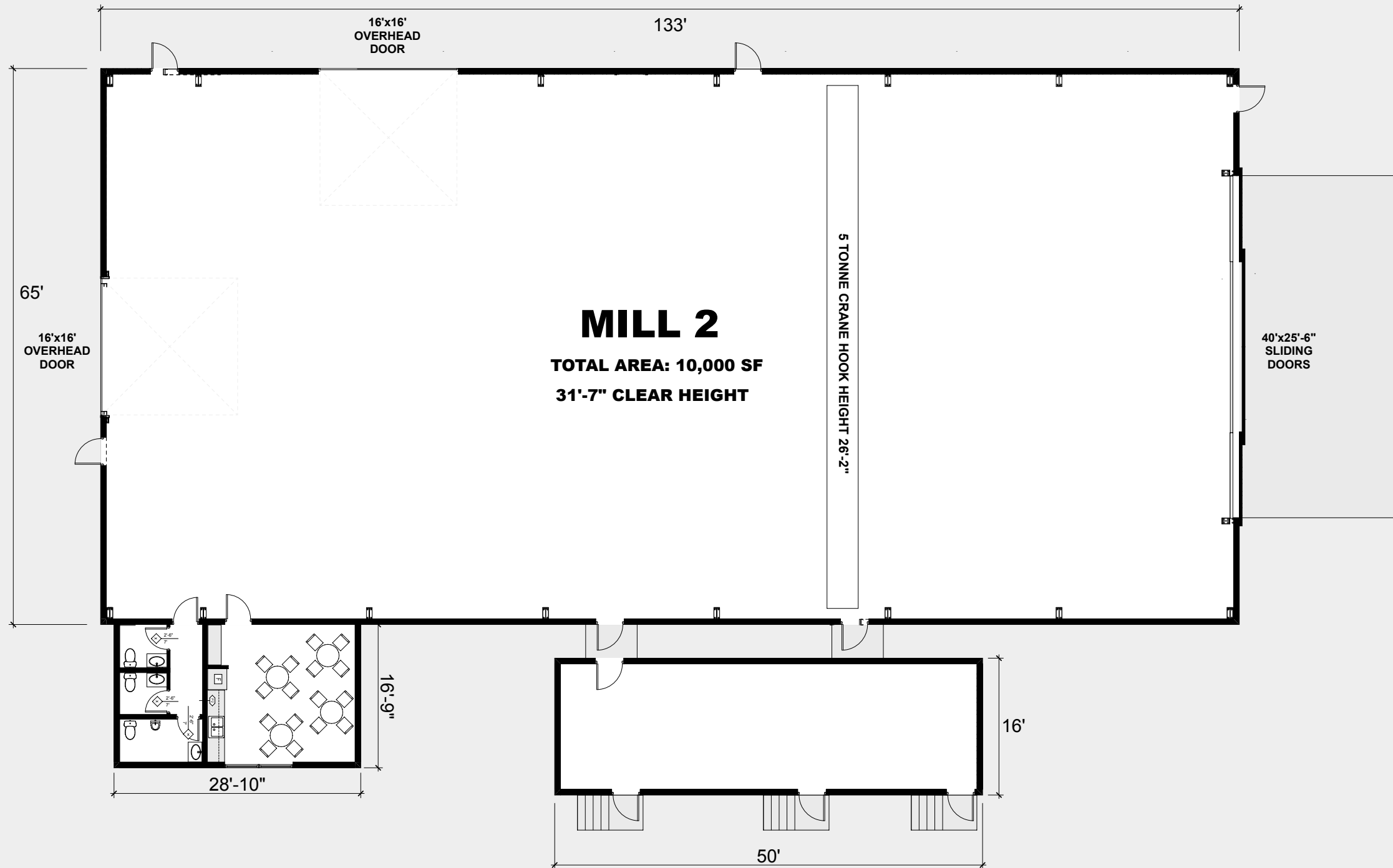
SUPPORT BUILDING

CONTACT
SCOTT EVANS
604.928.5050
scott@rockymountainfilmstudio.com
rockymountainfilmstudio.com

NAME	FLOOR AREA	DIMENSIONS	LOADING DOORS	AC / HEAT	EXHAUST FANS	FEATURES
WARDROBE 3	13,600 SF		2 GROUND LEVEL	YES / YES	YES	ELEVATOR TO SECOND FLOOR, BREAK DOWN ROOMS, LAUNDRY FACILITIES, OFFICES, FITTING ROOMS
WARDROBE 4	13,600 SF		2 GROUND LEVEL	YES / YES	YES	ELEVATOR TO SECOND FLOOR, BREAK DOWN ROOMS, LAUNDRY FACILITIES, OFFICES, FITTING ROOMS
SET DEC. 3	9,000 SF		2 GROUND LEVEL	NO / YES	YES	MEZZANINE, FURNISHED OFFICES, STANDARD WAREHOUSE SHELVING
SET DEC. 4	9,000 SF		2 GROUND LEVEL	NO / YES	YES	MEZZANINE, FURNISHED OFFICES, STANDARD WAREHOUSE SHELVING
MILL 3	12,500 SF		2 GROUND LEVEL	NO / YES	YES	MEZZANINE, PAINT BOOTH, AIR COMPRESSOR SYSTEM
MILL 4	12,500 SF		2 GROUND LEVEL	NO / YES	YES	MEZZANINE, PAINT BOOTH, AIR COMPRESSOR SYSTEM



Copyright Rocky Mountain Film Studio 2022
DIMENSIONS ON PLANS MUST BE CONFIRMED ON SITE.

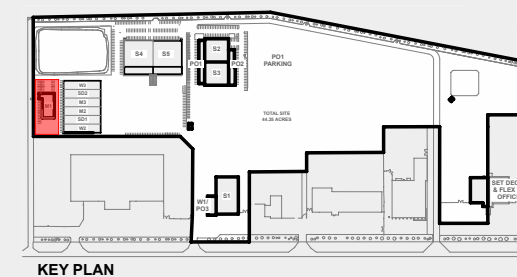


NORTH CAMPUS

ADDRESS

6999 84th STREET SE
CALGARY, ALBERTA
CANADA

MILL 2

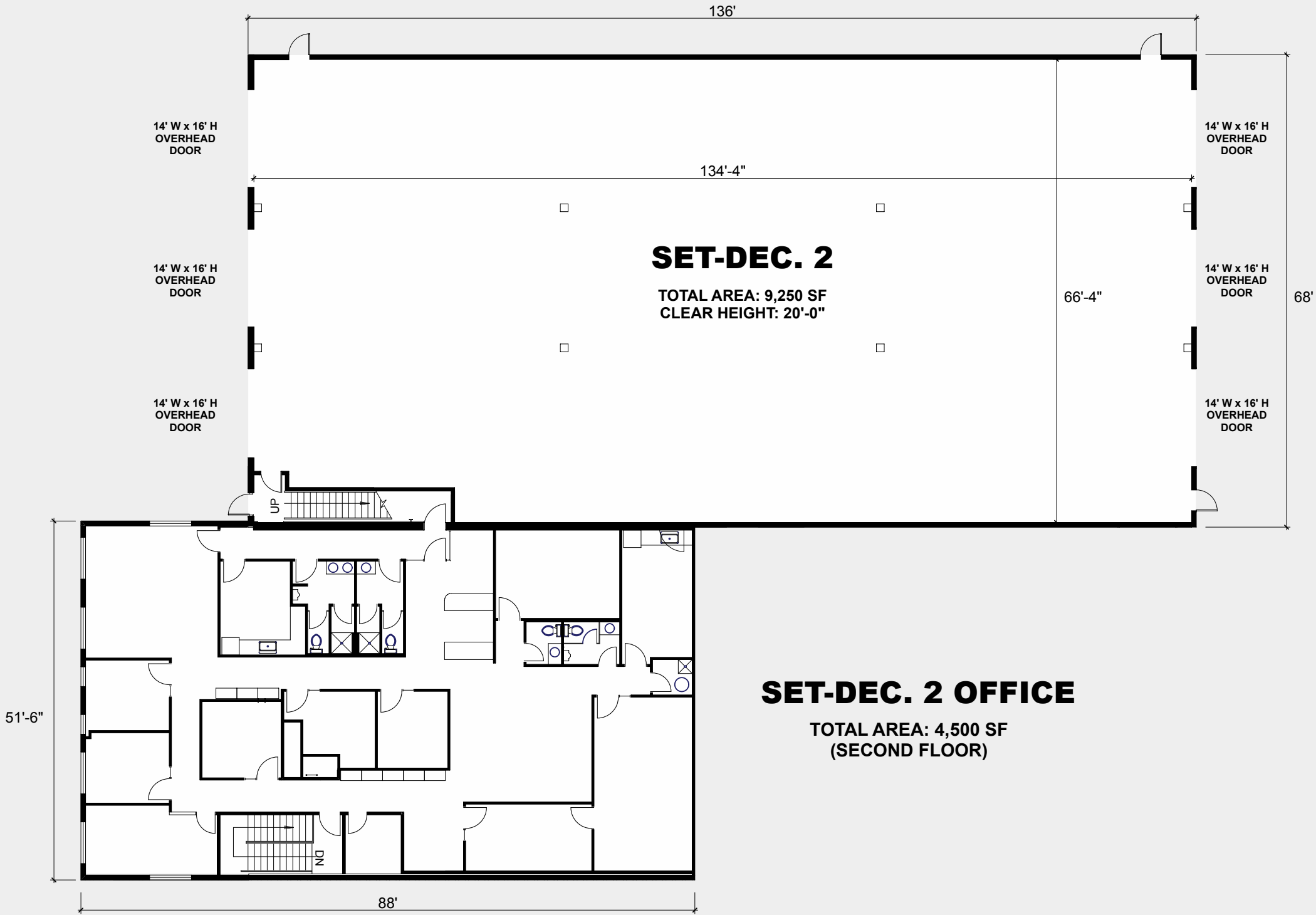


NAME	FLOOR AREA	DIMENSIONS	CLEAR HEIGHT	LOADING DOORS	AC / HEAT	EXHAUST FANS	FEATURES
MILL 2	10,000 SF	133' X 65'	31'-7"	3 GROUND LEVEL	NO / YES	YES	OVERHEAD CRANE, LARGE AIRCRAFT DOOR

CONTACT

SCOTT EVANS
604.928.5050
scott@rockymountainfilmstudio.com
rockymountainfilmstudio.com

Copyright Rocky Mountain Film Studio 2022
DIMENSIONS ON PLANS MUST BE CONFIRMED ON SITE.



SET-DEC. 2

TOTAL AREA: 9,250 SF
CLEAR HEIGHT: 20'-0"

SET-DEC. 2 OFFICE

TOTAL AREA: 4,500 SF
(SECOND FLOOR)

NORTH CAMPUS

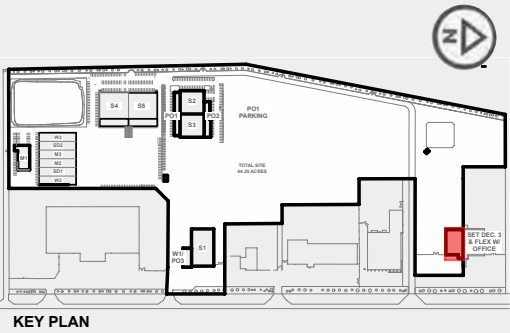
ADDRESS
6999 84th STREET SE
CALGARY, ALBERTA
CANADA

**SET DEC. 2
& OFFICE**

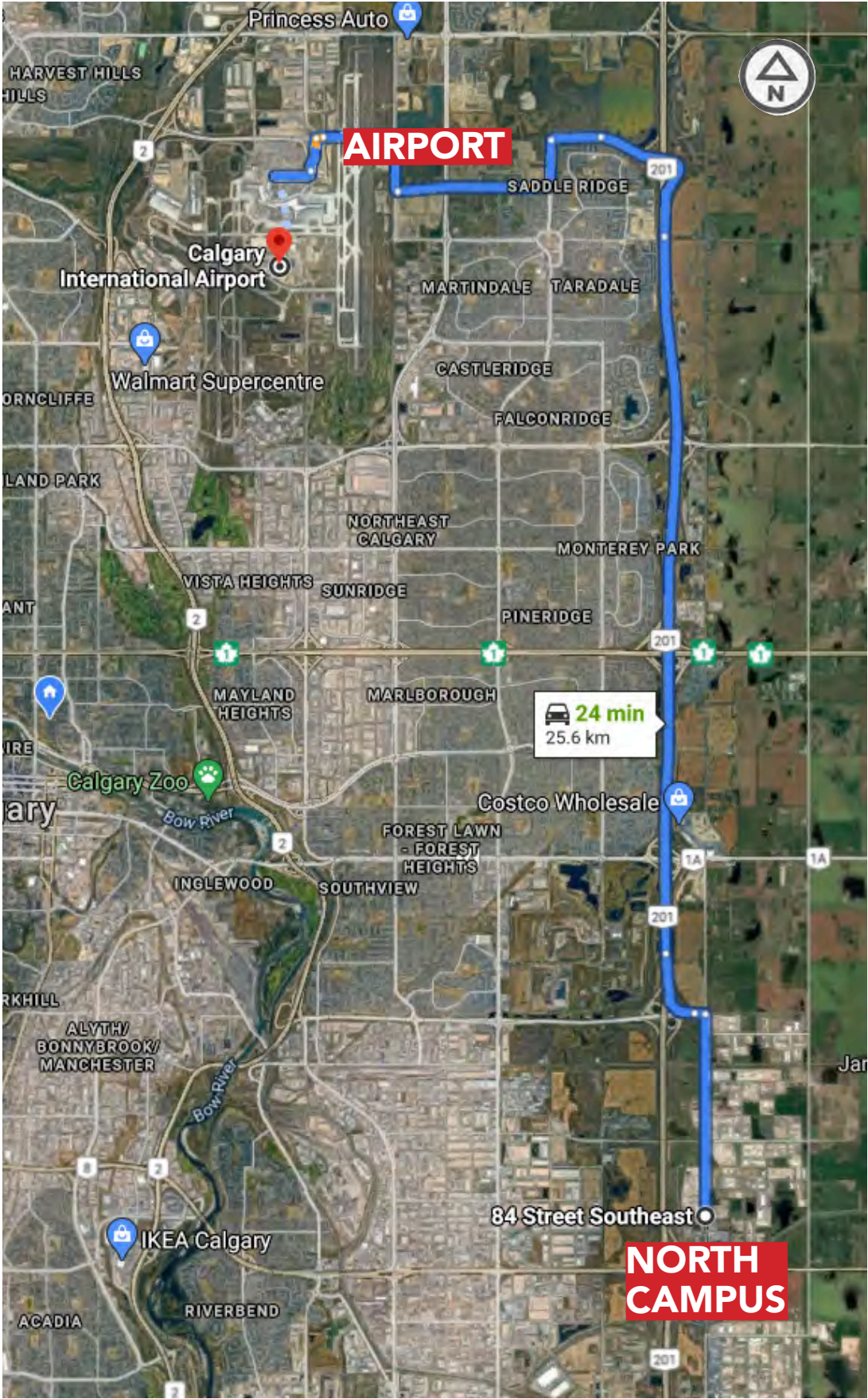
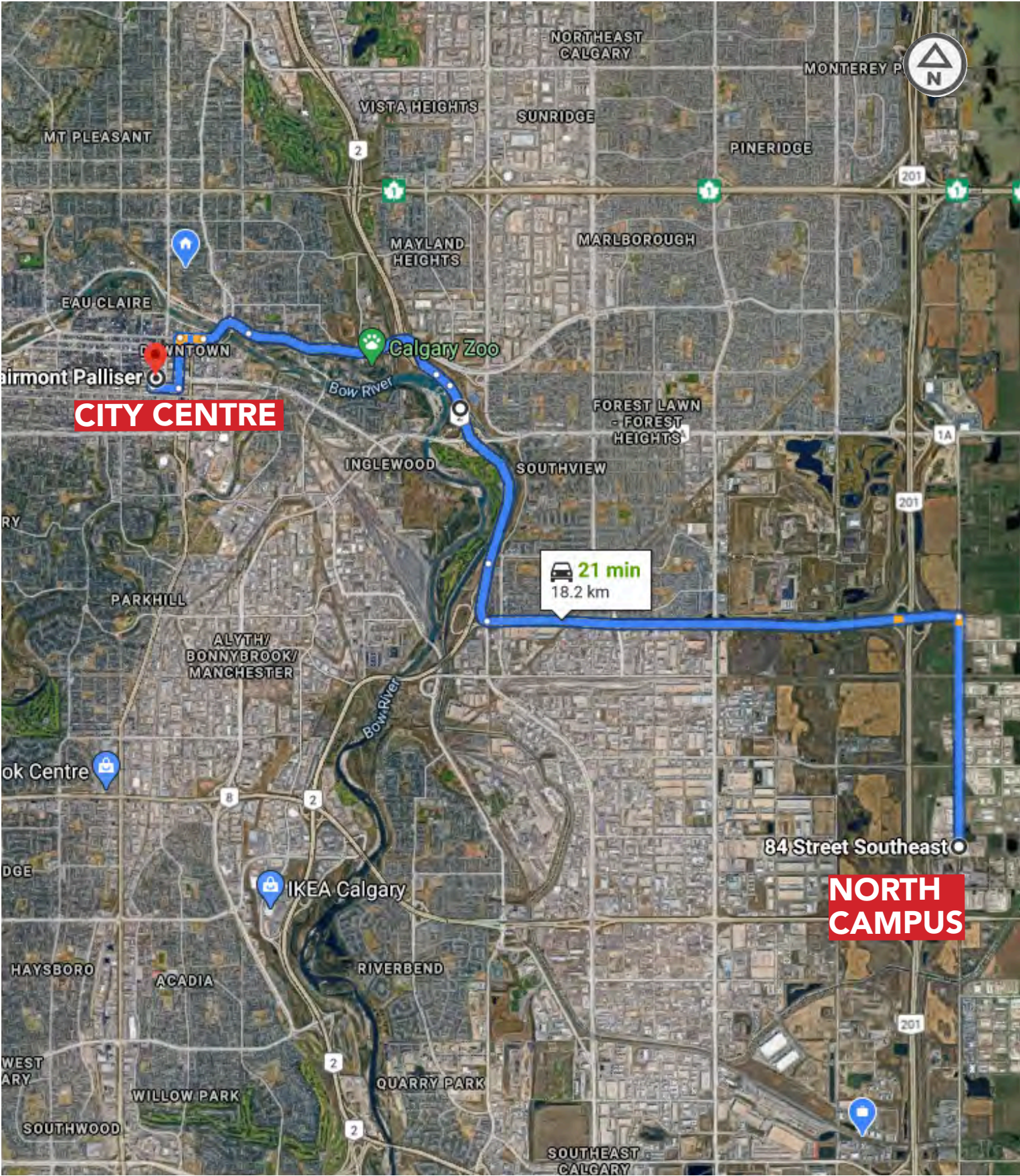
CONTACT
SCOTT EVANS
604.928.5050
scott@rockymountainfilmstudio.com
rockymountainfilmstudio.com

Copyright Rocky Mountain Film Studio 2022
DIMENSIONS ON PLANS MUST BE CONFIRMED ON SITE.

NAME	AREA	DIMENSIONS	CLEAR HEIGHT	LOADING DOORS	AC / HEAT	FEATURES
SET-DEC. 2	9,250 SF	136' X 68'	20'	6 GROUND LEVEL DOORS	NO / YES	HIGH SPEED WIFI
SET-DEC OFFICE	4,500 SF	51'-6" X 88'			YES / YES	HIGH SPEED WIFI



KEY PLAN



NORTH CAMPUS

ADDRESS
6999 84th STREET SE
CALGARY, ALBERTA
CANADA

MAP

CONTACT
SCOTT EVANS
604.928.5050
scott@rockymountainfilmstudio.com
rockymountainfilmstudio.com