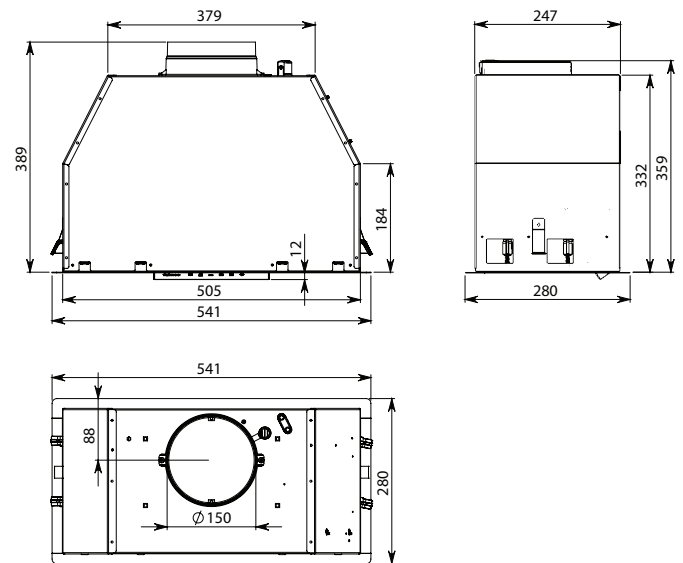




Product Features

|                                |  |
|--------------------------------|--|
| <b>Motor Type</b>              | On Board Motor   |
| <b>Dimensions</b>              | 541(W) x 359(H) x 280(D)mm<br>Suits 50cm-75cm Cooking Surfaces |
| <b>Cut-Out</b>                 | 512 x 250mm  |
| <b>Filtration Type</b>         | 2 x Baffle Filters   |
| <b>Lighting Type</b>           | Dynamic LED Strip  |
| <b>Finish</b>                  | 304 Stainless Steel  |
| <b>Install</b>                 | Flush Frame  |
| <b>Controls</b>                | Touch Control  |
| <b>Speed Settings</b>          | 3 Speed + Boost  |
| <b>Timer Function</b>          | 15 Min Auto Shut-Off   |
| <b>Ducting</b>                 | 150mm Circular Outlet  |
| <b>Installation Info</b>       | Quick Install Clips  |
| <b>Motor Type</b>              | E-Tech Brushless   |
| <b>Remote Control</b>          | Optional   |
| <b>Grease Filter Alarm</b>     | Yes  |
| <b>Dishwasher Safe Filters</b> | Yes  |

Dimensioned Drawings



\* Semi-rigid or rigid ducting recommended.

| Model Code | Motor Output          | Installation Option |
|------------|-----------------------|---------------------|
| FP3SN60S2  | 950m <sup>3</sup> /hr | Top Ducted          |