

| CABIN INFORMATION | Y/C1 | Y/C2 | Y/C3 | TOTAL |
|--------------------------|------------------------------------|------------------------------------|------------------------------------|-------|
| PASSENGER SEATS : | 72 | 155 | 118 | 345 |
| - PITCH | 30" | 32"/33" | 30"/32" | |
| - ABREAST | 9 | 8/9 | 7/9 | |
| GALLEY : | 1 | 0 | 2 | 3 |
| LAVATORIES : | 1 | 4 | 2 | 7 |
| - PASSENGER / LAVATORIES | 72 | 39 | 59 | |
| COAT CLOSET : | 1 | 0 | 0 | 1 |
| STOWAGE : | 0 | 0 | 2 | 2 |
| DOGHOUSE : | 0 | 2 | 2 | 4 |
| ATTENDANT SEAT : | STANDARD 4 HIGH COMFORT 1 | STANDARD 4 HIGH COMFORT 0 | STANDARD 4 HIGH COMFORT 2 | 15 |

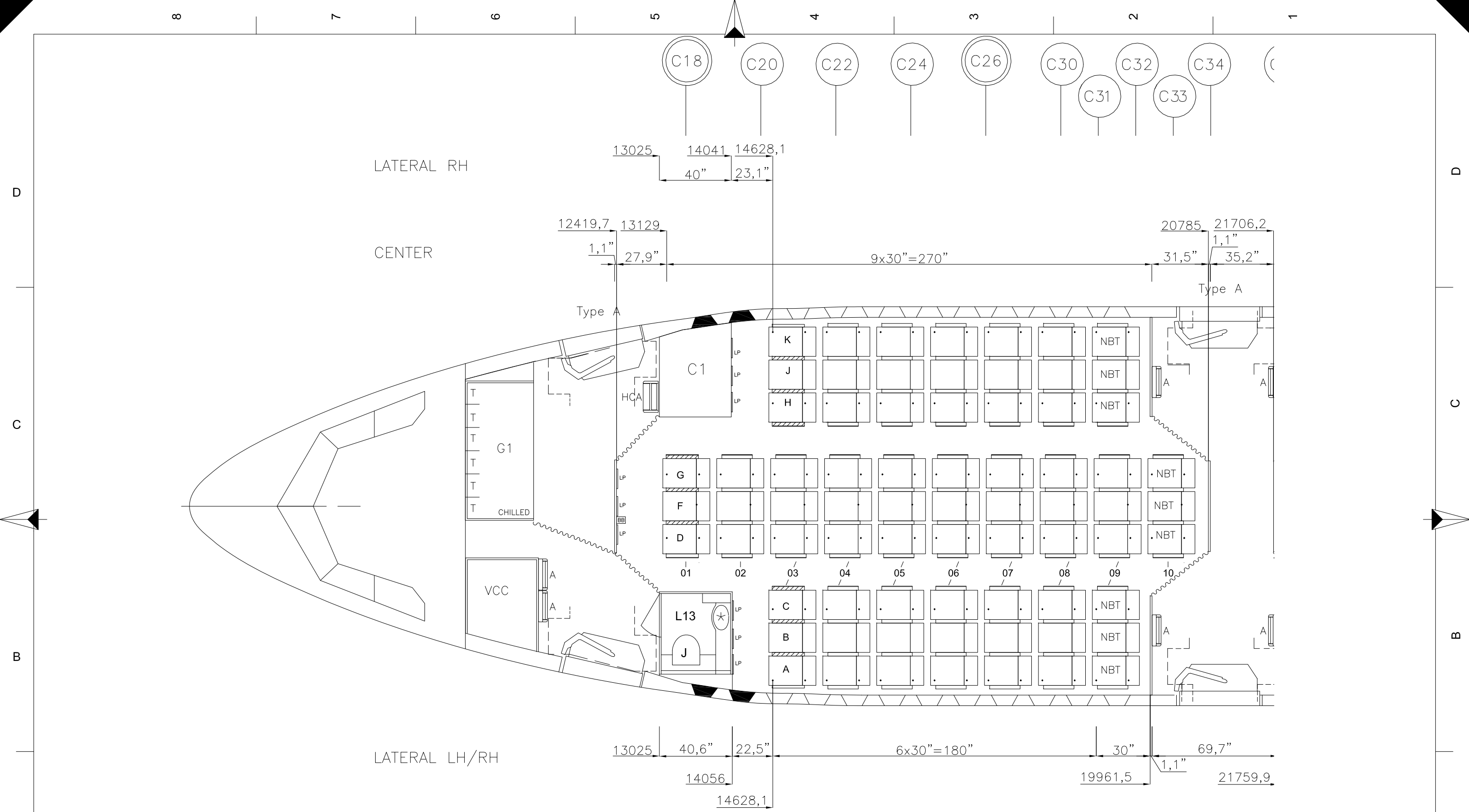
SEAT CHARACTERISTICS AND LEGEND:

- IN ARMREST TABLE
- A ATTENDANT SEAT
- HCA HIGH COMFORT ATTENDANT SEAT
- LP LITTERATURE POCKET
- NBT NO BACKREST TABLE
- BB BABY BASSINET

NOTE:
- ALL SEAT LOCATING DIMENSIONS ARE TO FRONT STUD CENTERLINE.

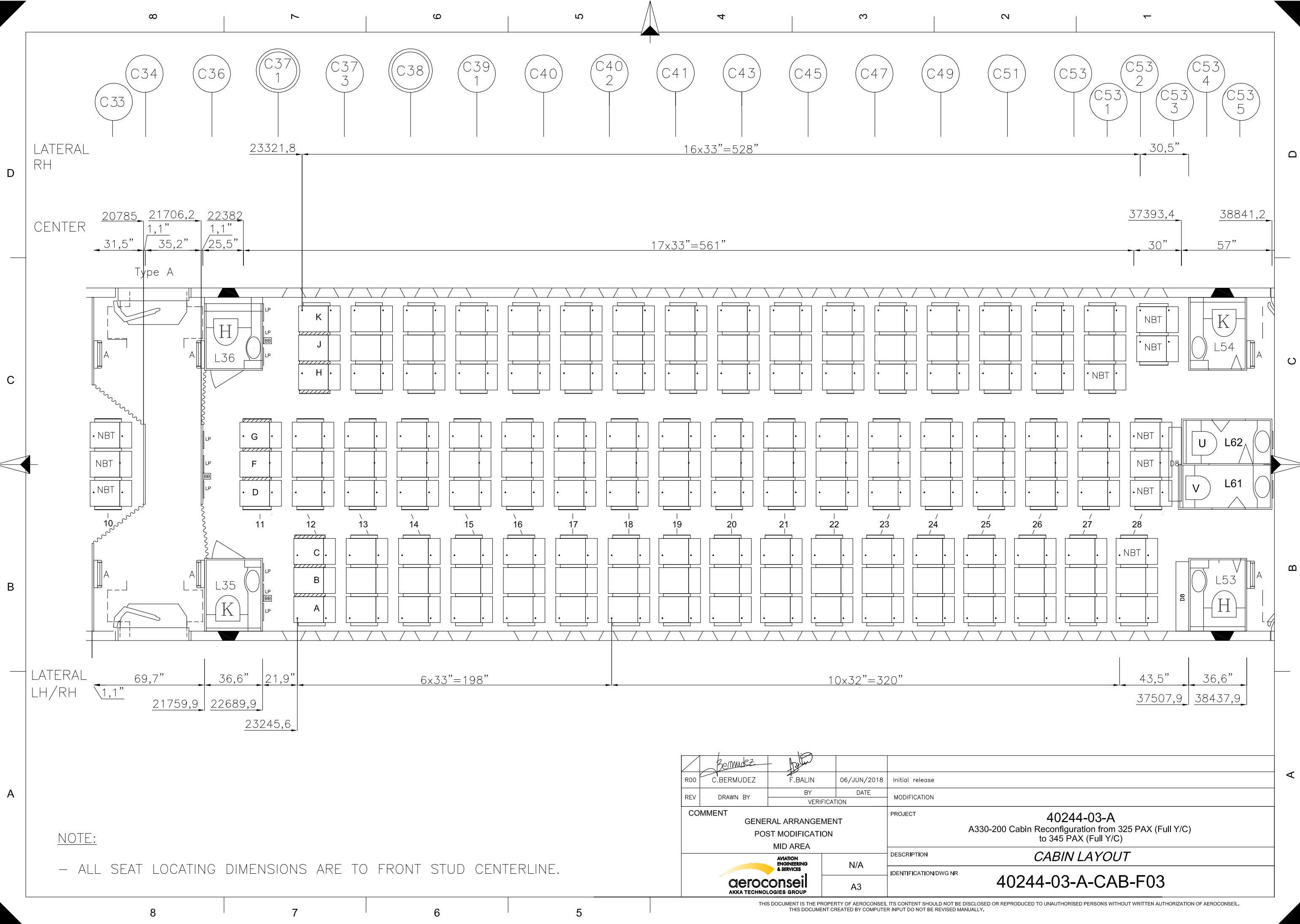
| | | | | |
|--|-------------|--------------|-------------|---|
| ROO | C. BERMUDEZ | F. BALIN | 06/JUN/2018 | Initial release |
| REV | DRAWN BY | BY | DATE | MODIFICATION |
| COMMENT | | VERIFICATION | | PROJECT |
| GENERAL ARRANGEMENT POST MODIFICATION | | | | 40244-03-A A330-200 Cabin Reconfiguration from 325 PAX (Full Y/C) to 345 PAX (Full Y/C) |
| DESCRIPTION | | N/A | | CABIN LAYOUT |
| IDENTIFICATION/DWG NR | | A3 | | 40244-03-A-CAB-F01 |






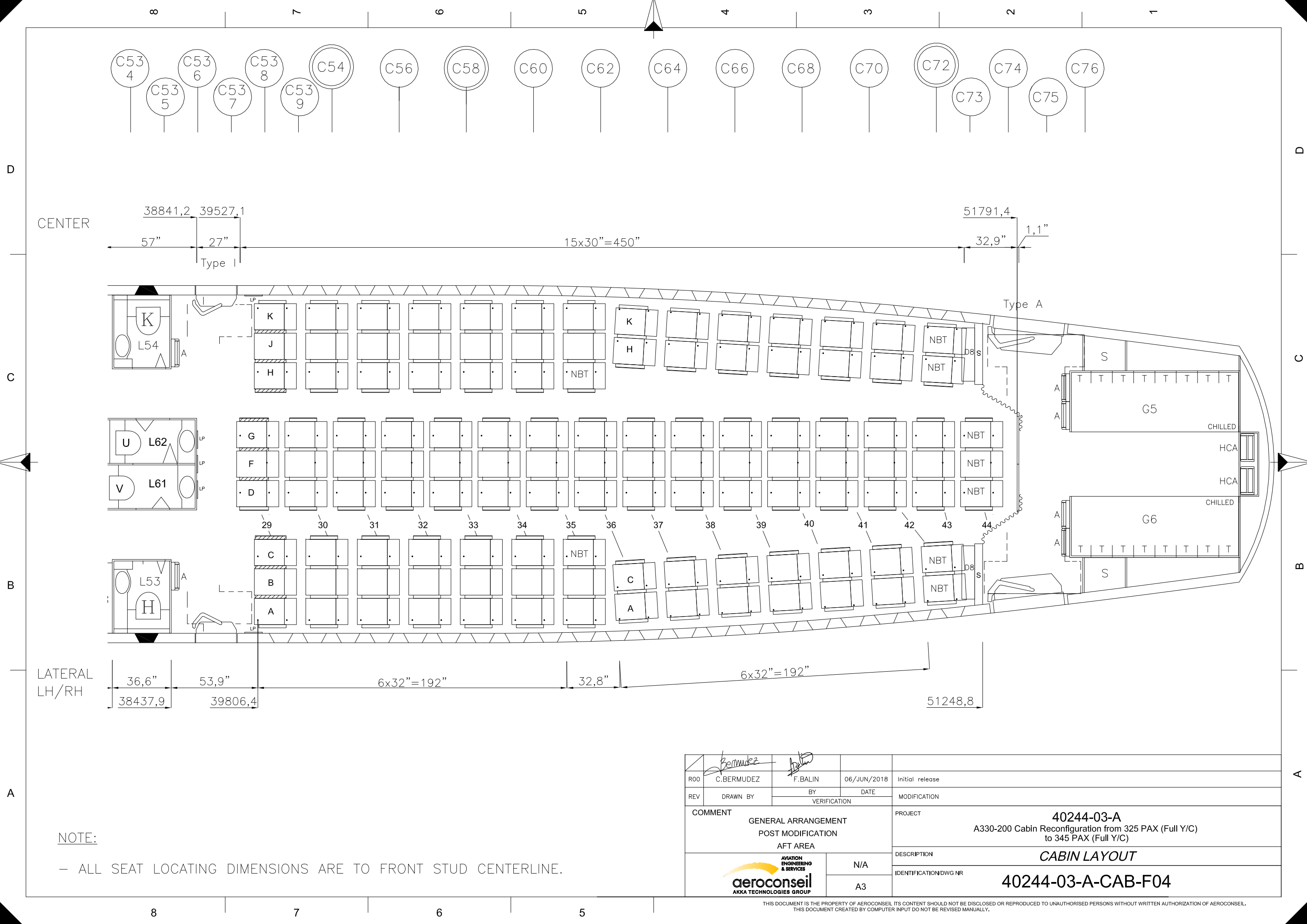
NOTE:
 - ALL SEAT LOCATING DIMENSIONS ARE TO FRONT STUD CENTERLINE.

| | | | | |
|--|-------------|--------------------|-------------|---|
| ROO | C. BERMUDEZ | F. BALIN | 06/JUN/2018 | Initial release |
| REV | DRAWN BY | BY | DATE | MODIFICATION |
| COMMENT | | VERIFICATION | | PROJECT |
| GENERAL ARRANGEMENT POST MODIFICATION FWD AREA | | N/A | | 40244-03-A A330-200 Cabin Reconfiguration from 325 PAX (Full Y/C) to 345 PAX (Full Y/C) |
| DESCRIPTION | | CABIN LAYOUT | | |
| IDENTIFICATION/DWG NR | | 40244-03-A-CAB-F02 | | |



NOTE:
 - ALL SEAT LOCATING DIMENSIONS ARE TO FRONT STUD CENTERLINE.

| | | | | |
|---------|---|--------------|-------------|---|
| ROO | C. BERMUDEZ | F. BALIN | 06/JUN/2018 | Initial release |
| REV | DRAWN BY | BY | DATE | MODIFICATION |
| | | VERIFICATION | | |
| COMMENT | GENERAL ARRANGEMENT POST MODIFICATION MID AREA | | | PROJECT 40244-03-A A330-200 Cabin Reconfiguration from 325 PAX (Full Y/C) to 345 PAX (Full Y/C) |
| |  AVIATION ENGINEERING & SERVICES aeroconseil AKKA TECHNOLOGIES GROUP | | | DESCRIPTION CABIN LAYOUT |
| | N/A | | | IDENTIFICATION/DWG NR 40244-03-A-CAB-F03 |
| | A3 | | | |



CENTER

LATERAL
LH/RH

NOTE:

- ALL SEAT LOCATING DIMENSIONS ARE TO FRONT STUD CENTERLINE.

| | | | | |
|--|------------|--------------|---|-----------------|
| R00 | C.BERMUDEZ | F.BALIN | 06/JUN/2018 | Initial release |
| REV | DRAWN BY | BY | DATE | MODIFICATION |
| | | VERIFICATION | | |
| COMMENT | | | PROJECT | |
| GENERAL ARRANGEMENT POST MODIFICATION AFT AREA | | | 40244-03-A A330-200 Cabin Reconfiguration from 325 PAX (Full Y/C) to 345 PAX (Full Y/C) | |
| DESCRIPTION | | | CABIN LAYOUT | |
| IDENTIFICATION/DWG NR | | | 40244-03-A-CAB-F04 | |