

Automation Interface Module (AIM)

INTRODUCTION

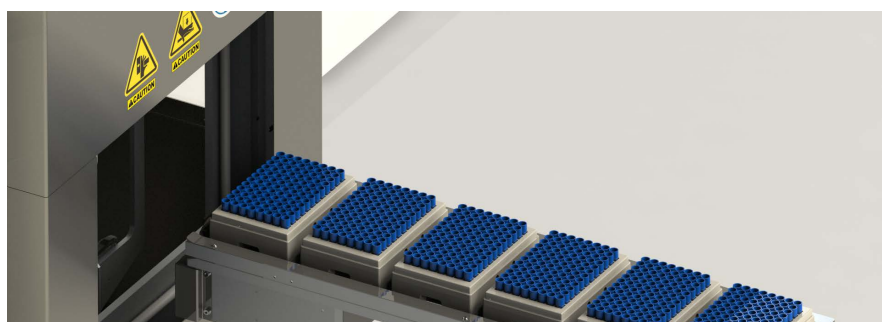
The AIM delivers samples to (or conversely, receives samples from) a Brooks 6 Position SD Rack Tray on its external diving board location.

Any samples that can be presented onto SBS format racks (whether tubes, vials or plates) can be interchanged in this manner.

The AIM therefore provides a means of directly interfacing the store with some external automation/system.



One iteration of the Brooks Automation Interface Module



AIM I/O Platform/SBS Racks

KEY BENEFITS

- ✓ Supports reduced turnaround time
- ✓ Greater overall throughput and reduction of manual processing
- ✓ Enables direct integration with automation platforms
- ✓ Supports any samples (tubes, vials and plates) stored on SBS format racks

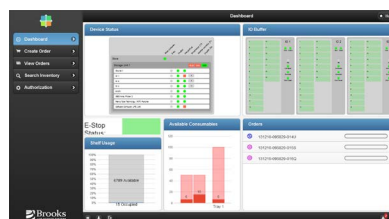
TYPICAL APPLICATIONS

- ✓ Carousel based Input/Output to enable easy transfer of samples to/from a detached platform
- ✓ Sample thawing, centrifuging, auditing, tube picking and carousel Input/Output
- ✓ Liquid handling platforms (Tecan, Hi-Res Bio, Perkin-Elmer, Labcyte, Dynamic Devices, and more...)
- ✓ Tube decapping and auditing
- ✓ Brooks high volume liquid handling platform
- ✓ Brooks Prep Cell
- ✓ Acoustic dispensing

STRATA™ SAMPLE MANAGEMENT SOFTWARE

Integrated system control software (LIMS, automation scheduler, ...) would use the Strata API (Application Program Interface) to request sample movement in and out of the AIM.

For further details on the Brooks AIM Web API and Brooks integrated workcell products, please contact your local Brooks representative.



FURTHER INFORMATION

For further information, please contact your local Brooks Life Sciences Representative

**Automated
Storage Systems**

**Cryopreservation &
Cold Chain Solutions**

**Informatics &
Technical Solutions**

**Sample Storage,
Lab Services & Transport**

**Sample Consumables
& Instruments**