

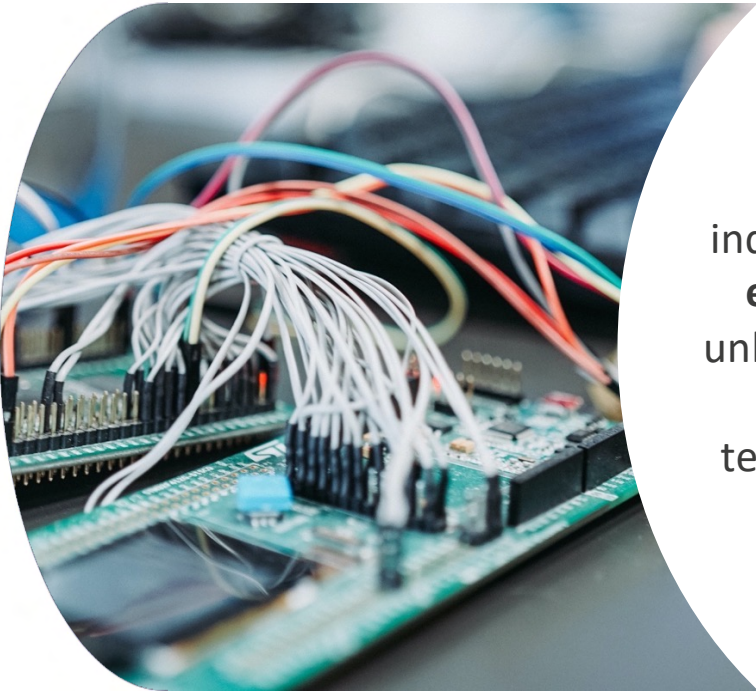


APPLICATIONS



ALOXY UNLOCKS INDUSTRIAL DATA AND ENABLES ACTIONABLE INSIGHTS

LOW-POWER WIRELESS SENSING



Our vision is to make all industrial operations **safer, more efficient, and sustainable**, by unlocking data from unconnected assets leveraging digital technologies such as Internet of Things and data analytics.

CHEMICAL, ENERGY AND UTILITIES



OUR IMPACT



Safety: Reduce incidents and accidents due to manual errors * (e.g., wrong valve manipulations); Send less people in the (hazardous) field



Economic: Employ more high-skilled people to analyze data and reduce expensive manual inspections; Assist operators (e.g., line-ups); Optimize process operations (increase yield) and reduce waste in the process



Environmental: Eliminate wasted chemicals due to contamination in tank storage; Reduce spills due to wrong manual operations (e.g., drain valves)



Climate: Reduce hydrocarbon release by monitoring safety valves in real-time; Reduce emission of transportation for manual inspection **; Monitor fugitive emissions (WIP)

* 90% of accidents are due to manual errors

** 100.000 miles per week at O&G company in North Dakota just for manual valve inspections

ALOXY'S CURRENT IOT APPLICATIONS

MANUAL VALVE MONITORING



Monitor the open – closed position of manually operated valves

EMERGENCY SHOWER MONITORING



Monitor the activation of emergency showers and eye washes

LINE BLINDS MONITORING



Monitor the status of isolations during inspections and maintenance activities

MANY VALVES ARE OPERATED MANUALLY WHICH CAUSES SAFETY, OPERATIONAL AND ENVIRONMENTAL RISKS

The challenge



Travel



Spills



Accidents



Downtime

Wired solutions at high costs

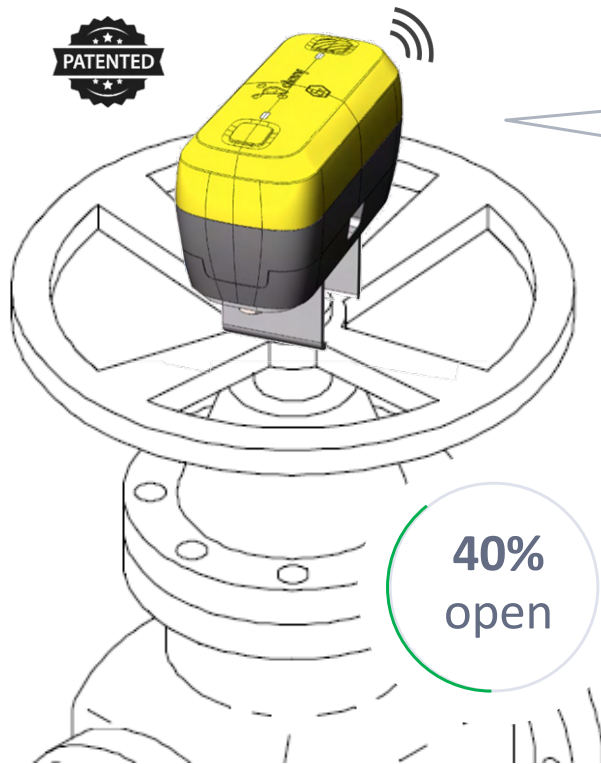
Checking valve in the field

The solution

Aloxy Valve sensor



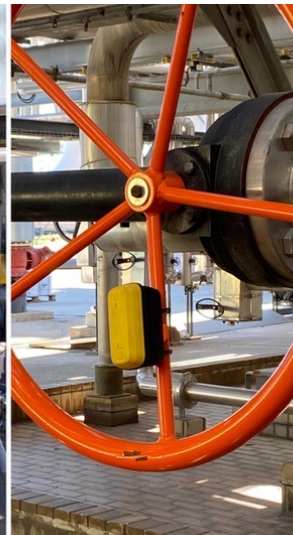
ALOXY MONITORS ANY TYPE OF MANUAL VALVE IN REAL-TIME



- ✓ Fits any type of manual valve
- ✓ Easy and universal mounting
- ✓ Installation in minutes
- ✓ Calibration with buttons or app
- ✓ Accurate valve positions
- ✓ Open/close and incremental (%)
- ✓ 5+ years battery autonomy
- ✓ Secure data end-to-end encryption



Ball valve



Gear box



Gate valve

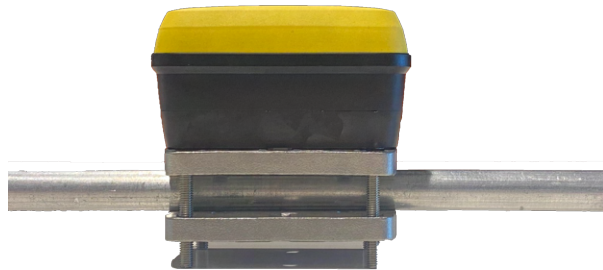


Drain valve

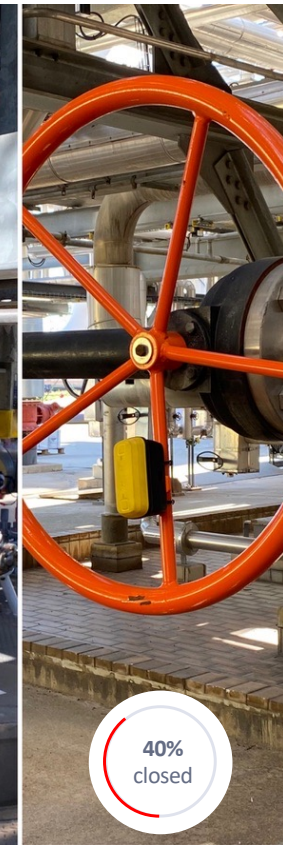


ONE FITS ALL

The Aloxy.Valve sensor is installed in minutes without customized brackets.
On any type or size of valve



Ball valve



Gearbox



Gate valve



CALIBRATION

Using buttons or by smartphone



- ☐ Suitable for **Atex phones** (Android app)
- ☐ Firmware **updates** over NFC.
- ☐ **Calibration** of device over NFC.
- ☐ Identification of **device ID**
- ☐ **Lock** devices.



ALOXY ENABLES NUMEROUS USE-CASES

Process Safety I



Raise alert when process valves are **not operated in correct sequence**

- Ensure **process continuity and safety**
- **Prevent incidents** caused by misaligned valves, e.g., tank blanketing, pump startup, process optimization, etc.

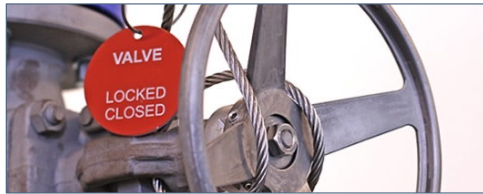
Process Safety II



Monitor that valves are in the correct position **when the process is started up.**

- Ensure **correct startup and shut down** of processes
- **Prevent incidents** caused by misaligned valves, e.g., batch process, steam system, decoking, etc.

Isolations



Ensure that block valves and blinds are **safely isolated and released** during maintenance

- **Reduce incidents and accidents** by correctly isolating valves and blinds before maintenance
- **Ensure a smooth and safe startup** of the system after maintenance
- **Prevent spills** (e.g., ammonia) in case drain valves are not closed

Line-ups



Ensure that valves are **correctly lined-up** in tank farms to prevent cross-contamination or spills

- **Prevent cross-contamination** of products in case of wrong valve sequences
- **Reduces chemical waste**
- **Eliminates supply chain downtime**

ALOXY ENABLES NUMEROUS MANUAL VALVE USE-CASES

Wellheads



Continuous **monitoring of choke valves** during and after operational activities

- Get real-time position data (% open) to reduce down-time and **optimize production yield**
- **Reduce labor costs** and truck **emissions** for manual inspection*

* "100.000+ miles per week in a single US state" – Energy company

Alert



Ensure that **valves maintain in the safe position for longer periods**

- **Reduce incidents, accidents, damage and process down-time** by monitoring critical valves that need to remain in one position for longer periods e.g., Block valve on PSV, Ammonia drain valves, flare line valve, etc.

Water supply



Ensure that **water supply is guaranteed** across the plant

- Raise real-time alert when **emergency shower** is activated
- Produce automated **incident & inspection reports**
- Ensure all **hydrants** are aligned properly and operational when a calamity occurs

Valve operation analytics



Additional analytics on big data to **increase efficiency** of existing operations or maintenance

- Track **valve usage** (number of manipulations, time to fully open)
- Detect **wear and tear** of valves (overtight due to old packing / seal, broken spindle, etc.)
- Use **machine learning** to detect abnormal manipulation flows

ALOXY'S CURRENT IOT APPLICATIONS

MANUAL VALVE MONITORING



Monitor the open – closed position of manually operated valves

EMERGENCY SHOWER MONITORING



Monitor the activation of emergency showers and eye washes

LINE BLINDS MONITORING

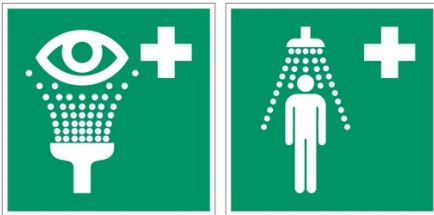


Monitor the status of isolations during inspections and maintenance activities

EMERGENCY SHOWER MONITORING

Industry challenge

- Emergency showers and eye washes are **safety critical** and **widespread over a plant**
- In many cases these are **mechanical constructions** without any electronic components or feedback
- When activated, emergency respond teams must **react quickly**
- According to ANSI regulation the showers need to be **activated weekly** (to validate their correct operation and prevent legionella pneumophila)



Aloxy IIoT solution



- Real-time alert when shower is activated
- Automated incident reporting
- Automated inspection reporting

ALOXY'S CURRENT IOT APPLICATIONS

MANUAL VALVE MONITORING



Monitor the open – closed position of manually operated valves

EMERGENCY SHOWER MONITORING



Monitor the activation of emergency showers and eye washes

LINE BLINDS MONITORING

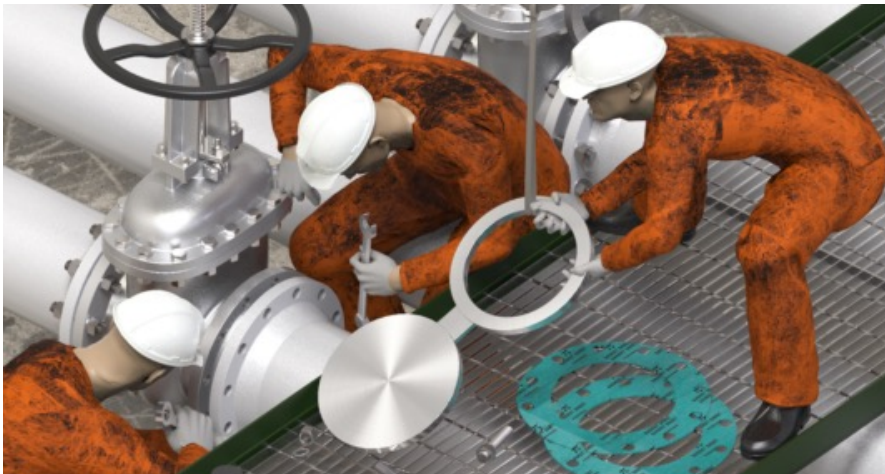


Monitor the status of isolations during inspections and maintenance activities

LINE BLINDS MONITORING

Industry challenge

- During maintenance and shutdowns, pipelines are being isolated by means of **line blinds between the flanges**
- This is a **manual activity** with **high safety and operational risks** in case an installed line blind is forgotten or removed too early



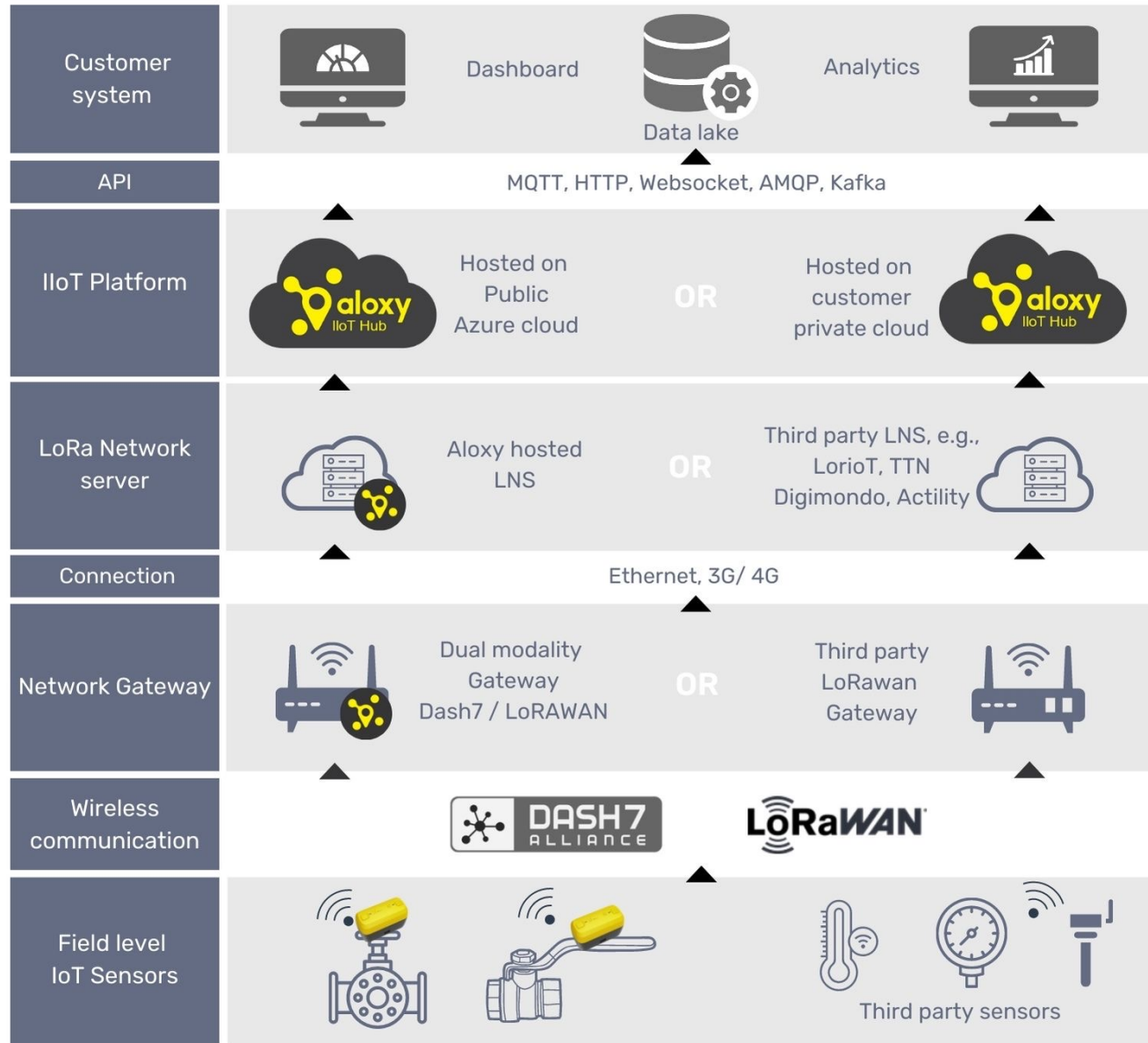
Aloxy IIoT solution





ARCHITECTURE AND IIOT HUB





IIOT ARCHITECTURE

Aloxy delivers an end-to-end solution

Or

integrates with existing LoRaWAN infrastructure



ALOXY IIOT HUB DASHBOARD

Device Management

- ☐ Valve position in real time.
- ☐ Battery level.
- ☐ Network quality.
- ☐ Configure devices.
- ☐ Categorising of devices.
- ☐ History of events

The screenshot displays the ALOXY IIOT HUB Dashboard. The left sidebar contains navigation options: APPS (MVPI Dashboard, Measurements, Visualization), IIOT HUB (Devices, Gateways, Networks, History, Connections, Monitor), and IAM (Manual). The main content area is titled 'MVPI' and features three summary cards: 'Calibration issues' (1, 1 minuut geleden), 'Network issues' (5, 1 minuut geleden), and 'Operational' (3, 1 minuut geleden). Below these is a filter bar with the text 'text:Demo FG'. A table lists device data with columns for Device ID, Name, Labels, Type, Open percentage, and Last position confirmation. The table contains three rows of data. At the bottom, there is a footer with the text '1.8.2 - 12 januari 2023 om 15:34 CET'.

Device ID	Name	Labels	Type	Open percentage	Last position confirmation
4634383400200	Demo device 2	Demo FG	Vertical Quarter Turn	43%	8 minuten geleden
4634383400320	Demo device 3	Demo FG	Multi Turn	100%	7 minuten geleden
4634383400490	Demo device 1	Demo FG	Multi Turn	36%	1 uur geleden

Items per page: 25 1 - 3 of 3

1.8.2 - 12 januari 2023 om 15:34 CET

Device management

Categories

Type of valve

Valve position

Time Last movement

NEW DEVELOPMENTS.

Aloxy.connect

Product Launch in **Q4 – 2023**

Atex box to connect any type of instrument which generates a 4...20mA signal. Pressure, temperature, level, ... Transmit this signal over existing LoRaWan Network.

- Converts 4-20MA and PT100
- ATEX/Class1Div2 Approved
- All SI units supported in IoT Hub



ALOXY.CONNECT





**ENABLING THE INDUSTRIAL INTERNET
OF THINGS**