

KARIMOKU
CASE STUDY

FABRIC

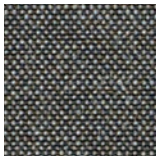
by Kvadrat

ATLAS

90% WO, 10% NY



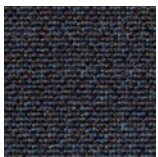
111 (B912)



161 (B913)



181 (B921)



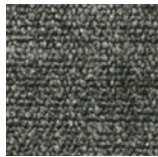
881 (B915)

MAPLE

81% VI, 15% LI, 4% PE



102 (B917)



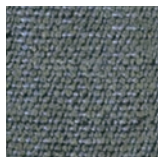
192 (B918)



222 (B909)



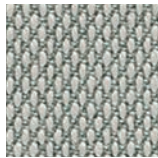
352 (B919)



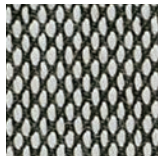
792 (B920)

STEELCUT TRIO 3

90% WO, 10% NY



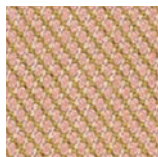
113 (B784)



124 (B785)



205 (B786)



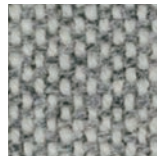
506 (B762)

HALLINGDAL 65

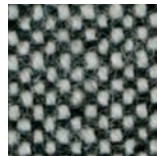
70% WO, 30% VI



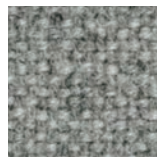
110 (B922)



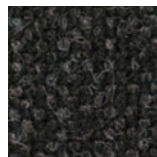
116 (B923)



126 (B924)



130 (B925)



180 (B926)

VIDAR 3

94% WO, 6% NY



222 (B779)



353 (B927)



472 (B928)

CODA 2

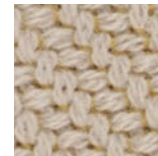
90% WO, 10% NY



103 (B929)



242 (B930)



422 (B931)

Printed color may vary slightly from actual color

KARIMOKU
CASE STUDY

TIMBER

OAK
PURE OAK
(Code : E)



OAK
SMOKED OAK
(Code : G)



PAPER CORD

NATURAL
(B932)



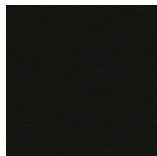
BLACK
(B933)



LEATHER

SHADE

by Sorensen Leather



PITCH BLACK
20296
(X808)



SLADE
20299
(X809)

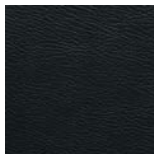


KHAKI
20289
(X810)



LIGHT
CONCRETE
20294
(X811)

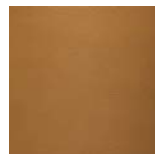
LEABELLE



BITTER
BROWN
(X353)



CHOCOLAT
BROWN
(X340)



AU LAIT
(X344)



GREIGE
(X448)



WHITE
(X343)

KARIMOKU
CASE STUDY

DESIGNERS SELECTION

N-DC01, N-DC02		N-S01	N-LC01	A-S01
LEATHER	FABRIC	FABRIC	FABRIC	FABRIC
Pure Oak / Shade : Light concrete - 20294	Pure Oak / Coda 2 103	Pure Oak / Coda 2 242	Pure Oak / Coda 2 422	Pure Oak / Steelcut Trio 3 113
Smoked Oak / Shade : Pitch black - 20296	Pure Oak / Hallingdal 65 110	Smoked Oak / Hallingdal 65 130	Pure Oak / Hallingdal 65 110	Pure Oak / Hallingdal 65 116
	Smoked Oak / Maple 222	Smoked Oak / Maple 222	Smoked Oak / Hallingdal 65 130	Smoked Oak / Maple 222