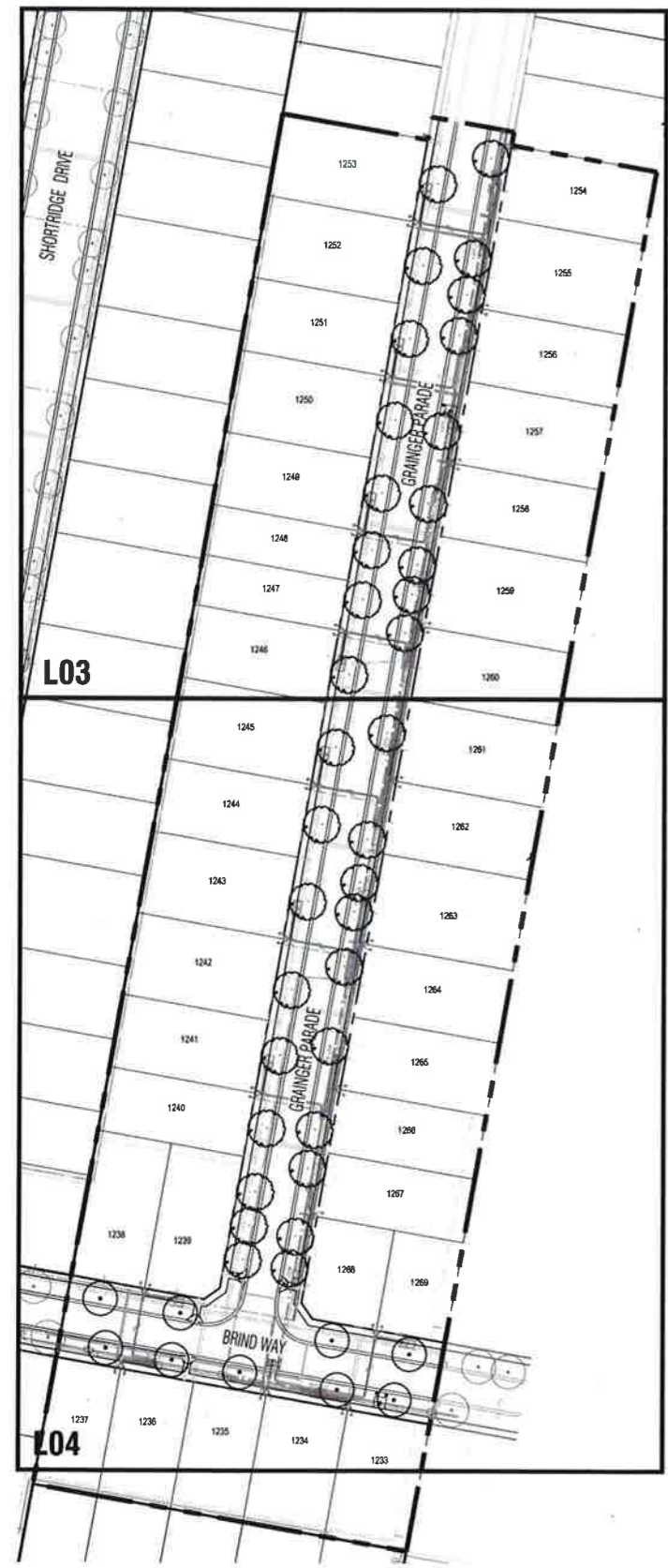


TP1	Town Planning Issue	AD	11.06.19
P3	Final revisions re: NBN and Power plans	AD	06.06.19
P2	Revisions re: Power and NBN plans	AD	14.05.19
P1	Preliminary Issue	AD	23.04.19
Revision	Description	Issue	Date

**APPROVAL ISSUE**

Planning Permit PLP/2018/525

- Notes**
- All dimensions to be checked on site before commencing work. All measurements are in metres, unless otherwise shown.
  - The locations of underground services and light poles are indicative only - refer to engineering drawings for design service offsets.
  - The location and depth of services shall be verified on site prior to the commencement of works. The Contractor shall be liable for any damage to services during the landscape works.
  - Standard Street Tree Offsets:
    - Standard offset from the back of kerb is 1.2m unless otherwise shown.
    - It is assumed that all Underground Cable in close proximity to the 'tree zone' \* (5m diameter x 600mm depth) shall be within conduits or have cover slabs to provide a higher level of infrastructure protection. (\*Refer 12.0 'Distribution Construction Standard Underground Trenching GA211' by Citypower and Powercor).
    - Minimum setback of 2.5m to underground electricity cable joints / leas.
    - Minimum setback of 2.0m to service assets including pits and conduit crossings.
    - Minimum setback of 0.75m to domestic service tapping points and 2.0m to stormwater outlets.
    - Minimum setback of 1.2m to footpath crossings and 3.0m to driveways where they are existing or known.
    - Minimum setback of 3.0m to fire hydrants.
    - Minimum setback of 4.0m to light poles.
  - Proposed Street Trees:
    - Tree position in front of lots may change slightly due to 'actual' location of services, and constructed driveway crossings.
    - Setback from intersection (kerb) shall be a minimum of 10m in accordance with City of Ballarat Landscape Design Manual (LDM).
    - Following City of Ballarat approval of these landscape plans any variation to the number or species of street trees requires approval by City of Ballarat.
  - Planting. All trees, shrubs and groundcovers shall be planted in accordance with LDM, unless otherwise specified.
  - Mulch. Mulch shall be recycled hardwood (or similar approved) in general accordance with LDM, unless otherwise specified.
  - Grass Seeding. Reseed nature strips and other grassed areas where there has been disturbance due to landscape works with a proprietary grass seed mix in accordance with the LDM.



**SHEET LAYOUT PLAN - Stage G2 , Lucas**

### Master Plant Schedule - Stage G2, Lucas

Code	Botanical Name	Common Name	Plant Size	Qty
<b>Trees</b>				
BJR	<i>Brachychiton 'Jerilderee Red'</i>	Jerilderee Red Brachychiton	16 ltr cont.	9
EMA	<i>Eucalyptus mannifera</i>	Red Spotted Gum	16 ltr cont.	36

**Planning and Environment Act 1987  
BALLARAT PLANNING SCHEME**

This plan is endorsed in accordance with condition 5 of Stage G2

Planning Permit No. PLP/2018/525

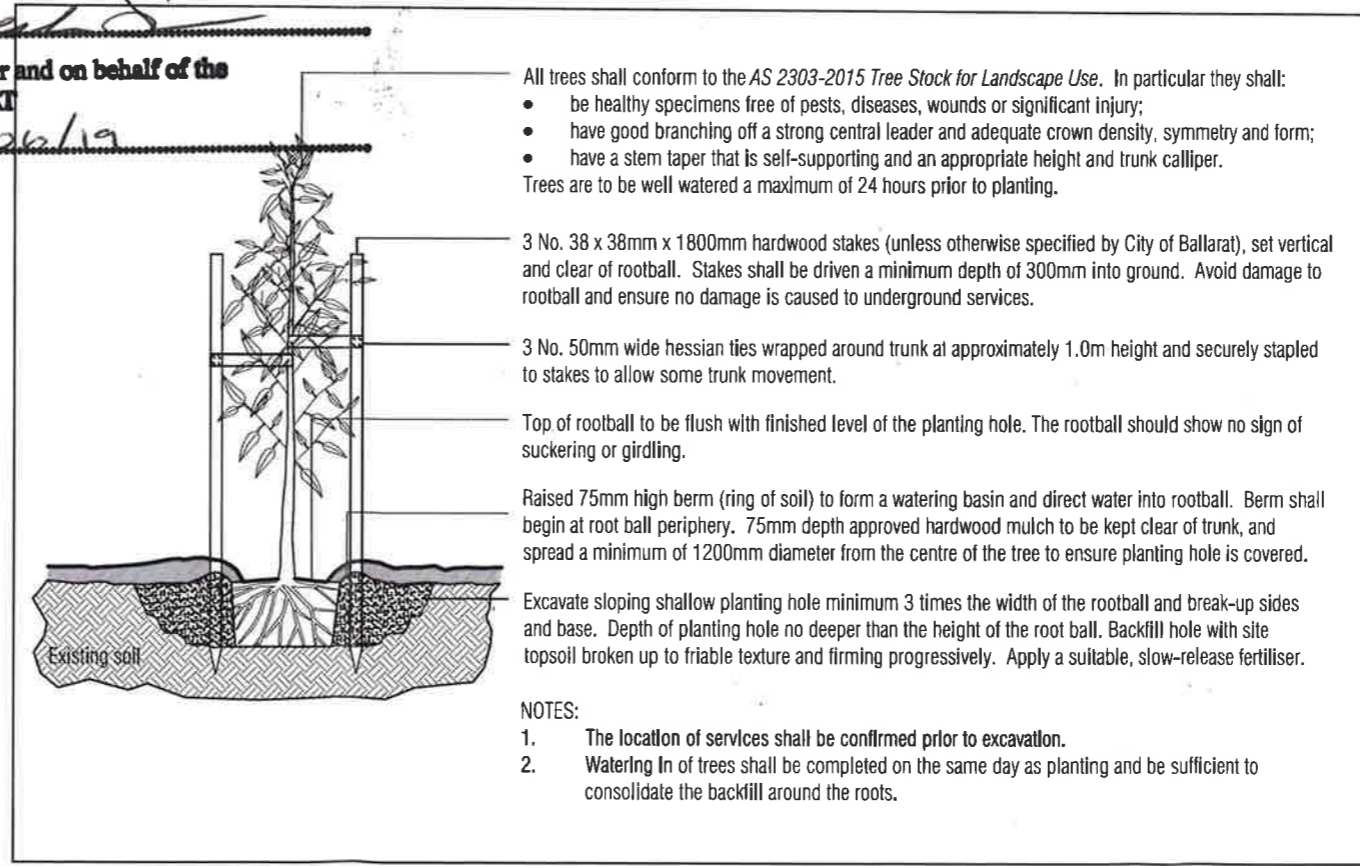
Planning Permit Issue Date 13/11/18

Plan 1 of 3

Signed [Signature]

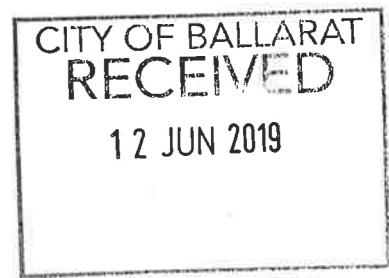
Authorised Officer for and on behalf of the  
**CITY OF BALLARAT**

Date 14/06/19



**TYPICAL TREE PLANTING DETAIL**

- All trees shall conform to the AS 2303-2015 Tree Stock for Landscape Use. In particular they shall:
- be healthy specimens free of pests, diseases, wounds or significant injury;
  - have good branching off a strong central leader and adequate crown density, symmetry and form;
  - have a stem taper that is self-supporting and an appropriate height and trunk calliper.
- Trees are to be well watered a maximum of 24 hours prior to planting.
- 3 No. 38 x 38mm x 1800mm hardwood stakes (unless otherwise specified by City of Ballarat), set vertical and clear of rootball. Stakes shall be driven a minimum depth of 300mm into ground. Avoid damage to rootball and ensure no damage is caused to underground services.
- 3 No. 50mm wide hessian ties wrapped around trunk at approximately 1.0m height and securely stapled to stakes to allow some trunk movement.
- Top of rootball to be flush with finished level of the planting hole. The rootball should show no sign of suckering or girdling.
- Raised 75mm high berm (ring of soil) to form a watering basin and direct water into rootball. Berm shall begin at root ball periphery. 75mm depth approved hardwood mulch to be kept clear of trunk, and spread a minimum of 1200mm diameter from the centre of the tree to ensure planting hole is covered.
- Excavate sloping shallow planting hole minimum 3 times the width of the rootball and break-up sides and base. Depth of planting hole no deeper than the height of the root ball. Backfill hole with site topsoil broken up to friable texture and firming progressively. Apply a suitable, slow-release fertiliser.
- NOTES:**
- The location of services shall be confirmed prior to excavation.
  - Watering in of trees shall be completed on the same day as planting and be sufficient to consolidate the backfill around the roots.



Client/Project: **Integra**  
Stage G2  
Lucas, Ballarat

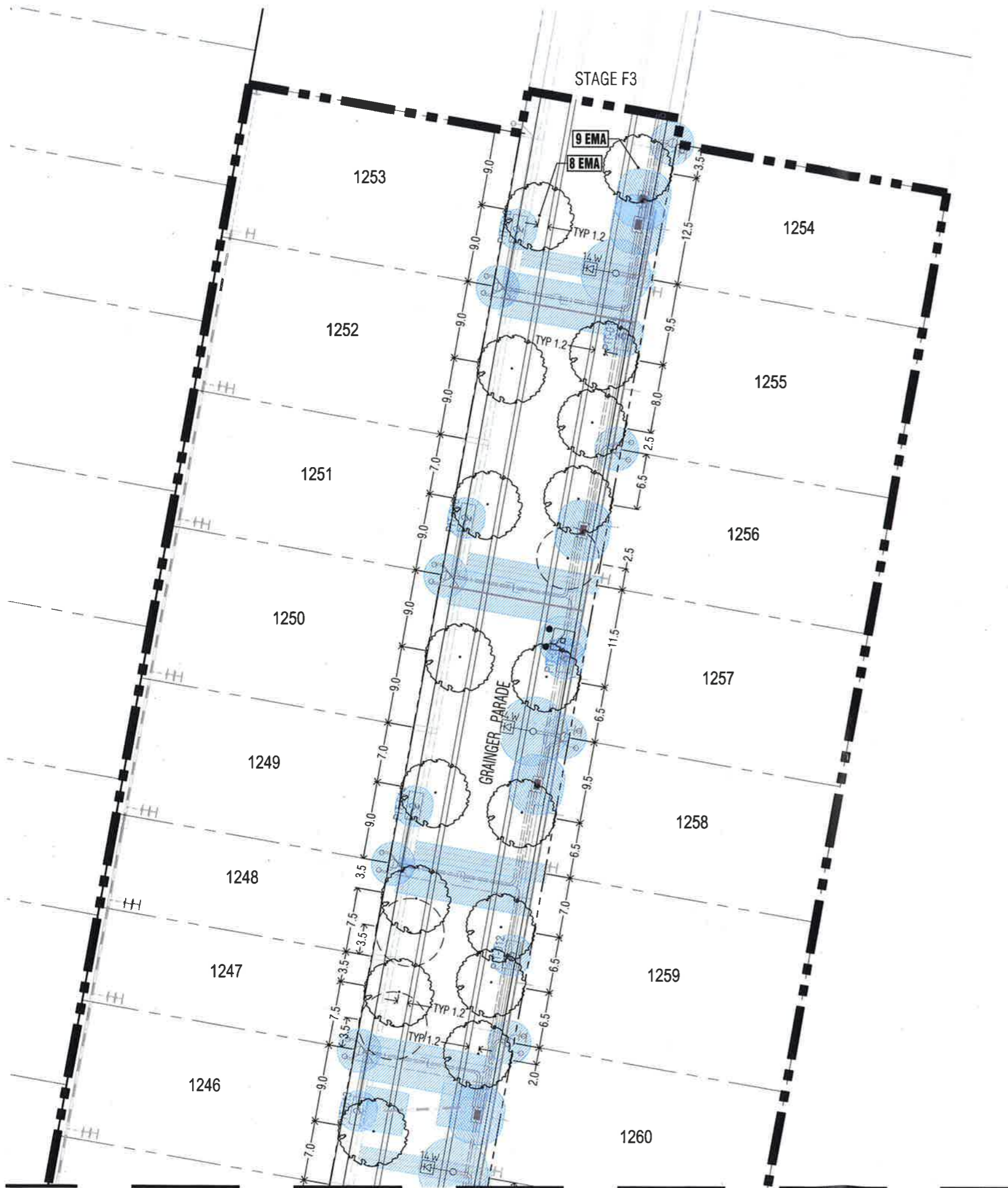
Drawing Title: **Sheet Layout and Plant Schedule**

Drawn	Approved	Date	North
AD	RH	11.06.2019	
Scale (A1)	Scale (A3)	Sheet	
NTS	NTS	2 of 4	

This drawing and design is protected by copyright © PLOT Landscape Architects Pty Ltd.

Drawing Number: **PLA291-L02**      Revision: **TP1**





Continued on L04

**Planning and Environment Act 1987**  
**BALLARAT PLANNING SCHEME**

This plan is endorsed in accordance with condition 5 of  
 Planning Permit No. PLP/2018/525  
 Planning Permit Issue Date 13/11/18  
 Plan 2 of 3  
 Signed [Signature]  
 Authorised Officer for and on behalf of the  
**CITY OF BALLARAT**  
 Date 14/06/19

TP1	Town Planning Issue	AD	11.06.19
P3	Final revisions re: NBN and Power plans	AD	06.06.19
P2	Revisions re: Power and NBN plans	AD	14.05.19
P1	Preliminary Issue	AD	23.04.19
Revision	Description	Date	Date

**APPROVAL ISSUE**

Plan No. PLP/2018/525  
 Planning Permit PLP/2018/525

- Notes**
- All dimensions to be checked on site before commencing work. All measurements are in metres, unless otherwise shown.
  - The locations of underground services and light poles are indicative only - refer to engineering drawings for design service offsets.
  - The location and depth of services shall be verified on site prior to the commencement of works. The Contractor shall be liable for any damage to services during the landscape works.
  - Standard Street Tree Offsets.
    - Standard offset from the back of kerb is 1.2m unless otherwise shown.
    - It is assumed that all Underground Cable in close proximity to the 'tree zone' (5m diameter x 600mm depth) shall be within conduits or have cover slabs to provide a higher level of infrastructure protection. (\*Refer 12.0 'Distribution Construction Standard Underground Trenching GA211' by Citypower and Powercor).
    - Minimum setback of 2.5m to underground electricity cable joints / leas.
    - Minimum setback of 2.0m to service assets including pits and conduit crossings.
    - Minimum setback of 0.75m to domestic service tapping points and 2.0m to stormwater outlets.
    - Minimum setback of 1.2m to footpath crossings and 3.0m to driveways where they are existing or known.
    - Minimum setback of 3.0m to fire hydrants.
    - Minimum setback of 4.0m to light poles.
  - Proposed Street Trees.
    - Tree position in front of lots may change slightly due to 'actual' location of services, and constructed driveway crossings.
    - Setback from intersection (kerb) shall be a minimum of 10m in accordance with City of Ballarat Landscape Design Manual (LDM).
    - Following City of Ballarat approval of these landscape plans any variation to the number or species of street trees requires approval by City of Ballarat.
  - Planting. All trees, shrubs and groundcovers shall be planted in accordance with LDM, unless otherwise specified.
  - Mulch. Mulch shall be recycled hardwood (or similar approved) in general accordance with LDM, unless otherwise specified.
  - Grass Seeding. Reseed nature strips and other grassed areas where there has been disturbance due to landscape works with a proprietary grass seed mix in accordance with the LDM.
  - Refer to drawing PLA291-L02 for Plant Schedule.

- Legend**
- Tree planted as part of another stage of works.
  - Proposed Street Trees - *Eucalyptus mannifera* (Red Spotted Gum) [EMA]
  - Alternative tree location if driveway is located where street tree is proposed.
  - Plant Label and Code
  - Service Offsets



**CITY OF BALLARAT RECEIVED**  
12 JUN 2019

Client / Project: **Integra**  
Stage G2  
Lucas, Ballarat

Drawing Title: **Street Tree Plan 01**

Drawn	Approved	Date	Rev
AD	RH	11.06.2019	

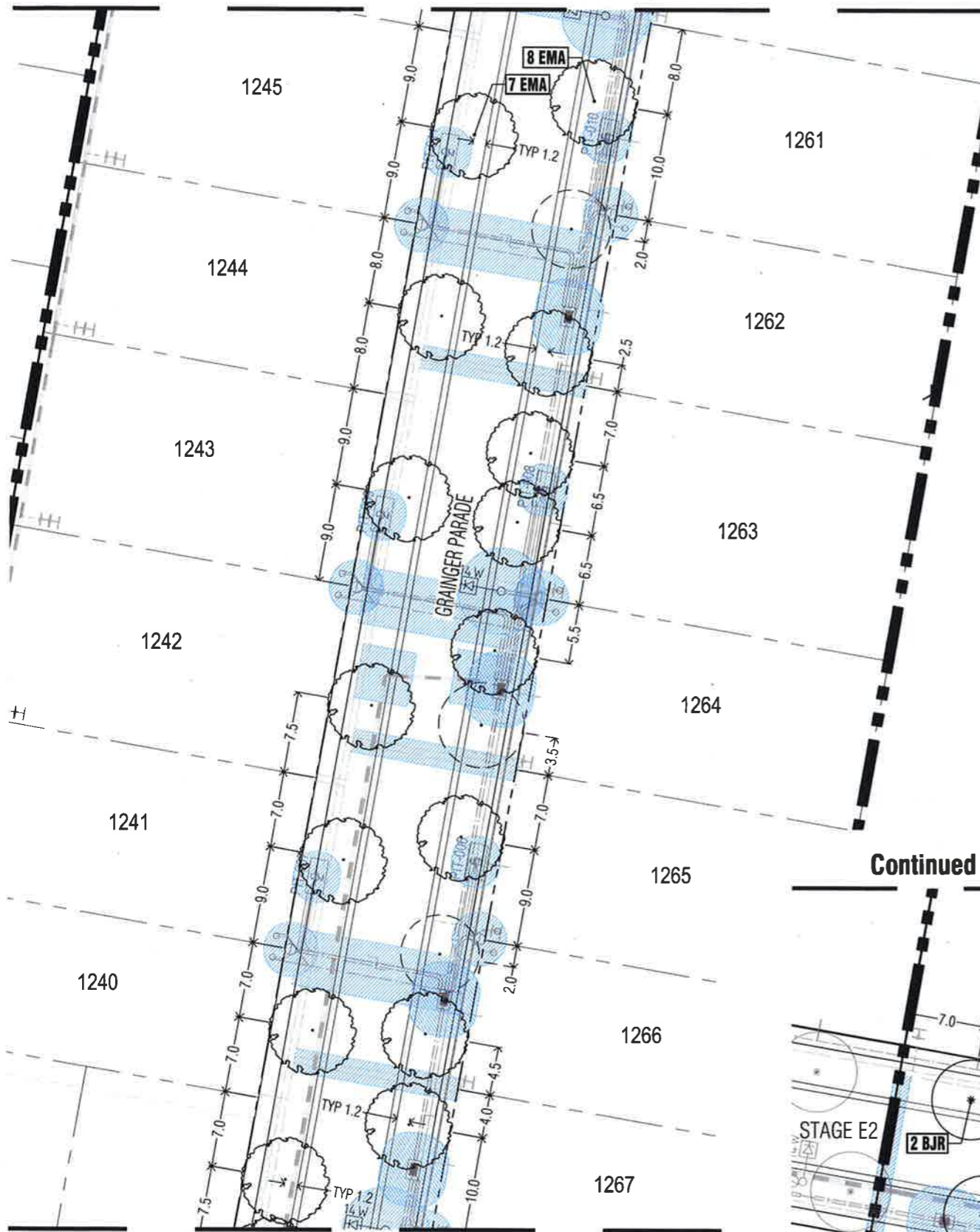
Scale (A1): 1:250 | Scale (A3): 1:500 | Sheet: 3 of 4

This drawing and design is protected by copyright © PLOT Landscape Architects Pty Ltd.

Drawing Number: **PLA291-L03** | Revision: **TP1**



Continued on L03



Continued right

**Planning and Environment Act 1987  
BALLARAT PLANNING SCHEME**

This plan is endorsed in accordance with condition 5 of Stage G2

Planning Permit No. PIP/2018/525

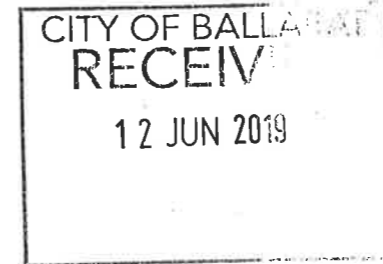
Planning Permit Issue Date 13/11/18

Plan 3 of 3

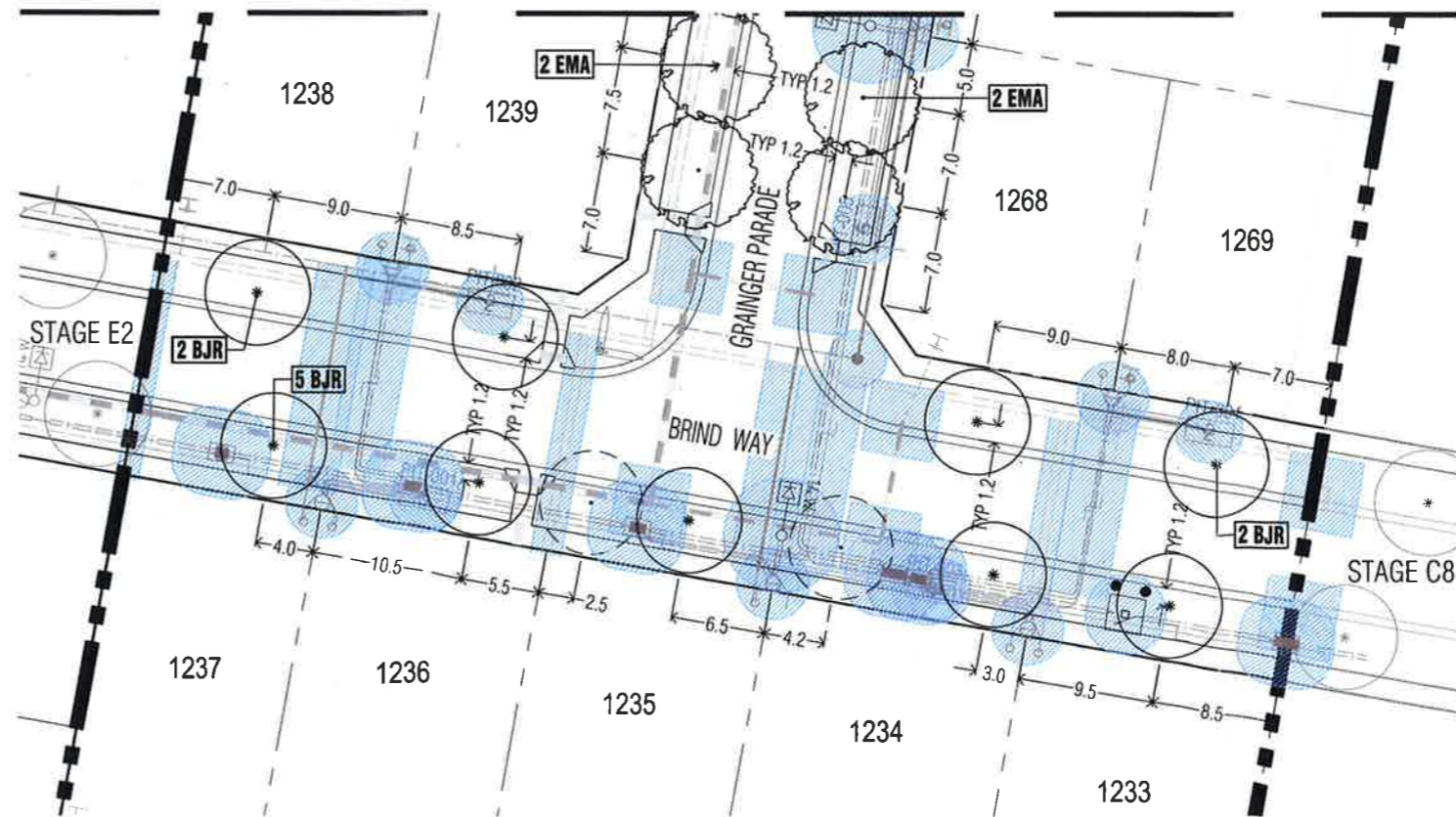
Signed [Signature]

Authorised Officer for and on behalf of the  
**CITY OF BALLARAT**

Date 14/06/19



Continued left



TP1	Town Planning Issue	AD	11.06.19
P3	Final revisions re: NBN and Power plans	AD	06.06.19
P2	Revisions re: Power and NBN plans	AD	14.05.19
P1	Preliminary Issue	AD	23.04.19
Revised	Description	Date	

**APPROVAL ISSUE**

Planning Permit PLP/2018/525

- Notes**
- All dimensions to be checked on site before commencing work. All measurements are in metres, unless otherwise shown.
  - The locations of underground services and light poles are indicative only - refer to engineering drawings for design service offsets.
  - The location and depth of services shall be verified on site prior to the commencement of works. The Contractor shall be liable for any damage to services during the landscape works.
  - Standard Street Tree Offsets:
    - Standard offset from the back of kerb is 1.2m unless otherwise shown.
    - It is assumed that all Underground Cable in close proximity to the 'tree zone' (5m diameter x 600mm depth) shall be within conduits or have cover slabs to provide a higher level of infrastructure protection. (Refer 12.0 Distribution Construction Standard Underground Trenching GA211 by Citypower and Powercor).
    - Minimum setback of 2.5m to underground electricity cable joints / tees.
    - Minimum setback of 2.0m to service assets including pits and conduit crossings.
    - Minimum setback of 0.75m to domestic service tapping points and 2.0m to stormwater outlets.
    - Minimum setback of 1.2m to footpath crossings and 3.0m to driveways where they are existing or known.
    - Minimum setback of 3.0m to fire hydrants.
    - Minimum setback of 4.0m to light poles.
  - Proposed Street Trees:
    - Tree position in front of lots may change slightly due to 'actual' location of services, and constructed driveway crossings.
    - Setback from intersection (kerb) shall be a minimum of 10m in accordance with City of Ballarat Landscape Design Manual (LDM).
    - Following City of Ballarat approval of these landscape plans any variation to the number or species of street trees requires approval by City of Ballarat.
  - Planting. All trees, shrubs and groundcovers shall be planted in accordance with LDM, unless otherwise specified.
  - Mulch. Mulch shall be recycled hardwood (or similar approved) in general accordance with LDM, unless otherwise specified.
  - Grass Seeding. Reseed nature strips and other grassed areas where there has been disturbance due to landscape works with a proprietary grass seed mix in accordance with the LDM.
  - Refer to drawing PLA291-L02 for Plant Schedule.

- Legend**
- Tree planted as part of another stage of works.
  - Proposed Street Trees - *Eucalyptus mannifera* (Red Spotted Gum) [EMA]
  - Proposed Street Trees - *Brachychiton 'Jerilderie Red'* (Jerilderie Red Brachychiton) [BJR]
  - Alternative tree location if driveway is located where street tree is proposed.
  - Plant Label and Code
  - Service Offsets



Client / Project  
**Integra**  
Stage G2  
Lucas, Ballarat

**Street Tree Plan 02**

Drawn	Approved	Date	North
AD	RH	11.06.2019	
Scale (A1)	Scale (A2)	Sheet	
1:250	1:500	4 of 4	

Project Number  
**PLA291-L04**  
Revision  
**TP1**