



# Human iPSC-derived Neural Progenitor Cells PCi-NPC

Product sheet

## DESCRIPTION

Associated product: PhenoCULT®-NPC culture medium.

Phenocell provides PCi-Neural progenitor cells (PCi-NPC) developed from human induced pluripotent stem cells (iPSC) at low passage. PCi-NPC are cryopreserved in the vapor phase of liquid nitrogen. A thawing test is performed on each batch. Viability after thawing is > 90%. A protocol for thawing and culture is provided in PCi-NPC\_User's Guide.

PCi-NPC are proliferative neural progenitors available in  $1 * 10^6$  cells/vial and  $2 * 10^6$  cells/vial. They provide a reliable source of progenitors for neural lineage developmental studies, pharmacological and toxicology studies and other areas of neuroscience research.

Shipping is on dry ice.

Product	Catalog No.	Quantity
Human iPSC-derived neural progenitor cells	PCi-NPC_1M	$1 * 10^6$ cell/vial
Human iPSC-derived neural progenitor cells	PCi-NPC_2M	$2 * 10^6$ cell/vial

NPC are suitable for downstream differentiation into mature neuronal cell types.

## STORAGE

Store at  $-135^{\circ}\text{C}$  or colder (vapor phase of liquid nitrogen or deep freezer) for 12 months from date of receipt. Use thawed samples immediately.

## PRODUCT USE

PCi-NPC are intended for IN VITRO RESEARCH USE ONLY and are not to be used for any other purpose, which includes but is not limited to, unauthorized commercial uses, in vitro diagnostic uses, ex vivo or in vivo therapeutic uses or any type of consumption or application to humans or animals.

## SAFETY PRECAUTIONS

These recommendations are based on prudent application of professional judgment. Wear the appropriate personal protection equipment (PPE) and handle the frozen vials with due caution. This product should be treated as potentially infectious and only used in biological safety level 2 premises and conditions. Do not ingest. In case of contact with eyes, rinse immediately with plenty of water for at least 15 min and seek medical advice. Environmental measures: soak up with inert absorbent material. Clean with bleach and rinse thoroughly.



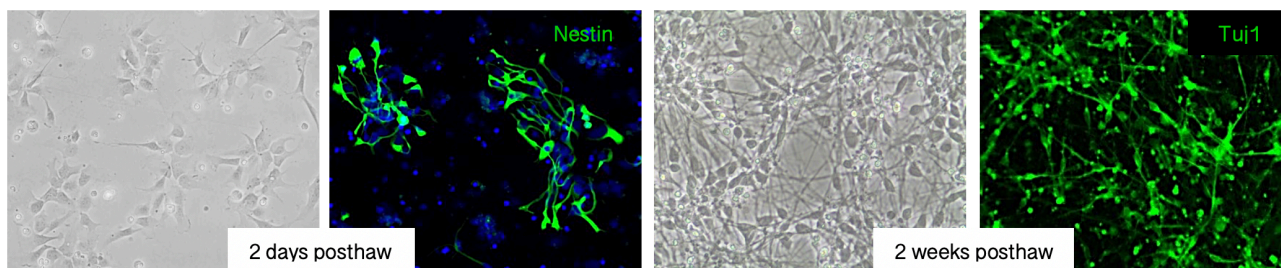
Prevent further leakage or spillage if safe to do so. Phenocell cannot be held liable for any damage or losses resulting from the handling or from contact with the product as described herein.

## QUALITY CONTROL

Full description of the QC is provided in the Certificate of Analysis for each lot.

PCi-NPC are derived from qualified human iPSC and have been validated for high expression level of cell surface markers indicative of NPC, including NCAM (CD56) and HNK1 (CD56). PCi-NPC display normal karyotype and tested negative for mycoplasma, HBV, HCV, HIV before freezing.

Phenocell cannot guarantee the biological function or any other properties associated with performance of the product in researchers' individual culture systems.



### FOR RESEARCH USE ONLY

Not intended for human or animal diagnostic, therapeutic or clinical applications.



## USERS NOTICE:

---

Phenocell's production of somatic cells differentiated from iPS cells is performed under license from iPS-Academia Japan (Kyoto, Japan) that implies restrictions for Customers (Users). Make sure that you have read and understood the User Notice below before purchasing our products.

## USER NOTICE:

---

- (a) User may use the Licensed Differentiated Cells for internal research, including but not limited to screening potential drug compounds for efficacy and safety, and for the provision of such services to Third Parties;
- (b) User shall not administer the Licensed Differentiated Cells in human or animal subjects for human or animal therapeutic, diagnostic or prophylactic purposes, including but not limited to clinical applications, cell therapy, transplantation, and/or regenerative medicines;
- (c) User may transfer the Licensed Differentiated Cells to Third Party in accordance with the User Restriction; and
- (d) no other right, express or implied, is conveyed by the sale of Licensed Differentiated Cells or the provision of generation services of Licensed Differentiated Cells.

