

# Smart Homes & Automation

Security, control and peace of mind with smart home technology



## DATASHEET

The **New Build Starter Package** is the easiest way to transform your new home or apartment into an easy-to-use smart home

Smartlife New Build Starter is a security, smart lighting and control system that makes it easy for everyone - partners, families, kids, and guests, to control lighting, scenes, doorbells, locks, cameras, intercom, and more, at home and remotely.

It transforms any house or apartment into an easy-to-use smart home. It's modular and expandable - there are lots of upgrade options that can be added now or pre-wired for future installation.

### Contents

- 📶 Smartlife App
- 📹 Doorbird video doorbell intercom
- 🔑 Yale smart digital door lock
- 💡 3 x smart glass 4-button light switches
- 📱 Smart alarm and touch screen keypad
- 📶 4 x motion sensors and 1 x smoke detector
- 🔔 Indoor and external siren
- 🚗 Garage door controller

### Pricing (including GST)

Ready to Install*	\$5,995
Installed**	\$8,495

### Summary

- 🔑 **Smartlife Remote Control App**  
Connect with an iPhone or Android. This **universal remote** controls all your security, door lock, garage door, intercom, and lights.
- 📱 **Smart Security**  
Smart system with 4 wired motion sensors. Receive alerts, monitor and control from your Smartphone.
- 📹 **Video Doorbell Intercom**  
Answer your door from anywhere you have an internet connection.
- 💡 **Smart Lighting**  
Switch all lights off when you leave, and create a **lived in** look when you are out. Three 4-button switches provide control of up to 12 lighting circuits.
- 🔧 **Expandable**  
Optional additional control for HVAC, TVs, music, and entertainment system.

### What next?

It's good to start planning early so talk to a Smartlife consultant today and book a free technology demo and optional building plans review.

Visit one of the Technology Experience Centres:

- North Shore
- Parnell
- East Tamaki
- Tauranga

"It was a pleasure to deal with a company who were interested in solving problems and making it happen rather than just selling products."



Brent Hyde, SRG Global

See over for more details...

**Technology overview**
**Upgrade options**

**Smartlife App**

Smartlife remote control App for your iPhone, iPad, iPod Touch or Android. This **universal remote** controls access to your property, intercom, lights, and optionally controls your air conditioning, music, TVs, and entertainment system.


**Doorbird doorbell and video intercom**

Smart home video intercom/doorbell which supports remote video monitoring and two way audio communication.


**Yale smart digital door lock**

Smart digital lock supports keyless entry. Remote control through the App or pin number.


**Smart alarm**

Smart alarm system with 3 PIR motion detectors, garage door sensor, 1 smoke detector, and internal and external sirens.

- 8/16 zones onboard
- onboard ethernet & dialler


**Smart lighting**

- 3 x 4-button smart switches
- 3-12 circuits of smart lighting control, allows for easy setting of scenes in living areas.

**Garage door control**

Smart garage door control system enables you to open the garage door remotely to let in a tradesperson or delivery person.


**Programmed ready for Alexa**

Programmed ready for Alexa voice control, (Alexa is not included in the kit.)

Now you have a Smartlife system you can add more features and control it all with the same Smartlife App.

- 📶 Additional motion sensors
- 📹 Video cameras
- ☁️ Temperature sensors
- 🚰 Flood sensors
- 💡 Motion sensing lights
- 🚒 Panic buttons
- 🔊 Audio/Visual control
- 📺 Media management across devices
- 🎬 Home theatre
- 🔊 Internal/External sound systems
- 👤 Aged care monitoring

*\*Ready to install* includes pre-programming and commissioning and excludes pre-wire and installation.

*\*\*Installed* includes pre-wire and standard installation in a typical home and is subject to site inspection and our terms and conditions

**Smartlife Technology Experience Centres**

Come and experience the benefits of living with integrated technology, understand the options and pricing and see what is right for you.


**Smartlife Auckland North**

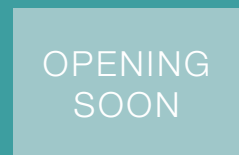
4/1 Holder Place  
 Rosedale, North Shore  
 Auckland


**Smartlife Auckland Central**

Home Ideas Centre  
 165 The Strand, Parnell  
 Auckland


**Smartlife Tauranga**

301 Cameron Road,  
 Tauranga 3110


**Smartlife Auckland East**

40 Springs Road  
 East Tamaki  
 Auckland 2013